

Seasonal views of a Chari affluent, Siniaka Minia wildlife reserve, Chad

Sentinel-1 CSAR IW acquired on 15 October 2018, 07 January 2019 and 24 June 2019
Sentinel-2 MSI acquired on 18 October 2018, 01 January 2019 and 20 June 2019

Author(s): Sentinel Vision team, VisioTerra, France - svp@visioterra.fr

Keyword(s): season, river, national park, biodiversity, savannah, Chad, Central Africa



[2D Layerstack](#)

Fig. 1 - S2 (2018.10.18) - 11,8,2 colour composite - The rainy season goes from July to Septembre. The river in deep blue is clearly visible. [2D view](#)

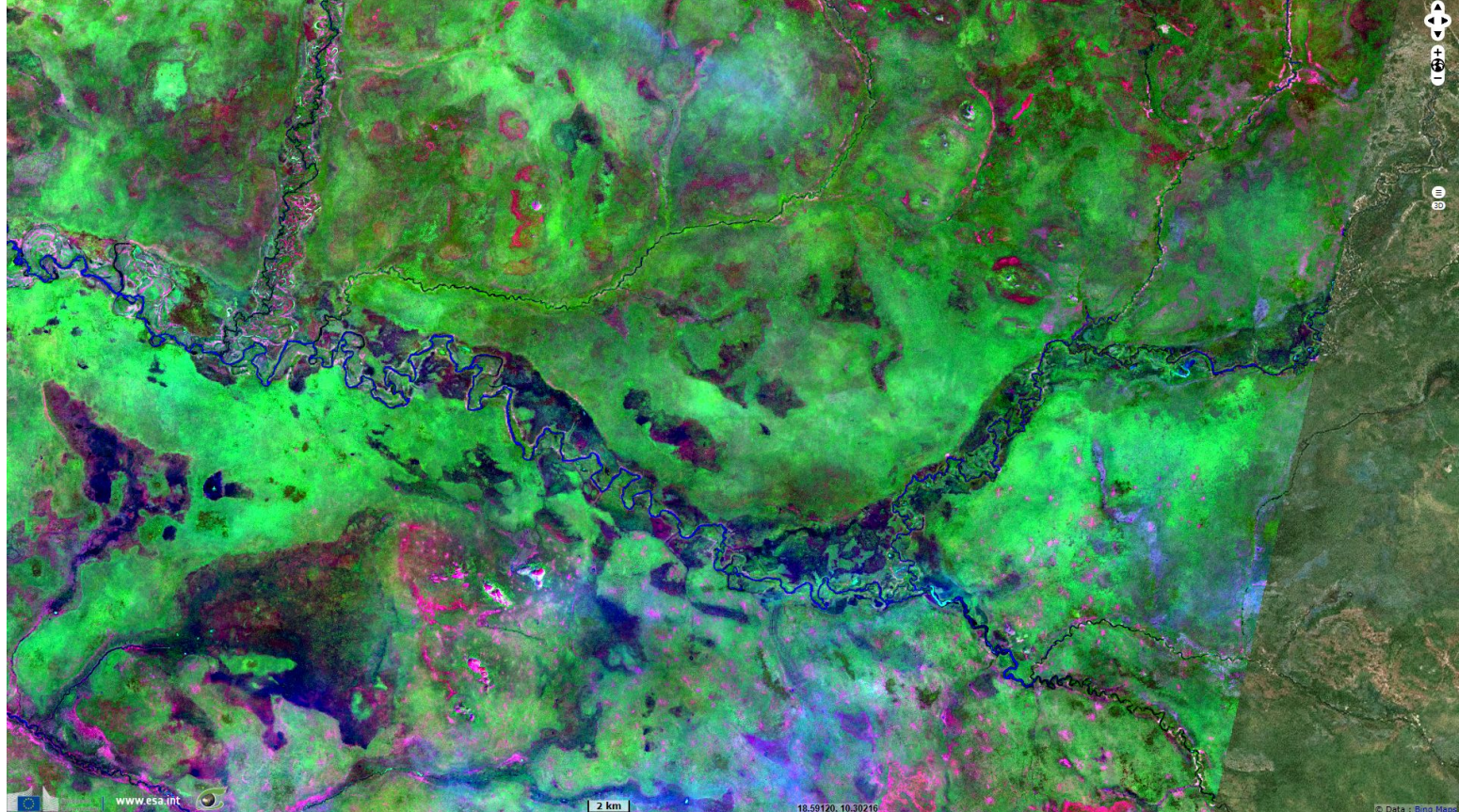


Fig. 2 - S2 (2019.01.01) - 11,8,2 colour composite - From november to may, the dry season might be responsible of some bushfires. [2D view](#)

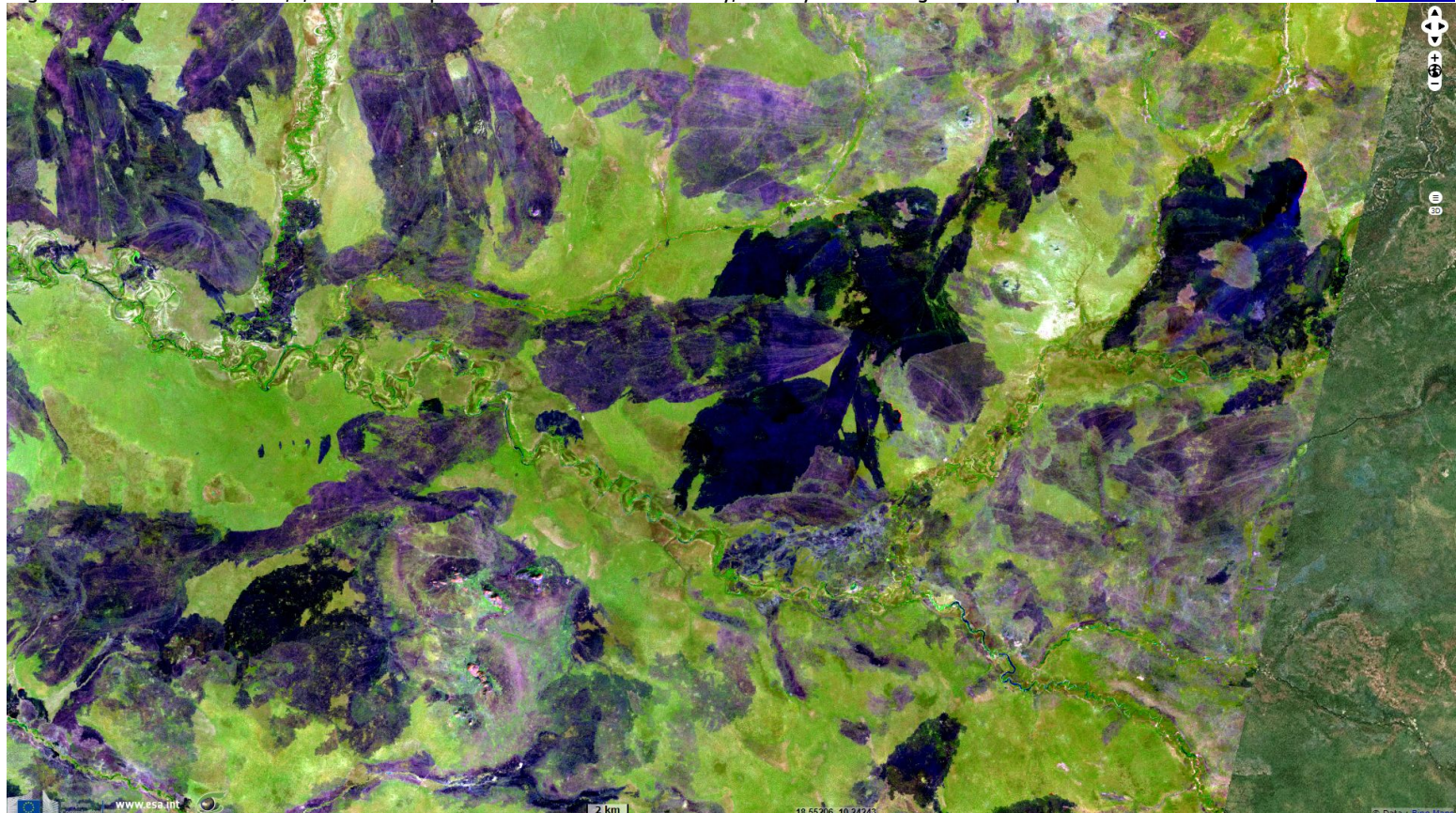


Fig. 3 - S2 (2019.06.20) - 11,8,2 colour composite - The beginning of the rainy season allows the slow vegetation recovery.

[2D view](#)

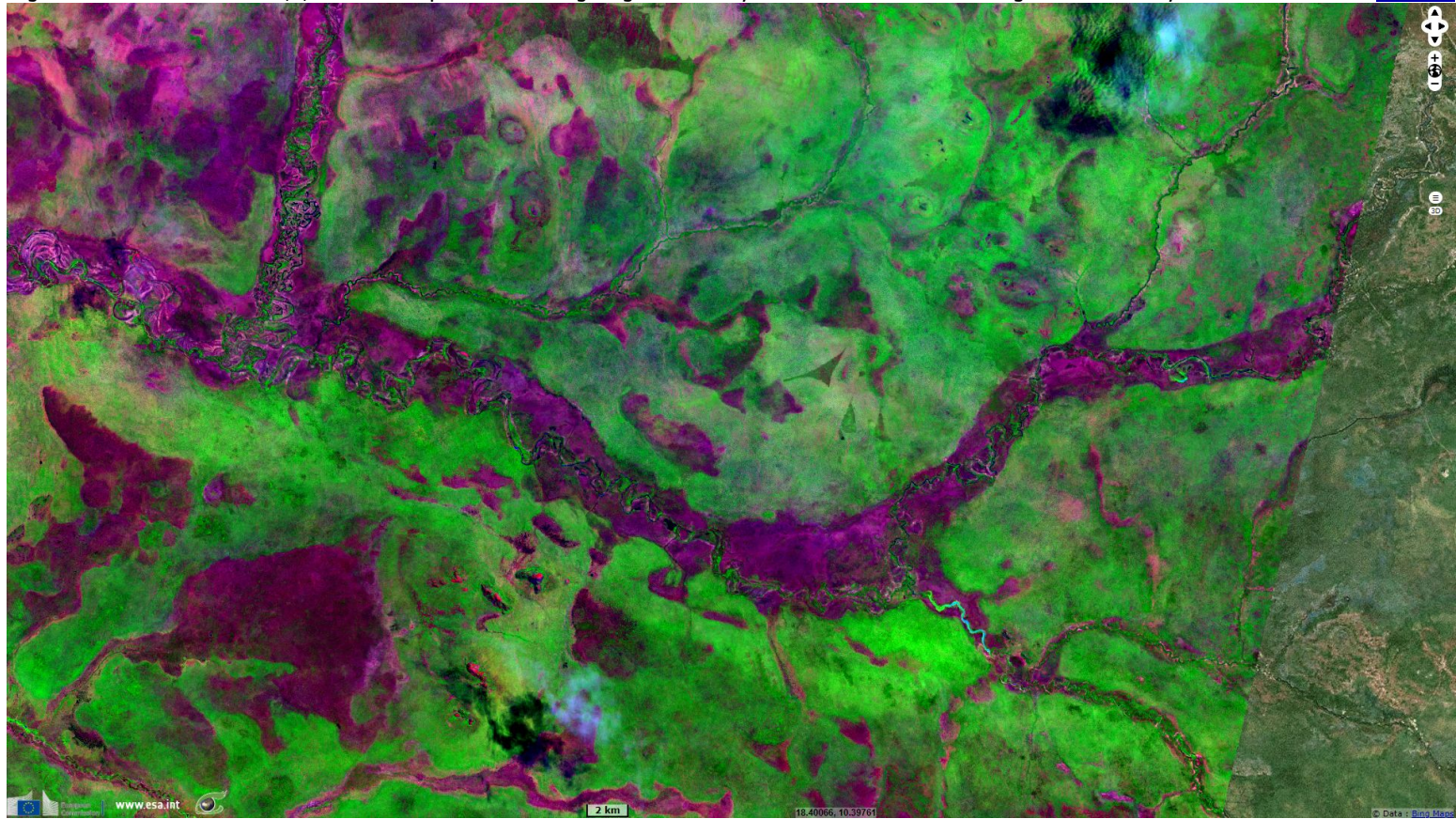
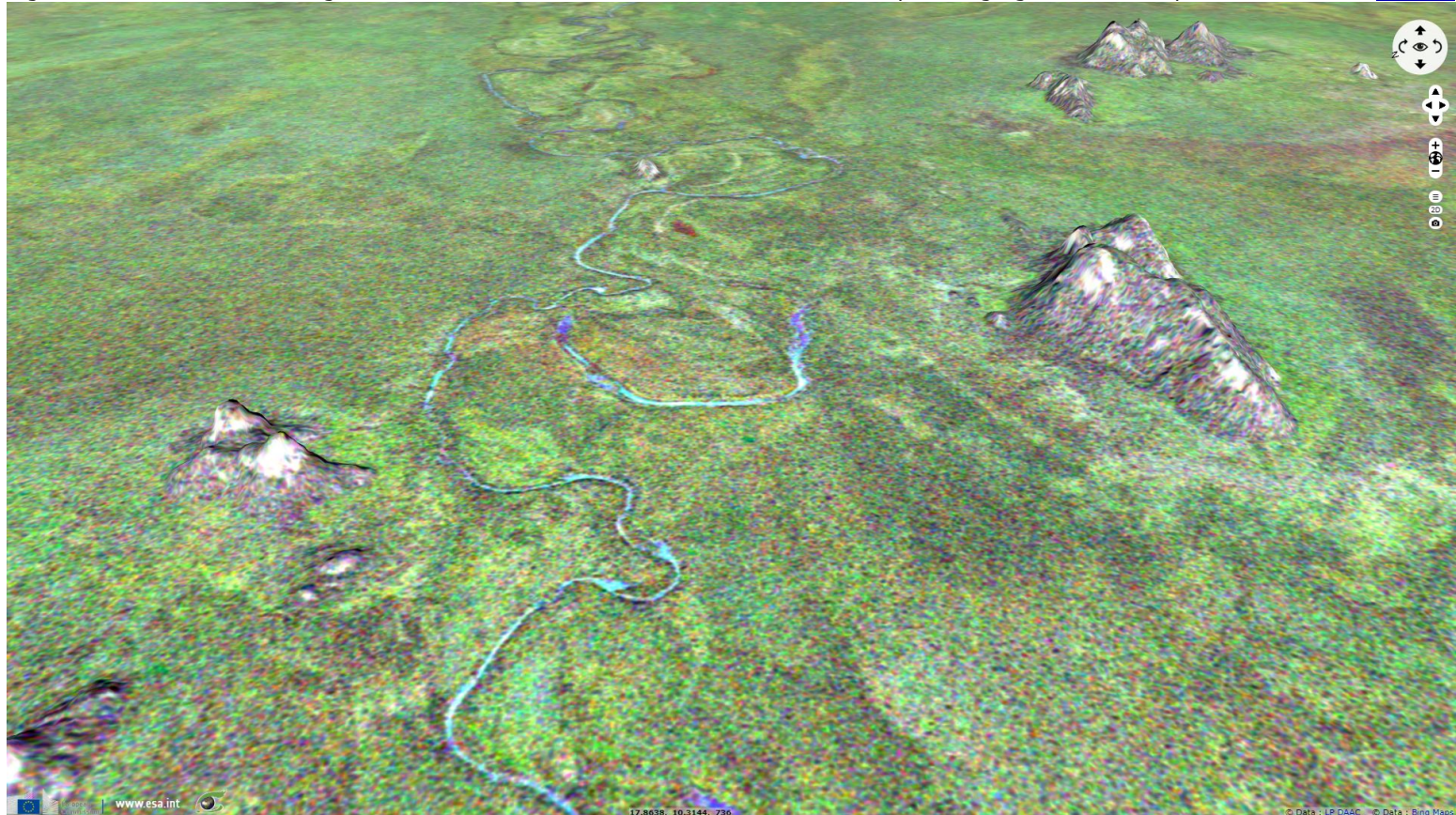


Fig. 4 - S1 - red:vv(07.01.2019), green:vv(24.06.2019), blue:vv(15.10.2018) - This colour composite highlights the river depth.

[3D view](#)



*The views expressed herein can in no way be taken to reflect the official opinion of the European Space Agency or the European Union.
Contains modified Copernicus Sentinel data 2019, processed by VisioTerra.*

More on European Commission space:						
More on ESA:				S-1 website	S-2 website	S-3 website
More on Copernicus program:				SciHub_portal	Cophub_portal	Inthub_portal
More on VisioTerra:				Sentinel Vision Portal	Envisat+ERS_portal	Swarm+GOCE_portal