

# Water release at Turano dam floods Rieti plains, Italy

Sentinel-2 MSI acquired on 11 January 2020 at 10:02:59 UTC  
Sentinel-1 CSAR IW acquired on 27 January 2020 at 17:05:45 UTC  
Sentinel-1 CSAR IW acquired on 27 January 2021 at 17:05:08 UTC  
Sentinel-2 MSI acquired on 30 January 2021 at 10:02:41 UTC

Author(s): Sentinel Vision team, VisioTerra, France - [svp@visioterra.fr](mailto:svp@visioterra.fr)

Keyword(s): Urban planning, agriculture, rain, snow, precipitations, dam, flood, Italy

[3D Layerstack](#)

Fig. 1 - S2 (11.01.2020) - Rieti Valley, in Lazio, lies in the central Apennines, it is fed by Velino river and surrounded by mountains.

[2D view](#)

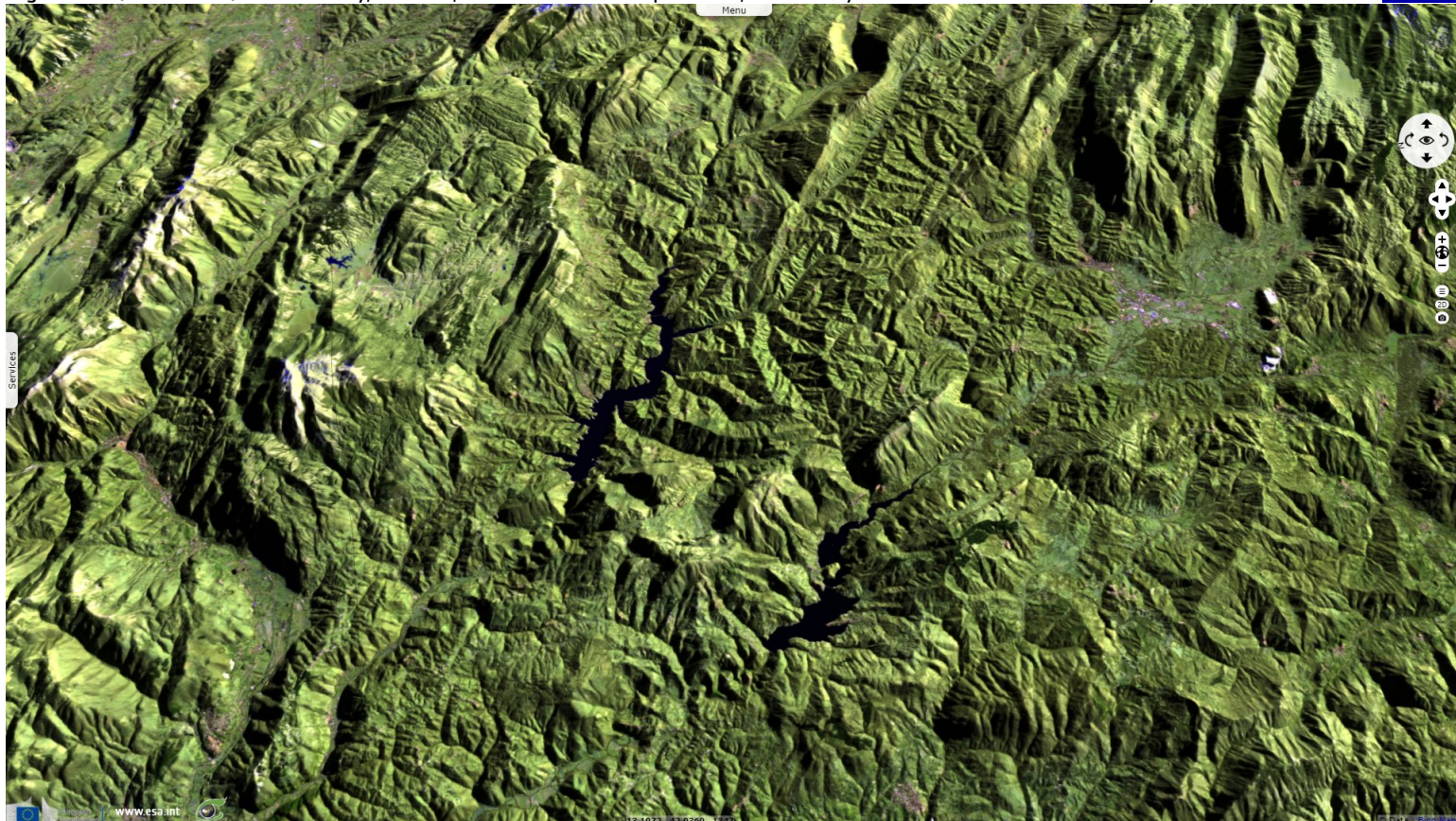
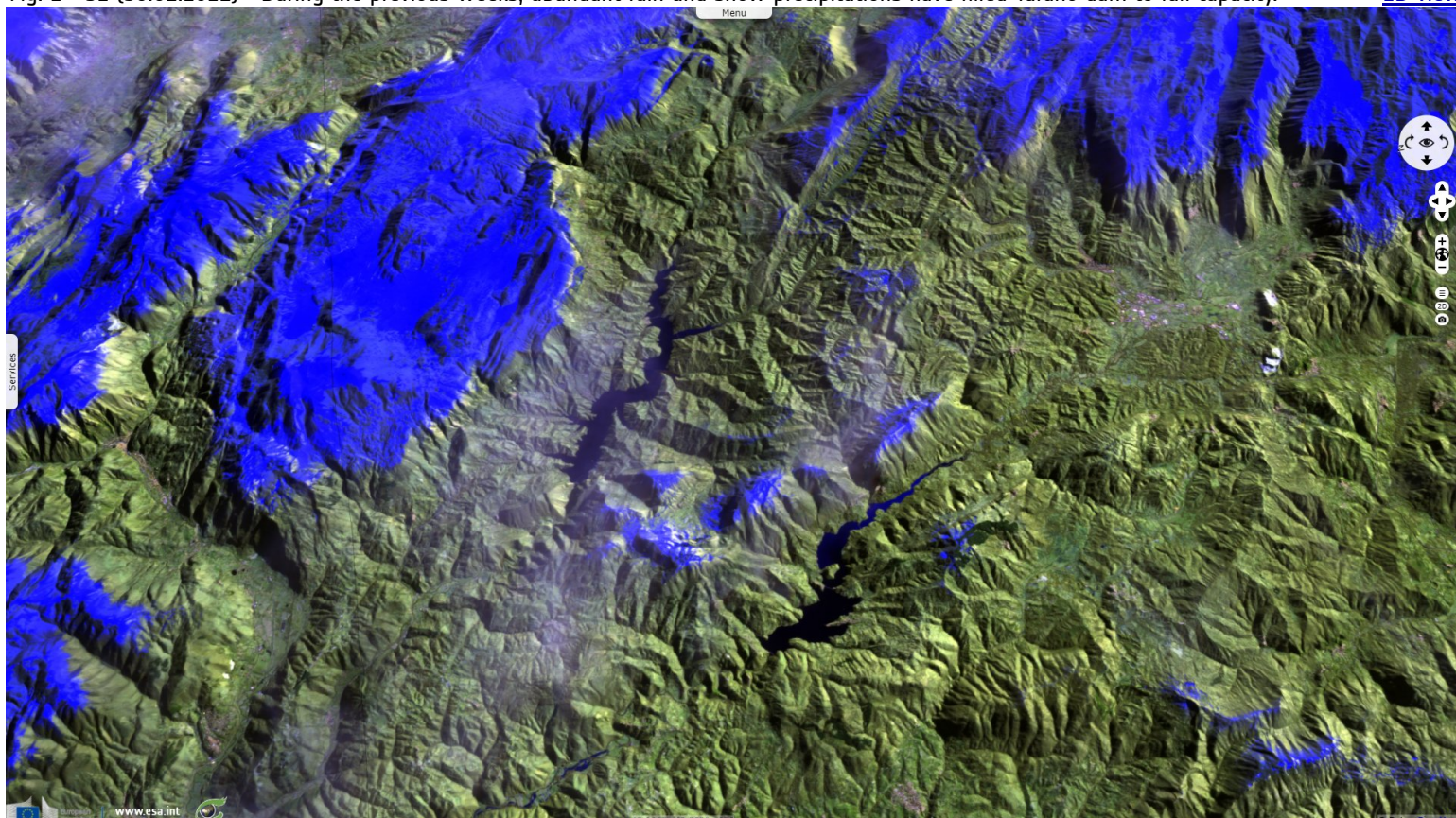


Fig. 2 - S2 (30.01.2021) - During the previous weeks, abundant rain and snow precipitations have filled Turano dam to full capacity.

[2D view](#)



Compared the water level of January 2020, both lakes are at a higher mark and surrounded by large amounts of snow.



Fig. 3 - S1 (27.01.2020) - Rieti Plain has been nicknamed "the granary of Rome", it was once filled by a lake.

[2D view](#)

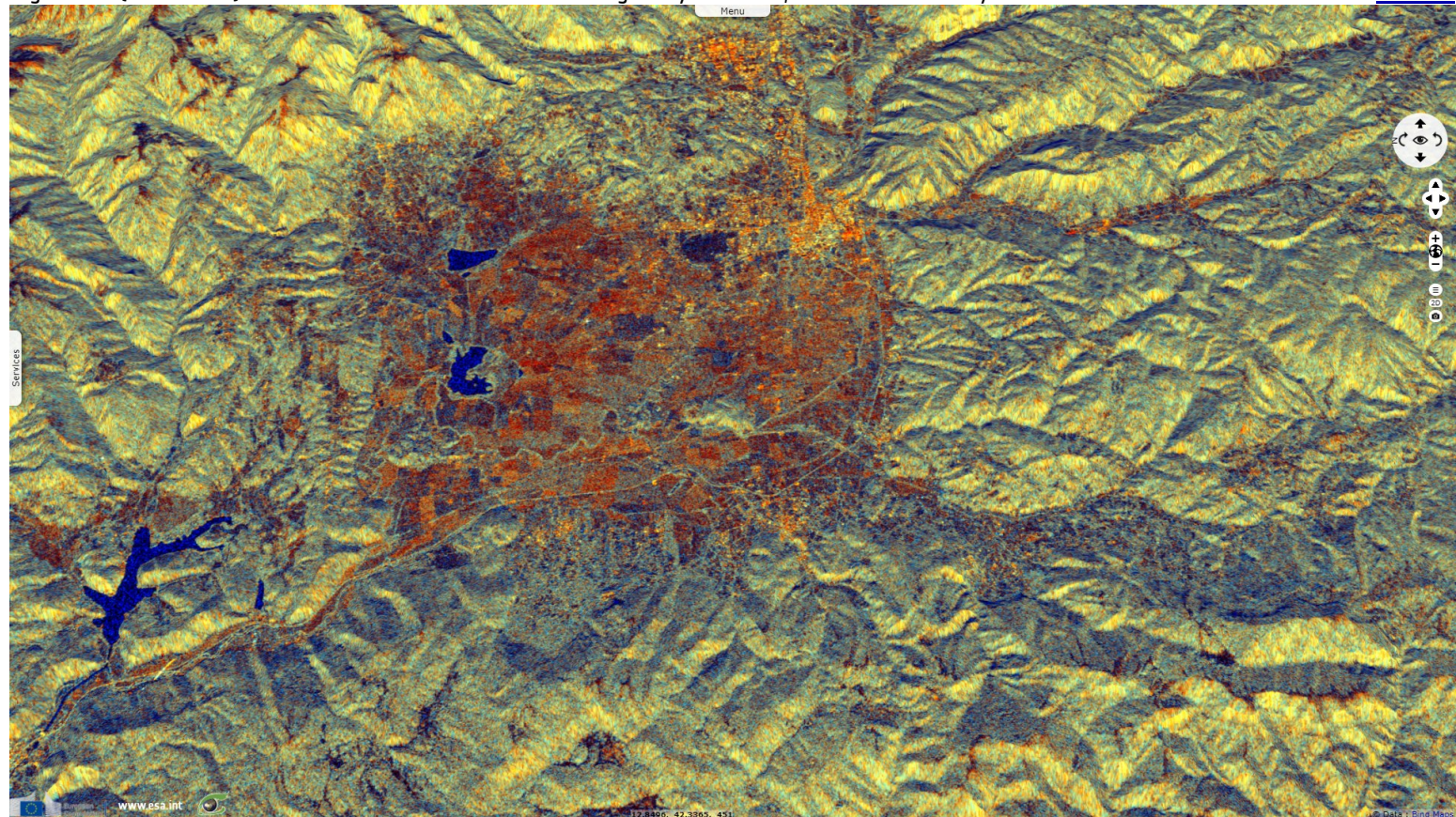
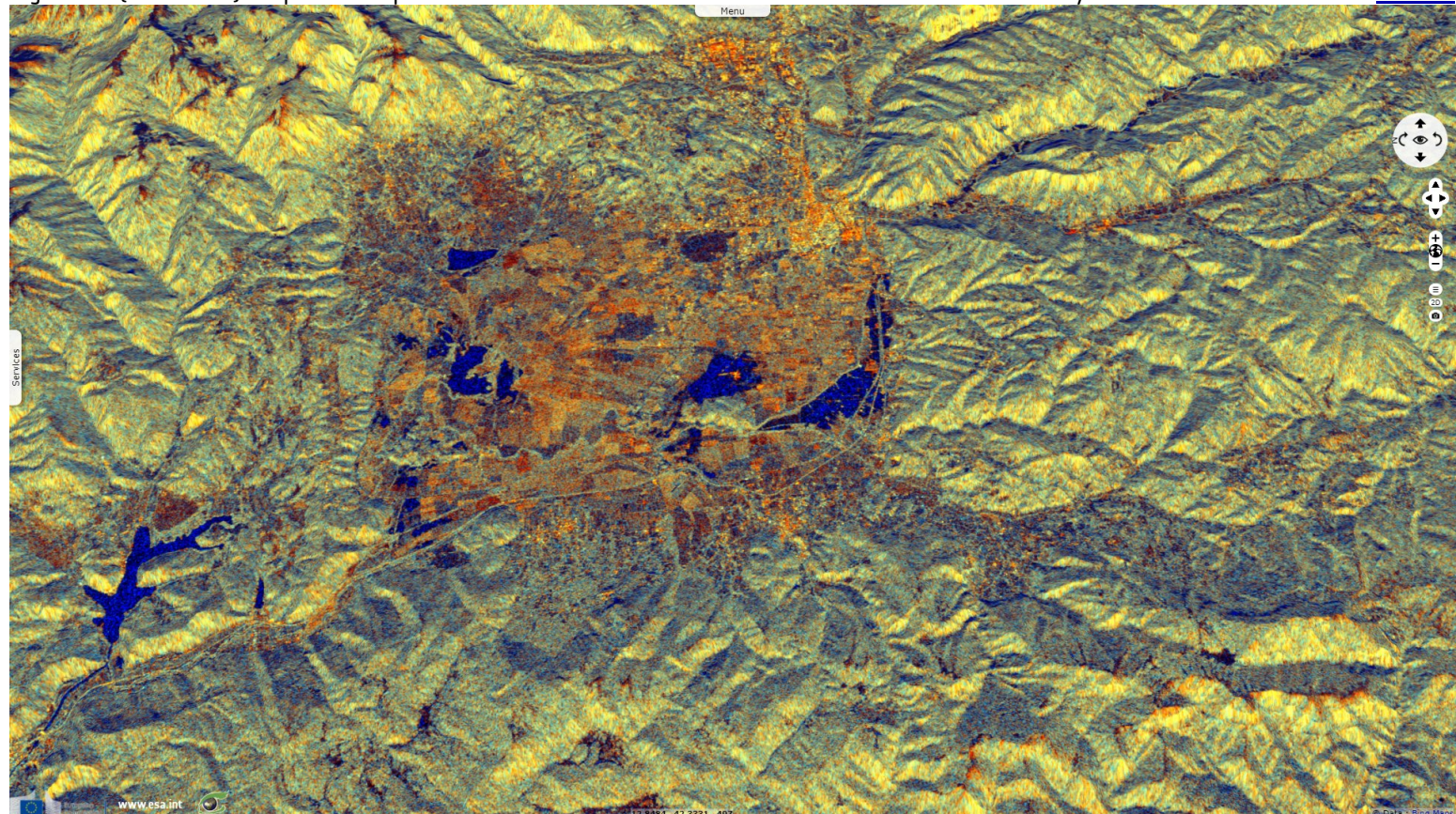
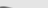








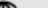




Fig. 4 - S1 (27.01.2021) - A part of the plain was flooded when water was released from Turano dam for safety reasons.

[2D view](#)



*The views expressed herein can in no way be taken to reflect the official opinion of the European Space Agency or the European Union.  
Contains modified Copernicus Sentinel data 2021, processed by VisioTerra.*

More on European Commission space:							
More on ESA:				<a href="#">S-1 website</a>	<a href="#">S-2 website</a>	<a href="#">S-3 website</a>	
More on Copernicus program:				<a href="#">Scihub portal</a>	<a href="#">Cophub portal</a>	<a href="#">Inthub portal</a>	<a href="#">Colhub portal</a>
More on VisioTerra:				<a href="#">Sentinel Vision Portal</a>	<a href="#">Envisat+ERS portal</a>	<a href="#">Swarm+GOCE portal</a>	<a href="#">CryoSat portal</a>