

# Maragua Depression, a time machine to the Cretaceous in Bolivia

Sentinel-1 CSAR IW acquired on **27 November 2021** at 22:50:36 UTC  
Sentinel-1 CSAR IW acquired on **09 December 2021** at 22:50:36 UTC  
Sentinel-1 CSAR IW acquired on **21 December 2021** at 22:50:35 UTC  
Sentinel-2 MSI acquired on **29 June 2022** at 14:27:31 UTC

Author(s): Sentinel Vision team, VisioTerra, France - [svp@visioterra.fr](mailto:svp@visioterra.fr)

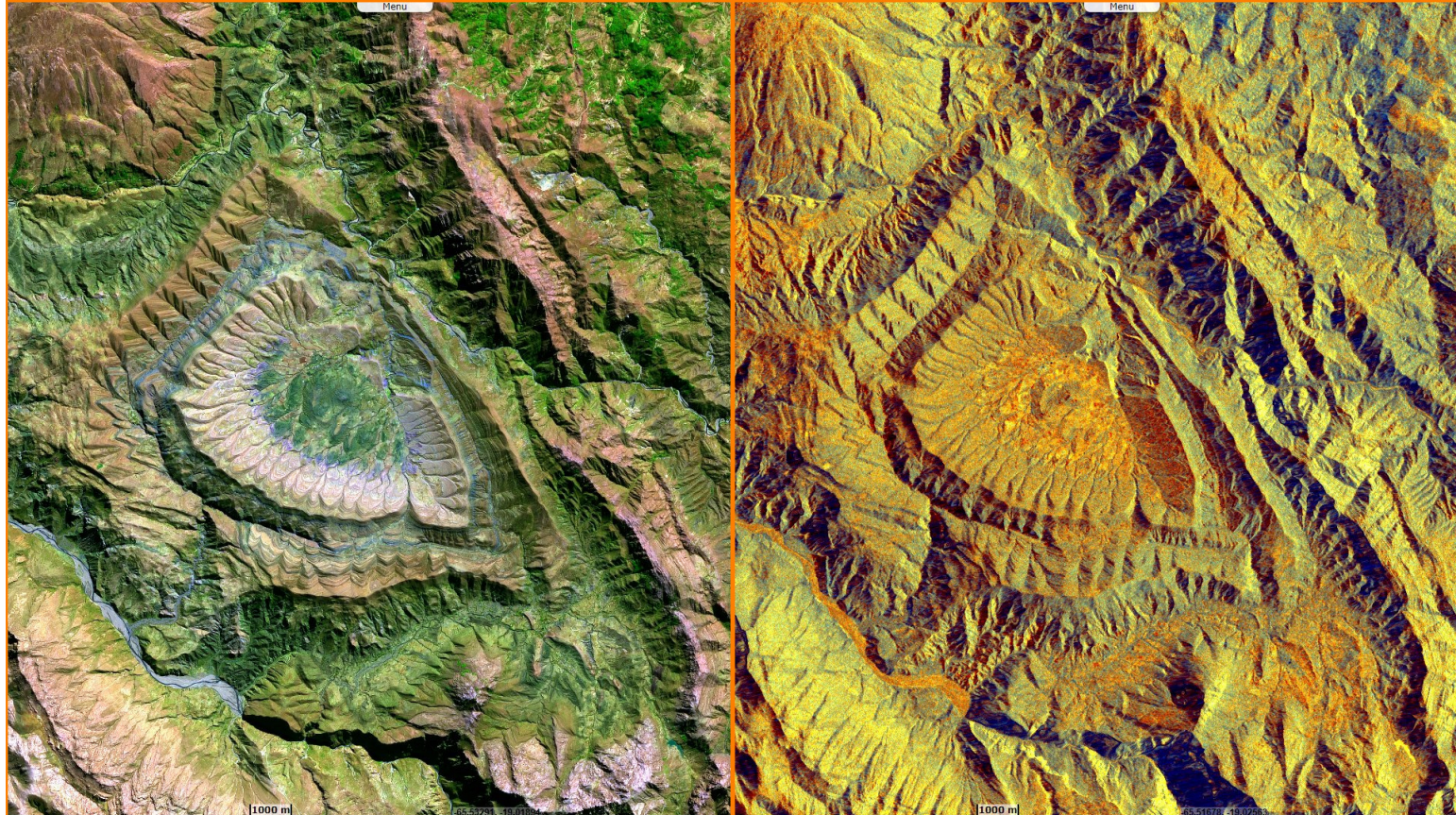
Keyword(s): Land, geology, tourism, UNESCO World Heritage tentative list, Bolivia

[2D Layerstack](#)



Fig. 1 - S2 (29.06.2022) / S1 (27.11.2021-21.12.2021) - Maragua is located 70 km from Sucre, the historical capital of Bolivia.

[2D view](#) [2D view](#)

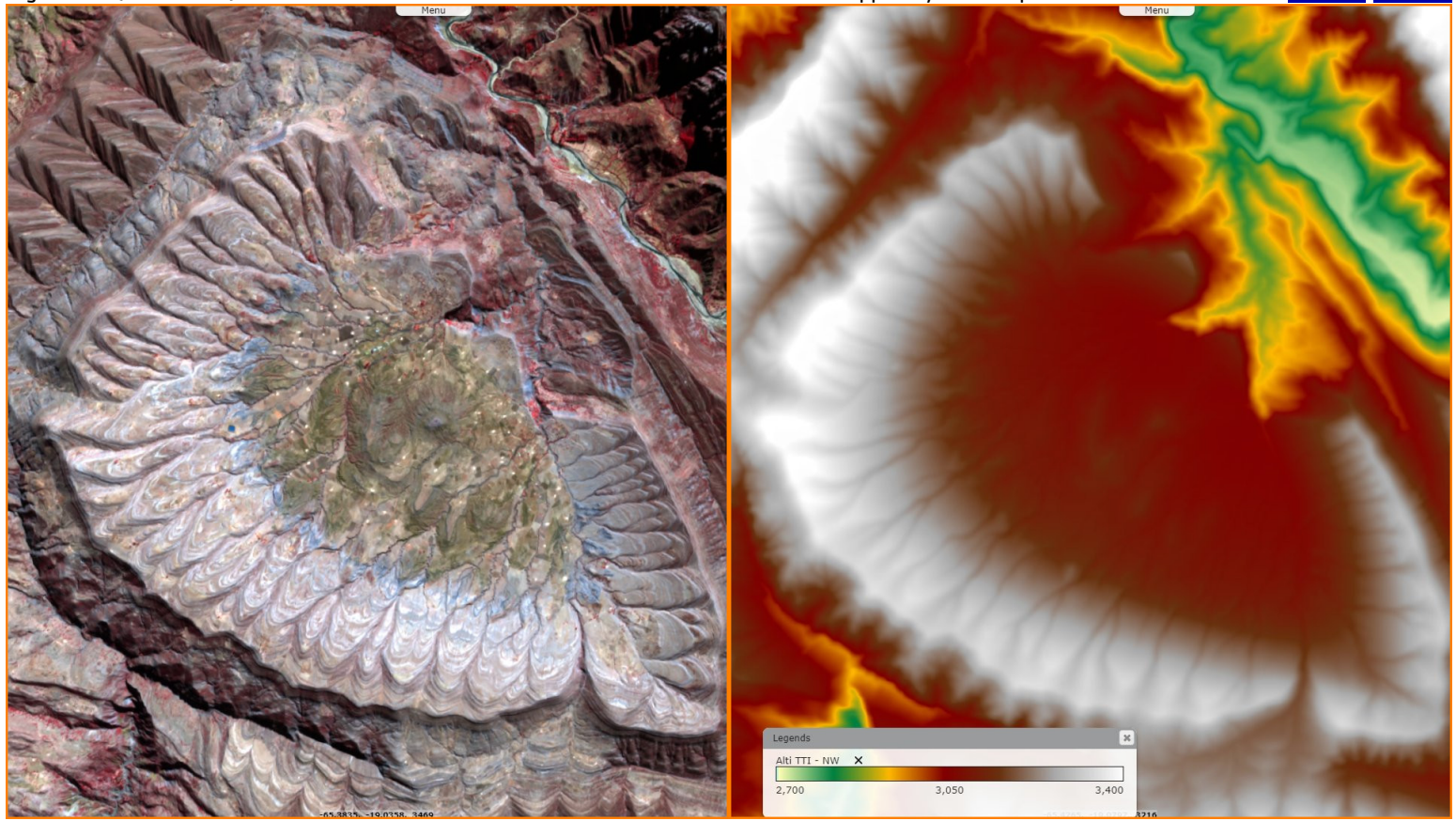


Maragua lies on a syncline that constitutes an impressive geological formation corresponding to the Mesozoic era of the Cretaceous period.



Fig. 2 - S2 (29.06.2022) / COP-DEM - Fossilized traces of dinosaurs are available in the upper layers of depression.

[3D view](#) [3D view](#)



The site contains numerous tracks and remains of dinosaurs: traces corresponding to a theropod of enormous size; the trace of an ankylosaur calf; a pit that could be a nest or a dinosaur wallow; the skull and jaw of a Cretaceous crocodile about 67-70 million years old.

*The views expressed herein can in no way be taken to reflect the official opinion of the European Space Agency or the European Union.  
Contains modified Copernicus Sentinel data 2022, processed by VisioTerra.*

More on European Commission space:							
More on ESA:				<a href="#">S-1 website</a>	<a href="#">S-2 website</a>	<a href="#">S-3 website</a>	
More on Copernicus program:				<a href="#">SciHub portal</a>	<a href="#">COP Hub portal</a>	<a href="#">Inthub portal</a>	<a href="#">Colhub portal</a>
More on VisioTerra:				<a href="#">Sentinel Vision Portal</a>	<a href="#">Envisat+ERS portal</a>	<a href="#">Swarm+GOCE portal</a>	<a href="#">CryoSat portal</a>