

# Colours of the Hejaz mountain range, Saudi Arabia

Sentinel-2 MSI acquired on 16 December 2017 at 08:03:19 UTC

Author(s): Sentinel Vision team, VisioTerra, France - [svp@visioterra.fr](mailto:svp@visioterra.fr)

Keyword(s): Mountain range, volcanism, geology, reg, Saudi Arabia, Red Sea rift.



[2D Layerstack](#)

Fig. 1 - S2 (16.12.2017) - The Hejaz ("barrier") is the coastal range located in the west of Saudi Arabia.

[2D view](#)

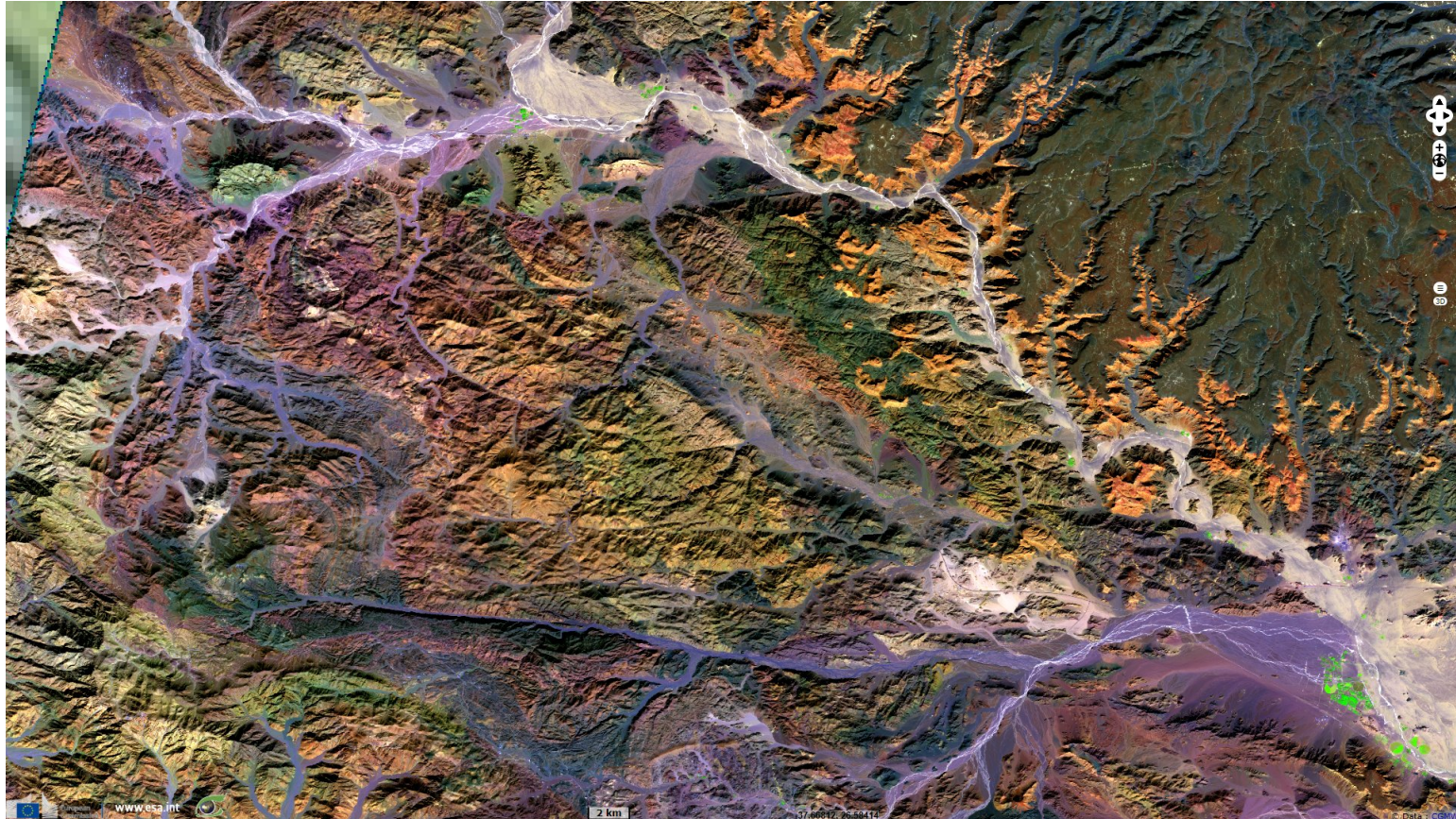


Fig. 2 - S2 (16.12.2017) - This is the eastern escarpment of the Red Sea rift that separated the Arabian & Nubian plates ~40M years ago.

[3D view](#)

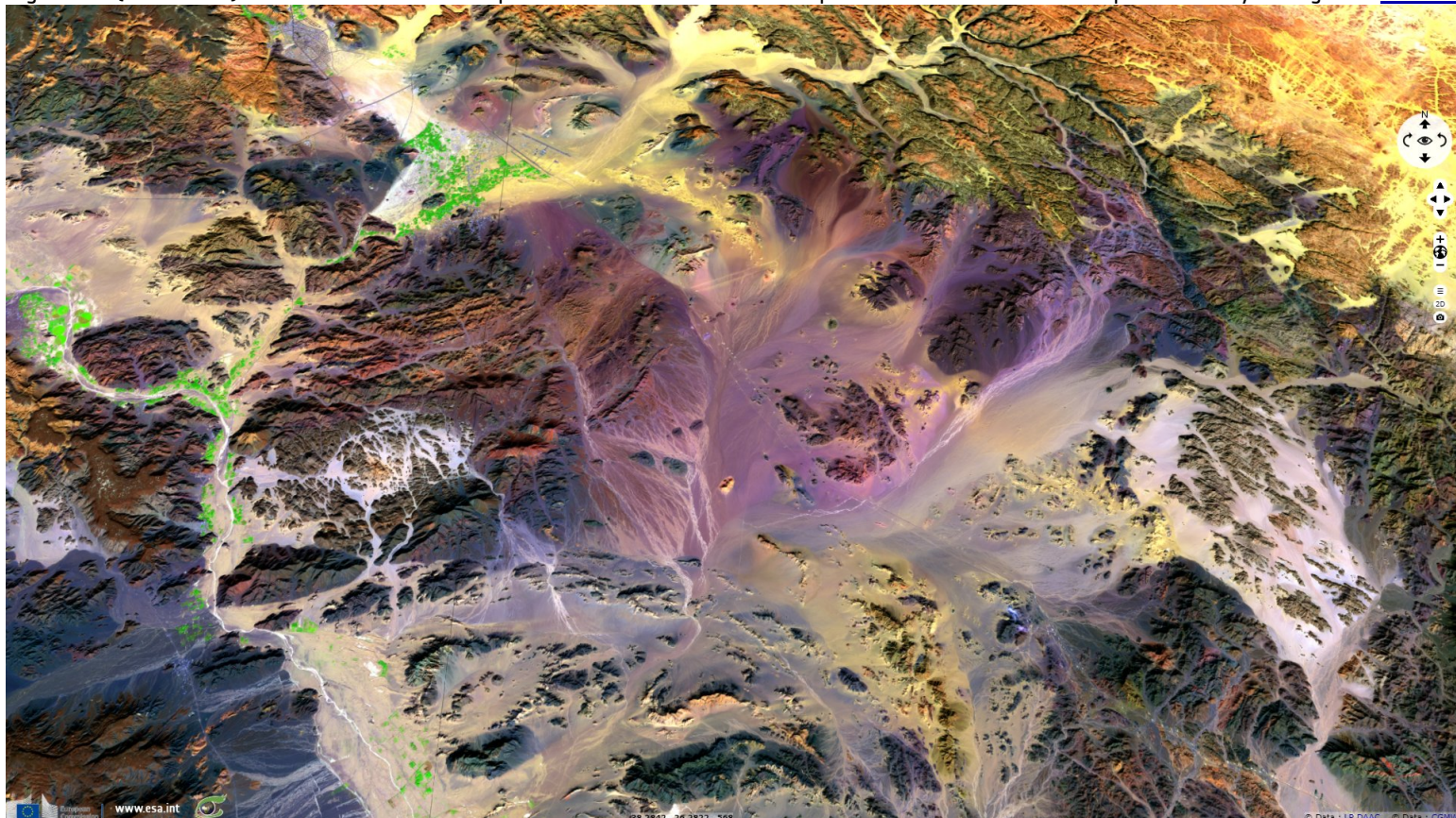




Fig. 3 - S2 (16.12.2017) - The region around Medina is rich in geologic features, some of them due to its recent volcanic activity.

[3D view](#)

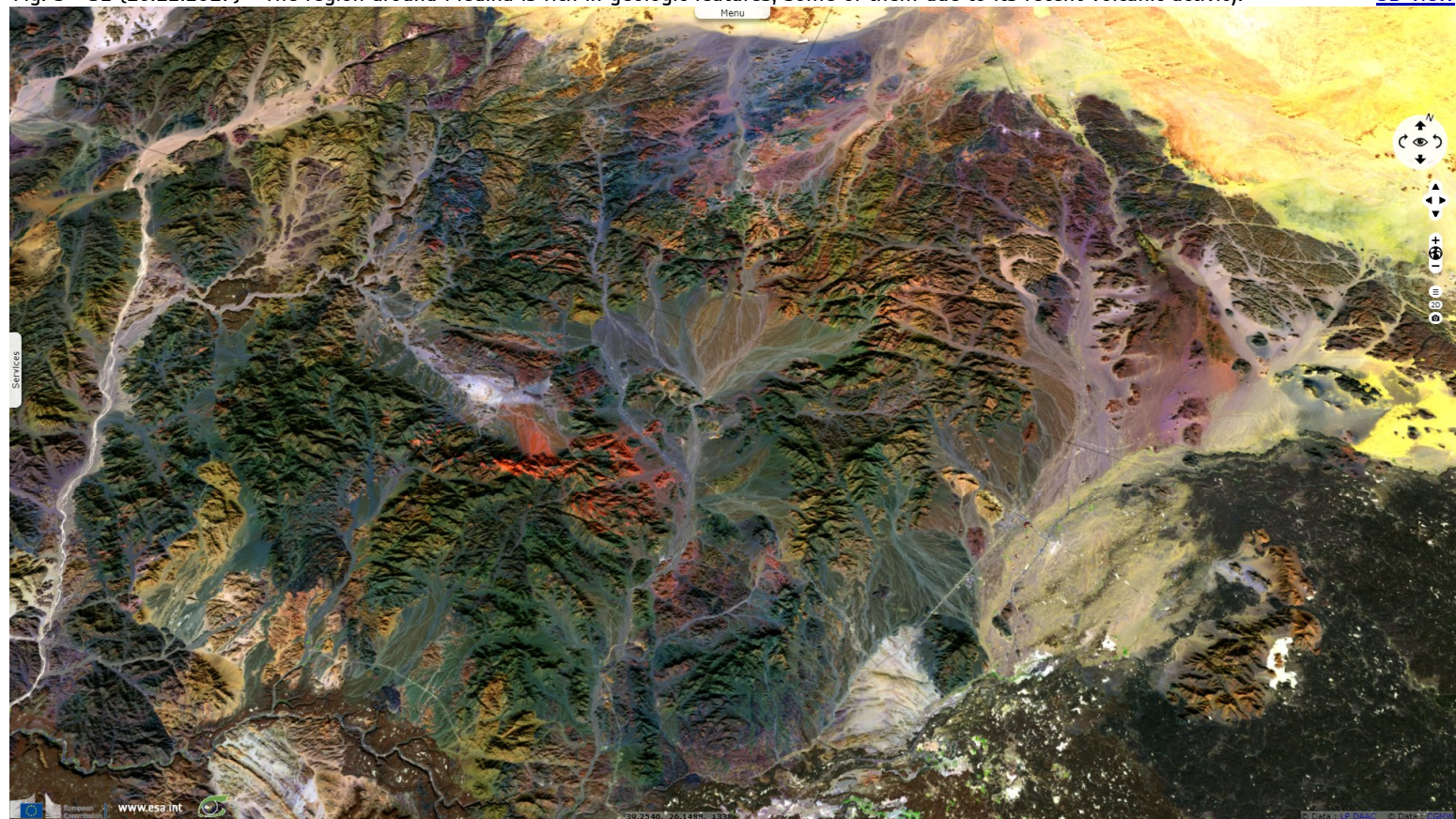


Fig. 4 - S2 (16.12.2017) - Flash floods eroded the landscape, unlike the deserts further east where the wind is the main eroding force.

[3D view](#)

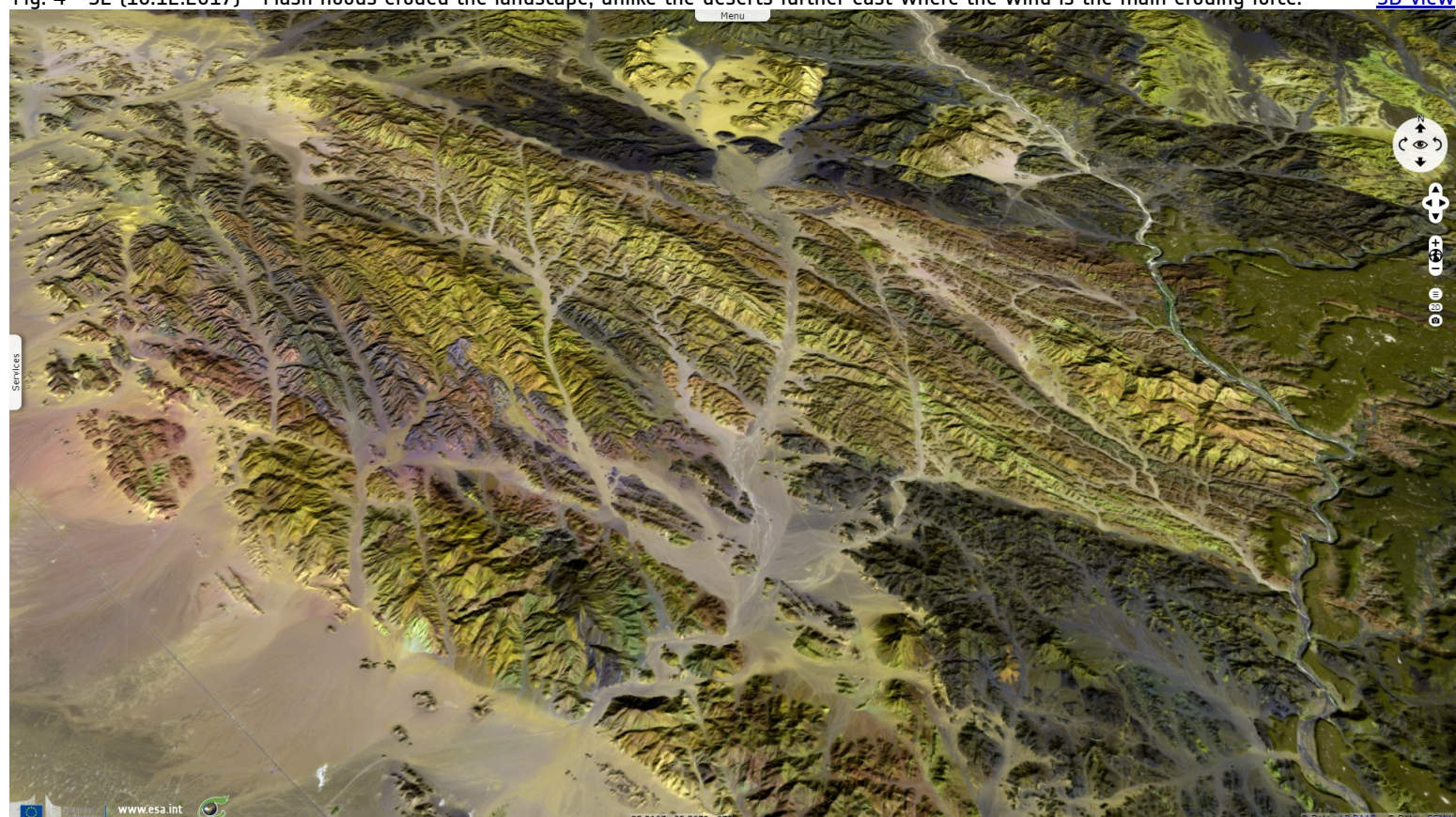
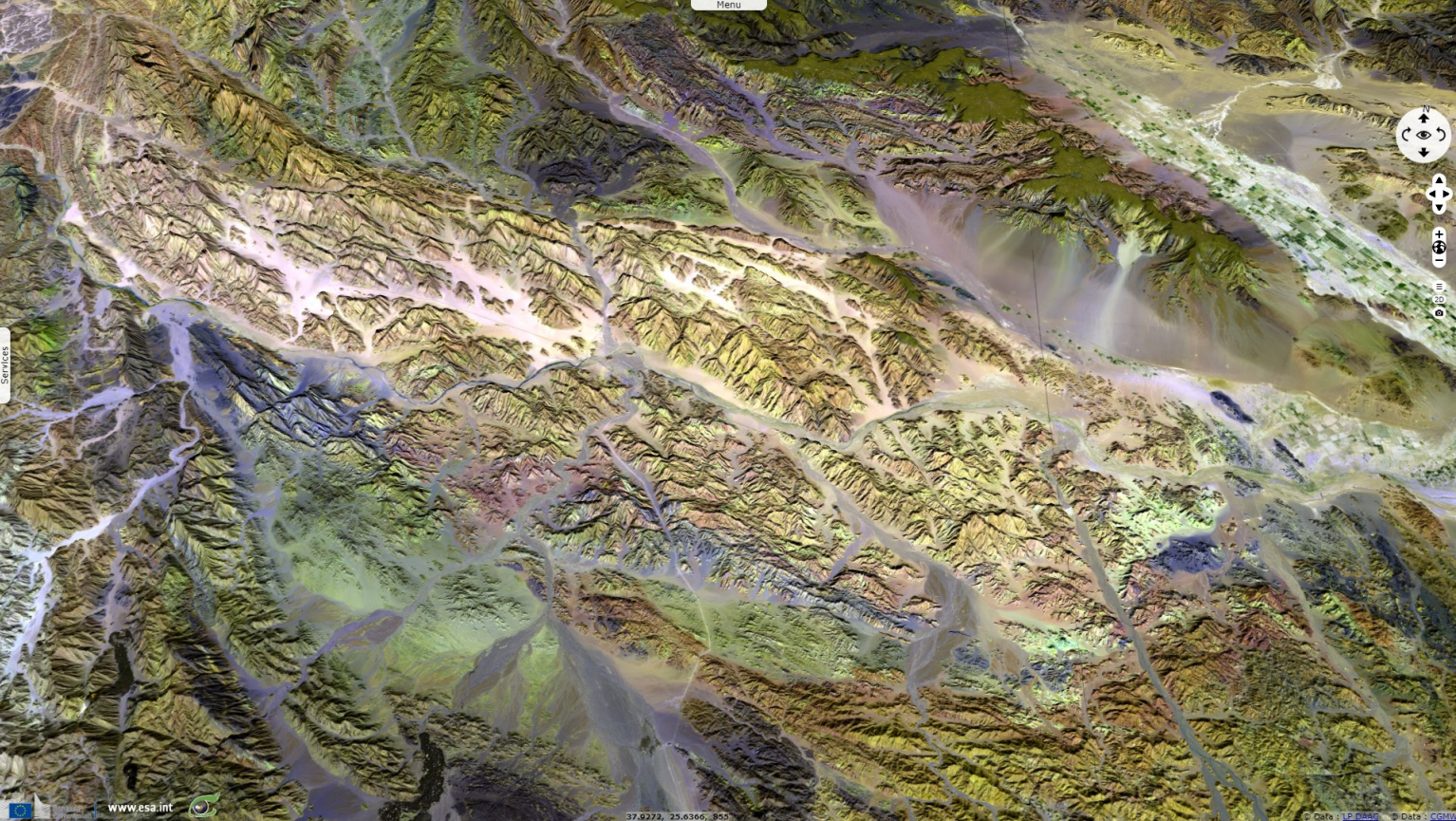









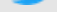






Fig. 5 - S2 (16.12.2017) - Sentinel-2 infrared channels can reveal this wealth of colours invisible to the human eye.

[3D view](#)



*The views expressed herein can in no way be taken to reflect the official opinion of the European Space Agency or the European Union.  
Contains modified Copernicus Sentinel data 2020, processed by VisioTerra.*

More on European Commission space:							
More on ESA:				<a href="#">S-1 website</a>	<a href="#">S-2 website</a>	<a href="#">S-3 website</a>	
More on Copernicus program:				<a href="#">Scihub portal</a>	<a href="#">Cophub portal</a>	<a href="#">Inthub portal</a>	<a href="#">Colhub portal</a>
More on VisioTerra:				<a href="#">Sentinel Vision Portal</a>	<a href="#">Envisat+ERS portal</a>	<a href="#">Swarm+GOCE portal</a>	<a href="#">CryoSat portal</a>