

Manaus hard hit by the pandemic, Amazonas state, Brazil

Sentinel-2 MSI acquired on 27 July 2019 at 14:20:49 UTC
Sentinel-1 CSAR IW acquired on 21 December 2020 at 09:39:22 UTC
Sentinel-1 CSAR IW acquired on 02 January 2021 at 09:39:22 UTC
Sentinel-1 CSAR IW acquired on 14 January 2021 at 09:39:21 UTC

Author(s): Sentinel Vision team, VisioTerra, France - syp@visioterra.fr

Keyword(s): Health, Amazon river, Brazil

[2D Layerstack](#)

Fig. 1 - S1 (21.12.2020-14.01.2021) - Manaus is the capital and largest city of the Brazilian state of Amazonas. It is located in the center of the Amazon rainforest.

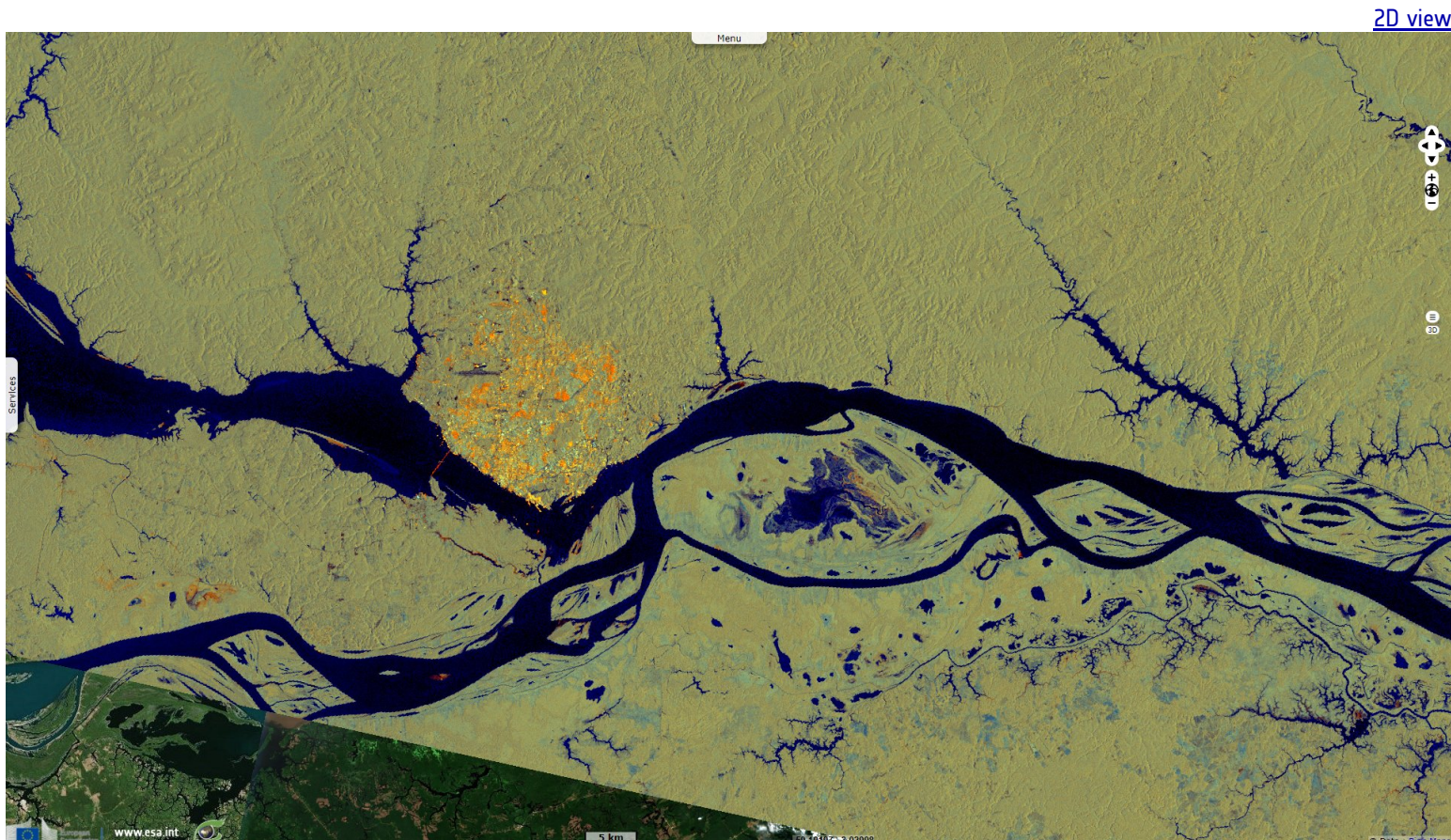
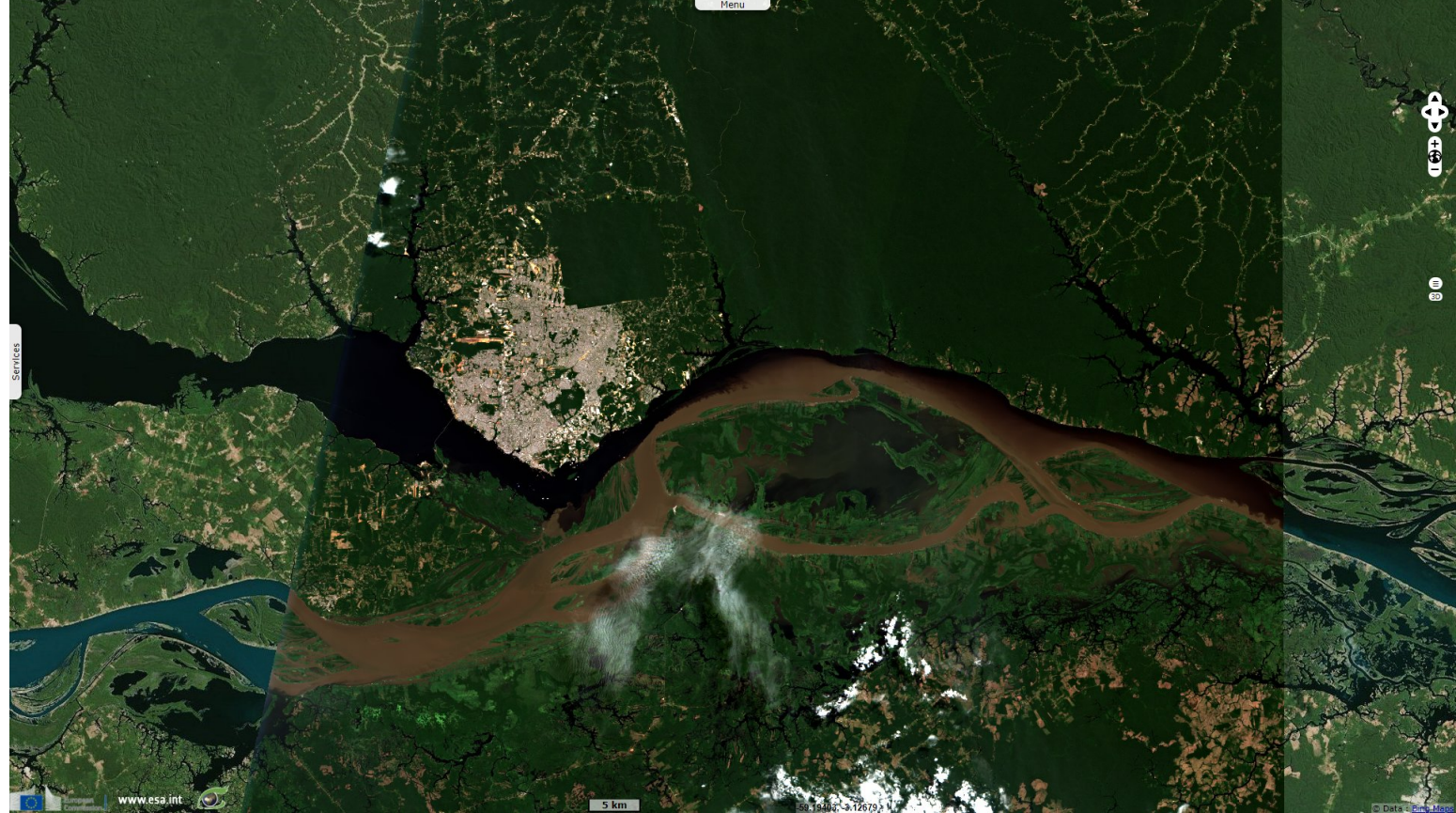


Fig. 2 - S2 (27.07.2019) - It is situated near the confluence of the Negro and Solimões rivers, 1300km the the mouth of the Amazon river. [2D view](#)



During the COVID-19 pandemic in Brazil, an estimated 76% of the population of Manaus was infected with coronavirus.

Fig. 3 - S1 (21.12.2020-14.01.2021) - However, a second outbreak infected people in Manaus, this time with a variant starting in early January 2021. [2D view](#)

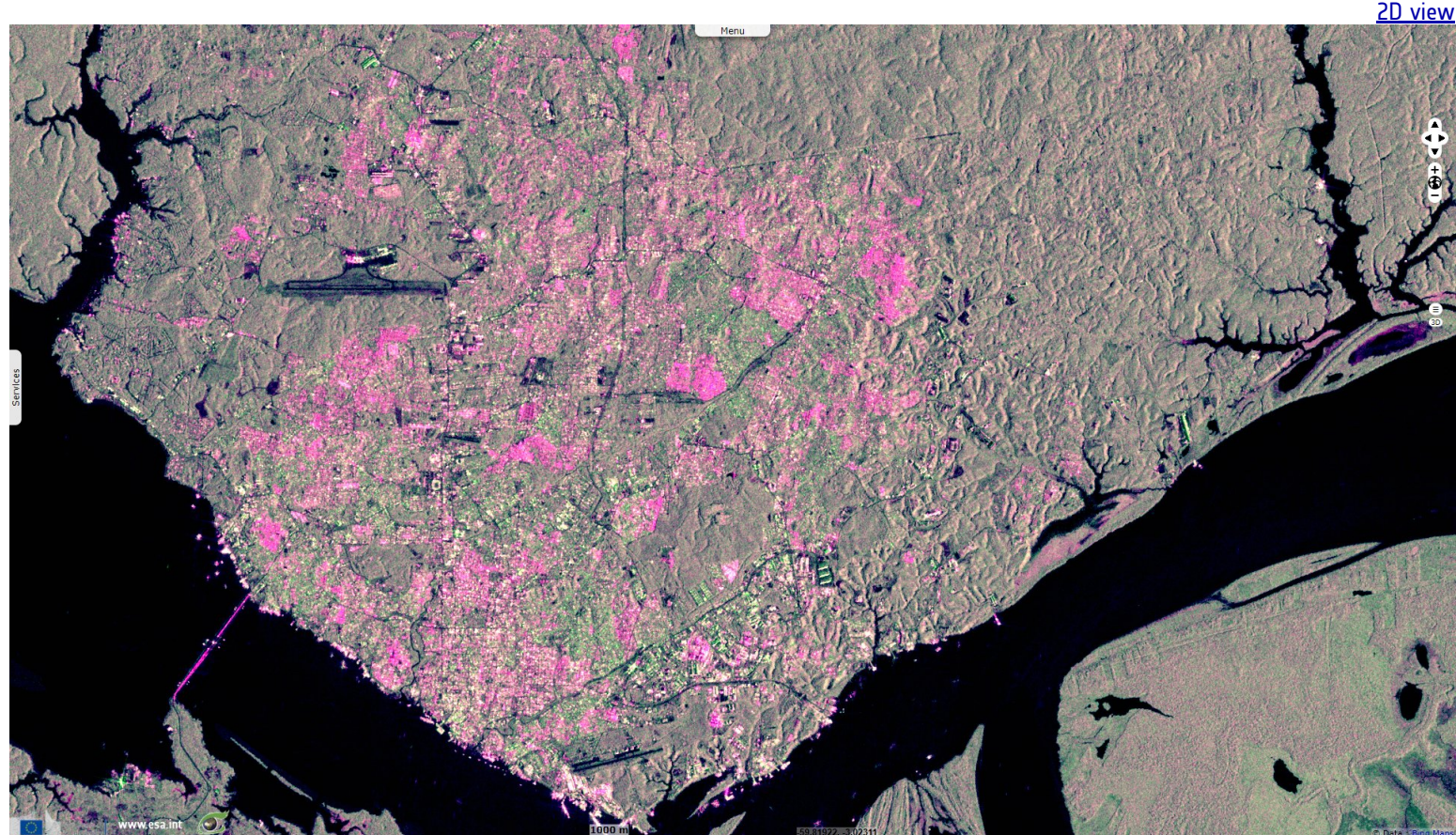














Fig. 4 - S2 (27.07.2019) - The death rate has quadrupled, the death toll due to covid-19 now exceeds 5000 in January.

[2D view](#)



*The views expressed herein can in no way be taken to reflect the official opinion of the European Space Agency or the European Union.
Contains modified Copernicus Sentinel data 2021, processed by VisioTerra.*

More on European Commission space:							
More on ESA:				S-1 website	S-2 website	S-3 website	
More on Copernicus program:				Scihub portal	Cophub portal	Inthub portal	Colhub portal
More on VisioTerra:				Sentinel Vision Portal	Envisat+ERS portal	Swarm+GOCE portal	CryoSat portal