

# Syrian civil war devastation on eastern Ghouta, Damascus suburb

Sentinel-2 MSI acquired on **08 December 2015** at 08:23:32 UTC  
Sentinel-1 CSAR IW acquired on **02 November 2017** from 03:33:39 to 03:34:54 UTC  
Sentinel-2 MSI acquired on **02 November 2018** at 08:21:01 UTC  
Sentinel-1 CSAR IW acquired on **29 October 2020** from 03:33:59 to 03:35:14 UTC  
Sentinel-2 MSI acquired on **26 December 2020** at 08:22:49 UTC

Author(s): Sentinel Vision team, VisioTerra, France - [svp@visioterra.fr](mailto:svp@visioterra.fr)

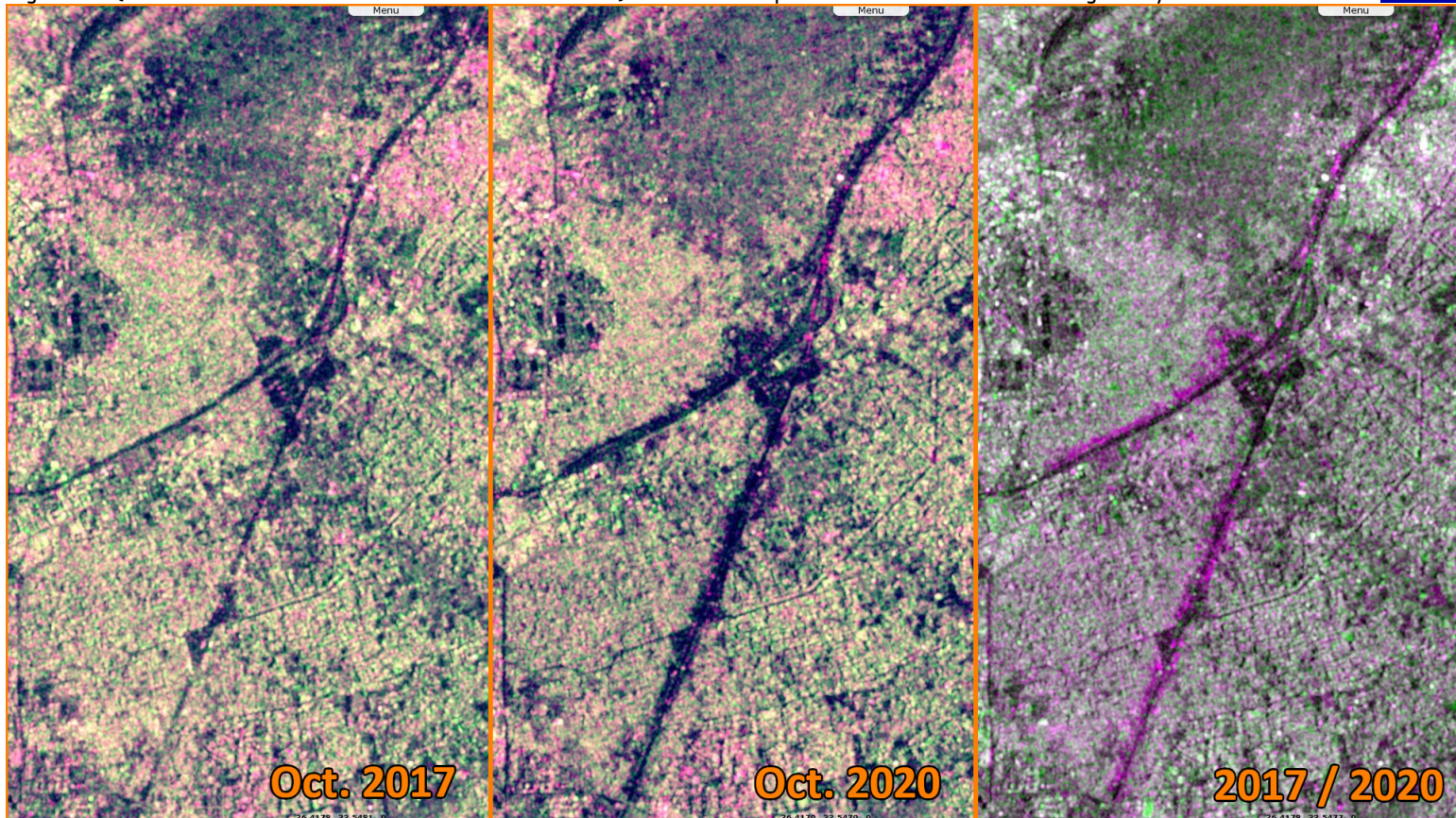
Keyword(s): Security, urban, capital city, Syria

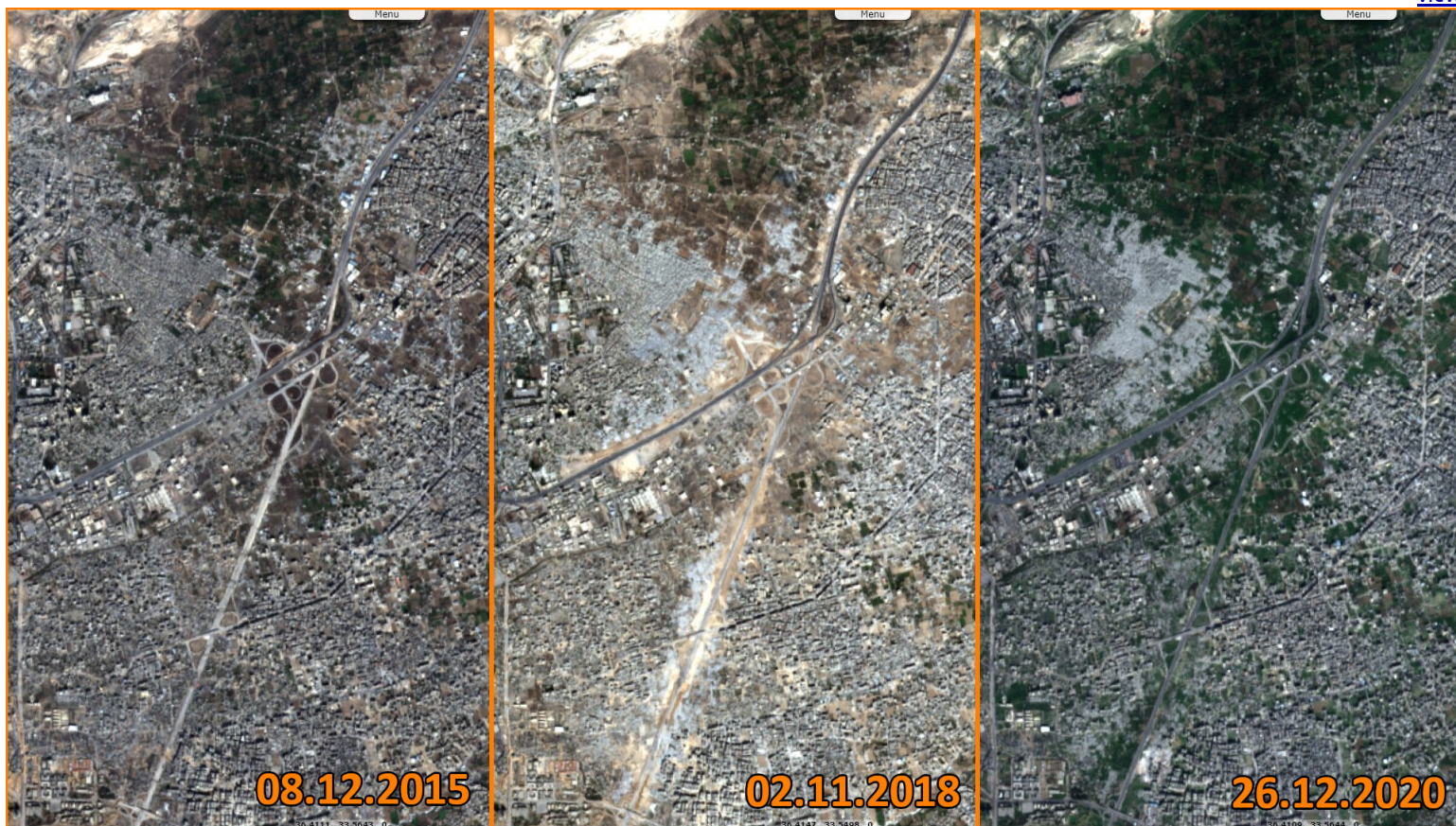


[2D Layerstack](#)

Fig. 1 - S1 (09.10.2017->02.11.2017 / 05.10.2020->29.10.2020) - Pulled down parts of eastern Ghouta following the Syrian civil war.

[3D view](#)





The views expressed herein can in no way be taken to reflect the official opinion of the European Space Agency or the European Union. Contains modified Copernicus Sentinel data 2022, processed by VisioTerra.

More on European Commission space:							
More on ESA:				<a href="#">S-1 website</a>	<a href="#">S-2 website</a>	<a href="#">S-3 website</a>	
More on Copernicus program:				<a href="#">SciHub portal</a>	<a href="#">Cophub portal</a>	<a href="#">Inthub portal</a>	<a href="#">Colhub portal</a>
More on VisioTerra:				<a href="#">Sentinel Vision Portal</a>	<a href="#">Envisat+ERS portal</a>	<a href="#">Swarm+GOCE portal</a>	<a href="#">CryoSat portal</a>



Funded by the EU and ESA

SED-1166-SentinelVision

