

Hong Kong loses its exceptions, China

Sentinel-1 CSAR IW acquired on 31 March 2018 at 10:33:09 UTC

Sentinel-2 MSI acquired on 25 January 2019 at 03:00:11 UTC

Sentinel-1 CSAR IW acquired on 24 June 2020 at 10:33:26 UTC

Author(s): Sentinel Vision team, VisioTerra, France - syp@visioterra.fr

Keyword(s): Urban, coastal, archipelago, China

[2D Layerstack](#)

Fig. 1 - S2 (25.01.2019) - Hong Kong became a British colony from 1842 to 1997 with a British style of government.

[2D view](#) [3D view](#)

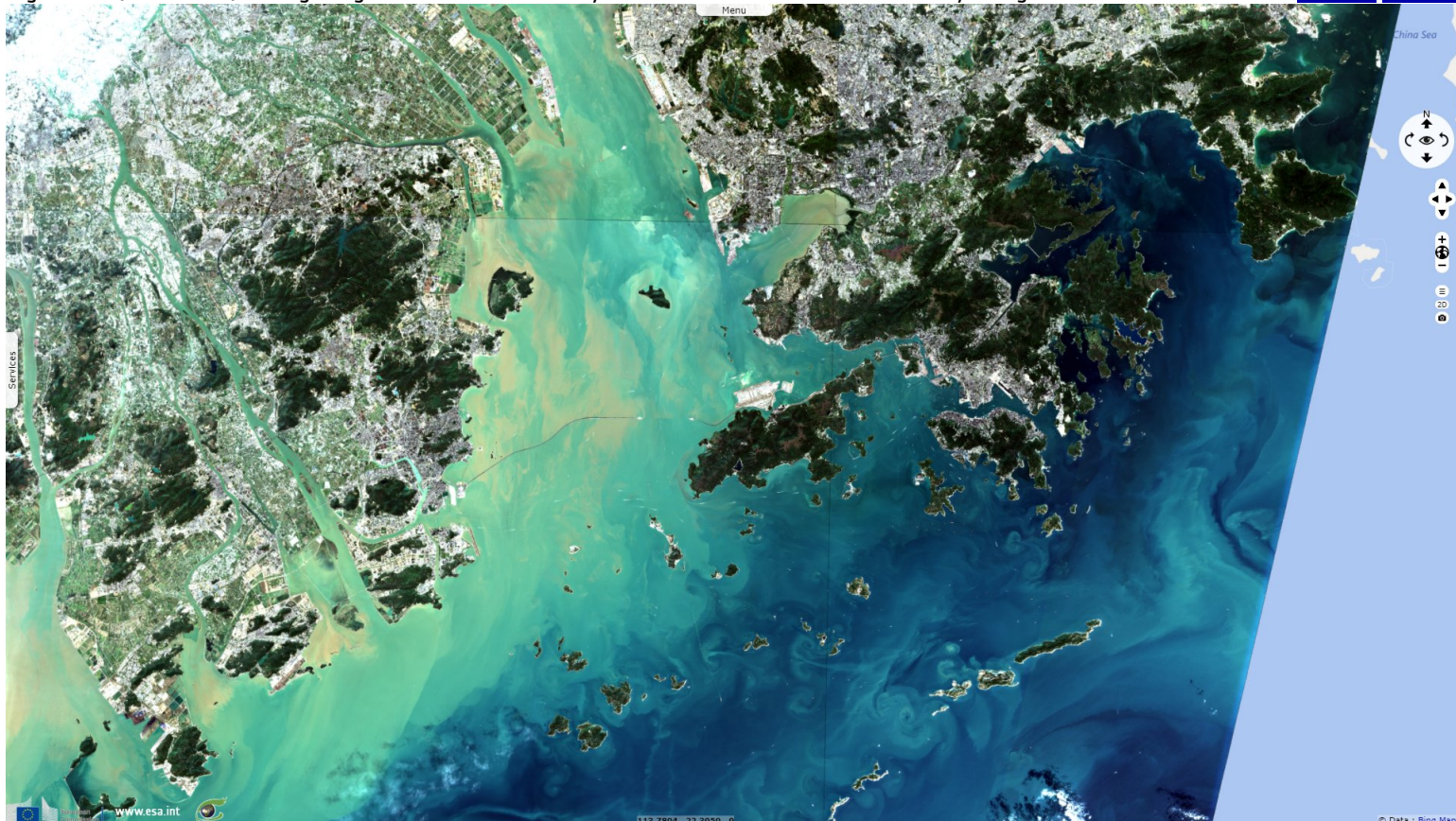


Fig. 2 - S1 (31.03.2018) - It counts 7 millions inhabitants, with a very high GDP per capita and globally the 3rd financial area.

[2D view](#) [3D view](#)

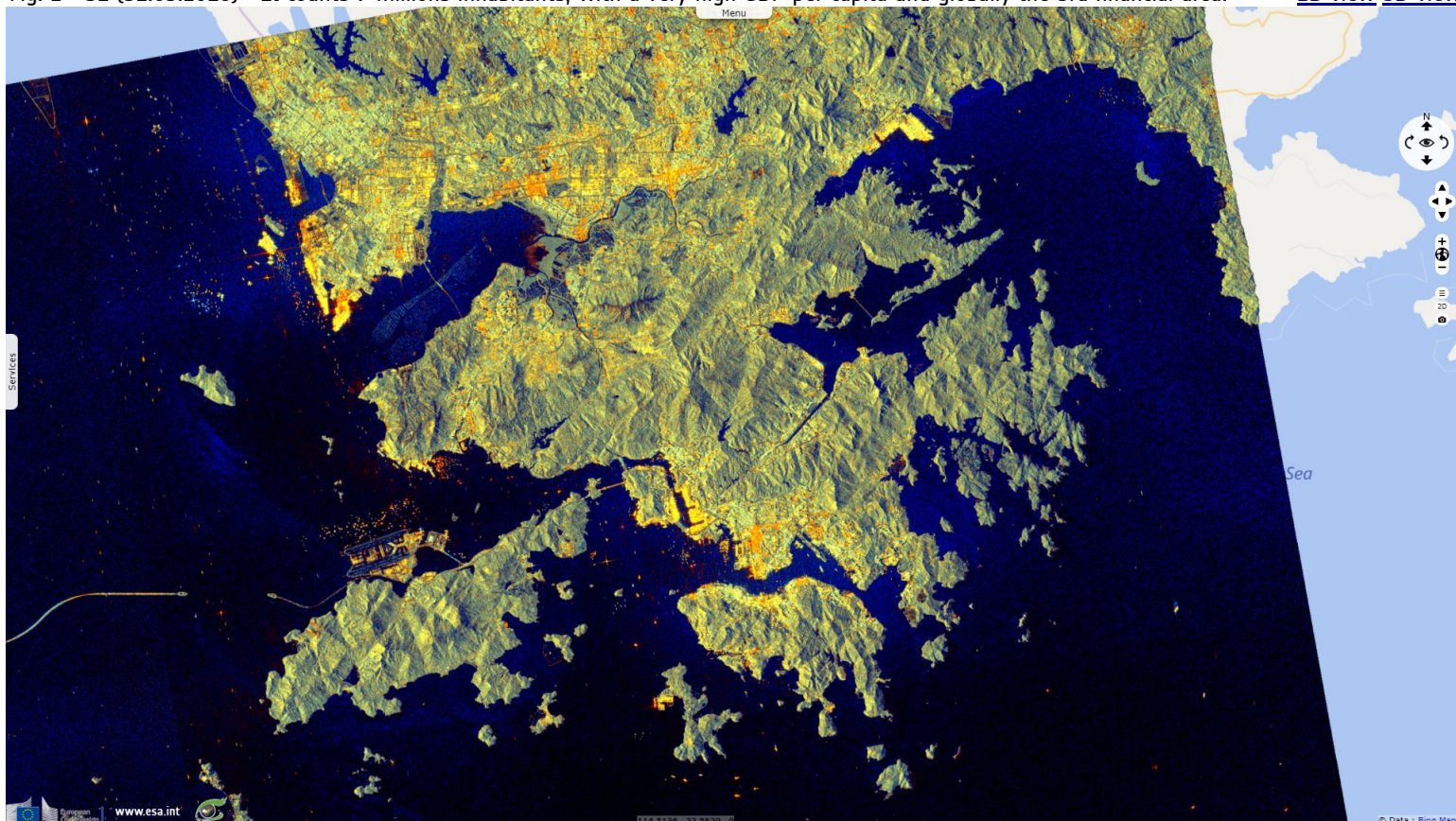
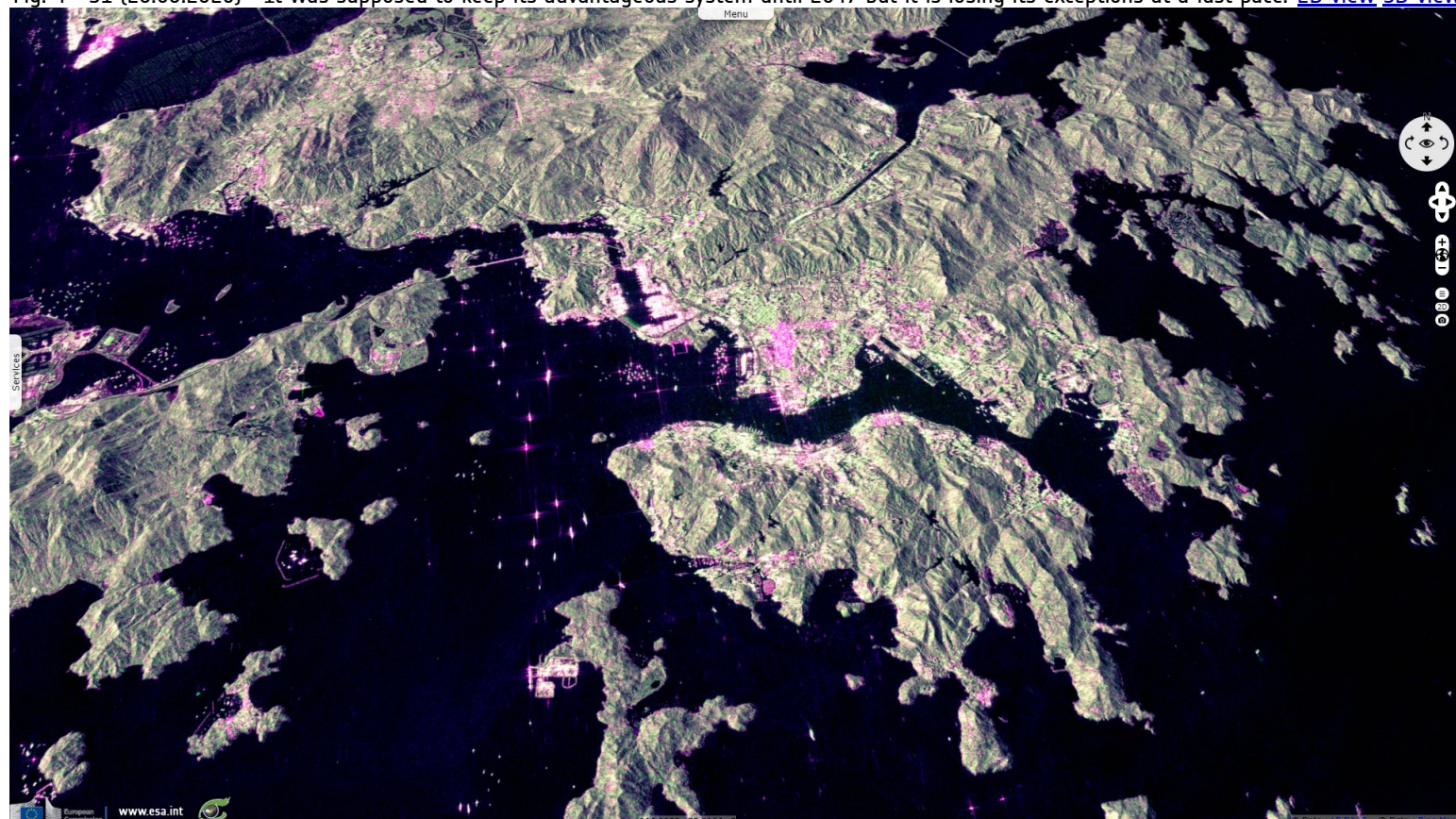


Fig. 3 - S2 (25.01.2019) - It was supposed to keep its autonomy and distinct democratic system for 50 years.

[2D view](#) [3D view](#)



Fig. 4 - S1 (26.06.2020) - It was supposed to keep its advantageous system until 2047 but it is losing its exceptions at a fast pace. [2D view](#) [3D view](#)



*The views expressed herein can in no way be taken to reflect the official opinion of the European Space Agency or the European Union.
Contains modified Copernicus Sentinel data 2020, processed by VisioTerra.*

More on European Commission space:						
More on ESA:				S-1 website	S-2 website	S-3 website
More on Copernicus program:				SciHub portal	Cophub portal	Inthub portal
More on VisioTerra:				Sentinel Vision Portal	Envisat+ERS portal	Swarm+GOCE portal
					CryoSat portal	