

Underground astronaut training in Škocjan caves regional park, Slovenia

Sentinel-2 MSI acquired on 01 January 2017 at 10:04:12 UTC
Sentinel-1 CSAR IW acquired on 18 September 2019 at 16:58:02 UTC

Author(s): Sentinel Vision team, VisioTerra, France - svp@visioterra.fr

Keyword(s): Land, river, erosion, ESA, UNESCO World Heritage, Slovenia



[2D Layerstack](#)

Fig. 1 - S2 (01.01.2017) - 4,3,2 natural colour - The Karst Plateau region lies between Italy and Slovenia.

[2D view](#)

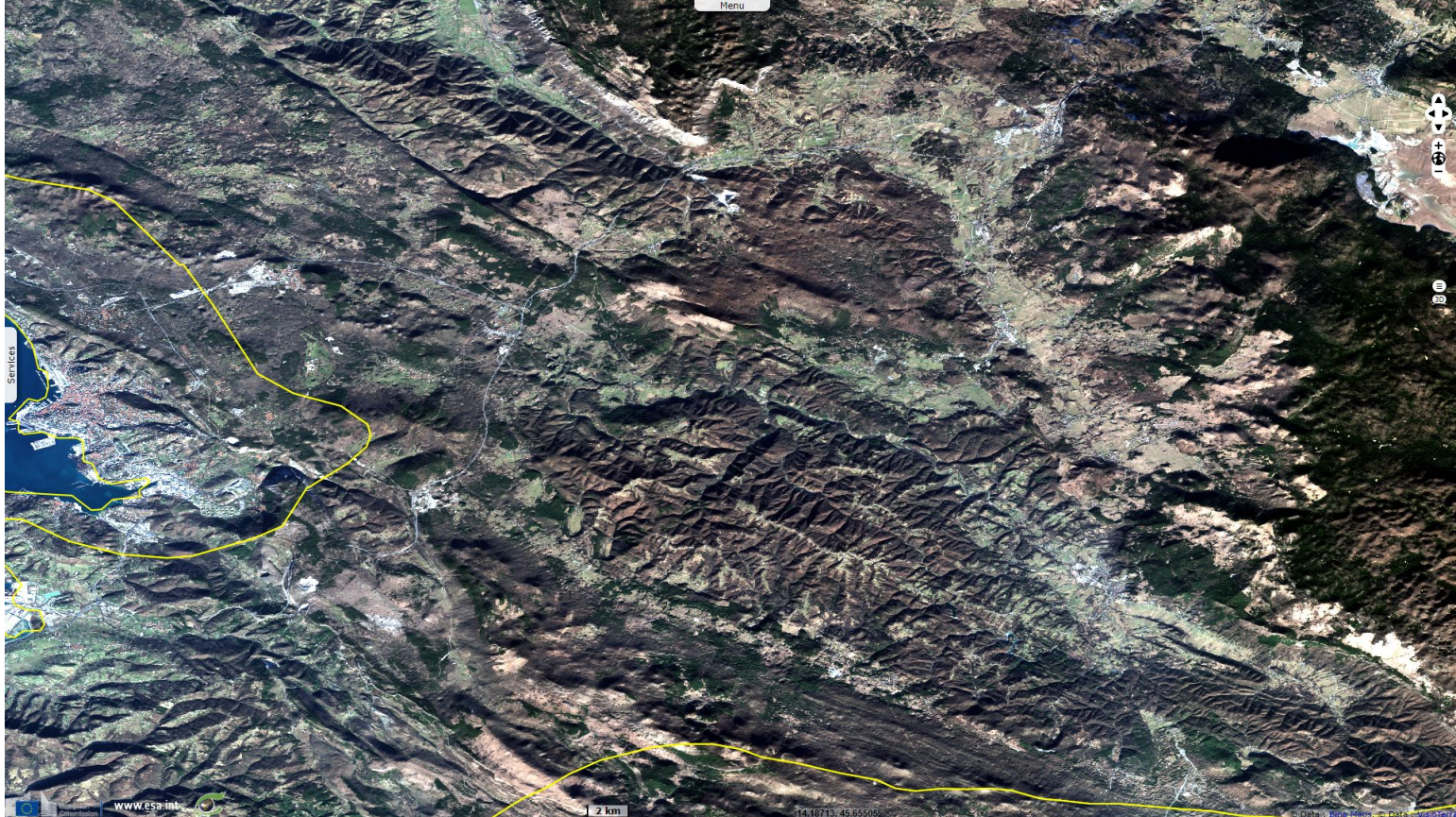


Fig. 2 - 11,8,4 composite - It gave its name to karst topography, characterized by underground drainage systems with sinkholes & caves.

[3D view](#)

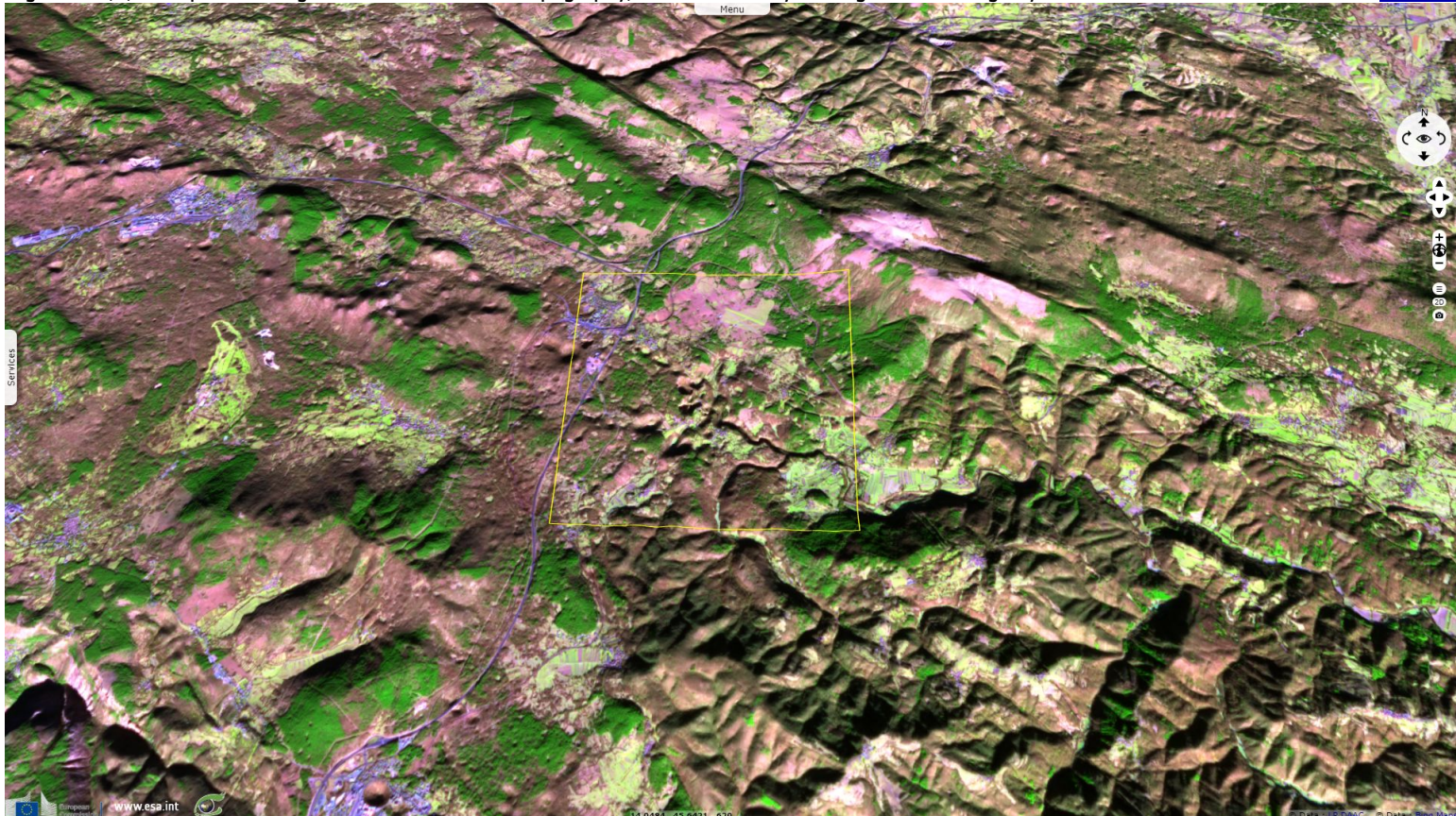














Fig. 3 - S1 (18.09.2019) - vv,vh,vv composite - It is formed from the dissolution of soluble rocks such as limestone, dolomite & gypsum. [3D view](#)



Fig. 4 - 4,3,2 natural colour - Speleology was born in these caves, chosen as a training ground for astronauts within the CAVES program. [3D view](#)



*The views expressed herein can in no way be taken to reflect the official opinion of the European Space Agency or the European Union.
Contains modified Copernicus Sentinel data 2019, processed by VisioTerra.*

More on European Commission space:						
More on ESA:				S-1 website	S-2 website	S-3 website
More on Copernicus program:				SciHub portal	Cophub portal	Inthub portal
More on VisioTerra:				Sentinel Vision Portal	Envisat+ERS portal	Swarm+GOCE portal
					CryoSat portal	