

# Mount Erebus on Ross Island

Sentinel-1 CSAR IW acquired on **19 January 2016** from 11:25:50 to 11:26:44 UTC

Sentinel-1 CSAR IW acquired on **19 January 2016** at 13:03:35 UTC

Sentinel-1 CSAR IW acquired on **24 January 2016** from 11:33:56 to 11:34:50 UTC

Sentinel-1 CSAR EW acquired on **24 January 2016** at 14:48:21 UTC

Sentinel-2 MSI acquired on **12 December 2016** at 20:45:12 UTC

Author(s): Sentinel Vision team, VisioTerra, France - [svp@visioterra.fr](mailto:svp@visioterra.fr)

Keyword(s): Polar, cryosphere, ice pack, science station, glacier tongue, volcano, hotspot, lava lake, Ross sea, Antarctica



[3D Layerstack](#)

Fig. 1 - S1 EW (24.01.2016) - hh,hv,ndi(hv,hh) colour composite - McMurdo Sound, Drygalski ice tongue at left & Ross island at right. [3D view](#) [2D view](#)

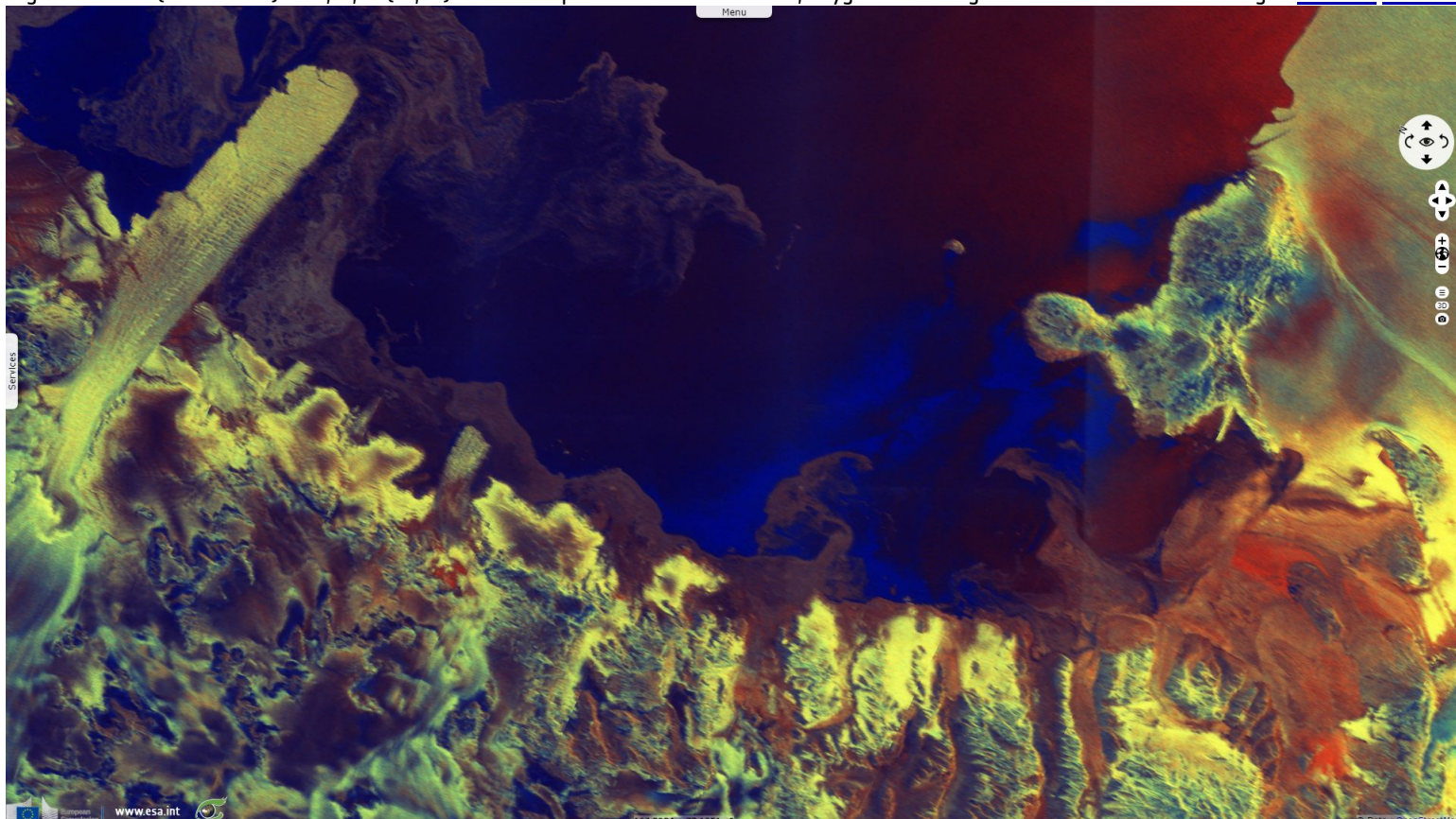


Fig. 2 - S1 IW (19.01.2016) - Ross volcanic island; Erebus glacier tongue shows at bottom, above McMurdo station & Scott base. [3D view](#) [2D view](#)

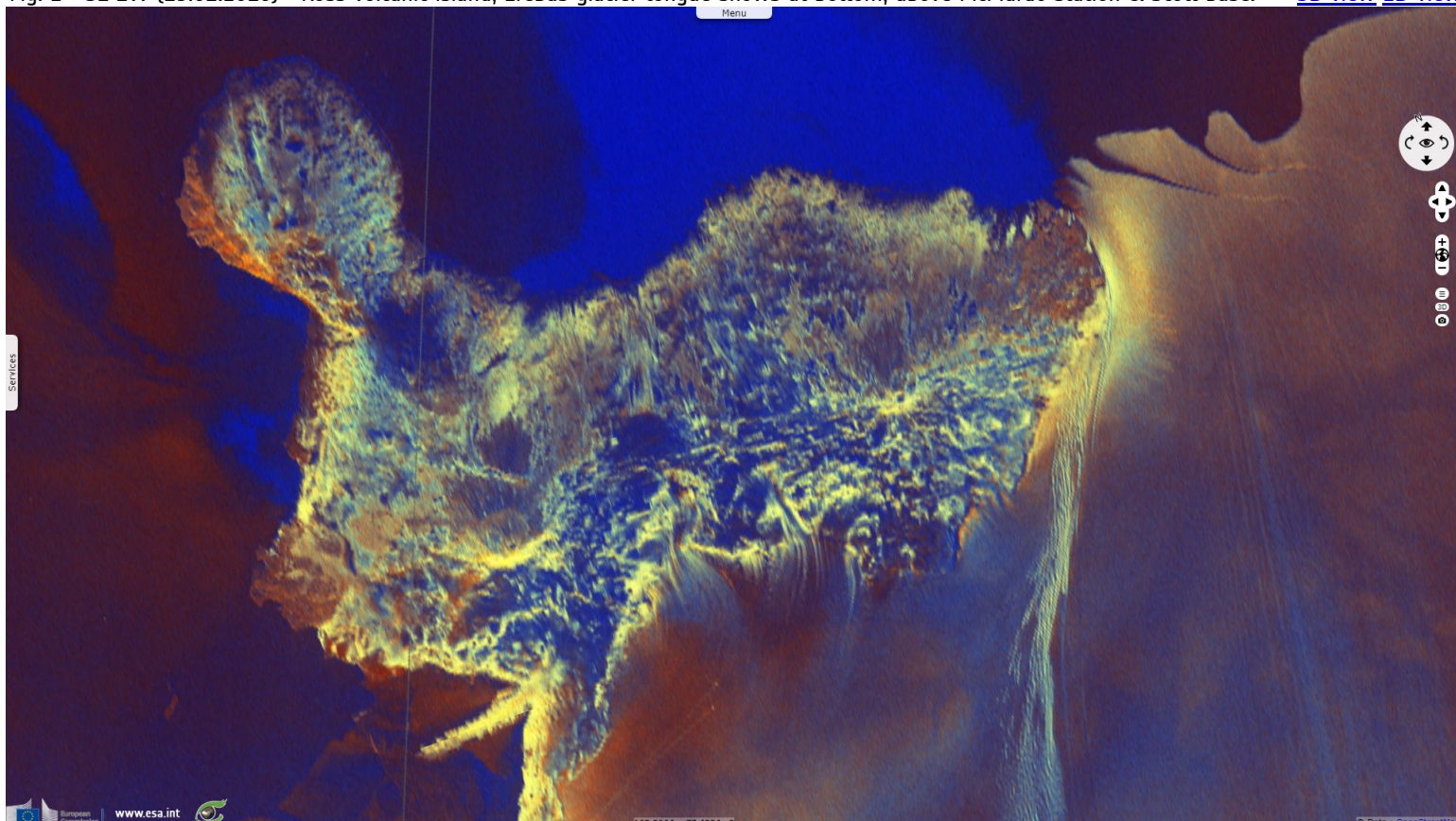
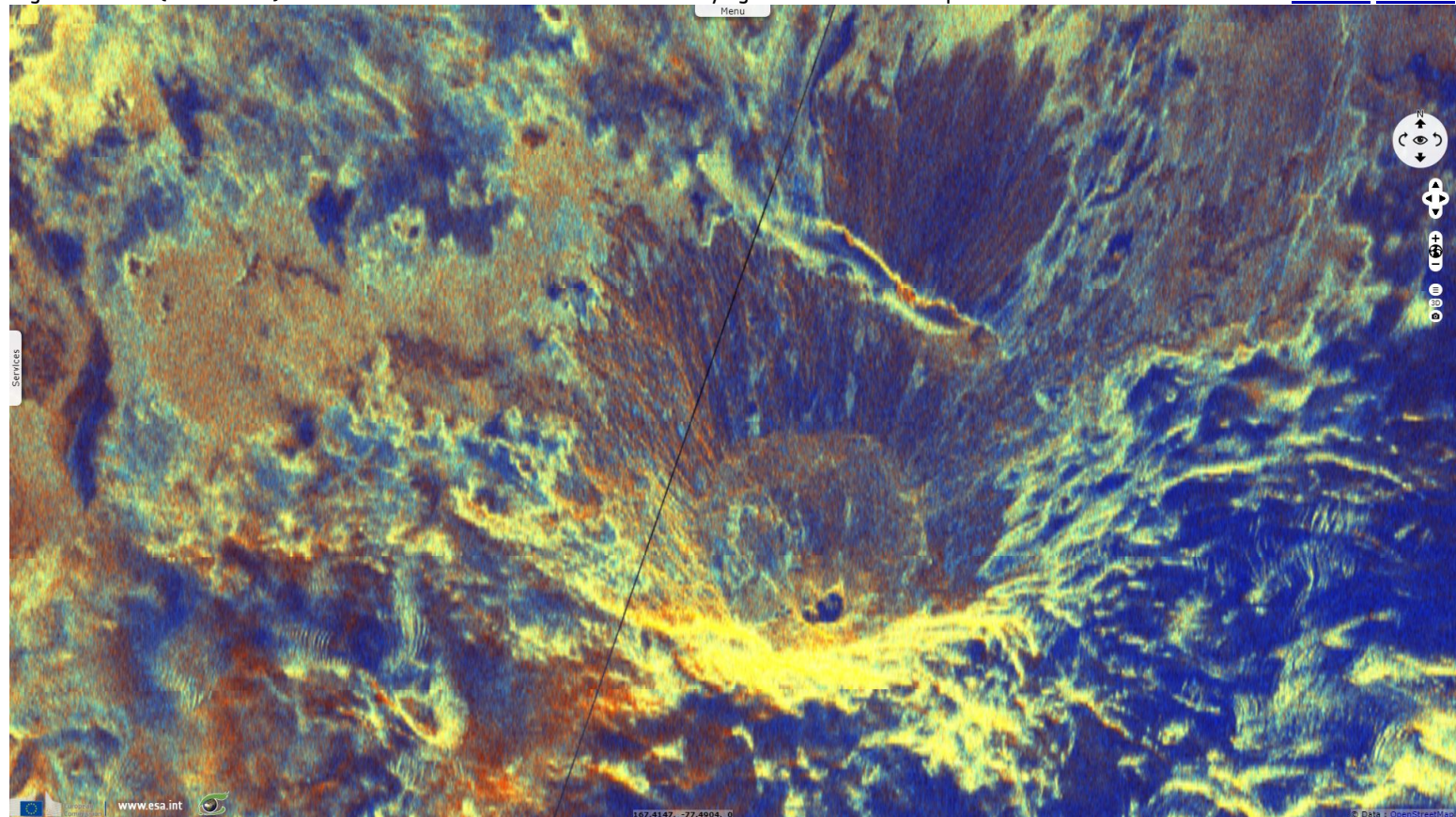




Fig. 3 - S1 IW (24.01.2016) - Mount Erebus is a basaltic shield volcano lying over a volcanic hotspot.

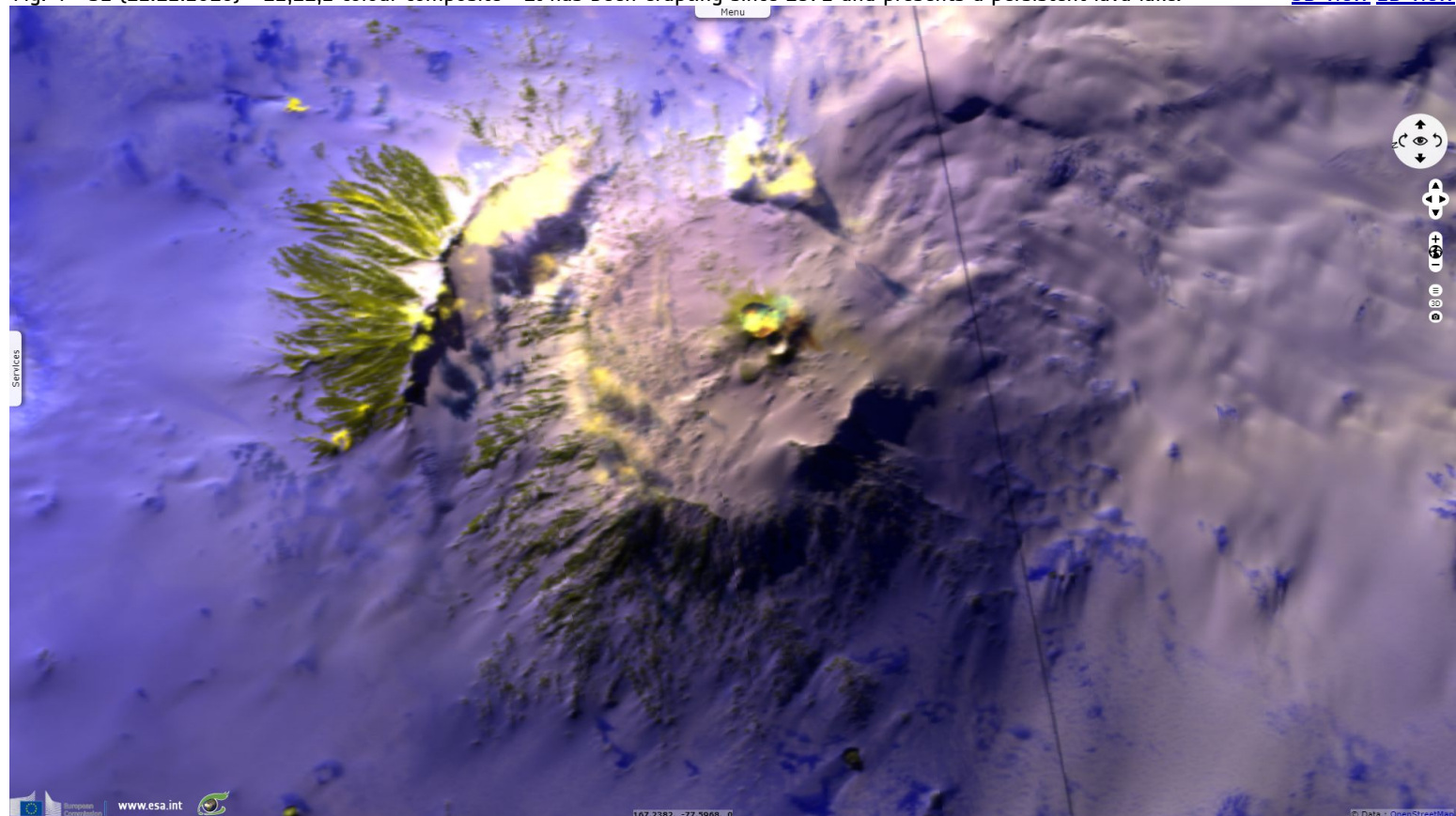
[3D view](#) [2D view](#)



Aboard HMS Erebus (Greek god of darkness) and HMS Terror, Ross expedition discovered Ross Island in Antarctica in 1841. It named its two major volcanoes after its two ships.

Fig. 4 - S2 (12.12.2016) - 12,11,2 colour composite - It has been erupting since 1972 and presents a persistent lava lake.

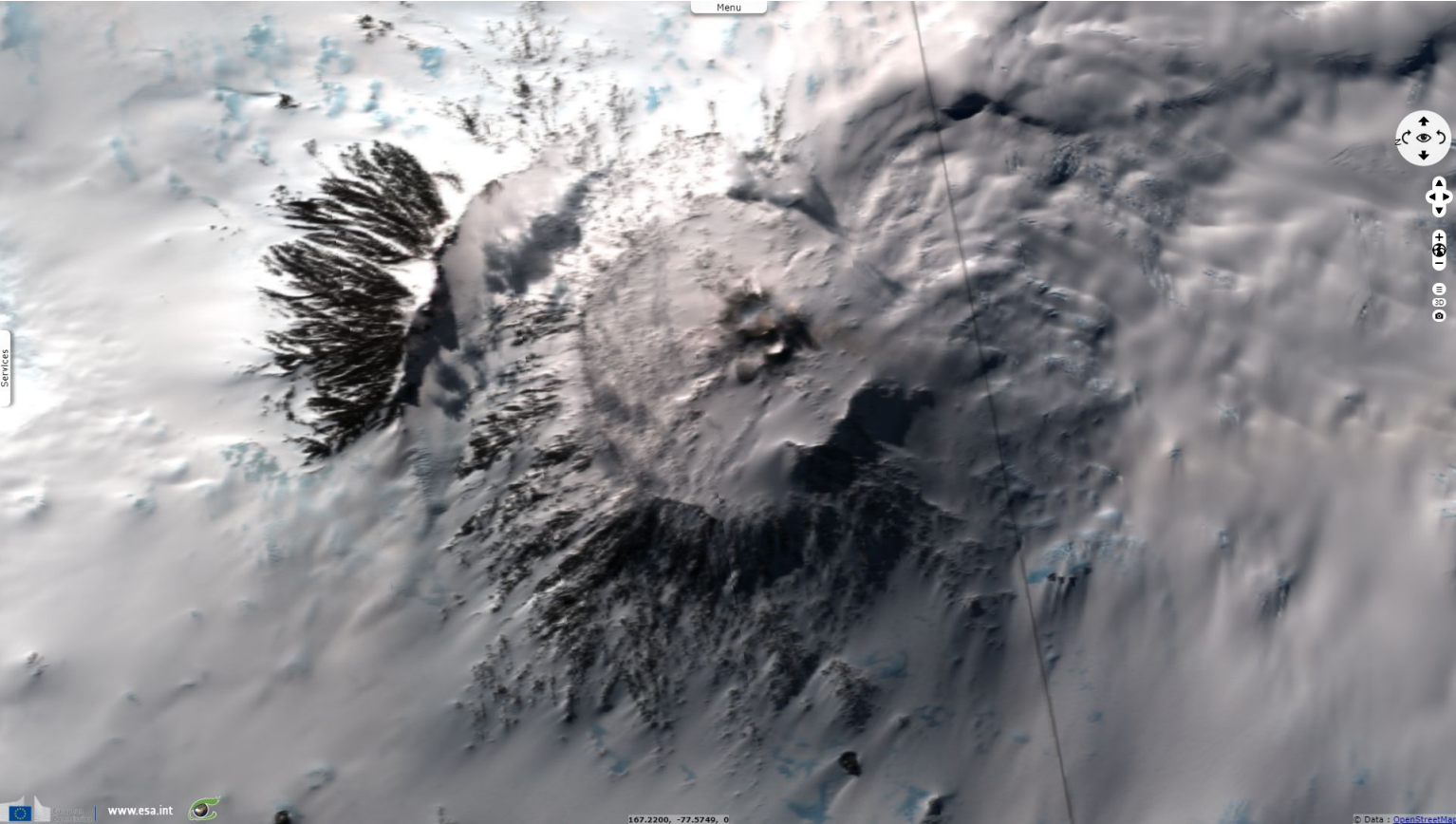
[3D view](#) [2D view](#)



In this land of adventurers, of darkness and of horrific tales, they didn't find aeon-old cyclopean cities but the then-erupting 3794m high Mt Erebus.















Fig. 5 - S2 (12.12.2016) - 8,4,3 colour composite - Its crater emits some smoke as a remainder of its activity. [3D view](#) [2D view](#)



It is the southernmost active volcano on Earth and second highest volcano on Antarctica.

*The views expressed herein can in no way be taken to reflect the official opinion of the European Space Agency or the European Union.*

More on European Commission space:									
More on ESA:				<a href="#">S-1 website</a>	<a href="#">S-2 website</a>	<a href="#">S-3 website</a>			
More on Copernicus program:				<a href="#">SciHub portal</a>	<a href="#">Cophub portal</a>	<a href="#">Inthub portal</a>	<a href="#">Colhub portal</a>		
More on VisioTerra:				<a href="#">Sentinel Vision Portal</a>	<a href="#">Envisat+ERS portal</a>	<a href="#">Swarm+GOCE portal</a>	<a href="#">CryoSat portal</a>	<a href="#">Proba-V portal</a>	