

Towers under construction demolished due to China's real estate crisis

Sentinel-2 MSI acquired on 21 January 2021 at 03:40:49 UTC
Sentinel-2 MSI acquired on 20 June 2021 at 03:35:39 UTC
Sentinel-1 CSAR IW acquired on 19 August 2021 at 11:15:51 UTC
Sentinel-1 CSAR IW acquired on 31 August 2021 at 11:15:51 UTC
Sentinel-2 MSI acquired on 03 September 2021 at 03:35:41 UTC

Author(s): Sentinel Vision team, VisioTerra, France - svp@visioterra.fr

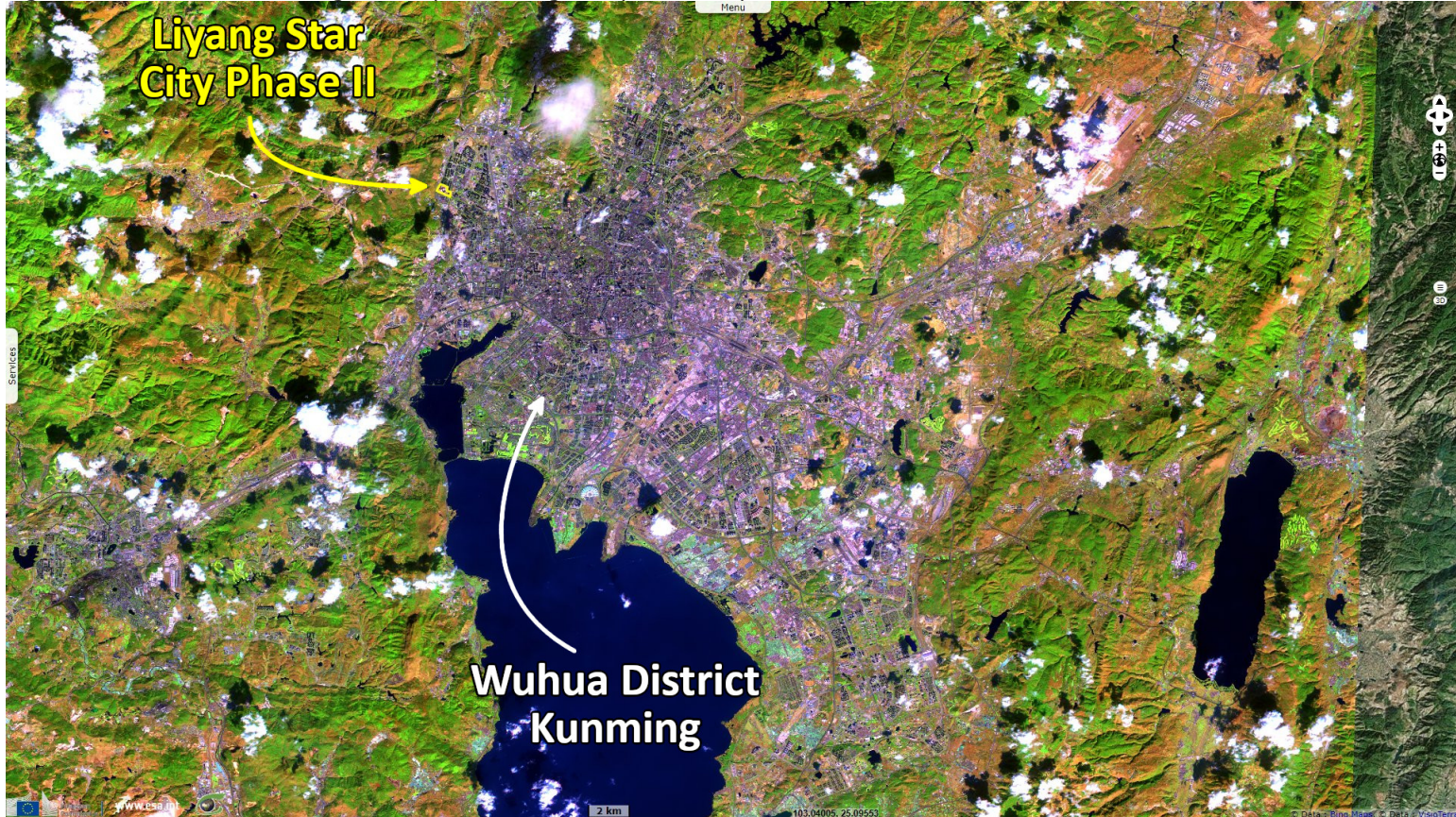
Keyword(s): Land, urban planning, China



[2D Layerstack](#)

Fig. 1 - S2 (21.01.2021) - Kunming is the capital and largest city of Yunnan province, in south-west China.

[2D view](#)



The construction of Liyang Star City Phase II buildings, which began in 2011, did not continue because the construction company ran out of money in 2013.

Fig. 2 - S1 (26.07.2021->19.08.2021 / 31.08.2021->24.09.2021) - These 15 34-floors high towers have been flattened. [2D view](#) [2D view](#) [2D view](#)

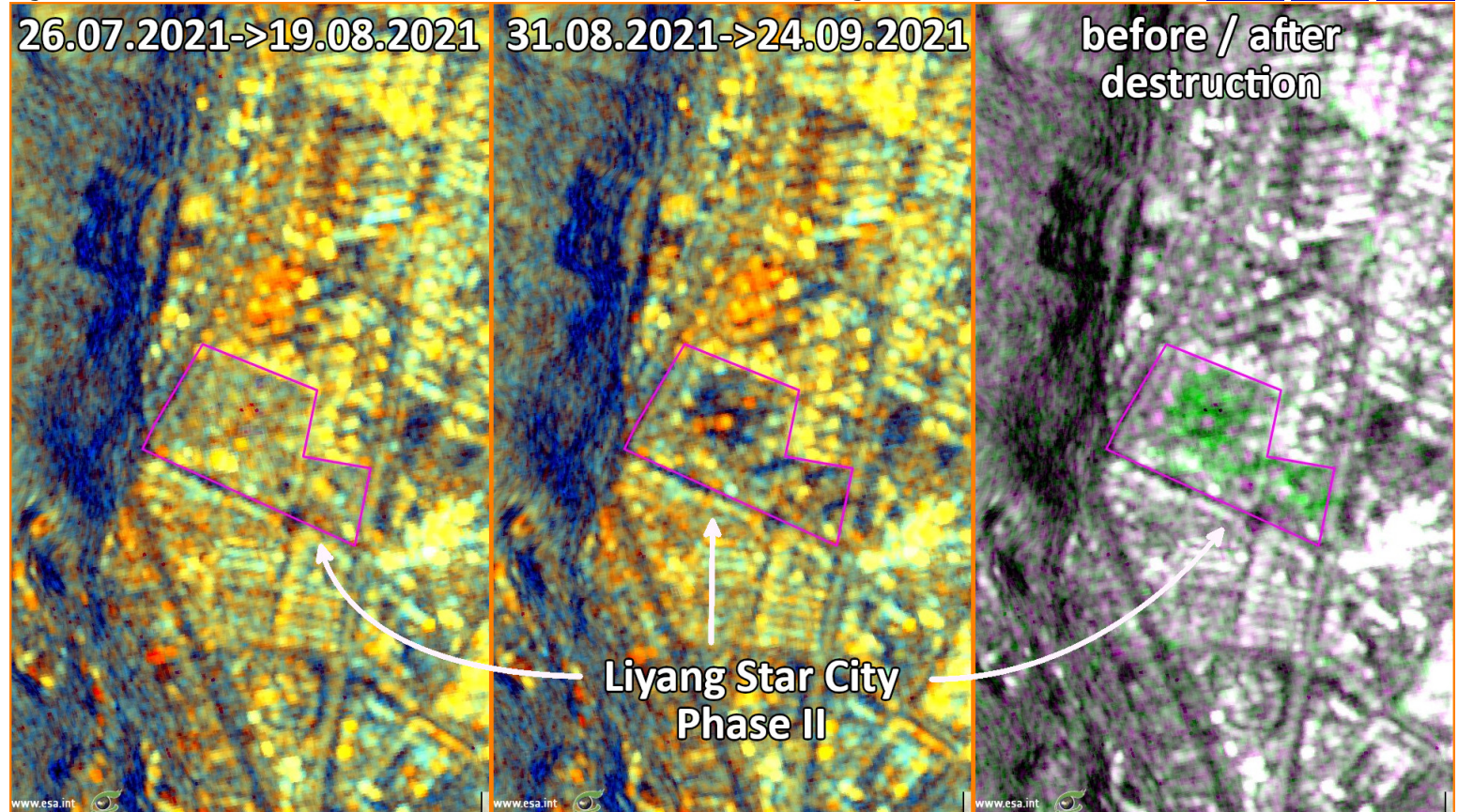
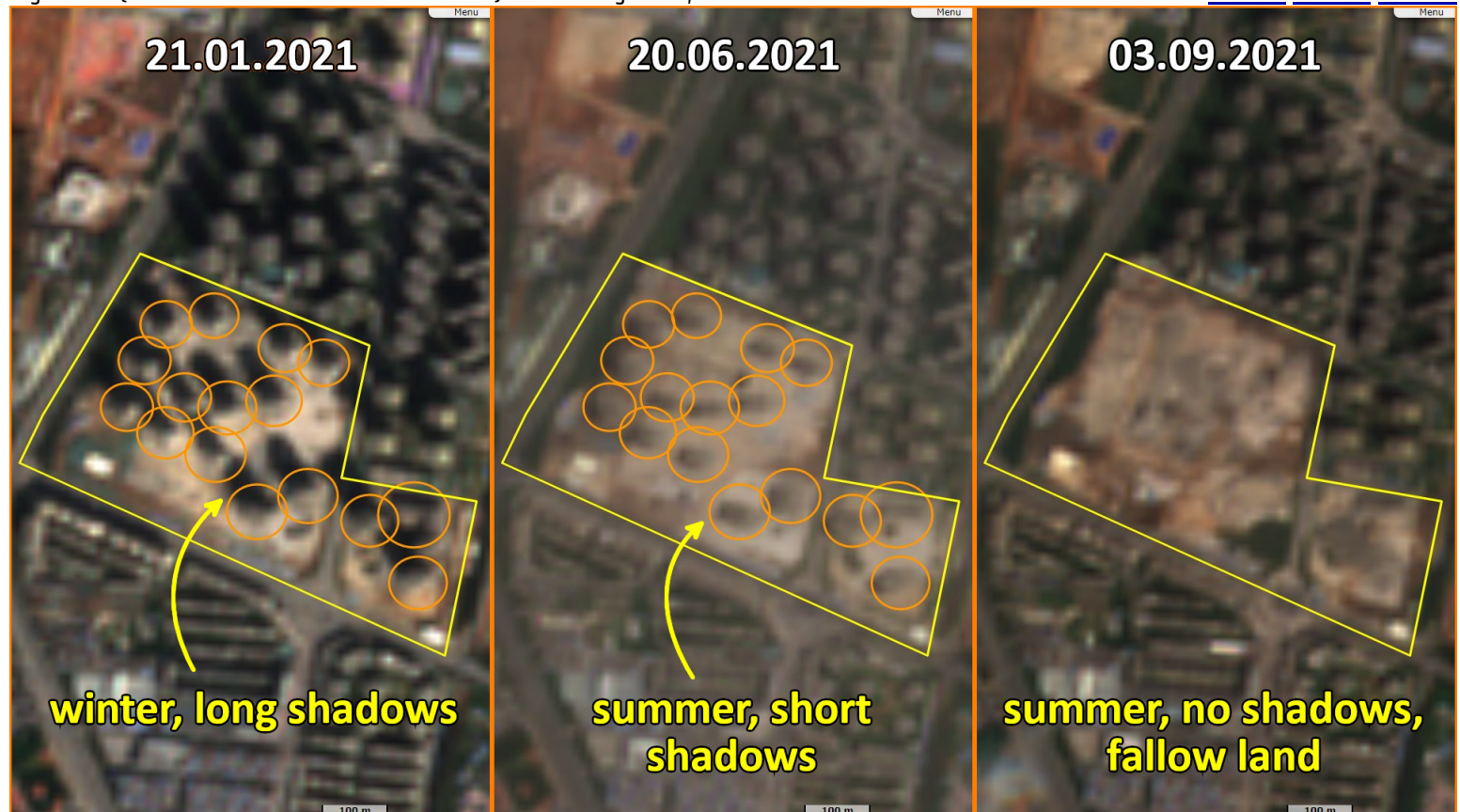


Fig. 3 - S2 (21.01.2021 / 20.06.2021 / 03.09.2021) - On 27 Aug. 2021, it took 45 seconds to reduce the area to fallow land. [2D view](#) [2D view](#) [2D view](#)



*The views expressed herein can in no way be taken to reflect the official opinion of the European Space Agency or the European Union.
Contains modified Copernicus Sentinel data 2022, processed by VisioTerra.*

More on European Commission space:						
More on ESA:				S-1 website	S-2 website	S-3 website
More on Copernicus program:				SciHub portal	Cophub portal	Inthub portal Colhub portal
More on VisioTerra:				Sentinel Vision Portal	Envisat+ERS portal	Swarm+GOCE portal CryoSat portal