

Bridge failure on Genoa highway

Sentinel-1 CSAR IW acquired on 03 August 2018 at 05:26:47 & 17:22:56 UTC

Sentinel-2 MSI acquired on 05 August 2018 at 10:20:19 UTC

Sentinel-1 CSAR IW acquired on 09 August 2018 at 17:22:07 UTC

Sentinel-1 CSAR IW acquired on 15 August 2018 at 05:26:47 & 17:22:57 UTC

Sentinel-2 MSI acquired on 15 August 2018 at 10:20:19 UTC

Author(s): Sentinel Vision team, VisioTerra, France - svp@visioterra.fr

Keyword(s): Emergency, land, urban, road infrastructure, bridge, Italy.



[2D Layerstack](#)

Fig. 1 - S1 (09.08.2018) - vv,vh,ndi(vh,vv) - Italian A10 borders Ligurian Alps & north Apennines, 60% of it is made of viaducts & tunnels. [3D view](#)

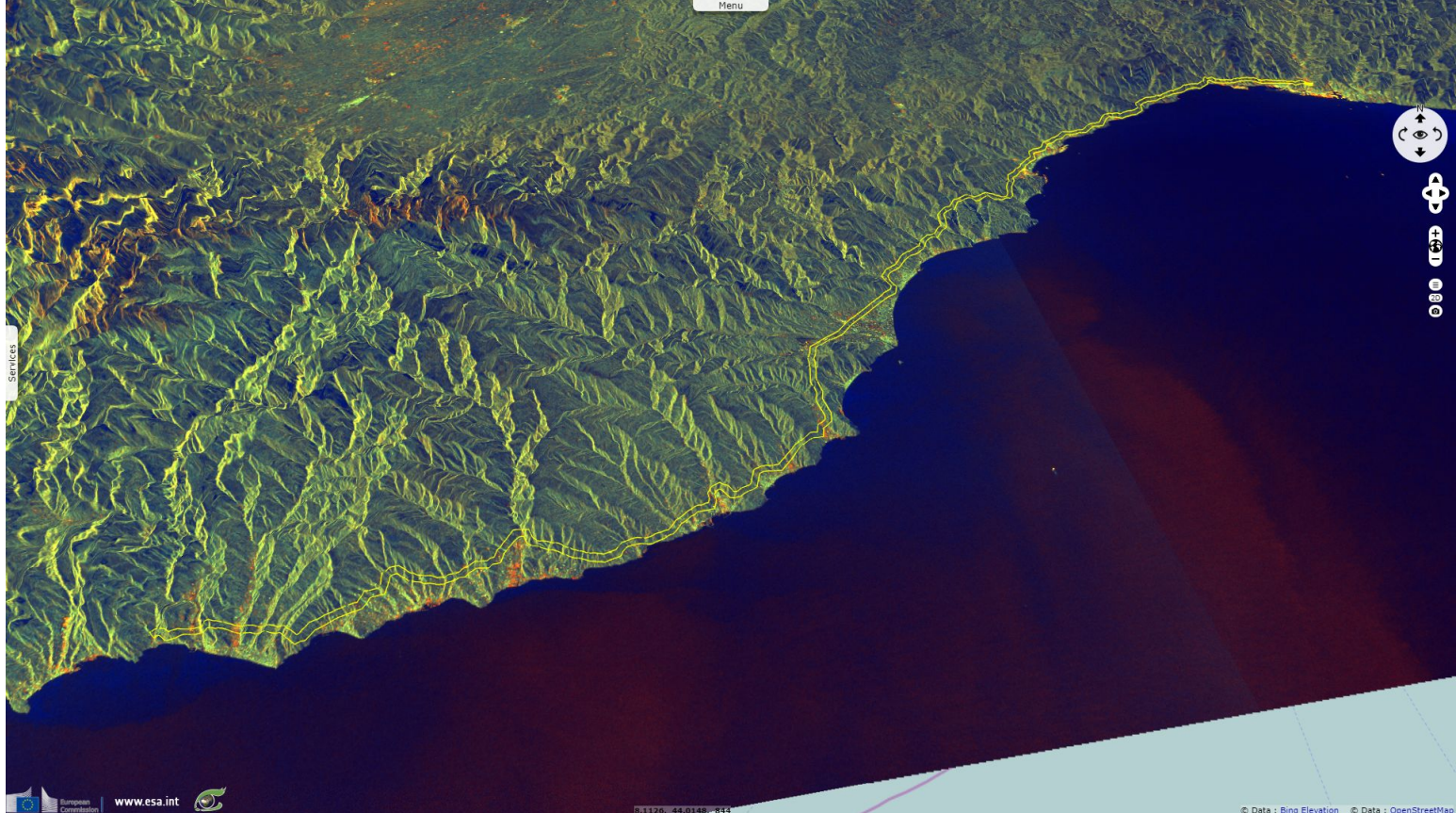


Fig. 2 - S2 (15.08.2018) - 11,8,4 colour composite - At east, it ends in Genoa (visible on the right), 500m after the 1967-built Morandi Bridge [2D view](#)



Fig. 3 - S1 (15.08.2018) - vv,vh,vv colour composite - On 14.08.2018, Morandi bridge collapsed during a powerful storm. [2D animation](#) [2D animation](#)

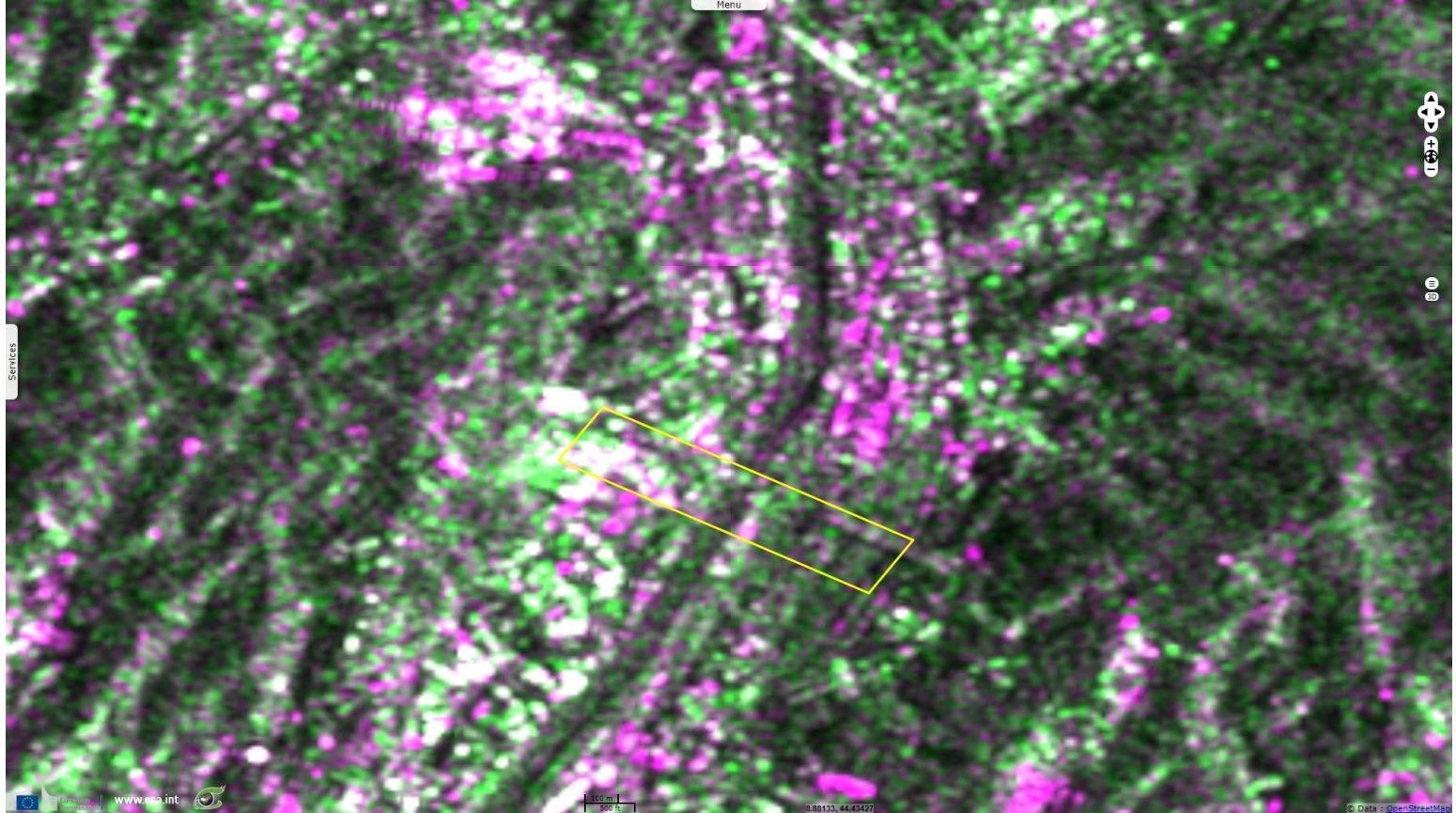


Fig. 4 - 4,3,2 natural colour - It killed at least 38. This would be the 11th bridge collapse in Italy since 2013. [2D animation](#) [2D view](#) [2D view](#)



The views expressed herein can in no way be taken to reflect the official opinion of the European Space Agency or the European Union.

More on European Commission space:								
More on ESA:				S-1 website	S-2 website	S-3 website		
More on Copernicus program:				SciHub portal	CopHub portal	Inthub portal	Colhub portal	
More on VisioTerra:				Sentinel Vision Portal	Envisat+ERS portal	Swarm+GOCE portal	CryoSat portal	Proba-V portal