

Example of progressive deforestation in Gabon

Sentinel-1 CSAR IW acquired on 27 November 2018 at 17:43:33 UTC

...

Sentinel-2 MSI acquired on 05 August 2019 at 09:30:39 UTC

Sentinel-1 CSAR IW acquired on 14 February 2020 at 17:43:37 UTC

Sentinel-2 MSI acquired on 07 March 2021 at 09:30:39 UTC

Author(s): Sentinel Vision team, VisioTerra, France - svp@visioterra.fr

Keyword(s): Land, forestry, deforestation, biodiversity, rainforest, agriculture, Gabon

[2D Layerstack](#)

Fig. 1 - S2 (07.03.2021) - While it remains more preserved than its neighbours of both legal and illegal clearcutting, Gabon is also affected. [2D view](#)



Fig. 2 - S1 (27.11-23.12.2018) - From early 2016 to end 2018, this area near Akok only encompassed a road through the forest. [2D animation](#) [2D view](#)

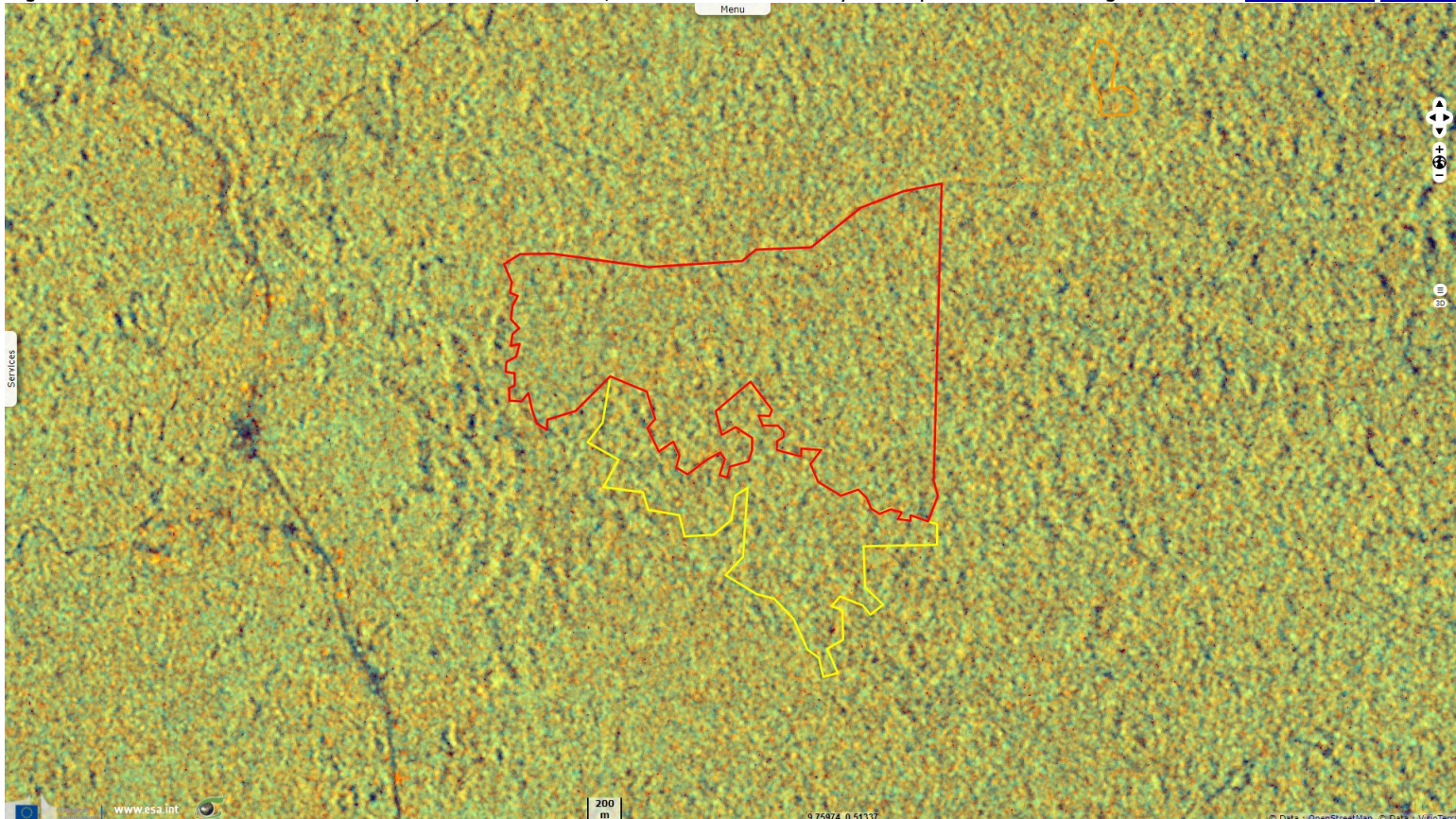


Fig. 3 - S2 (17.04.2019) - A deforestation started to happen south of the road.

[2D view](#)

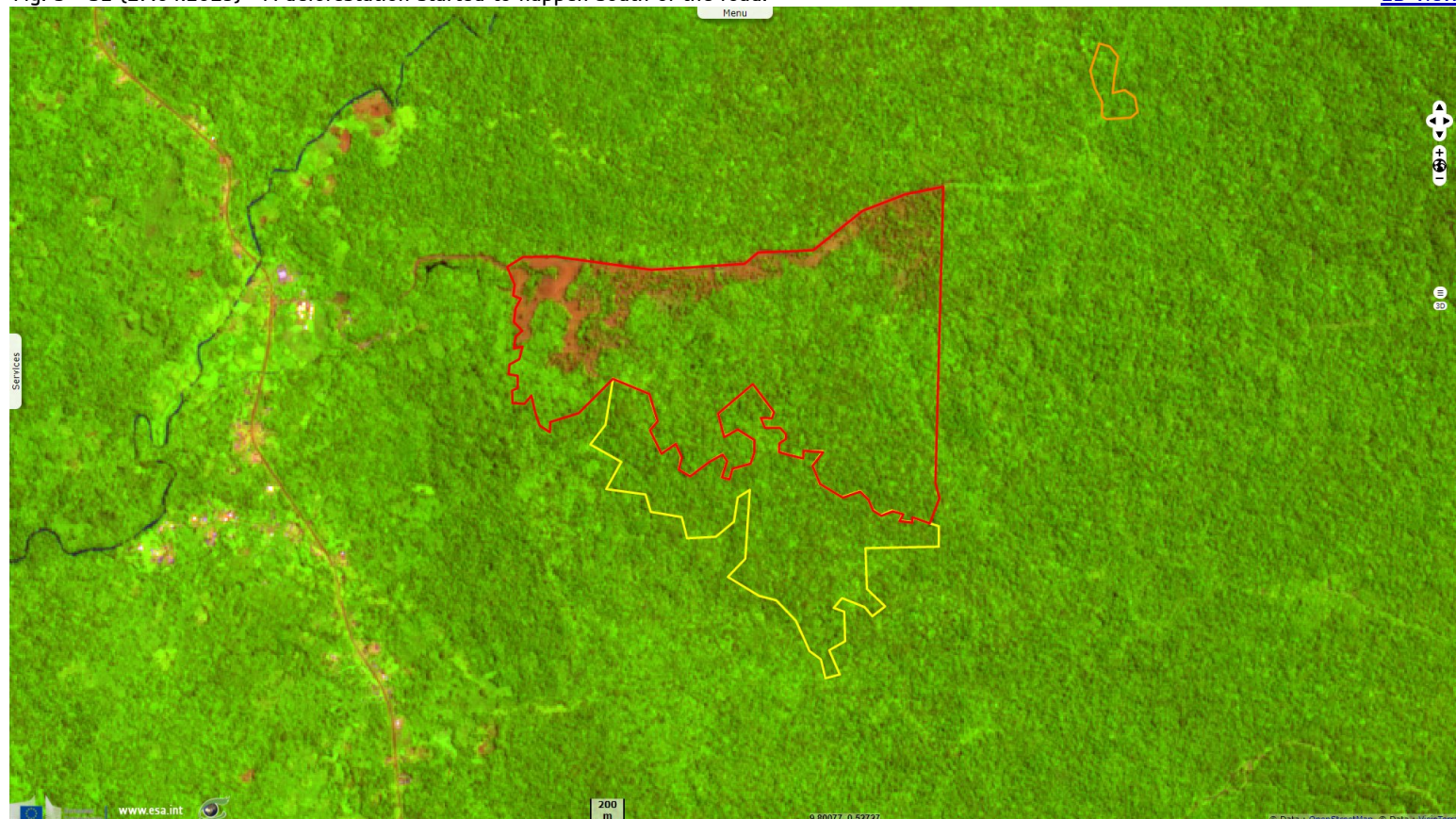


Fig. 4 - S2 (05.08.2019) - 8 months after the first image, clearcutting increased near the road while partial deforestation was visible further south. [2D animation](#) [2D view](#)

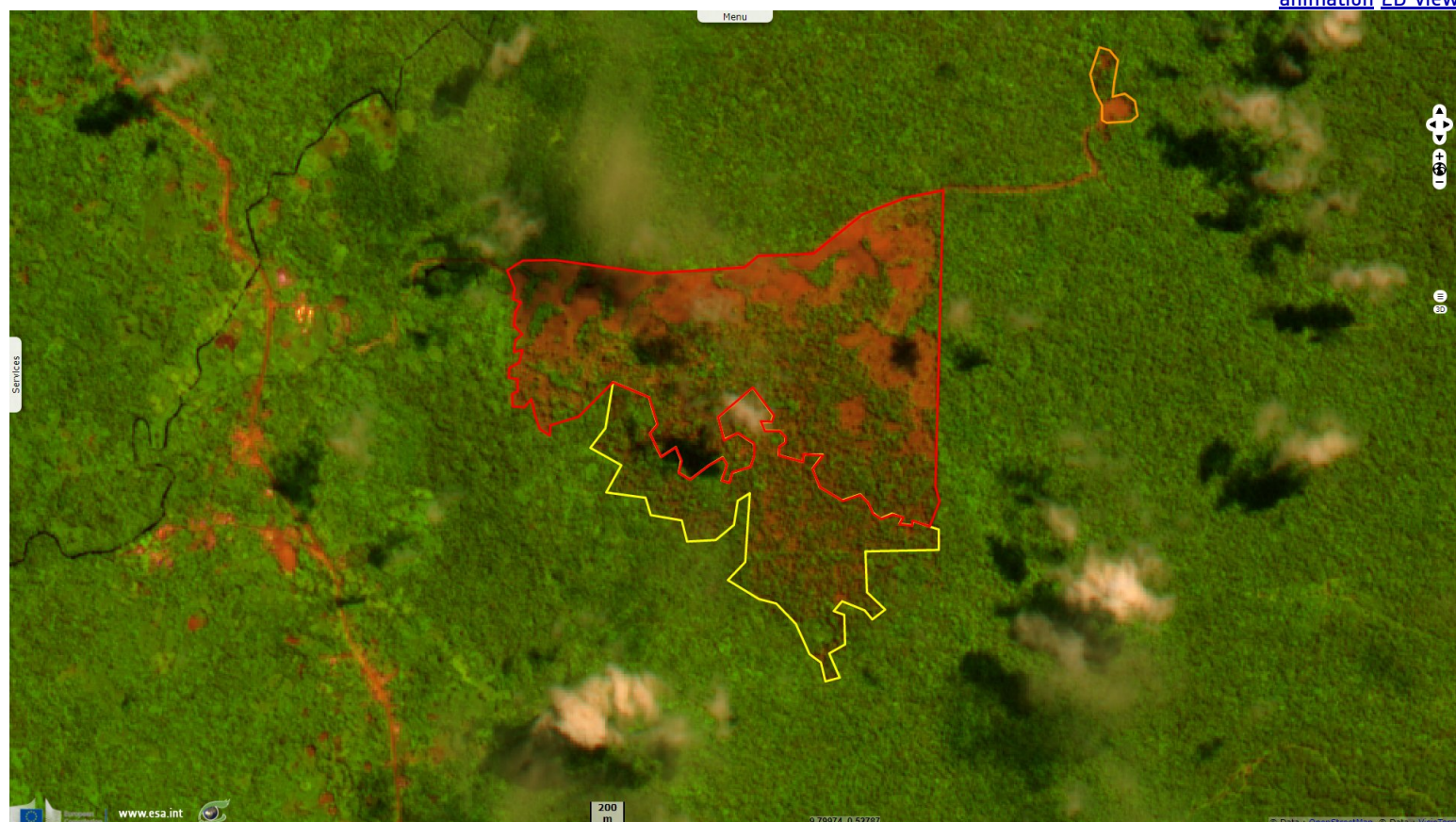


Fig. 5 - S1 (14.02.2020-23.03.2020) - Several square kilometres had been deforested by March 2020.

[2D animation](#) [2D view](#)

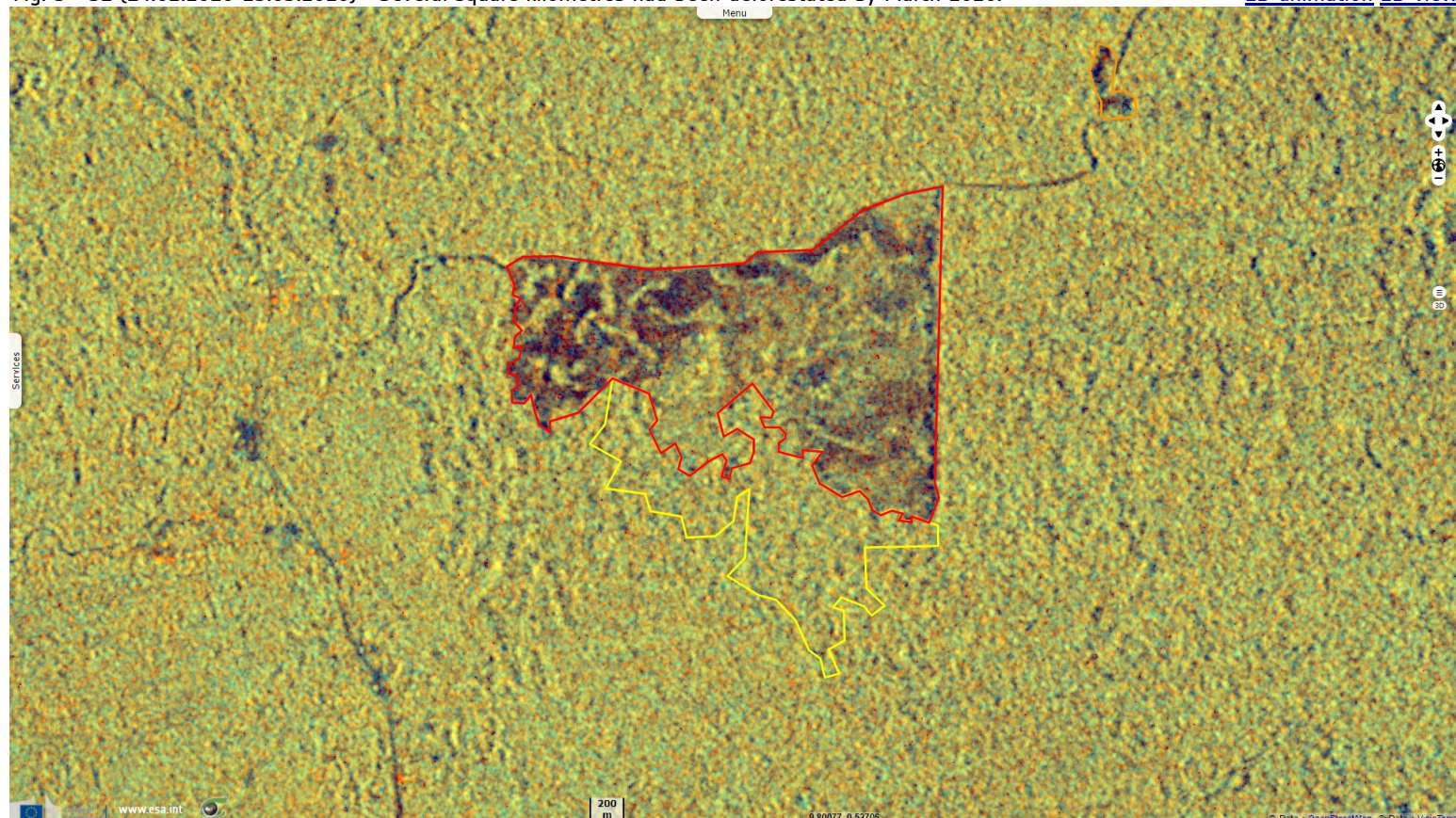
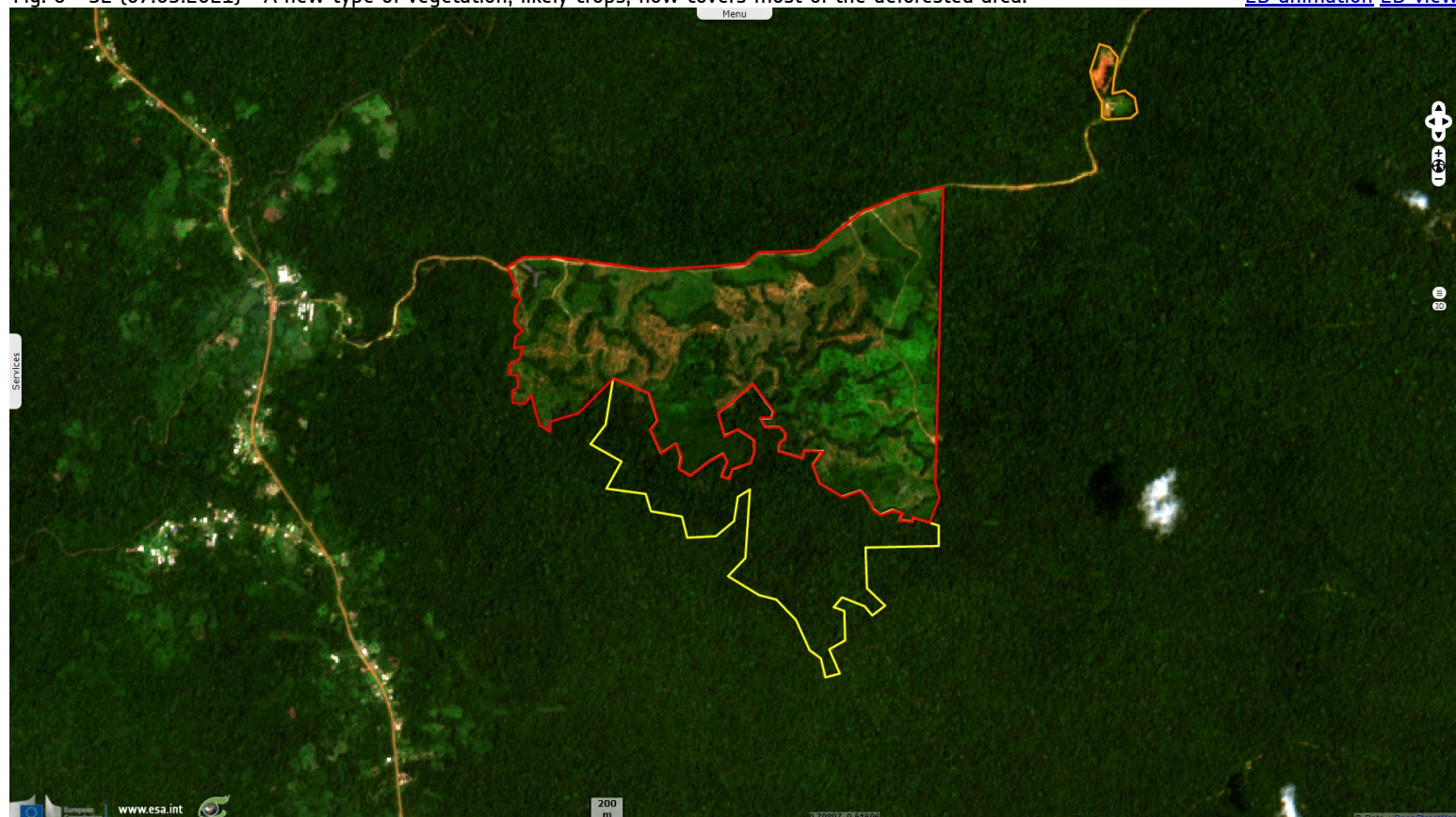














Fig. 6 - S2 (07.03.2021) - A new type of vegetation, likely crops, now covers most of the deforested area.

[2D animation](#) [2D view](#)



*The views expressed herein can in no way be taken to reflect the official opinion of the European Space Agency or the European Union.
Contains modified Copernicus Sentinel data 2021, processed by VisioTerra.*

More on European Commission space:							
More on ESA:				S-1 website	S-2 website	S-3 website	
More on Copernicus program:				Scihub portal	Cophub portal	Inthub portal	Colhub portal
More on VisioTerra:				Sentinel Vision Portal	Envisat+ERS portal	Swarm+GOCE portal	CryoSat portal