

Islandception in Philippines

Sentinel-1 CSAR IW acquired on **02 January 2019** at 21:45:29 UTC
Sentinel-1 CSAR IW acquired on **02 January 2019** at 21:45:58 UTC
Sentinel-1 CSAR IW acquired on **02 January 2019** at 21:46:23 UTC
Sentinel-1 CSAR IW acquired on **02 January 2019** at 21:46:48 UTC

Author(s): Sentinel Vision team, VisioTerra, France - svp@visioterra.fr

Keyword(s): Island, volcano, archipelago, lake, geohazard, Philippines, South China Sea, Philippine Sea

[2D Layerstack](#)

Fig. 1 - S1 (02.01.2019) - vv,vh,ndi(vh,vv) colour composite - Vulcan Point in Yellow Lake.

[2D view](#)

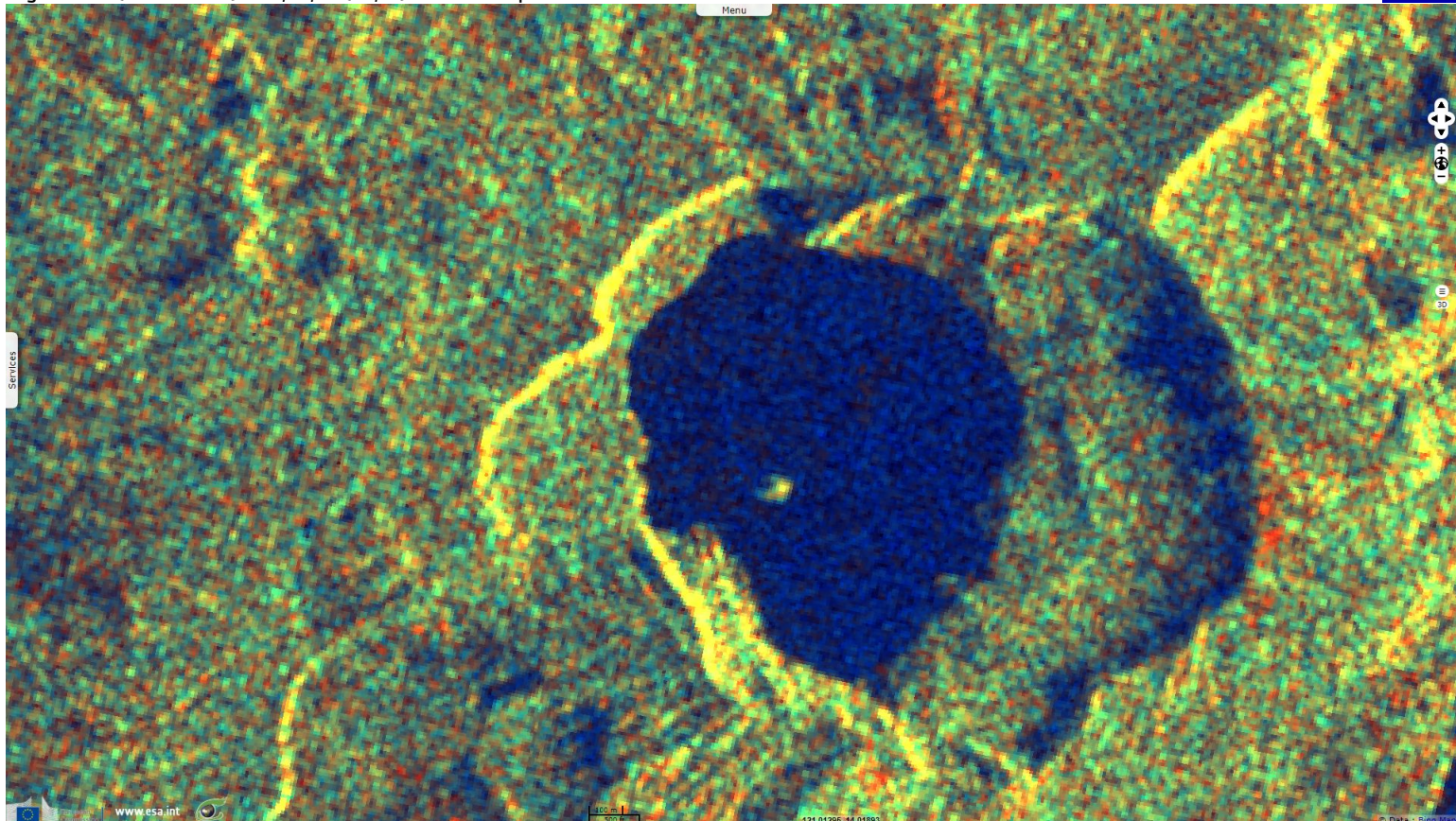


Fig. 2 - Fishing boats around Volcano Island in Lake Taal; this decade volcano is responsible for the lake's sulfuric content.

[3D view](#)

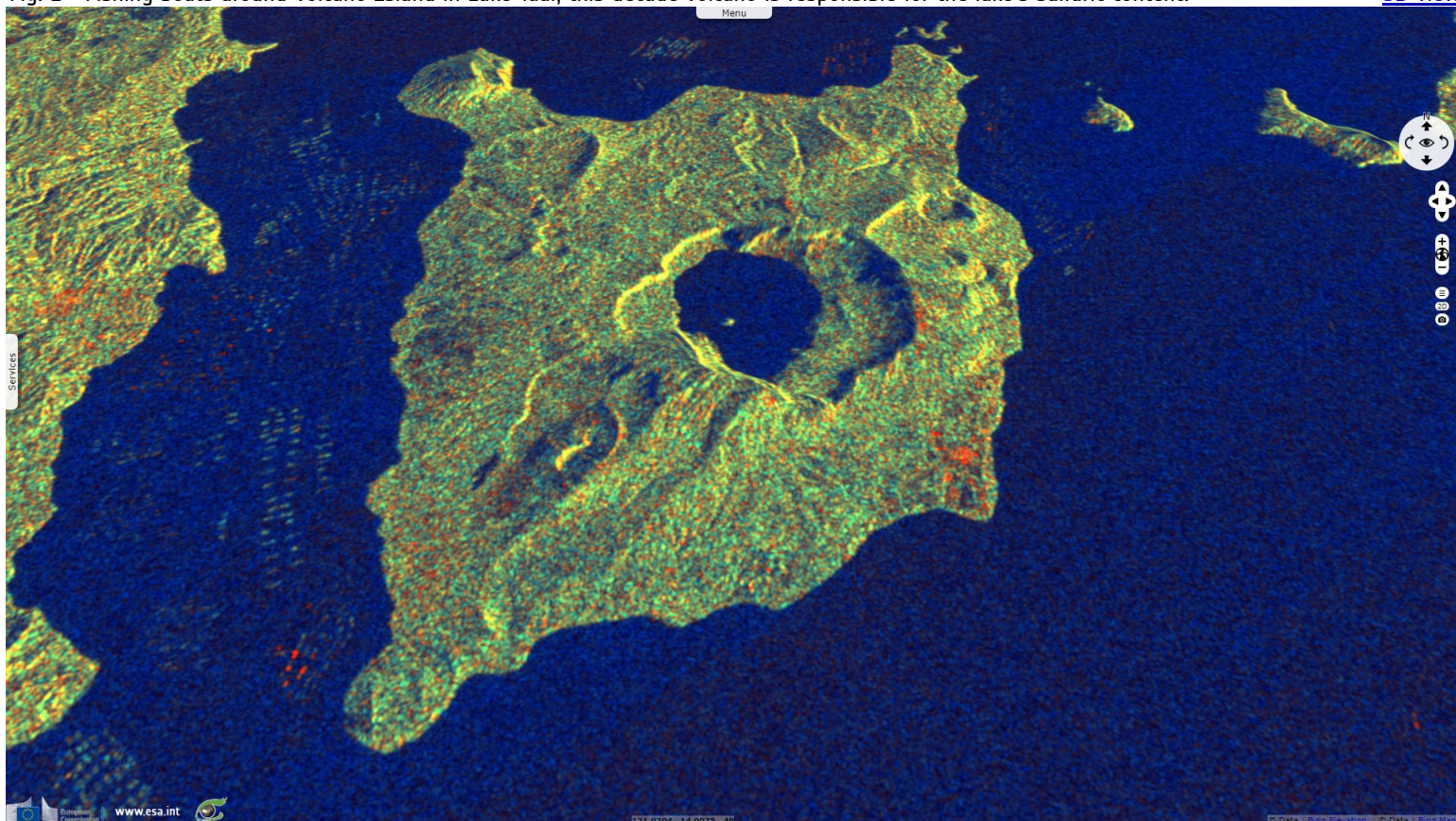
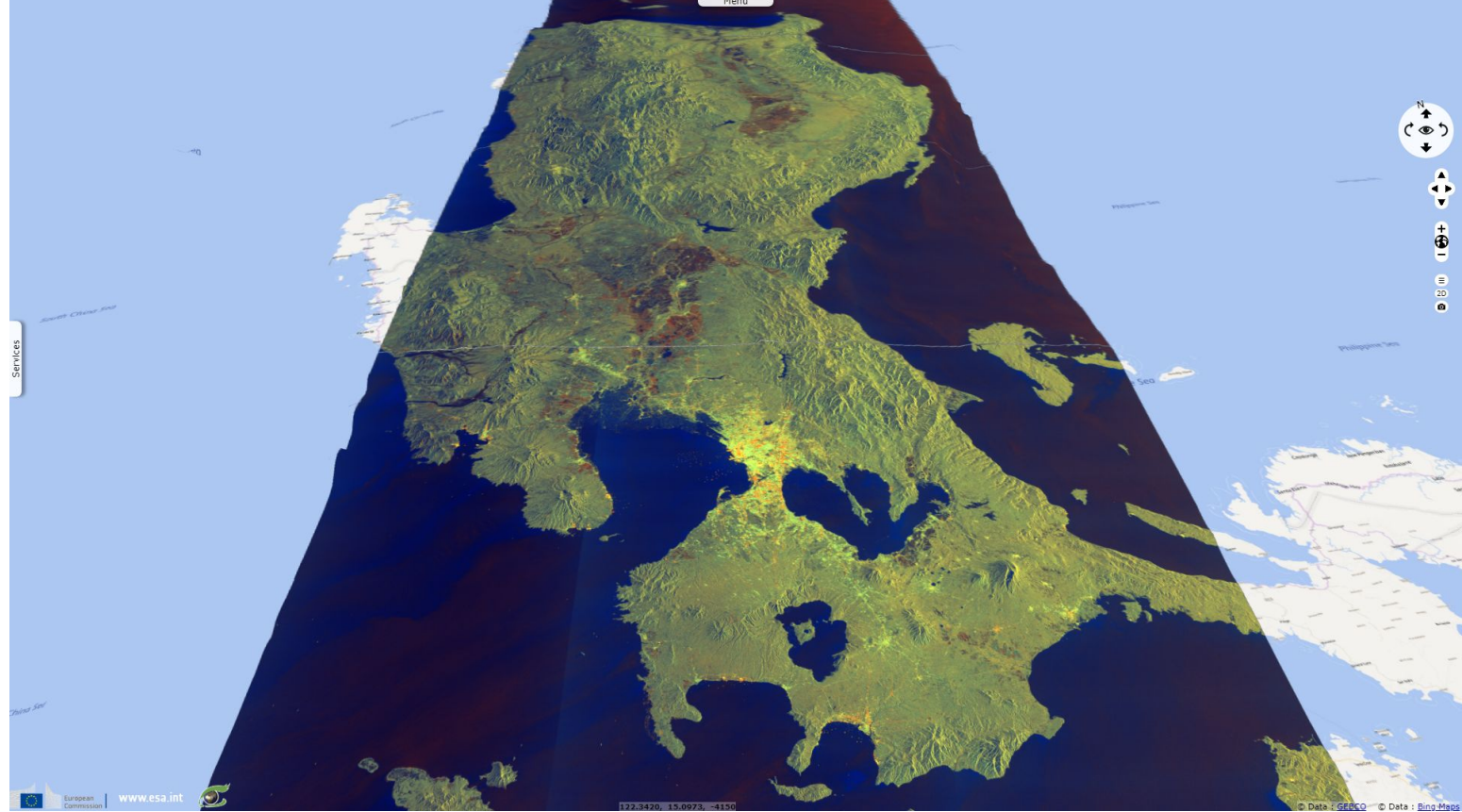


Fig. 3 - Lake Taal in Luzon island; it is a large volcanic caldera formed by very large eruptions between 500 000 and 100 000 years ago. [3D view](#)



Fig. 4 - Luzon island between South China Sea (aka Luzon Sea, west) and Philippine Sea (east) is the World's 4th most populous island. [3D view](#)



The views expressed herein can in no way be taken to reflect the official opinion of the European Space Agency or the European Union.

More on European Commission space:						
More on ESA:				S-1 website	S-2 website	S-3 website
More on Copernicus program:				SciHub portal	Cophub portal	Inthub portal Colhub portal
More on VisioTerra:				Sentinel Vision Portal	Envisat+ERS portal	Swarm+GOCE portal CryoSat portal Proba-V portal