

Easter snowstorm in Iceland

Sentinel-1 CSAR IW acquired on 26 March 2021

Sentinel-1 CSAR IW acquired on 07 April 2021

Author(s): Sentinel Vision team, VisioTerra, France - svp@visioterra.fr

Keyword(s): Polar, cryosphere, atmosphere, snow, precipitations, ice, Iceland.

Fig. 1 - S1 (26.03.2021) - A large part of Iceland was still blanketed in ice by early April but it was retreating.

[3D View](#)

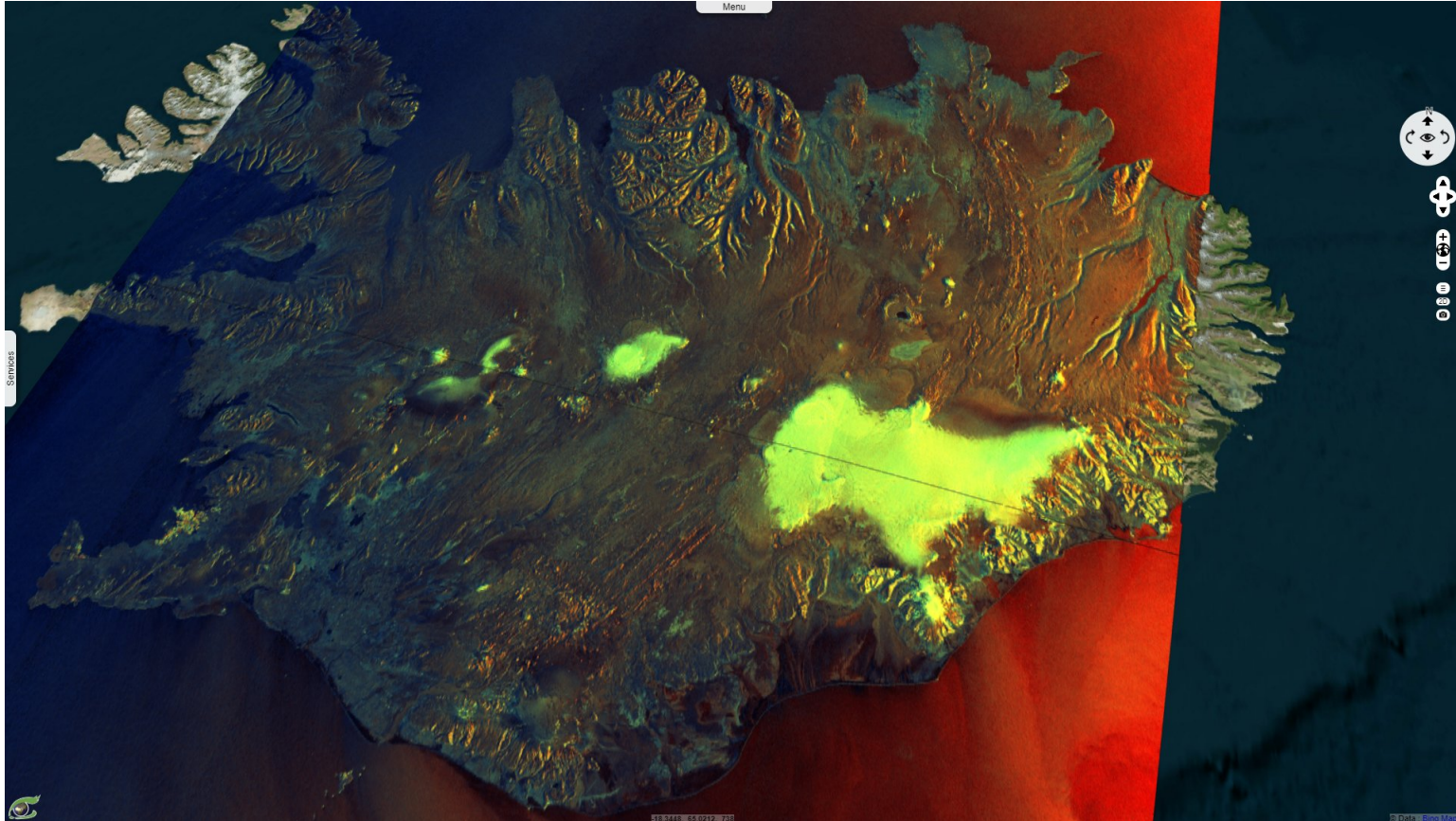
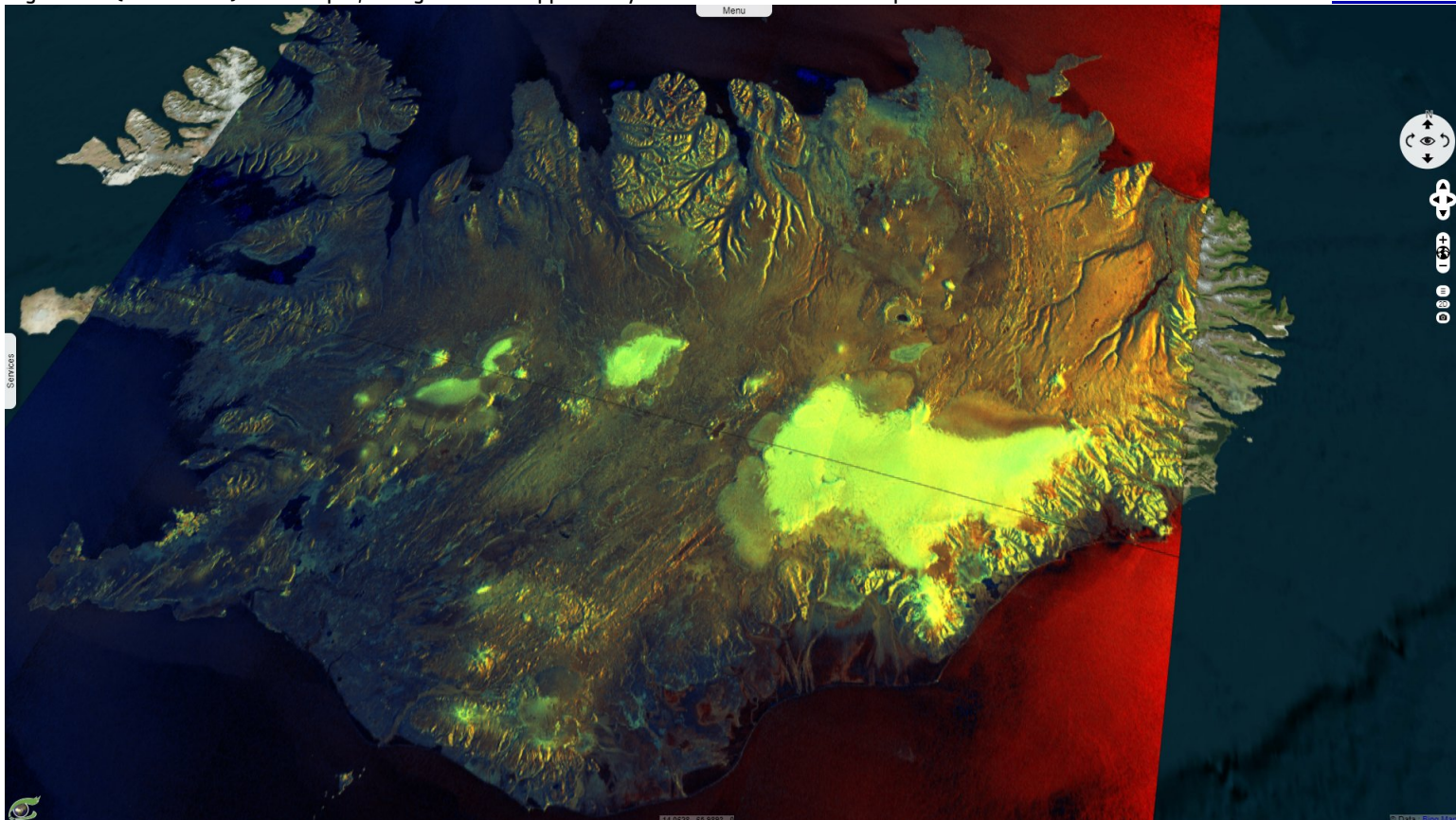


Fig. 2 - S1 (07.04.2021) - On 4 April, a large storm dropped a layer of snow. The fall in temperatures also turned some snow to ice.

[3D Animation](#)



Further south-east, days after historic warmth, temperatures plummeted 20 degrees or more as this shocking blast of cold reached Europe.

Fig. 3 - S1 (07.04.2021) - In proportion, the smaller icefields and glaciers were the first to benefit from the snow precipitations.

[3D Animation](#)

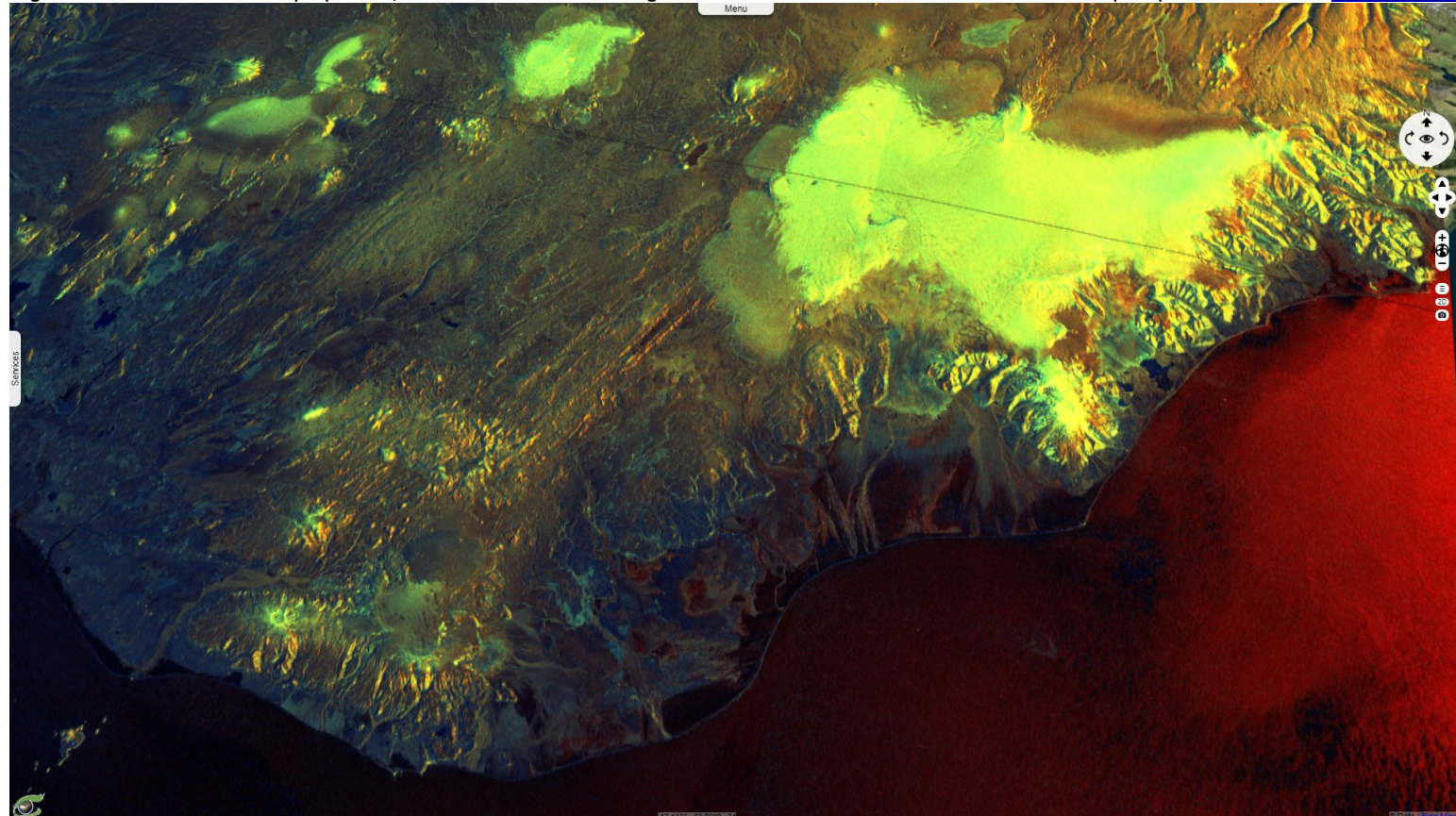
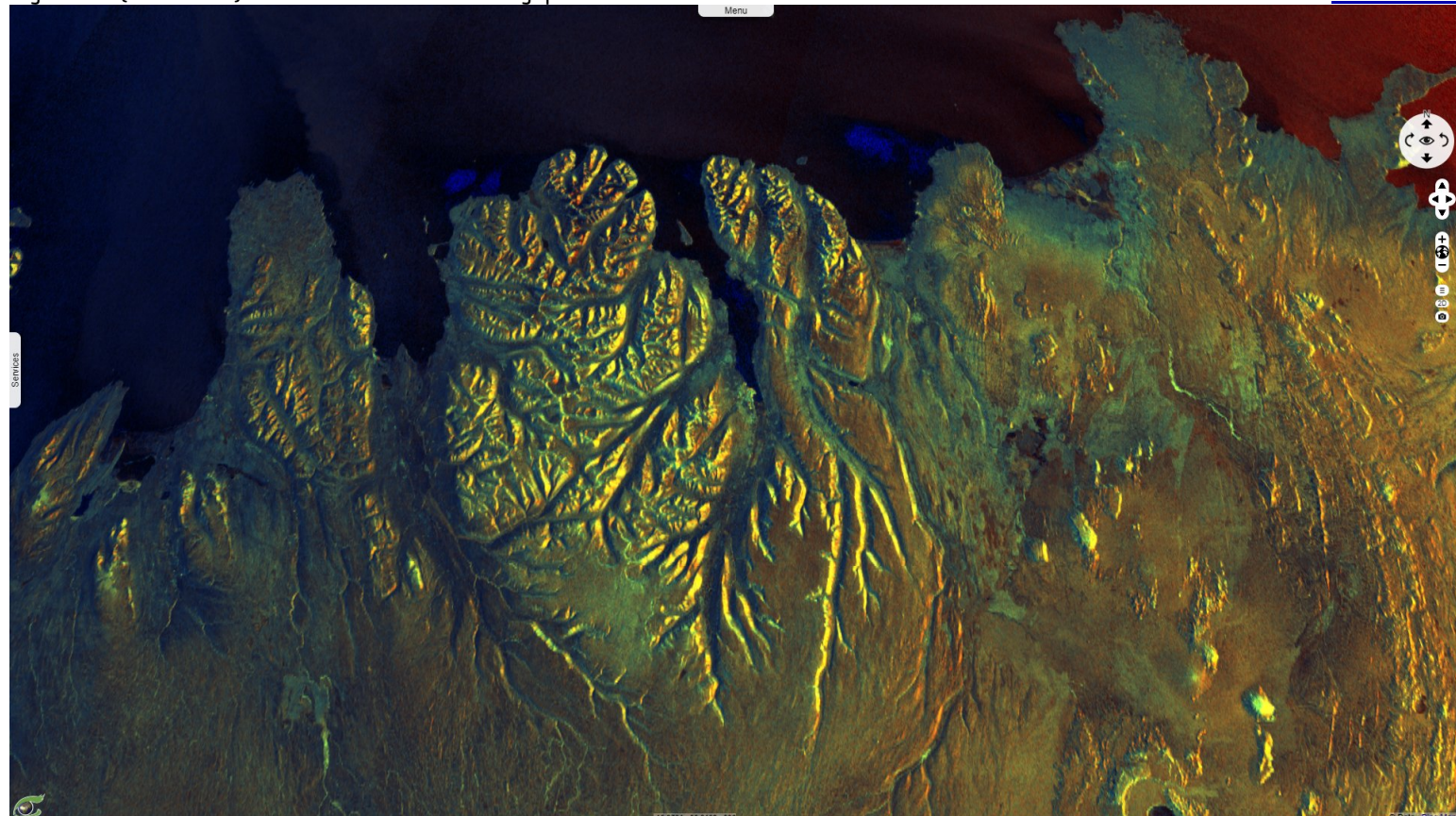








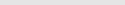





Fig. 4 - S1 (07.04.2021) - The mountainous Tröllaskagi peninsula took the blunt of the storm.

[3D Animation](#)



*The views expressed herein can in no way be taken to reflect the official opinion of the European Space Agency or the European Union.
Contains modified Copernicus Sentinel data 2021, processed by VisioTerra.*

More on European Commission space:						
More on ESA:				S-1 website	S-2 website	S-3 website
More on Copernicus program:				SciHub portal	Cophub portal	Inthub portal
More on VisioTerra:				Sentinel Vision Portal	Envisat+ERS portal	Swarm+GOCE portal
				CryoSat portal		