

The Chinese paddlefish, first specie extinct in 2020

Sentinel-3 SLSTR RBT acquired on **29 April 2017** at 02:20:07 UTC
Sentinel-3 OLCI FR & SLSTR RBT acquired on **13 May 2017** from 02:54:31 to 02:57:31 UTC
Sentinel-3 OLCI FR acquired on **23 July 2017** at 02:16:23 UTC
Sentinel-2 MSI acquired on **17 December 2018** at 03:21:29 UTC

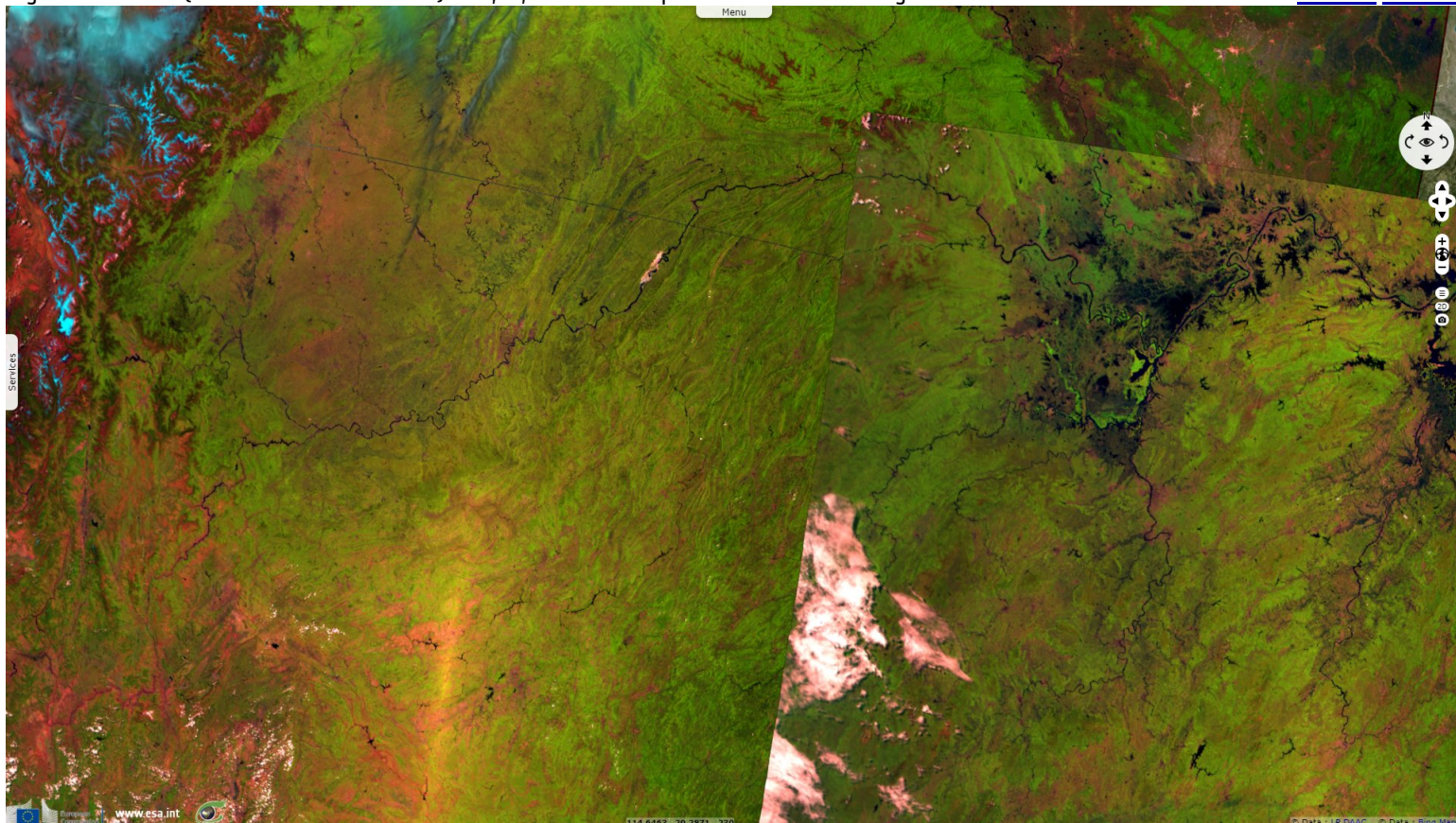
Author(s): Sentinel Vision team, VisioTerra, France - svp@visioterra.fr

Keyword(s): River, biodiversity, dam, overfishing, China

[3D Layerstack](#)

Fig. 1 - S3 SLSTR (29.04.2017 & 13.05.2017) - S5,S3,S2 colour composite - View of the Yangtse river basin.

[2D view](#) [3D view](#)



The Chinese paddlefish was a 3m long freshwater fish that lived in Yangtze & Yellow river basins, it was last seen alive in 2003.

Fig. 2 - S3 OLCI (13.05.2017 & 23.07.2017) - 10,6,3 natural colour - Zoom on the higher Yangtze. It had been functionally extinct since 1993. [3D view](#)

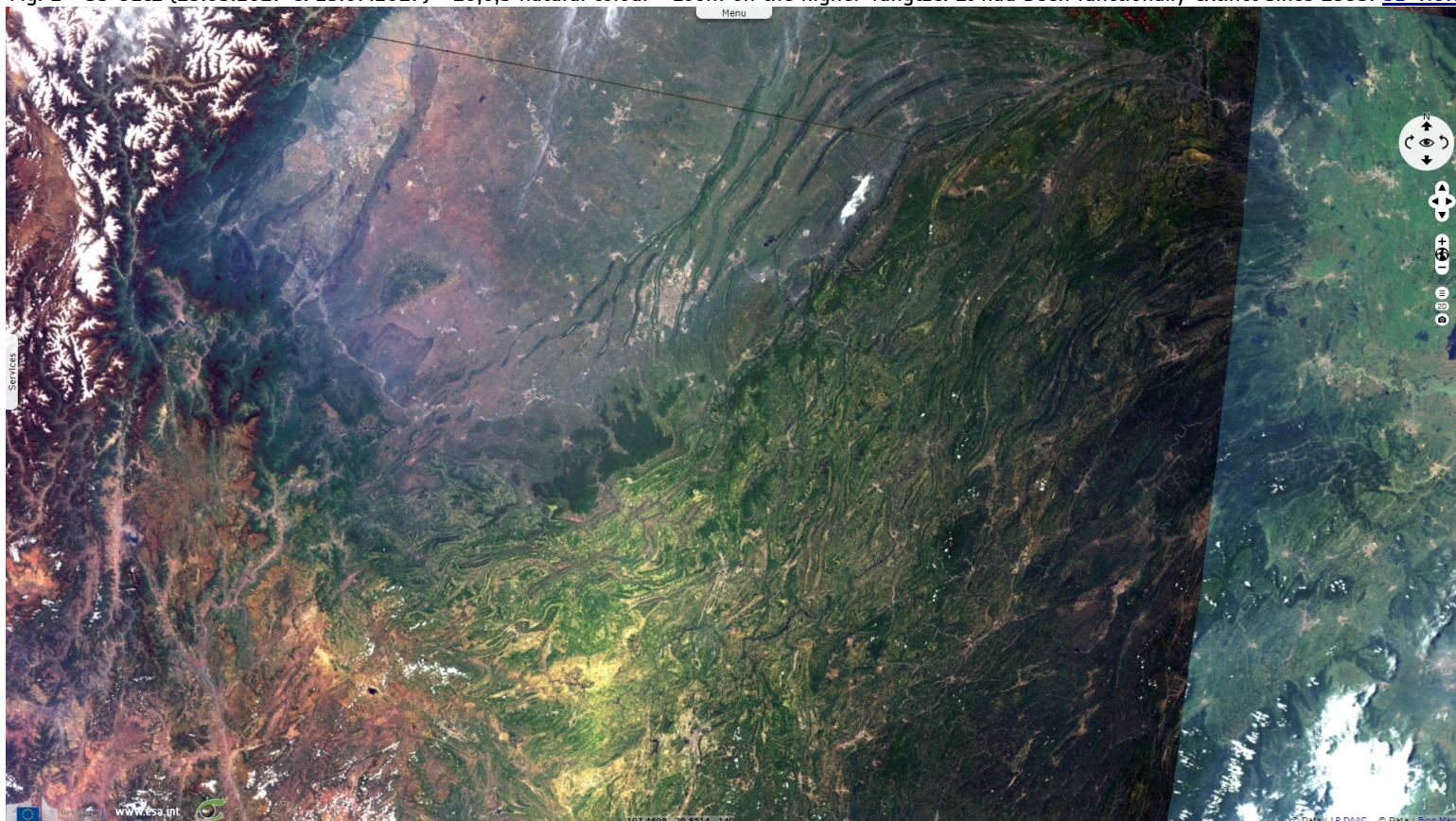


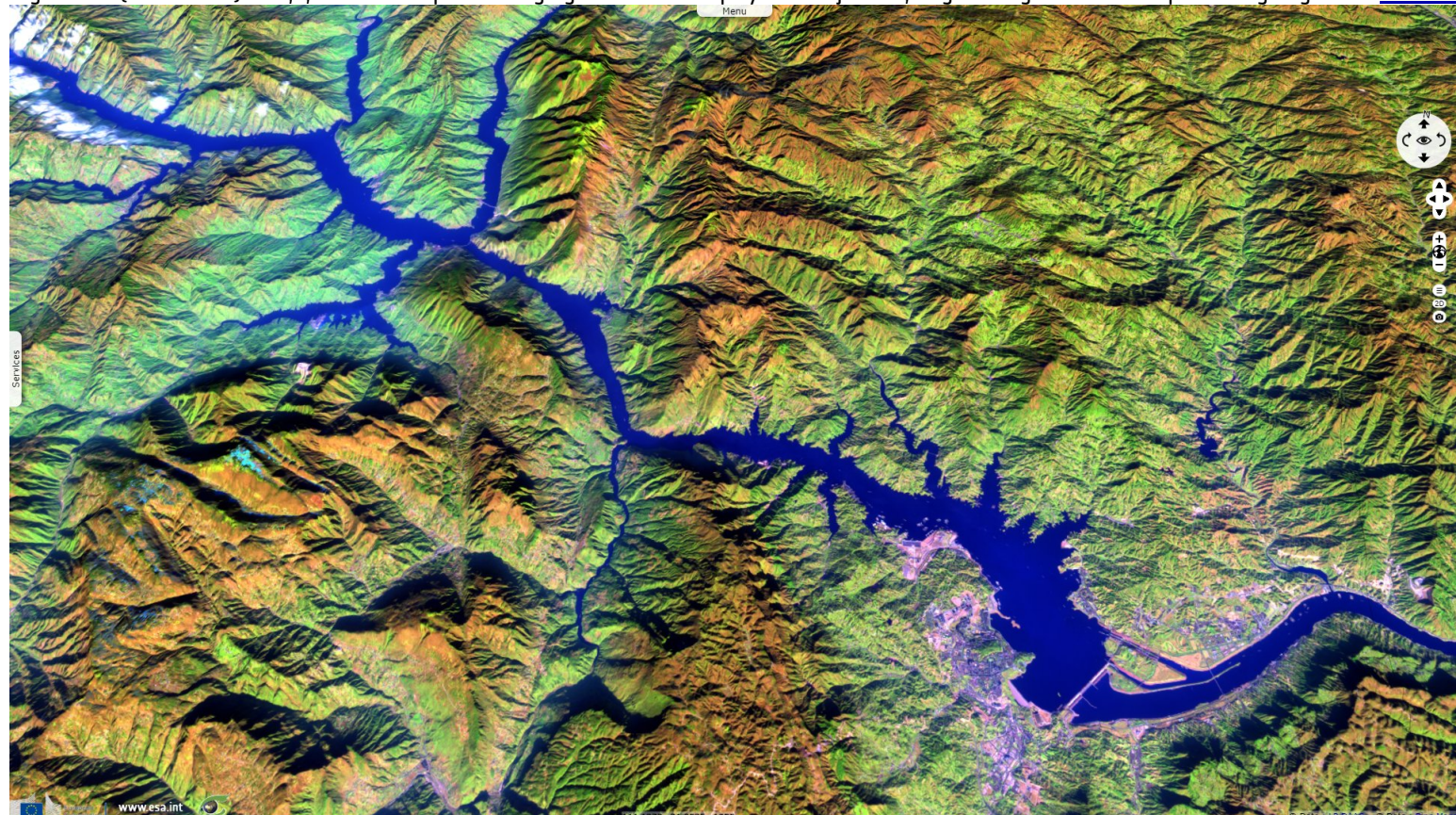
Fig. 3 - S2 (17.12.2018) - 4,3,2 natural colour - Gezhouba dam. It is now officially considered extinct, the first species in 2020.

[3D view](#)



Fig. 4 - S2 (17.12.2018) - 11,8,2 colour composite - 3 gorges dam. Dams played a major role, fragmenting its habitat & preventing migration

[3D view](#)



*The views expressed herein can in no way be taken to reflect the official opinion of the European Space Agency or the European Union.
Contains modified Copernicus Sentinel data 2019, processed by VisioTerra.*

More on European Commission space:						
More on ESA:				S-1 website	S-2 website	S-3 website
More on Copernicus program:				SciHub portal	Cophub portal	Inthub portal
More on VisioTerra:				Sentinel Vision Portal	Envisat+ERS portal	Swarm+GOCE portal
					CryoSat portal	