

Lasting flood in Nhialdiu, Sudd wetland, South Sudan

Sentinel-2 MSI acquired on 06 December 2021 at 08:23:31 UTC
Sentinel-1 CSAR IW acquired on 10 December 2021 at 03:50:41 UTC

...
Sentinel-2 MSI acquired on 02 October 2022 at 08:17:51 UTC
Sentinel-1 CSAR IW acquired on 06 October 2022 at 03:50:48 UTC

Author(s): Sentinel Vision team, VisioTerra, France - svp@visioterra.fr

Keyword(s): Emergency, hydrology, wetland, river, swamp, Nile, South Sudan



[2D Layerstack](#)

Fig. 1 - S1 (10.12.2021-03.01.2021 / 04.03.2022-28.03.2022) - The marshland of Sudd is located at north of South Sudan.

[3D view](#) [3D view](#)

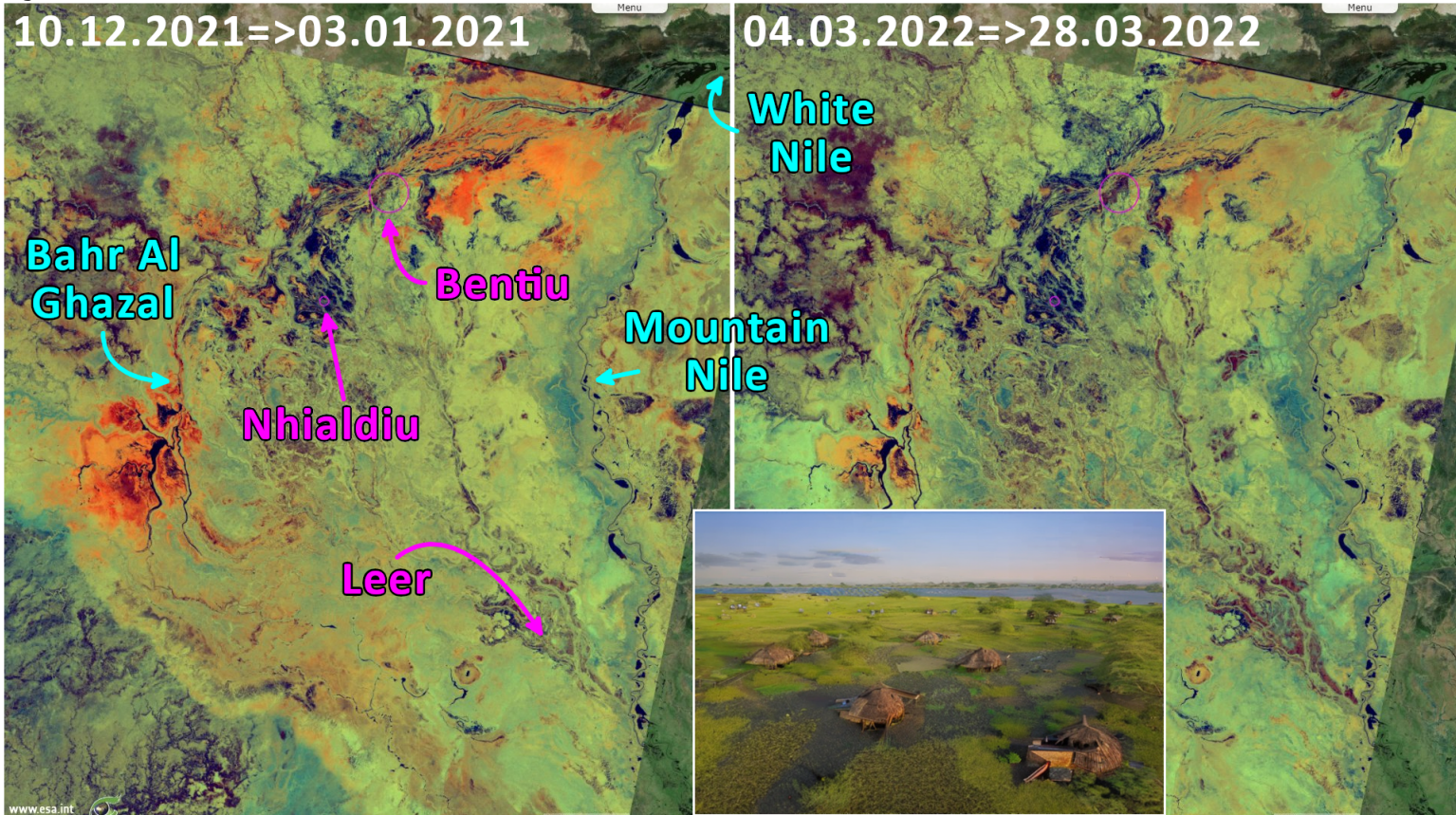
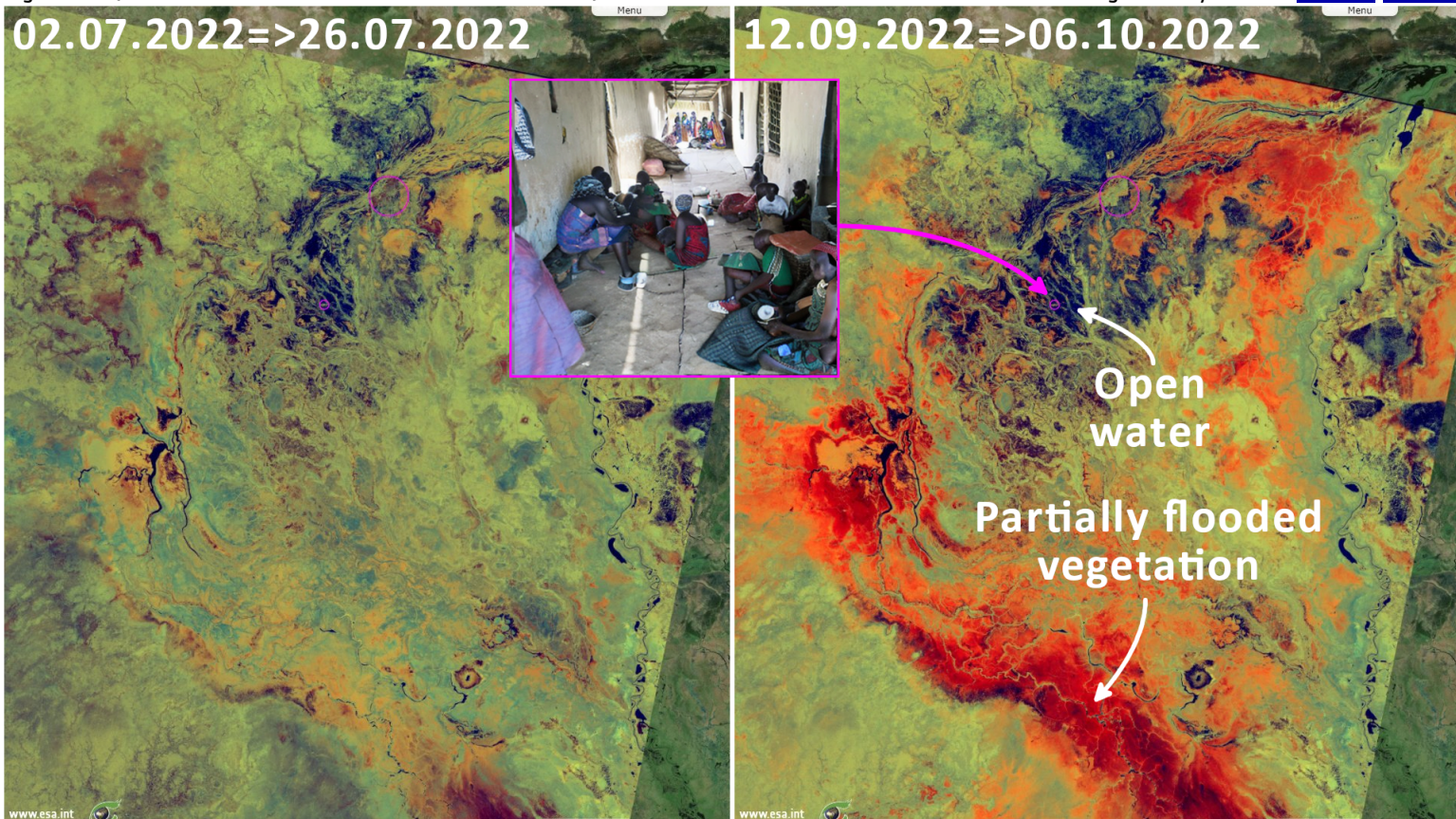


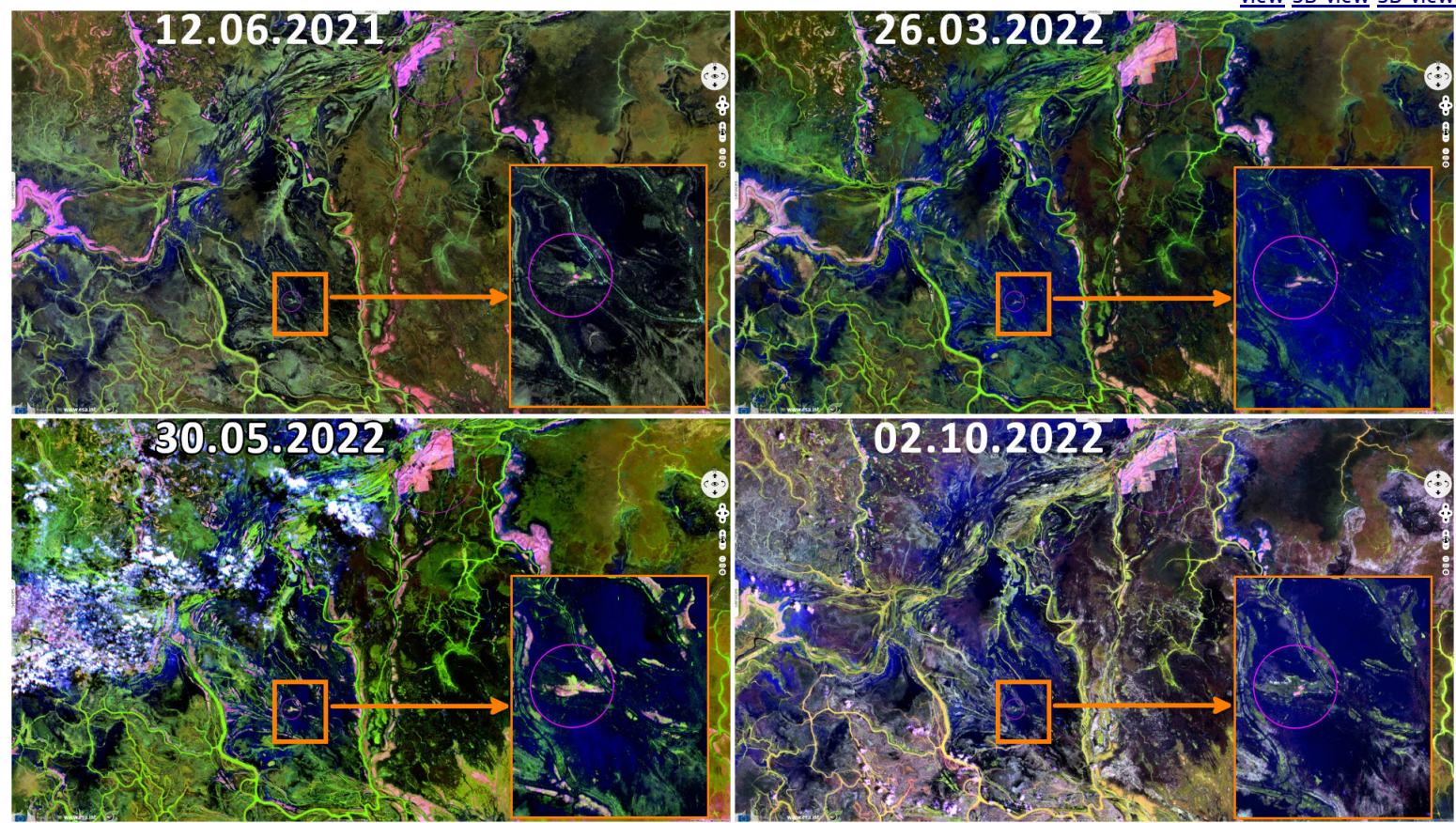
Fig. 2 - S1 (02.07.2022-26.07.2022 / 12.09.2022-06.10.2022) - Excess rainfall has caused recurrent flood in the region this year.

[3D view](#) [3D view](#)















Nhialdiu has experienced excessive rainfall leading to floods, loss of properties and displacement. According to RRC over 7000 people are displaced and currently sheltering in schools, hospital and government offices.

Fig. 3 - S2 (12.06.2021 / 26.03.2022 / 30.05.2022 / 02.10.2022) - Nhialdiu refugee camp & MSF mission have been periodically flooded. [3D view](#) [3D view](#) [3D view](#) [3D view](#)



According to local authorities, affected population and team observation shelters are submerged and crops have been destroyed as a result of floods. Similarly, thousands of herds of cattle have been expatriated to Bentiu, Rubkona and Dhorbour. As a result of flood and heavy downpour many are left without food, clean drinking water and shelters. The health workers stated that, cases of Malaria and diarrhea are on rise, with only one primary health care center operational in Nhialdiu.

*The views expressed herein can in no way be taken to reflect the official opinion of the European Space Agency or the European Union.
Contains modified Copernicus Sentinel data 2022, processed by VisioTerra.*

More on European Commission space:							
More on ESA:				S-1 website	S-2 website	S-3 website	
More on Copernicus program:				Scihub portal	Cophub portal	Inthub portal	Colhub portal
More on VisioTerra:				Sentinel Vision Portal	Envisat+ERS portal	Swarm+GOCE portal	CryoSat portal