

Grounded planes in Singapore closed hub airport

Sentinel-2 MSI acquired on 02 March 2019 at 03:16:41 UTC
Sentinel-1 CSAR IW acquired on 25 March 2019 at 11:25:14 UTC
Sentinel-2 MSI acquired on 31 March 2020 at 03:15:39 UTC
Sentinel-1 CSAR IW acquired on 31 March 2020 at 11:25:20 UTC

Author(s): Sentinel Vision team, VisioTerra, France - svp@visioterra.fr

Keyword(s): Marine trafic, ship, plane, infrastructure, health, airport, port, transport, Singapore, Strait of Malacca



[2D Layerstack](#)

Fig. 1 - S1 (25.03.2019) - vv,vh,vv colour composite - Lying at a strategic location, Singapore is a major port and airport.

[2D view](#)



Despite strong ties with China, a stringent set of preventive measures has limited the number of cases in Singapore so far.

Fig. 2 - 31.03.2020 - Even during the Covid-19 pandemic, sea cargo transport remains very intense.

[2D view](#)



Fig. 3 - S2 (02.03.2019) - 4,3,2 natural colour - Singapore Changi Airport is an important hub in Asia.

[3D view](#)

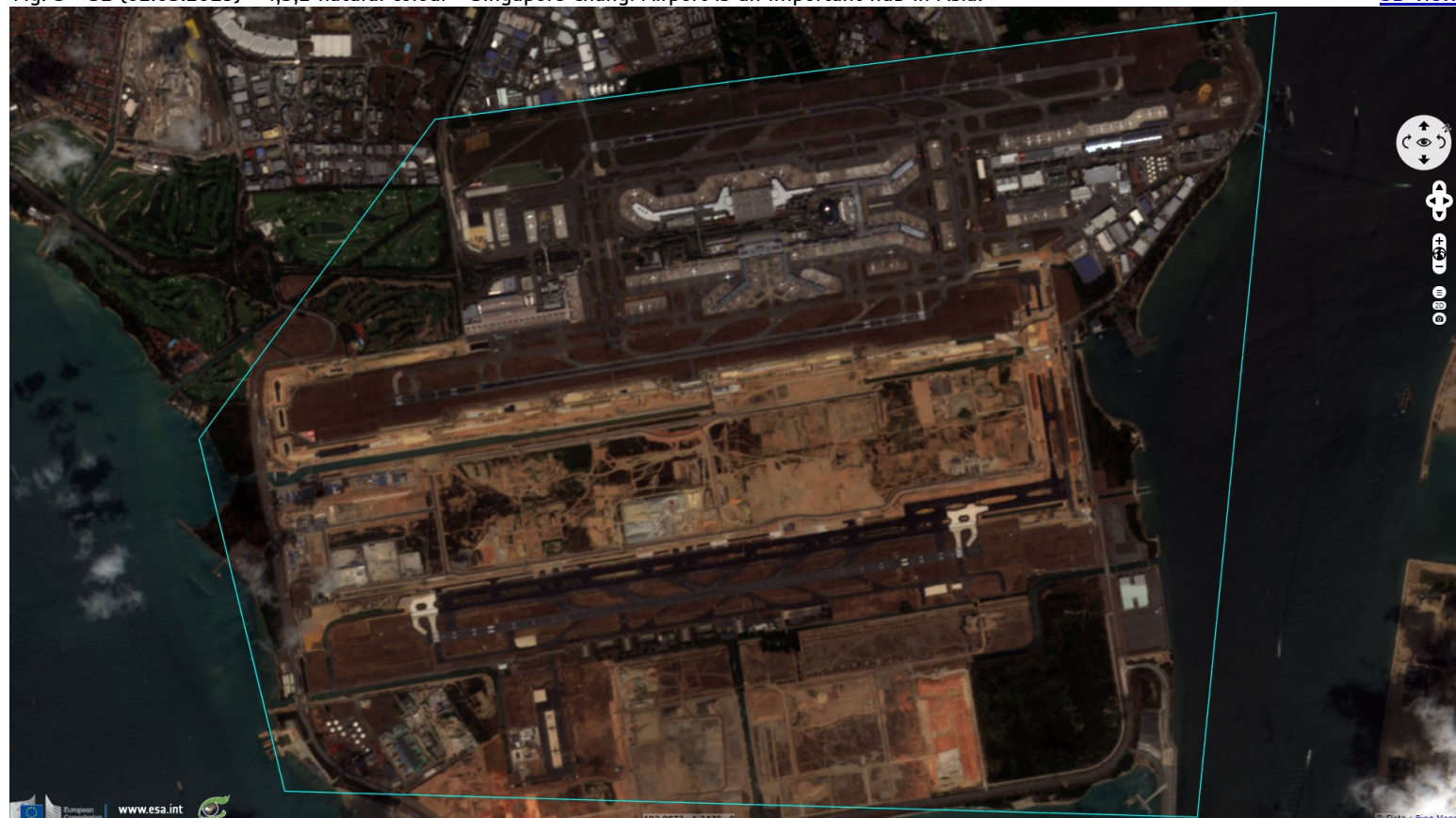
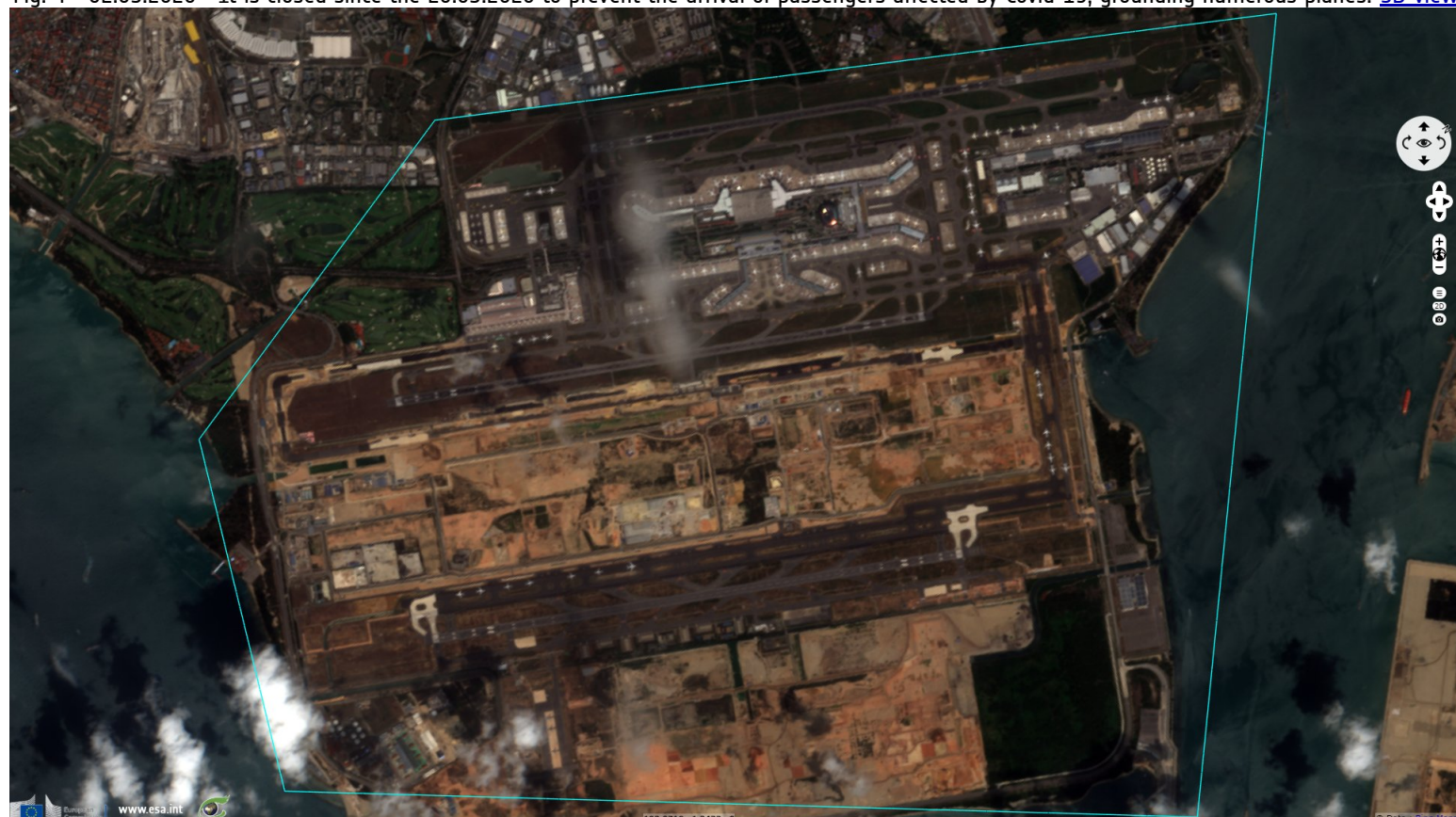














Fig. 4 - 02.03.2020 - It is closed since the 20.03.2020 to prevent the arrival of passengers affected by Covid-19, grounding numerous planes. [3D view](#)



*The views expressed herein can in no way be taken to reflect the official opinion of the European Space Agency or the European Union.
Contains modified Copernicus Sentinel data 2019, processed by VisioTerra.*

More on European Commission space:						
More on ESA:				S-1 website	S-2 website	S-3 website
More on Copernicus program:				SciHub portal	Cophub portal	Inthub portal
More on VisioTerra:				Sentinel Vision Portal	Envisat+ERS portal	Swarm+GOCE portal
				CryoSat portal		