

# Ireland celebrates St Patrick

Sentinel-2 MSI acquired on 25 March 2017 at 11:53:51 UTC  
Sentinel-3 OLCI FR acquired on 08 April 2017 at 11:20:56 UTC

...  
Sentinel-1 CSAR IW acquired on 11 March 2018 from 18:22:12 to 18:22:41 UTC

Author(s): Sentinel Vision team, VisioTerra, France - [svp@visioterra.fr](mailto:svp@visioterra.fr)

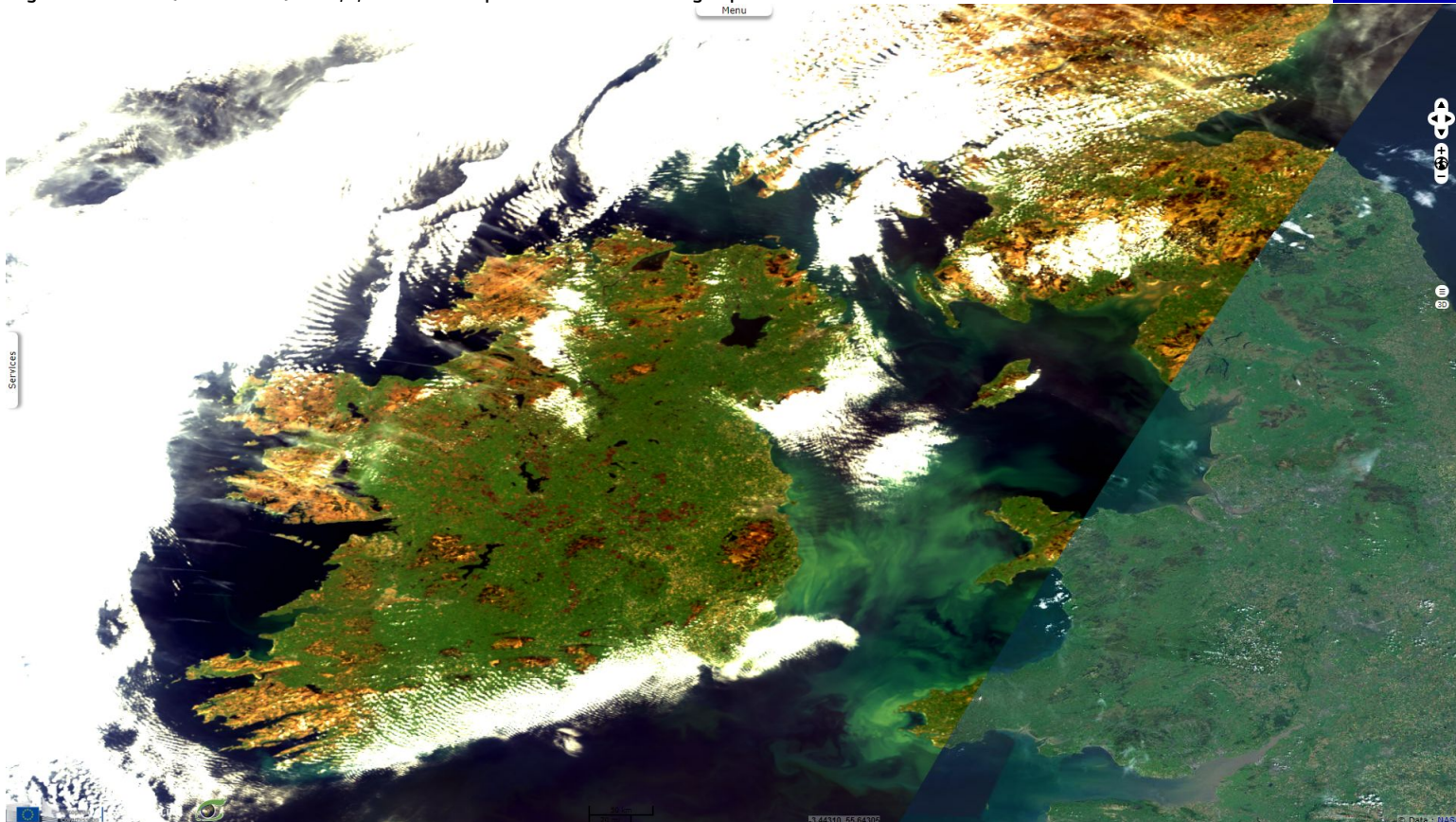
Keyword(s): Land, coastal, water colour, bloom, mountain, orogeny, vegetation, urban, lake, bog, Ireland, United Kingdom, UK



[2D Layerstack](#)

Fig. 1 - S3 OLCI (08.04.2017) - 10,6,3 colour composite - Ireland during a plankton bloom.

[2D animation](#)



The Emerald Isle is often shy from removing its cloudy robe. Its rainy reputation is embodied by locally ubiquitous "seasons of Ireland" references.

Fig. 2 - S2 (08.01.2018) - 4,3,2 natural colour - Dublin & its suburb, Wicklow range is visible to the south.

[2D animation](#)





Fig. 3 - vv,vh,ndi(vh,vv) colour composite - All Irish thousands lie in Munster province, they formed during the caledonian orogeny. [3D view](#) [2D view](#)

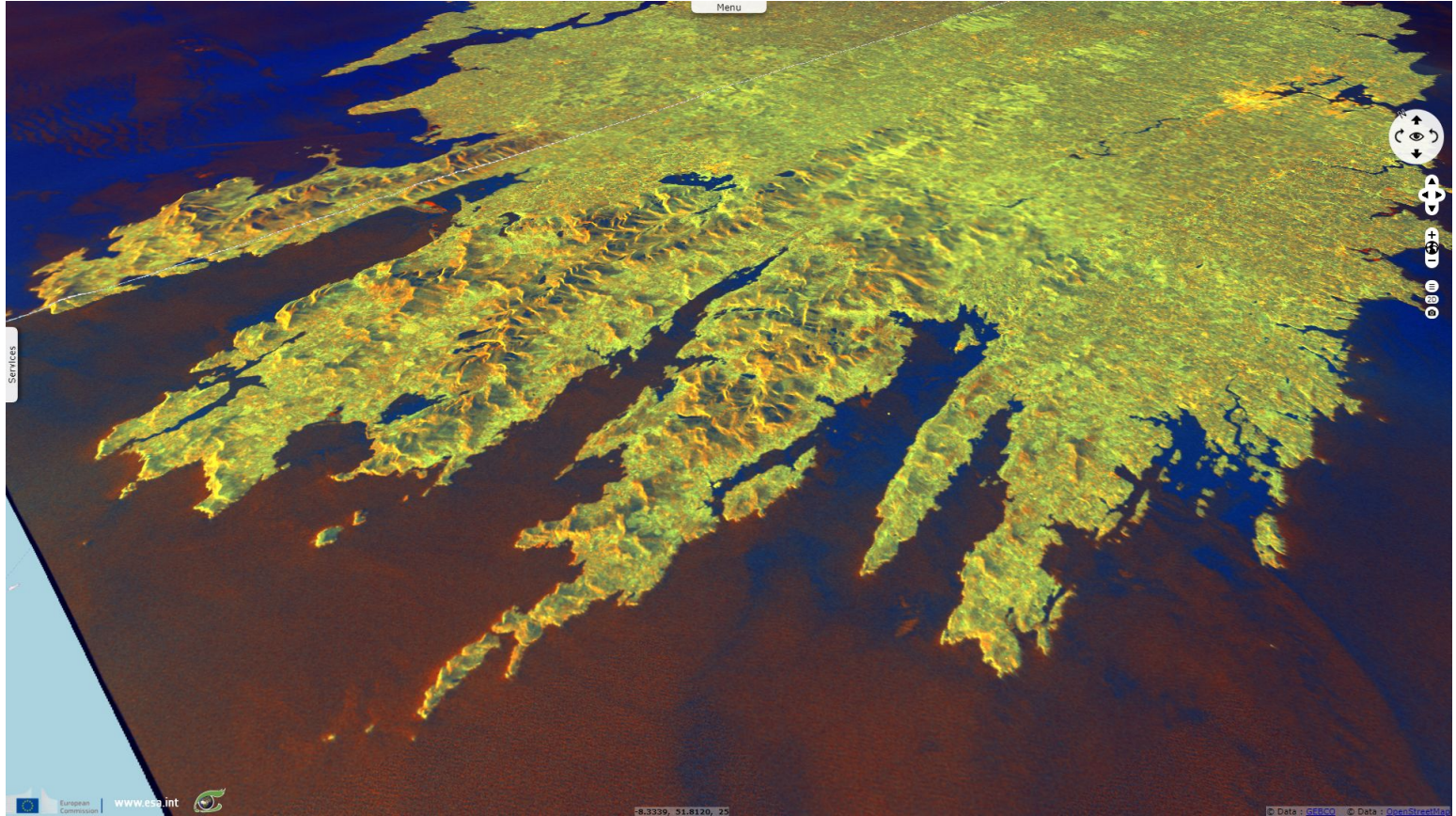


Fig. 4 - 25.03.2017 - 11,8,2 composite - Peat formed inside numerous bogs & lakes, between the hills of Connemara. [3D animation](#) [2D animation](#)



*The views expressed herein can in no way be taken to reflect the official opinion of the European Space Agency or the European Union.*

More on European Commission space:								
More on ESA:				<a href="#">S-1 website</a>	<a href="#">S-2 website</a>	<a href="#">S-3 website</a>		
More on Copernicus program:				<a href="#">SciHub portal</a>	<a href="#">Cophub portal</a>	<a href="#">Inthub portal</a>	<a href="#">Colhub portal</a>	
More on VisioTerra:				<a href="#">Sentinel Vision Portal</a>	<a href="#">Envisat+ERS portal</a>	<a href="#">Swarm+GOCE portal</a>	<a href="#">CryoSat portal</a>	Proba-V portal