

Bay of Gibraltar

Sentinel-1 CSAR IW acquired on 21 May 2017 at 06:27:17 UTC
Sentinel-2 MSI acquired on 26 October 2017 at 11:01:31 UTC

Author(s): Sentinel Vision team, VisioTerra, France - svp@visioterra.fr

Keyword(s): Coastal, urban, port, infrastructure, bay, Spain, United Kingdom



[2D Layerstack](#)

Fig. 1 - S1 (21.05.2017) - vv,vh,vv colour composite - La Ceuta, Spanish enclave in Morocco faces Gibraltar, British enclave in Spain. [2D view](#) [3D view](#)

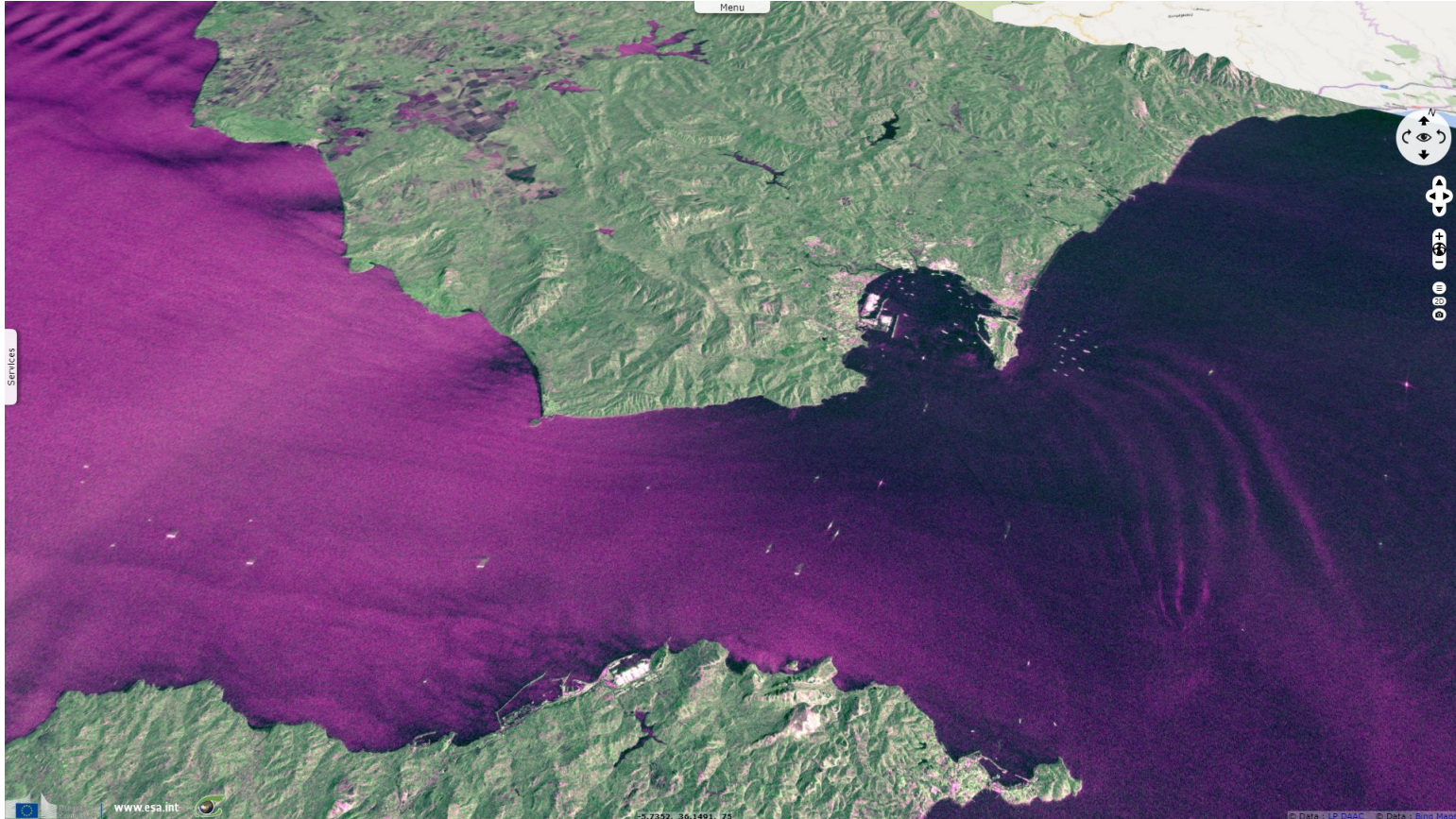
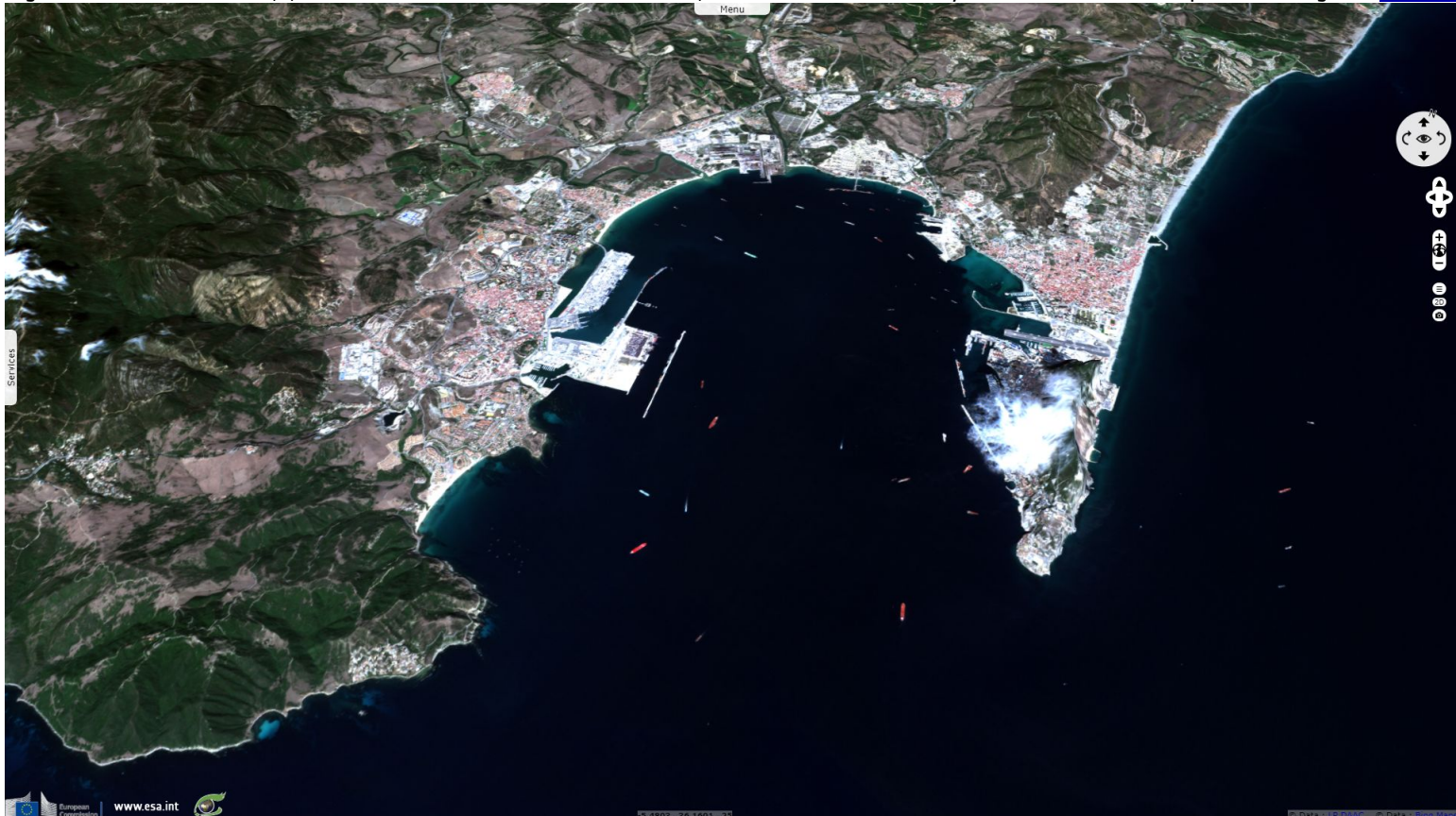


Fig. 2 - S2 (26.10.2017) - 4,3,2 natural colour - Part of the Gibraltar Arc, the "Rock" was formed by the Eurasian & African plates convergence. [3D view](#)



The Rock of Gibraltar & its Moroccan counterpart were considered by Greeks as the two pillars of Hercules marking the end of the known world.

Fig. 3 - 7km² wide, Gibraltar was ceded to Great Britain in 1713. Until the Brexit, it belongs to the EU but not to Schengen Area. [3D view](#) [2D view](#)

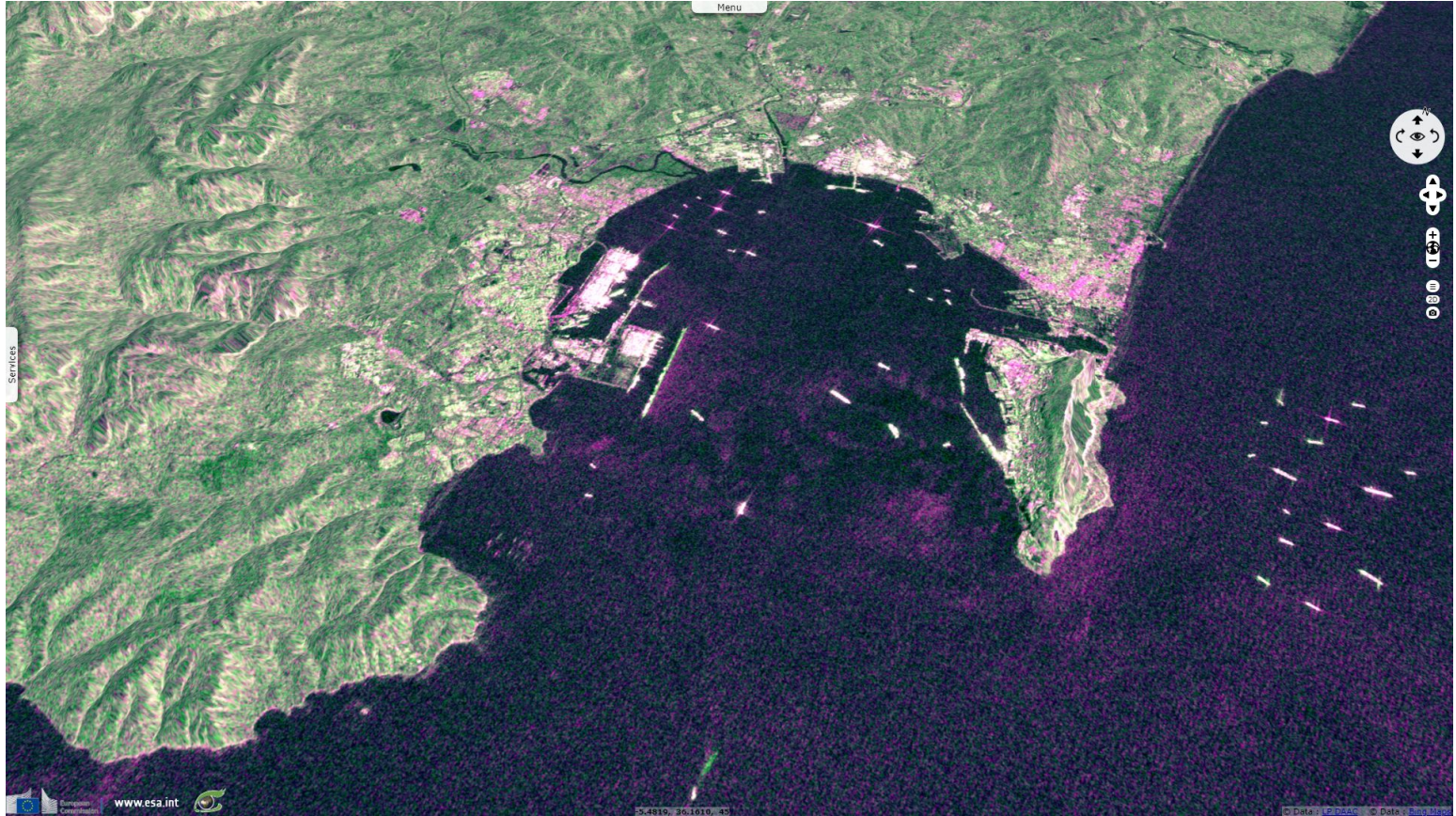


Fig. 4 - 11,8,2 colour composite - Algeciras is mainly a transport hub & industrial city while Gibraltar thrives as a tourist & finance centre. [3D view](#)



*The views expressed herein can in no way be taken to reflect the official opinion of the European Space Agency or the European Union.
Contains modified Copernicus Sentinel data 2019, processed by VisioTerra.*

More on European Commission space:						
More on ESA:				S-1 website	S-2 website	S-3 website
More on Copernicus program:				SciHub portal	Cophub portal	Inthub portal
More on VisioTerra:				Sentinel Vision Portal	Envisat+ERS portal	Swarm+GOCE portal