

Acqua alta in Venice

Sentinel-3 SRAL LAND acquired on 30 September 2018 at 09:32:20 UTC
Sentinel-1 CSAR IW acquired on 23 October 2018 at 16:58:15 UTC
Sentinel-1 CSAR IW acquired on 23 October 2018 at 16:58:40 UTC
Sentinel-3 SRAL LAND acquired on 27 October 2018 at 09:32:21 UTC
Sentinel-1 CSAR IW acquired on 29 October 2018 at 16:57:56 UTC

Author(s): Sentinel Vision team, VisioTerra, France - svp@visioterra.fr

Keyword(s): Coastal, lagoon, wind, storm surge, tide, Italy, Adriatic Sea.



[3D Layerstack](#)

Fig. 1 - S1 (29.10.2018) - vv,vh,vv colour composite - At the northern end of Adriatic Sea, most lagoon landscape was underwater.

[3D animation](#)

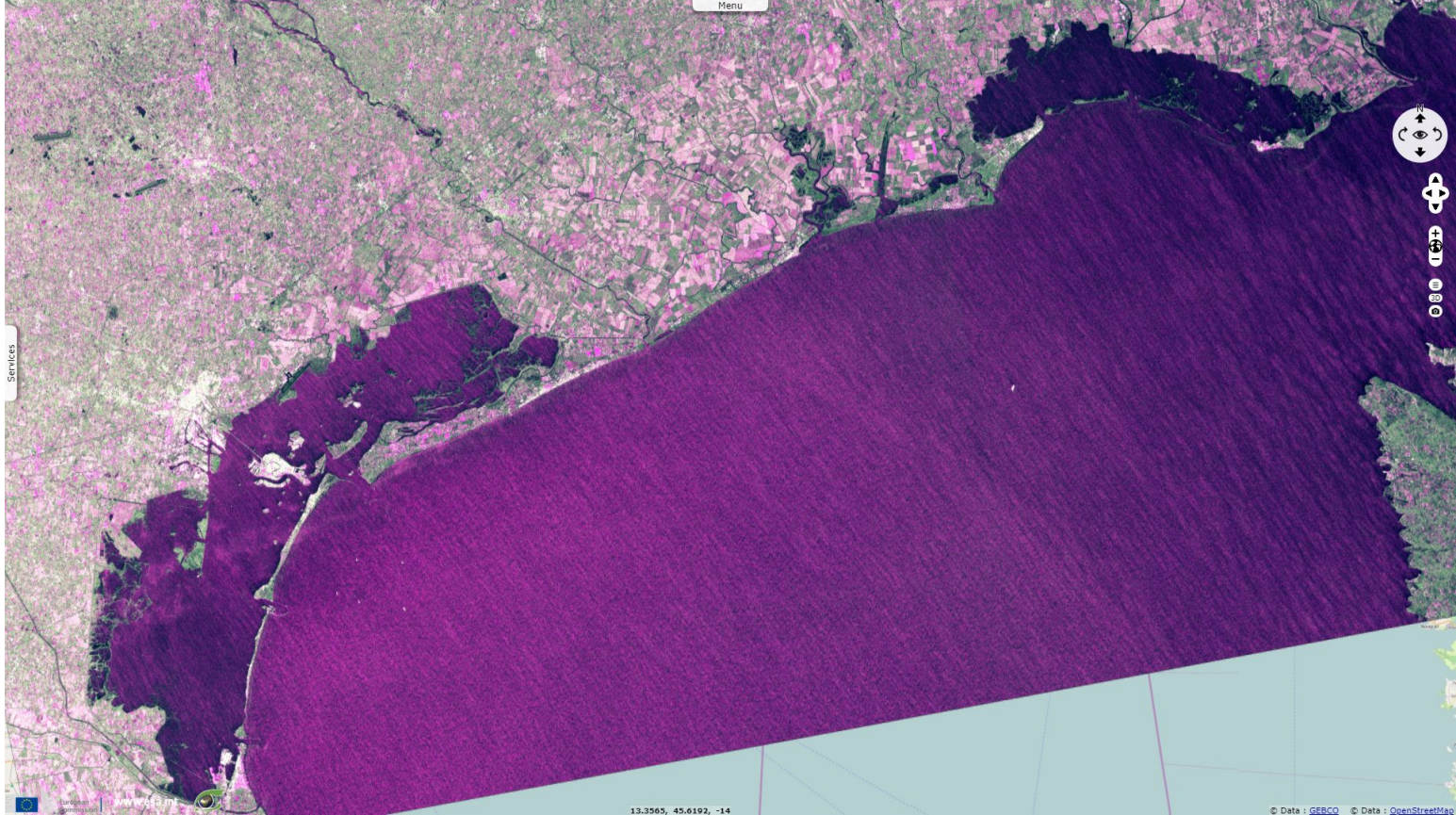


Fig. 2 - Venice during the storm, notice numerous ships were docked.

[2D animation](#)

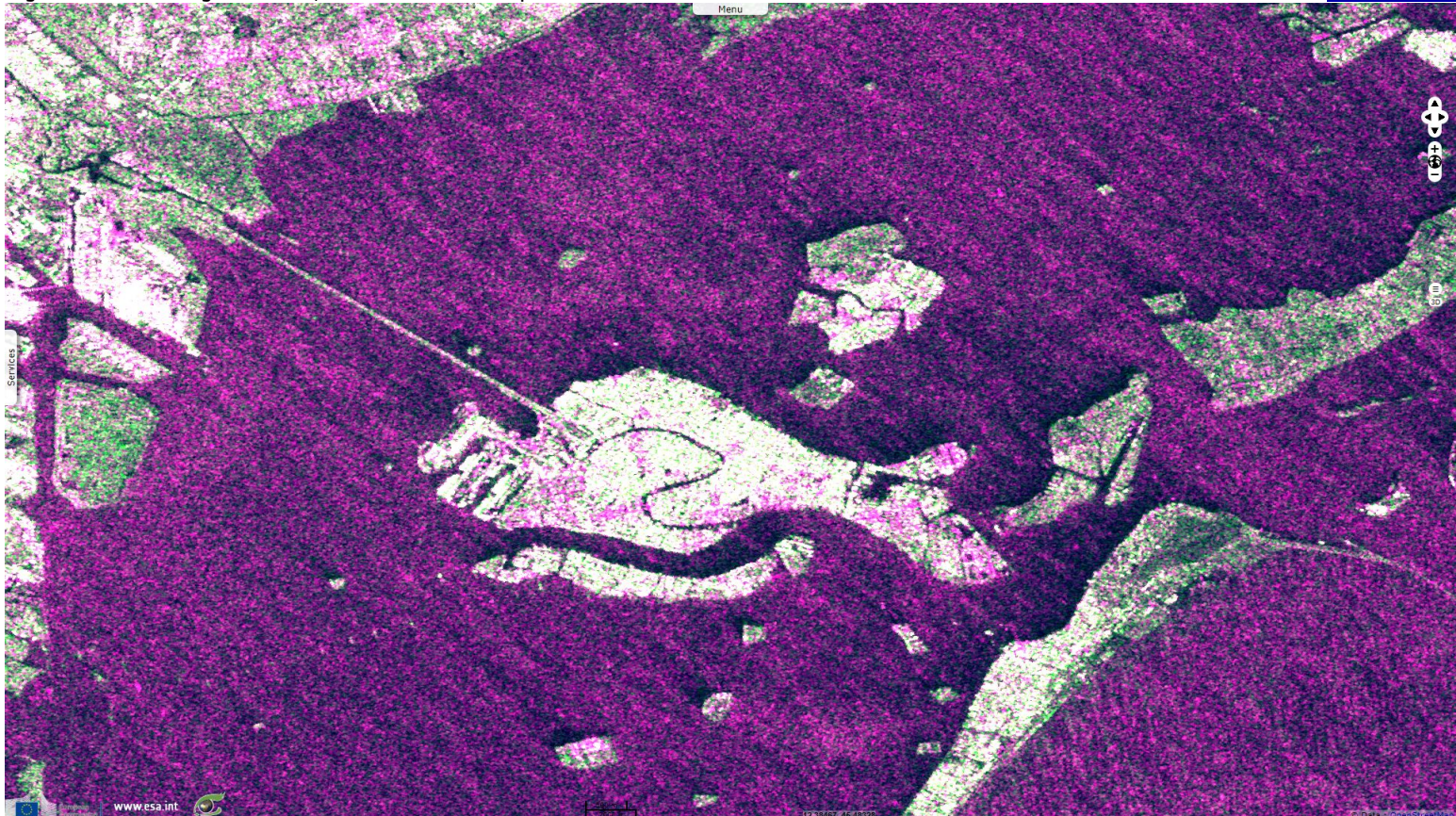


Fig. 3 - S3 SRAL (27.10.2018) - Height from "ocean" altimeter range, 20Hz Plrm-Ku - This 156cm acqua alta is in the top 6.

[3D animation](#)

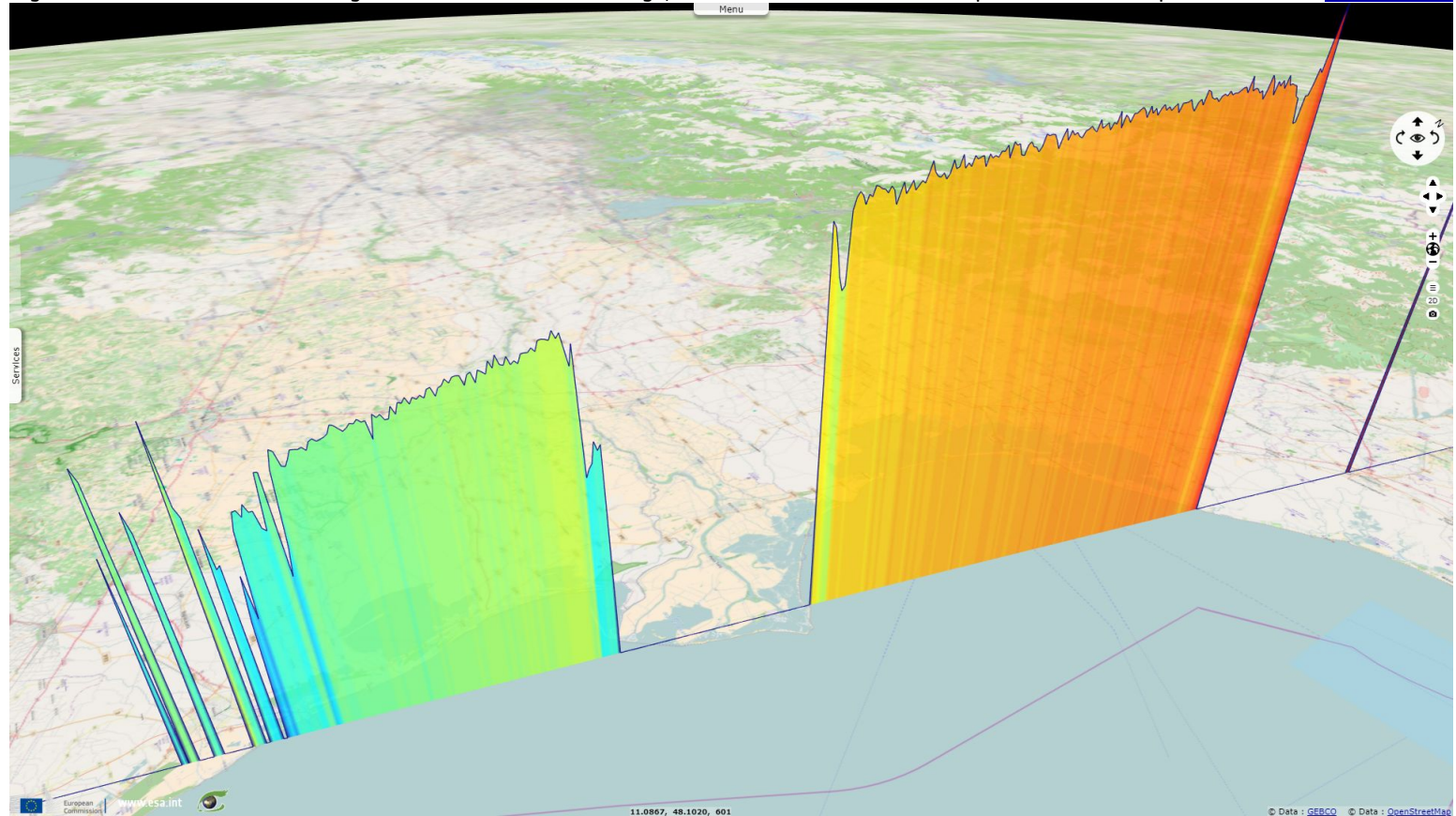
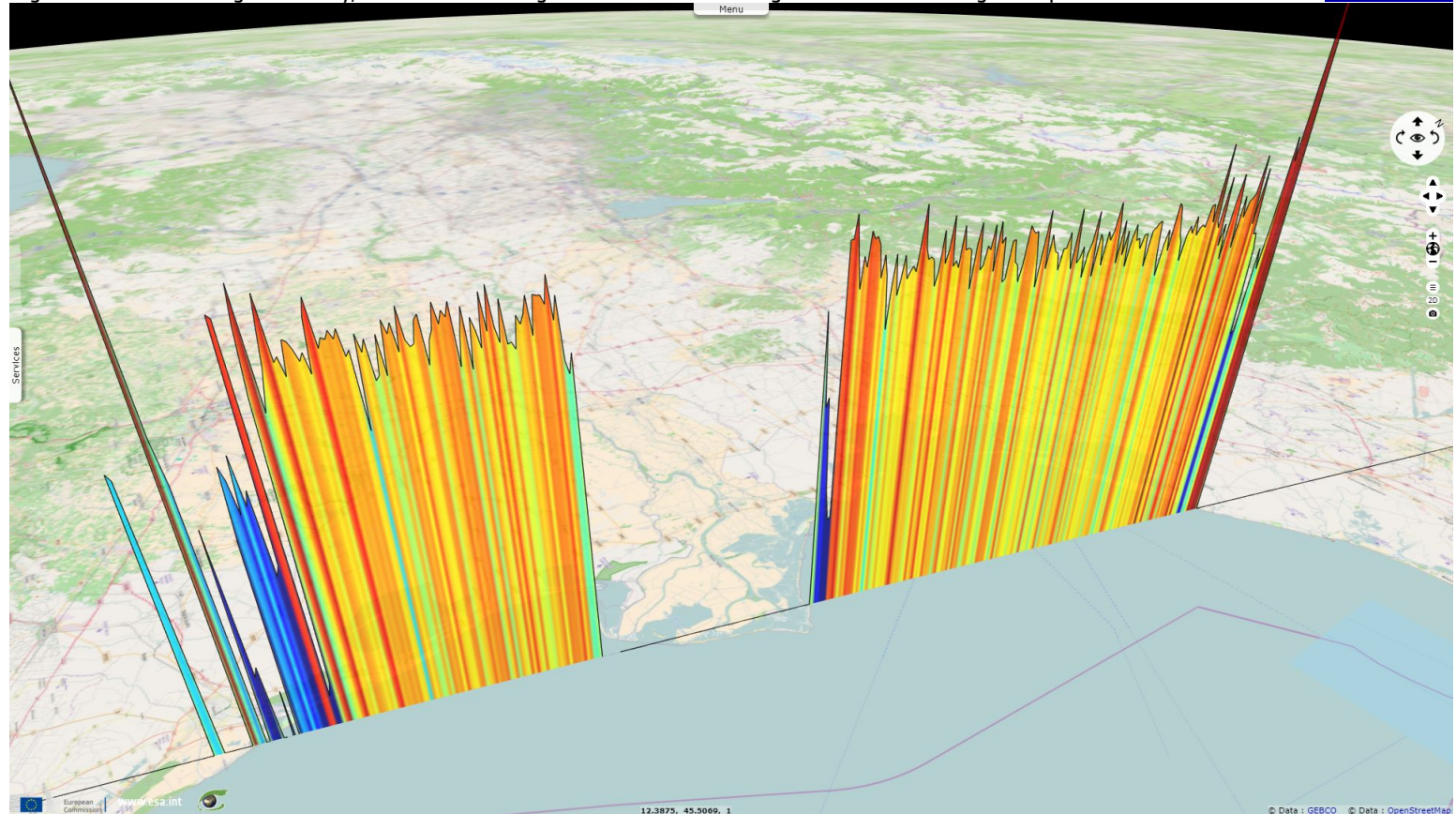


Fig. 4 - Sea surface height anomaly, 20Hz Plrm-Ku - High tide coef & storm surge combined as strong wind pushed the water north.

[3D animation](#)



The views expressed herein can in no way be taken to reflect the official opinion of the European Space Agency or the European Union.

More on European Commission space:							
More on ESA:				S-1 website	S-2 website	S-3 website	
More on Copernicus program:				SciHub portal	Cophub portal	Inthub portal	Colhub portal
More on VisioTerra:				Sentinel Vision Portal	Envisat+ERS portal	Swarm+GOCE portal	CryoSat portal Proba-V portal