

Between floodplain and sand dunes, Kuludzhun State Nature Sanctuary in East Kazakhstan

Sentinel-1 CSAR IW acquired on 24 March 2023 from 12:11:18 to 12:12:08 UTC
Sentinel-2 MSI acquired on 25 March 2023 at 05:26:49 UTC

...
Sentinel-1 CSAR IW acquired on 28 May 2023 from 12:19:28 to 12:19:53 UTC
Sentinel-2 MSI acquired on 03 June 2023 at 05:26:49 UTC

Author(s): Sentinel Vision team, VisioTerra, France - svp@visioterra.fr

Keyword(s): Land, sand dunes, erg, floodplain, reservoir lake, protected area, biodiversity, steppe, Kazakhstan

Fig. 1 - S2 (03.06.2023 / COP-DEM) - Kuludzhun State Nature Sanctuary is located near Bukhtarma reservoir in East Kazakhstan.

[2D view](#) [2D view](#)

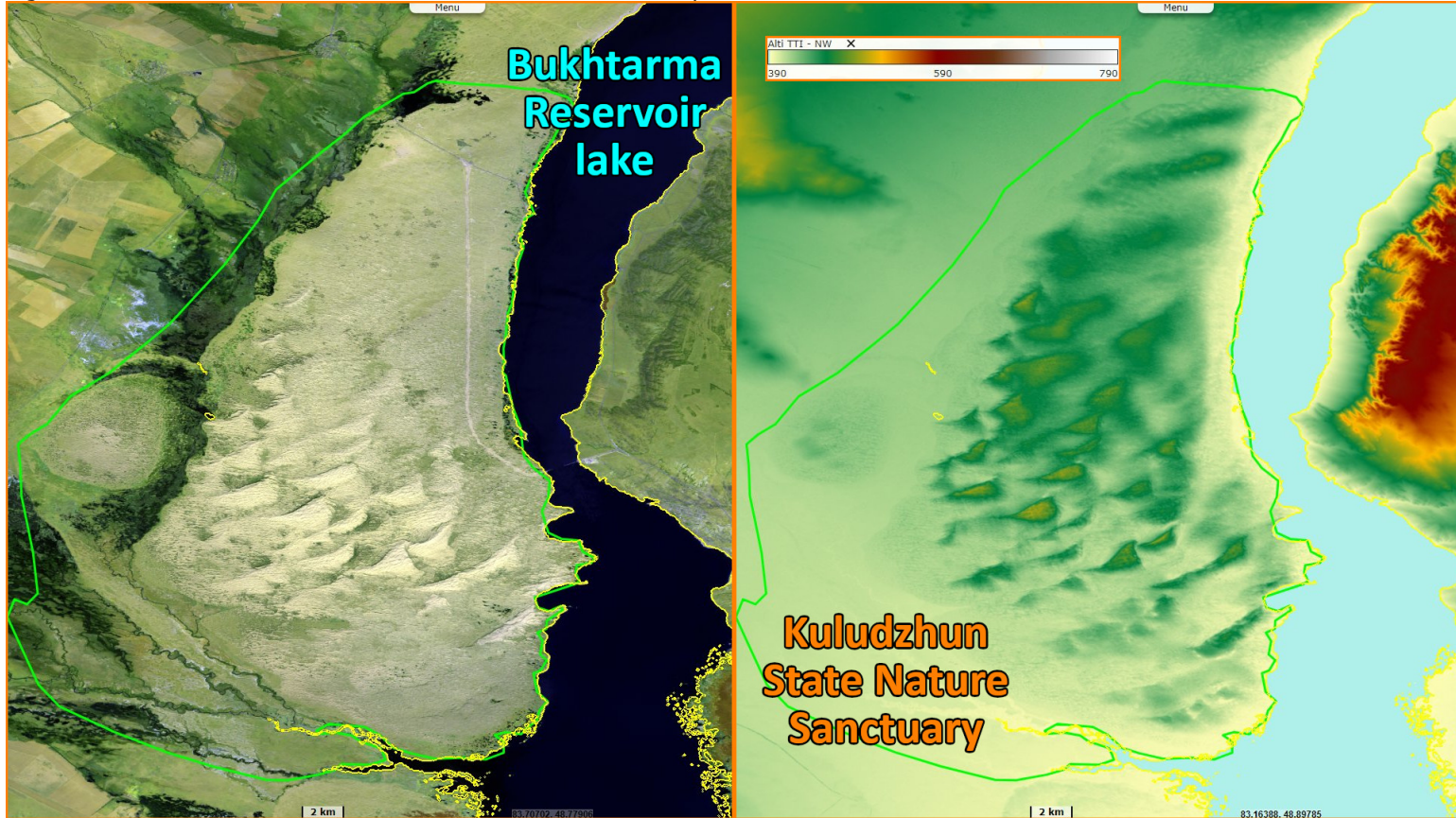


Fig. 2 - S2 (25.03.2023) / S1 (24.03.2023) - It is made up of a flood plain formed by alluvial erosion and loose sand dunes created by wind erosion. [3D view](#) [3D view](#)

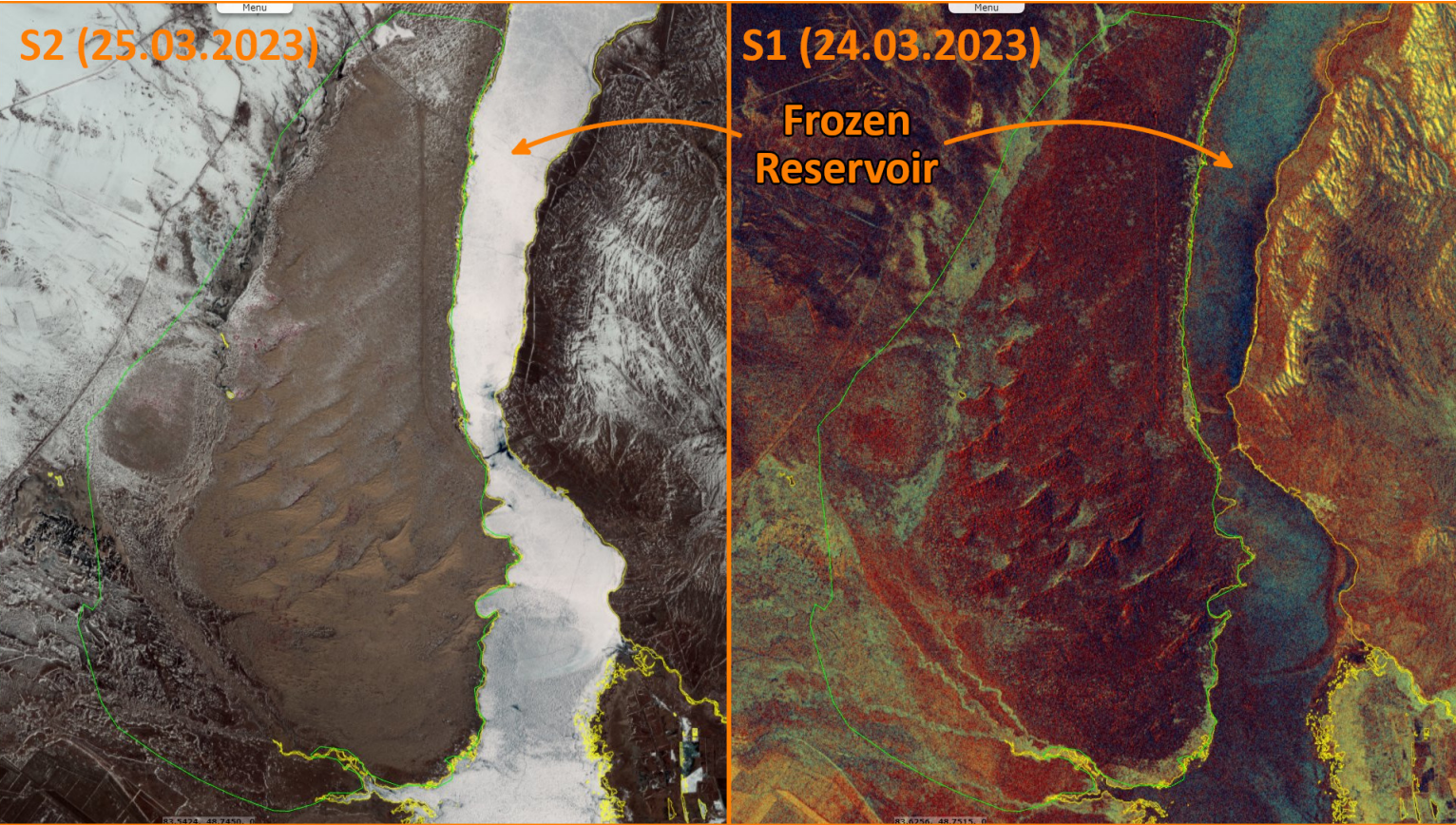
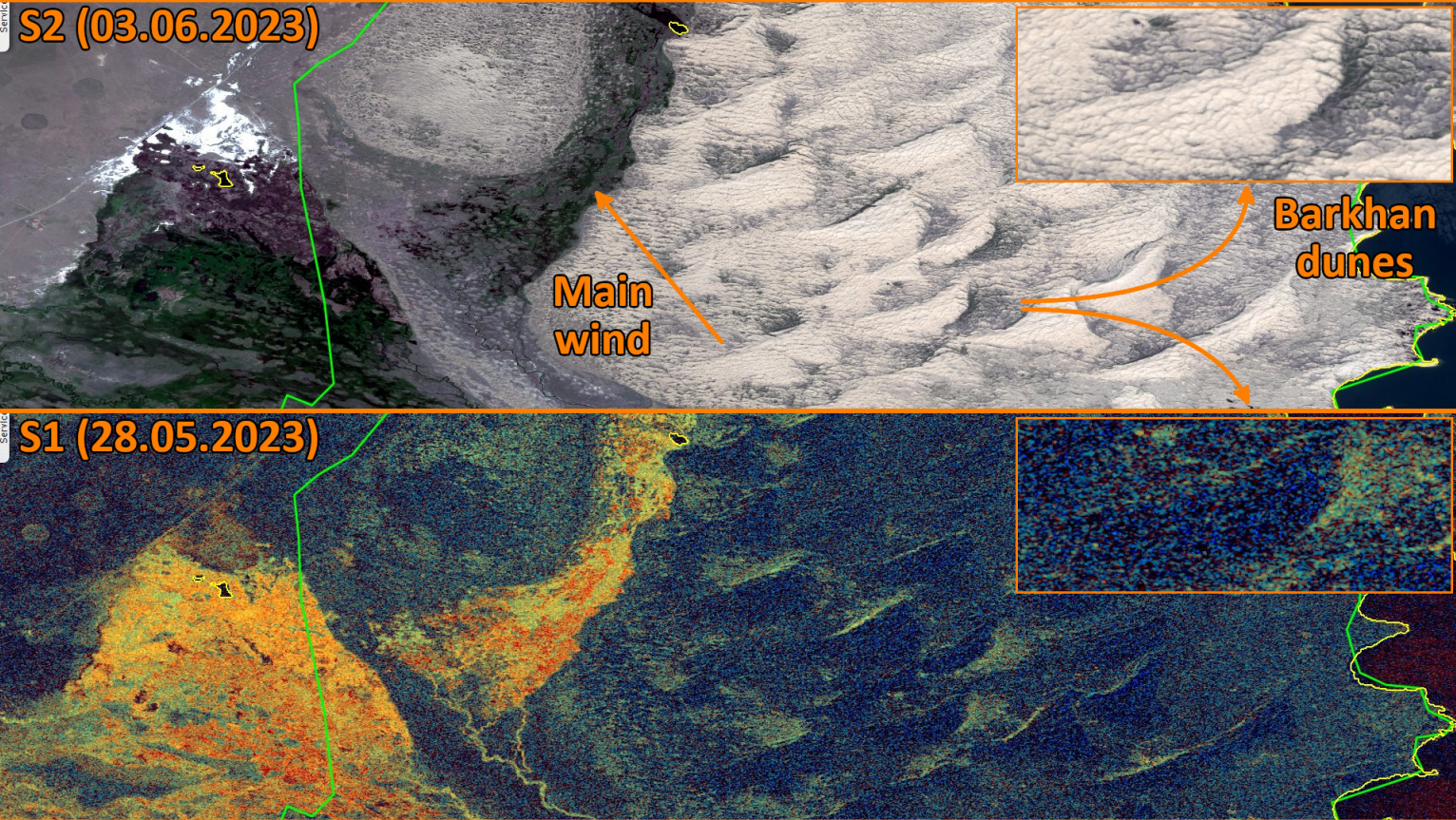














Fig. 3 - S2 (03.06.2023) / S1 (28.05.2023) - It is a hotspot of biodiversity for this steppe area. [2D view](#) [2D view](#)



*The views expressed herein can in no way be taken to reflect the official opinion of the European Space Agency or the European Union.
Contains modified Copernicus Sentinel data 2023, processed by VisioTerra.*

More on European Commission space:						
More on ESA:				S-1 website	S-2 website	S-3 website
More on Copernicus program:				SciHub portal	Cophub portal	Inthub portal Colhub portal
More on VisioTerra:				Sentinel Vision Portal	Envisat+ERS portal	Swarm+GOCE portal CryoSat portal

