

Sentinel Vision
SED-721
31 August 2020



[3D Layerstack](#)

Possible all time air temperature record with 54.4°C at Death Valley, California, USA

Sentinel-3 OLCI FR acquired on 16 August 2020 at 17:46:40 UTC

Sentinel-3 SLSTR RBT acquired on 16 August 2020 at 18:26:04 UTC

Sentinel-2 MSI acquired on 16 August 2020 at 18:29:21 UTC

Author(s): Sentinel Vision team, VisioTerra, France - svp@visioterra.fr

Keyword(s): Climate, atmosphere, desert, rain shadow, mountain range, subduction, geology, USA, Pacific Ring of Fire

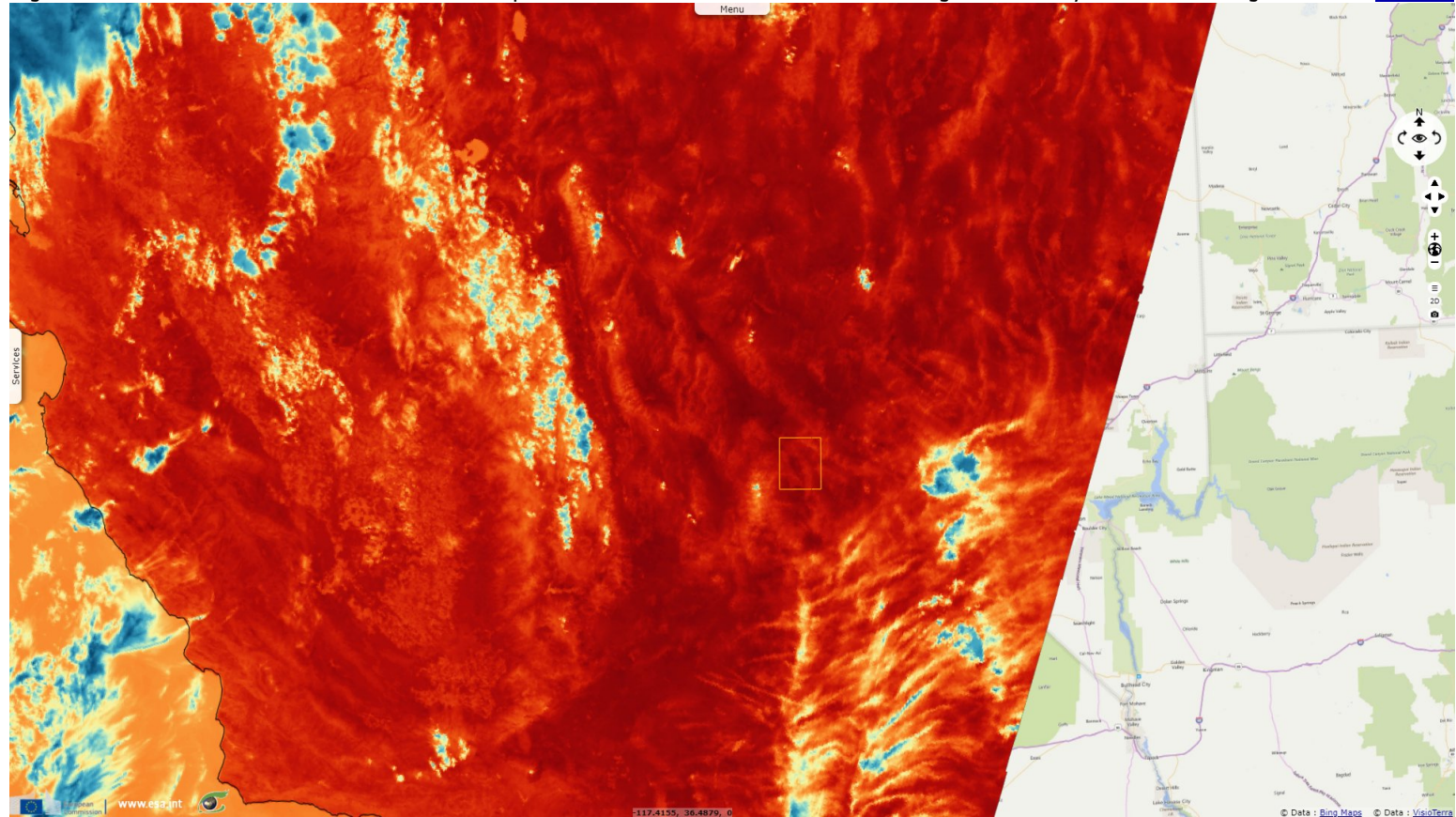
Fig. 1 - S3 OLCI (16.08.2020) - Mojave Desert lies in California in the Basin and Range region, between Sierra Nevada at west, Rockies at east and Sonora desert at south.

[2D view](#)



Fig. 2 - S3 SLSTR (16.08.2020) - The 54.4°C air temperature recorded at Furnace Creek on 16 August 2020 may be an all time high.

[3D view](#)



Its old record of 56.7°C in 1913 is now deemed quite unlikely. Similarly, they are doubts on all top 5 measures recorded so far. If validated, this might be the highest precisely recorded value yet.

Fig. 3 - S2 (16.08.2020) - Death Valley National Monument is a very arid area located in a rain shadow of several ranges that separate it from the nearby Pacific Ocean.

[3D view](#)

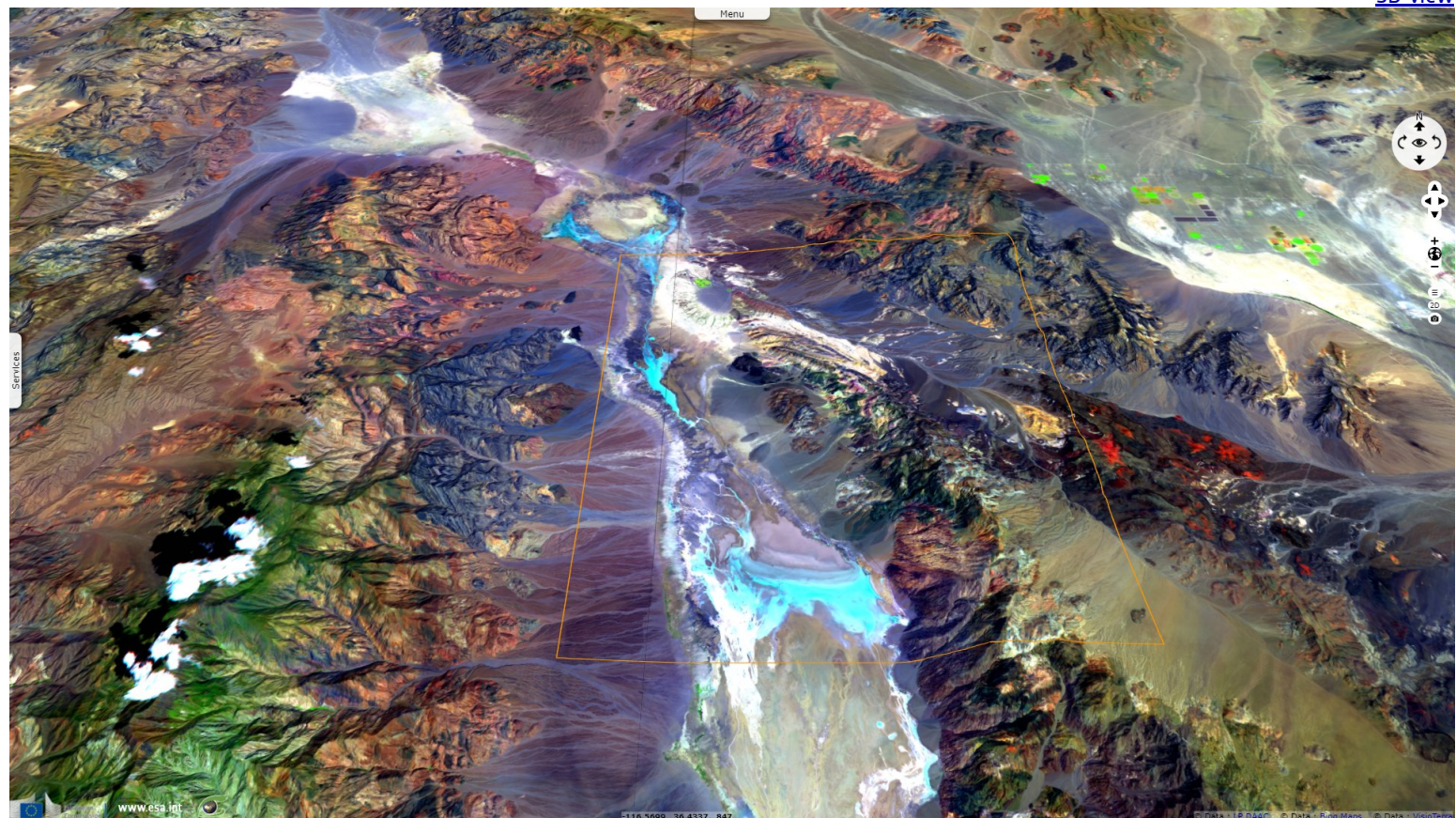


Fig. 4 - This mineral-rich region is formed by subduction combining the 3366m Telescope Peak and the -85m Badwater Basin 24km away. [3D view](#)

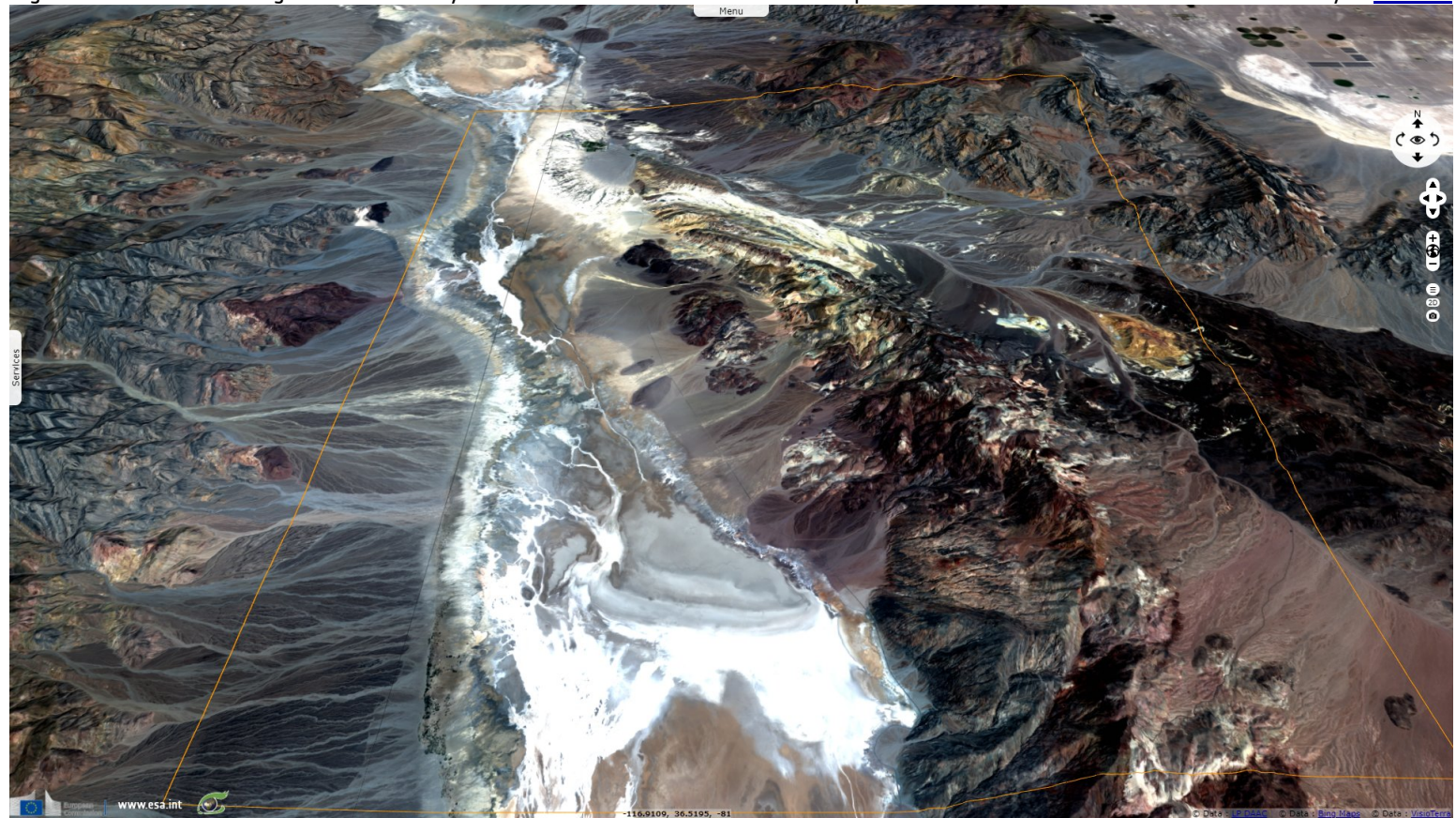
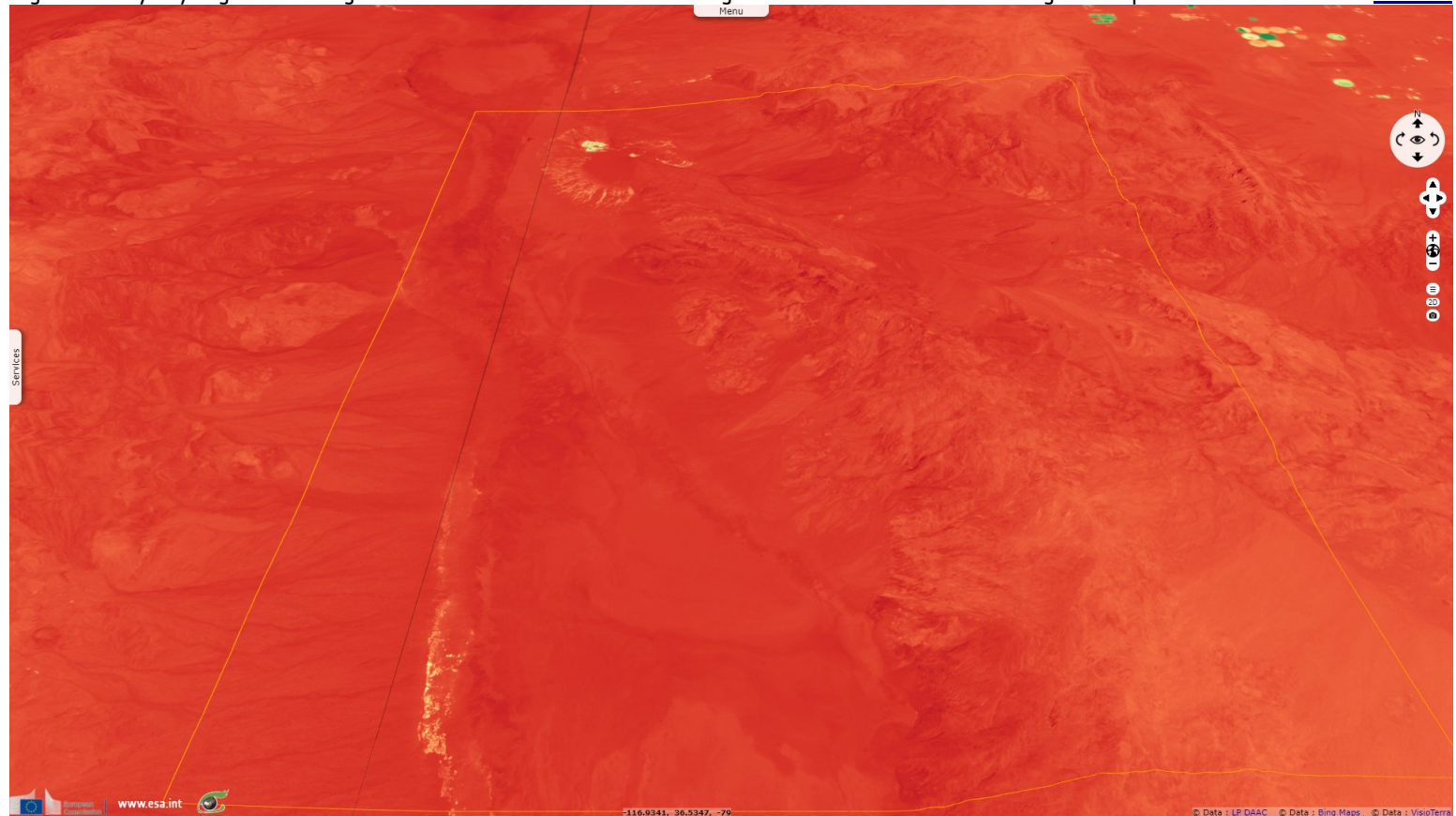


Fig. 5 - Hardly any vegetation can grow under this climate. Furnace Creek golf course shows at north and irrigated cropland at north-east. [3D view](#)



*The views expressed herein can in no way be taken to reflect the official opinion of the European Space Agency or the European Union.
Contains modified Copernicus Sentinel data 2020, processed by VisioTerra.*

More on European Commission space:						
More on ESA:				S-1 website	S-2 website	S-3 website
More on Copernicus program:				SciHub portal	Cophub portal	Inthub portal
More on VisioTerra:				Sentinel Vision Portal	Envisat+ERS portal	Swarm+GOCE portal
				CryoSat portal		