

Large landslide in western Greenland

Sentinel-1 CSAR IW acquired on 05 June 2021 at 10:23:55 UTC

...

Sentinel-2 MSI acquired on 09 June 2021 at 15:48:09 UTC

Sentinel-2 MSI acquired on 18 June 2021 at 15:29:11 UTC

Sentinel-1 CSAR IW acquired on 24 June 2021 at 10:15:46 UTC

Author(s): Sentinel Vision team, VisioTerra, France - svp@visioterra.fr

Keyword(s): Geohazard, landslide, cryosphere, arctic, coastal, peninsula, Greenland, Denmark



[3D Layerstack](#)

Fig. 1 - S2 (09.06.2021) - On 15 June, a large landslide occurred on the margin of the Sullorsuaq Strait, western Greenland.

[3D view](#)

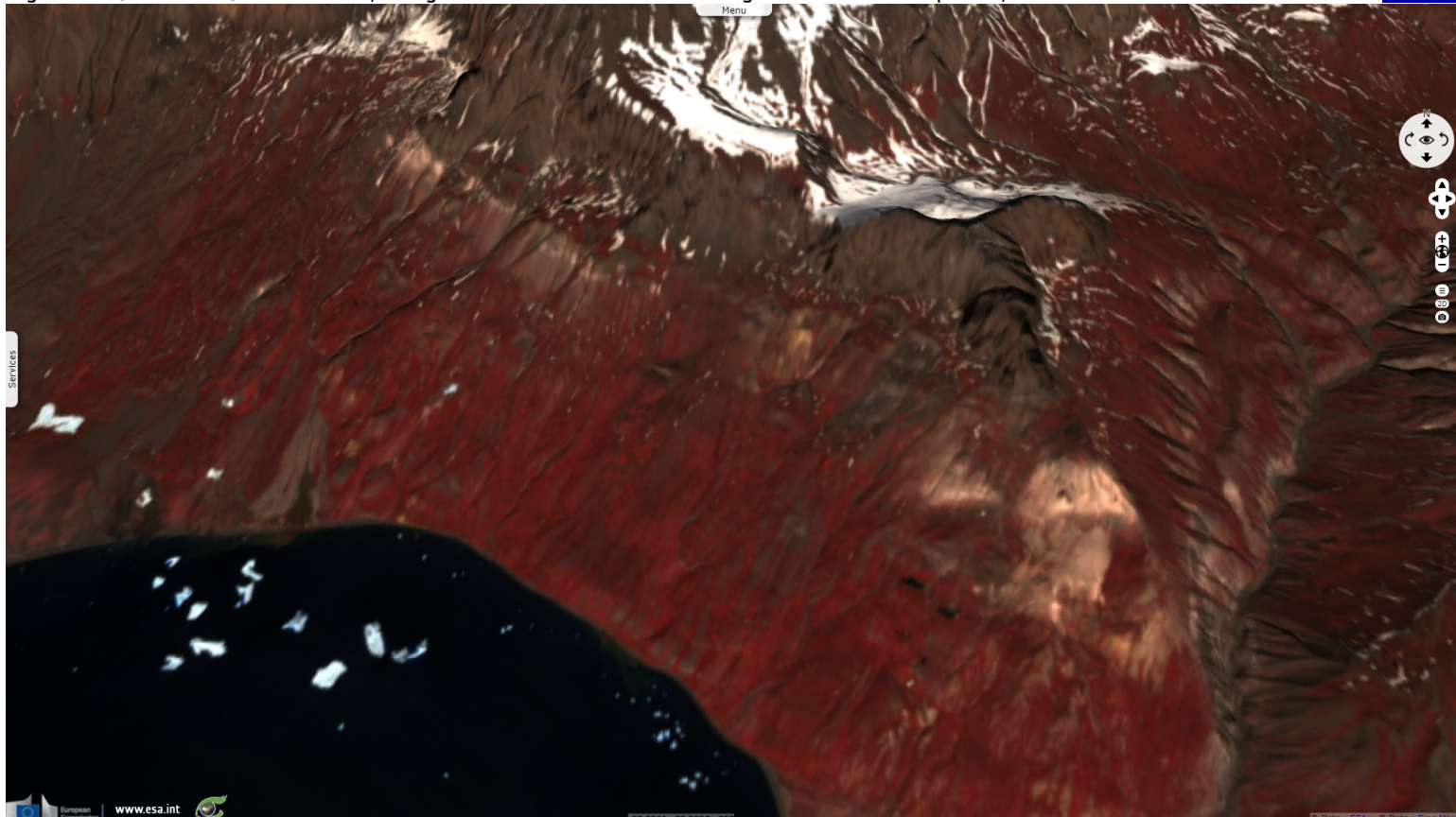


Fig. 2 - S2 (18.06.2021) - This failure has occurred on a steep rock slope, the source area is at 820 m above sea level, about 2.4 km inland.

[3D view](#)

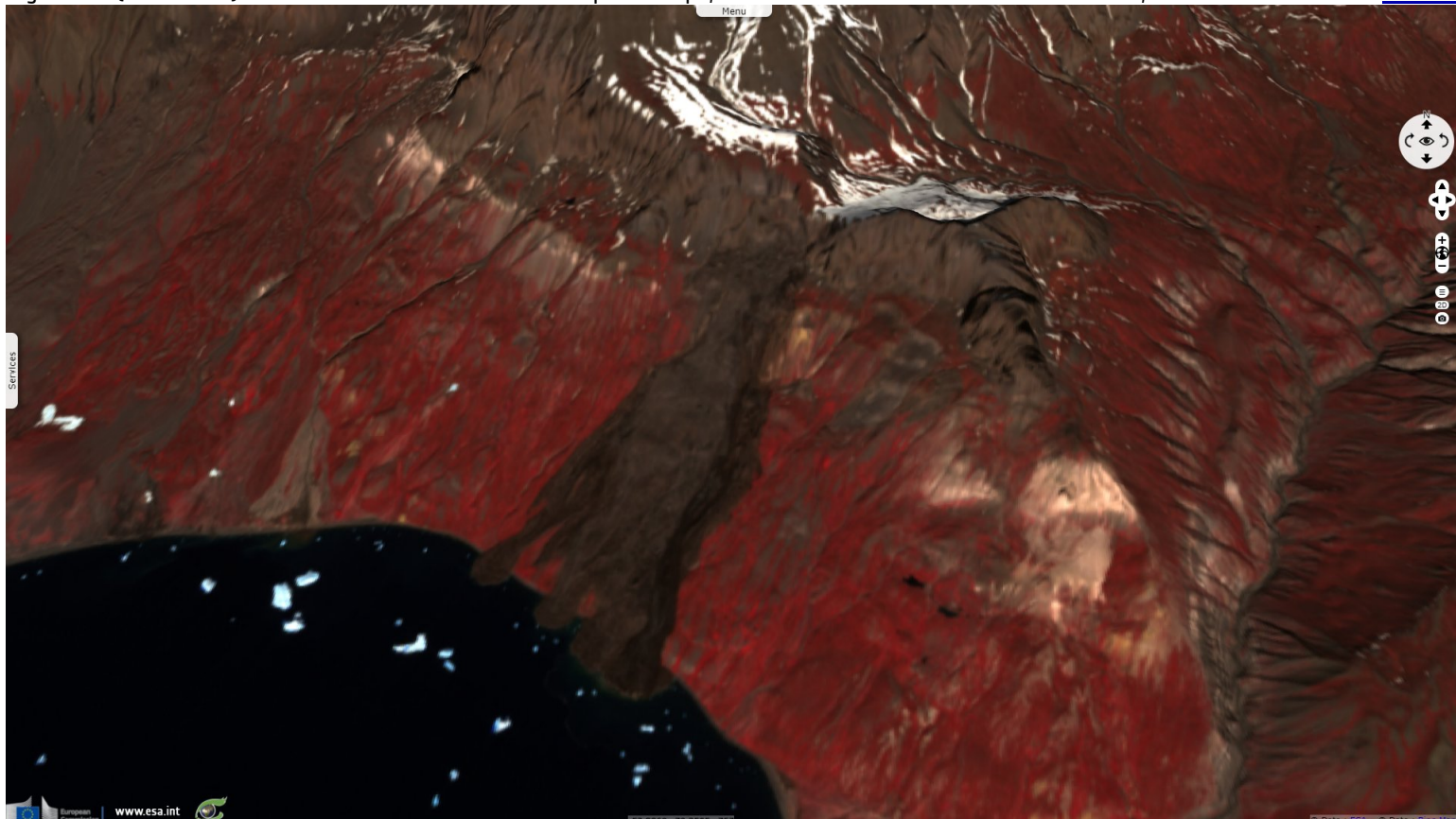


Fig. 3 - S1 (05, 07, 08 & 12.06.2021) - The landslide into the Sullorsuaq was a 2.5 km long failure with flow type behaviour.

[3D view](#)

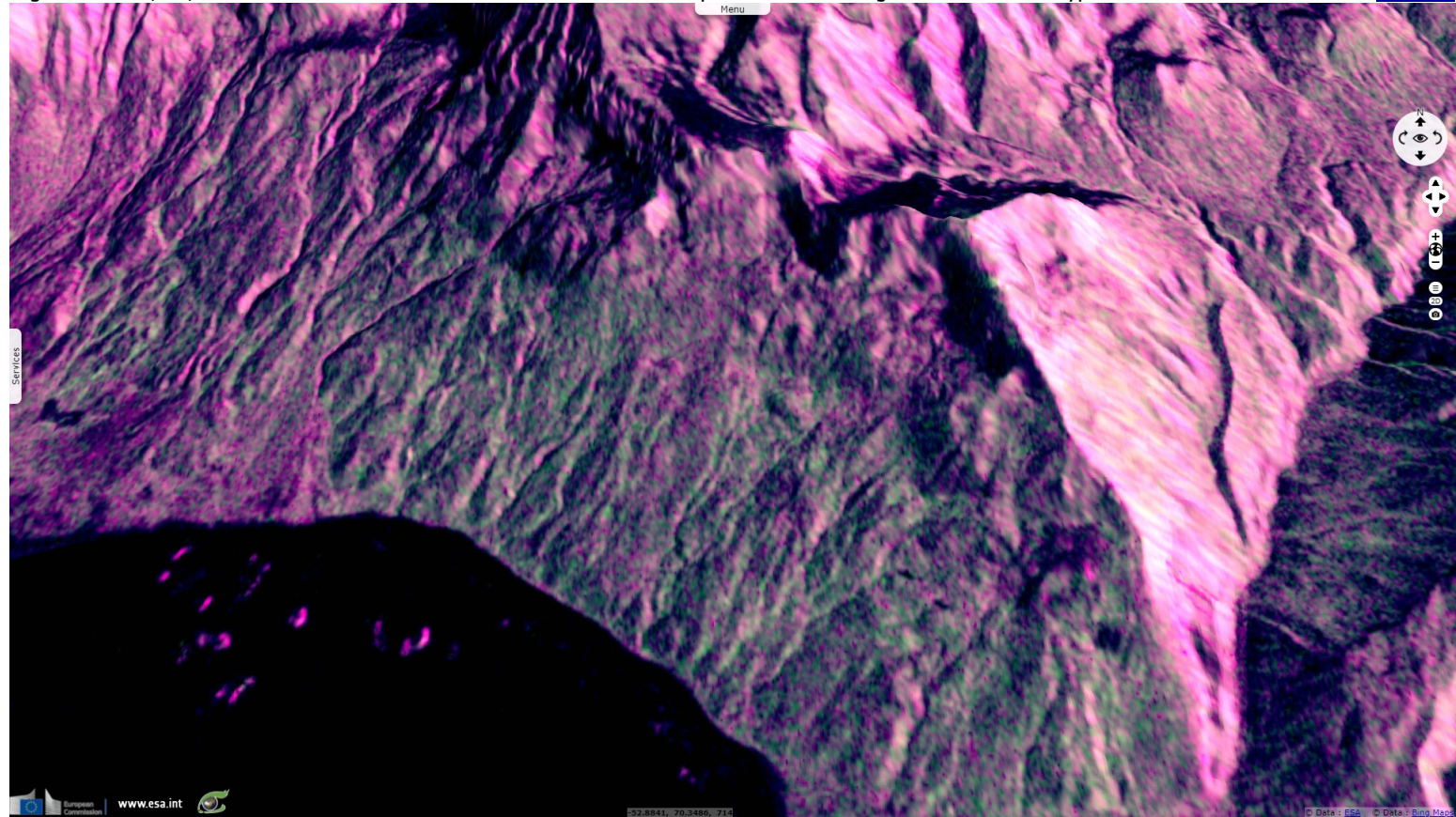


Fig. 4 - S1 (17, 19, 20 & 24.06.2021) - The image shows multiple lobes of material that have built impressive deposits into the water.

[3D view](#)

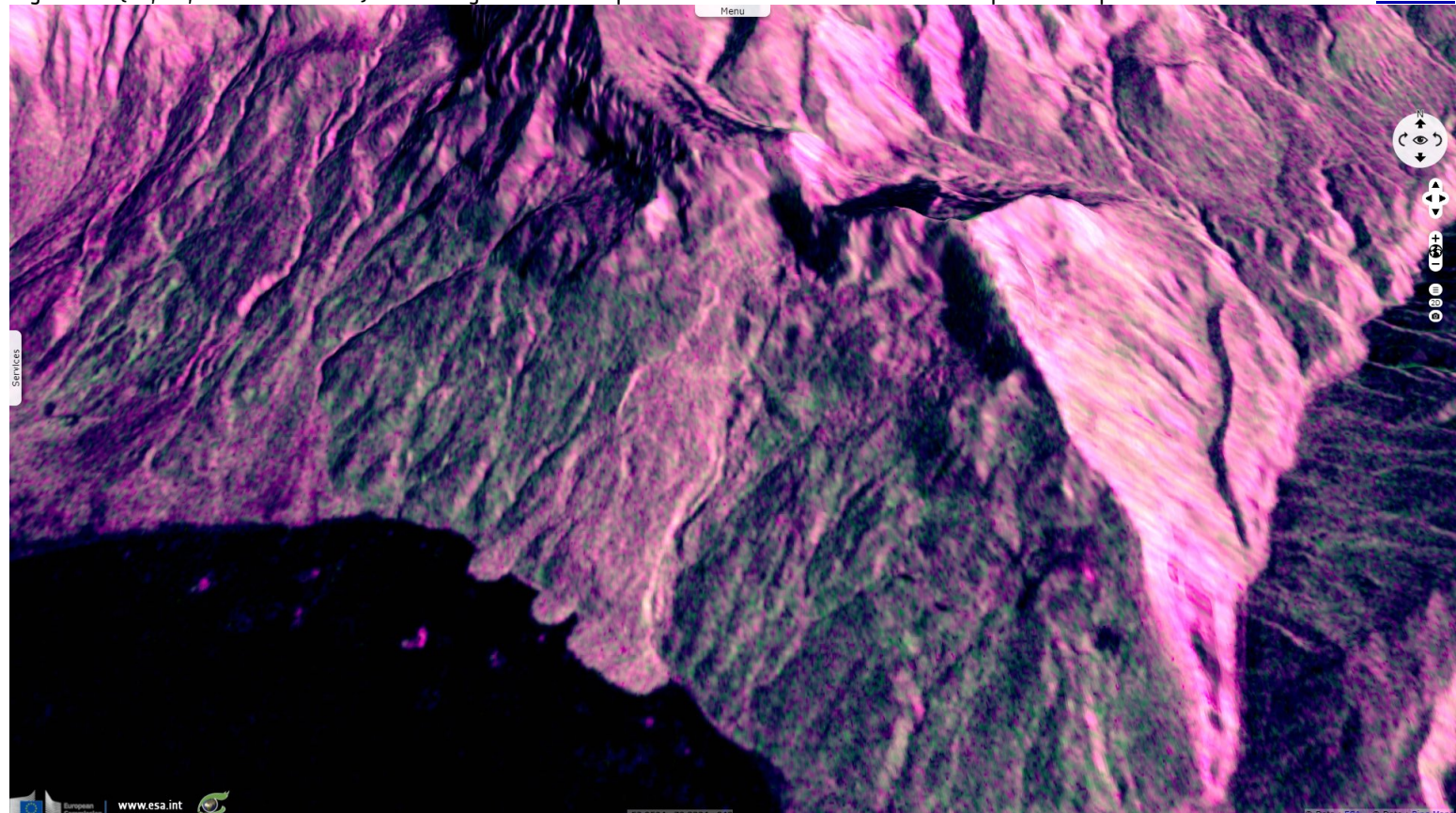


Fig. 5 - S2 (09 & 18.06.2021) - This multidate image shows both the removal of vegetated area and the material deposits on open water. [3D view](#)

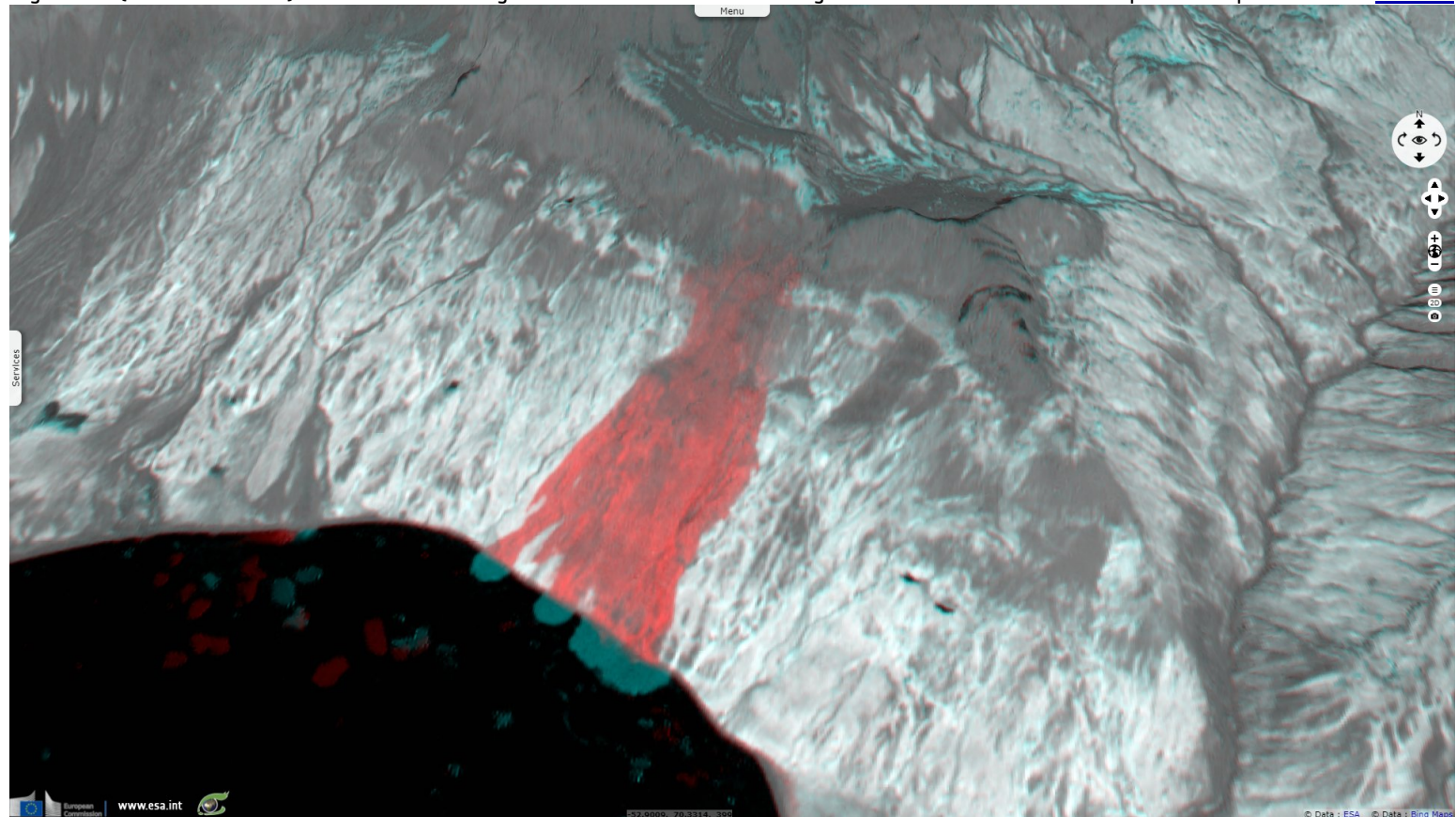
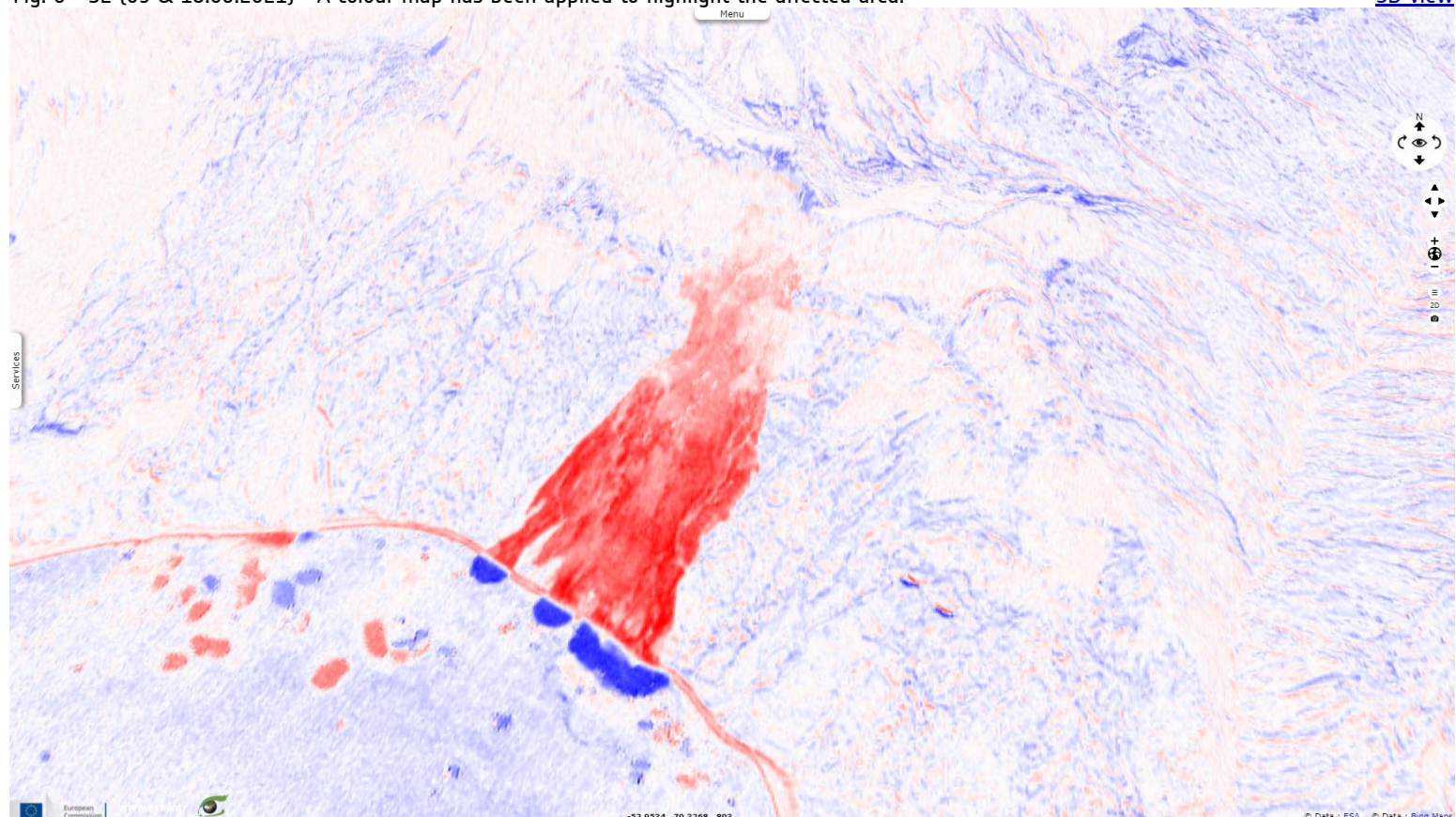














Fig. 6 - S2 (09 & 18.06.2021) - A colour map has been applied to highlight the affected area. [3D view](#)



*The views expressed herein can in no way be taken to reflect the official opinion of the European Space Agency or the European Union.
Contains modified Copernicus Sentinel data 2021, processed by VisioTerra.*

More on European Commission space:						
More on ESA:				S-1 website	S-2 website	S-3 website
More on Copernicus program:				SciHub portal	Cophub portal	Inthub portal
More on VisioTerra:				Sentinel Vision Portal	Envisat+ERS portal	Swarm+GOCE portal
				CryoSat portal		