

A cruise ship quarantined after a coronavirus outbreak

Sentinel-1 CSAR IW acquired on 03 February 2020 at 20:43:22 UTC
Sentinel-2 MSI acquired on 07 February 2020 at 01:28:29 UTC
Sentinel-1 CSAR IW acquired on 09 February 2020 at 08:41:08 UTC
Sentinel-2 MSI acquired on 12 February 2020 at 01:27:51 UTC

Author(s): Sentinel Vision team, VisioTerra, France - svp@visioterra.fr

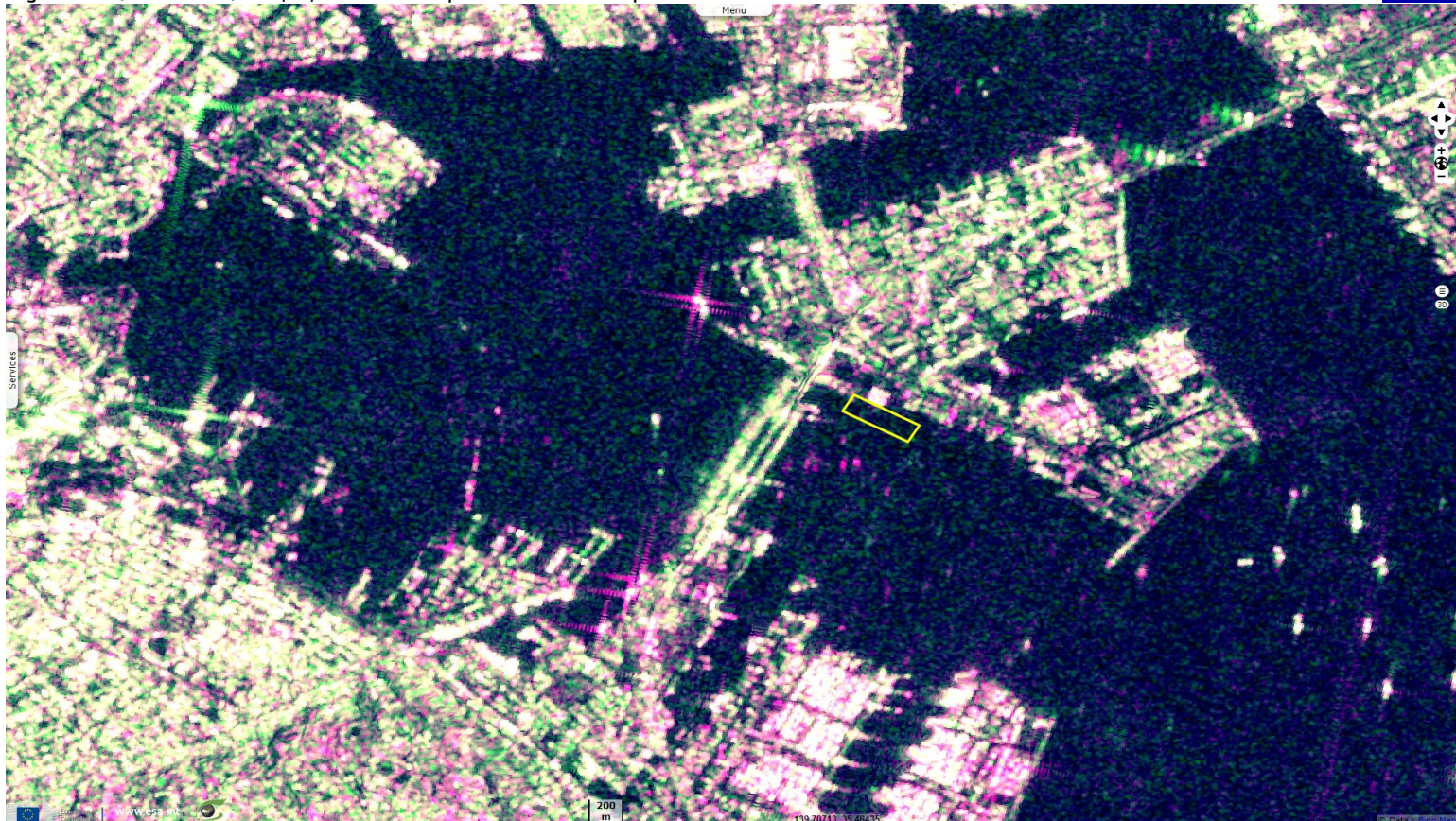
Keyword(s): Urban, port, ship, security, health, Japan



[2D Layerstack](#)

Fig. 1 - S1 (03.02.2020) - vv,vh,vv colour composite - Yokohama port before the arrival of the Diamond Princess on 03.02.2020.

[2D view](#)



After a single case of covid-19 on 01.02.2020, the Diamond Princess cruise ship was quarantined in Okinawa but later released.

Fig. 2 - S2 (07.02.2020) - 4,3,2 natural colour - New cases on board forced 3700 people to be quarantined in the port of Yokohama.

[2D view](#)

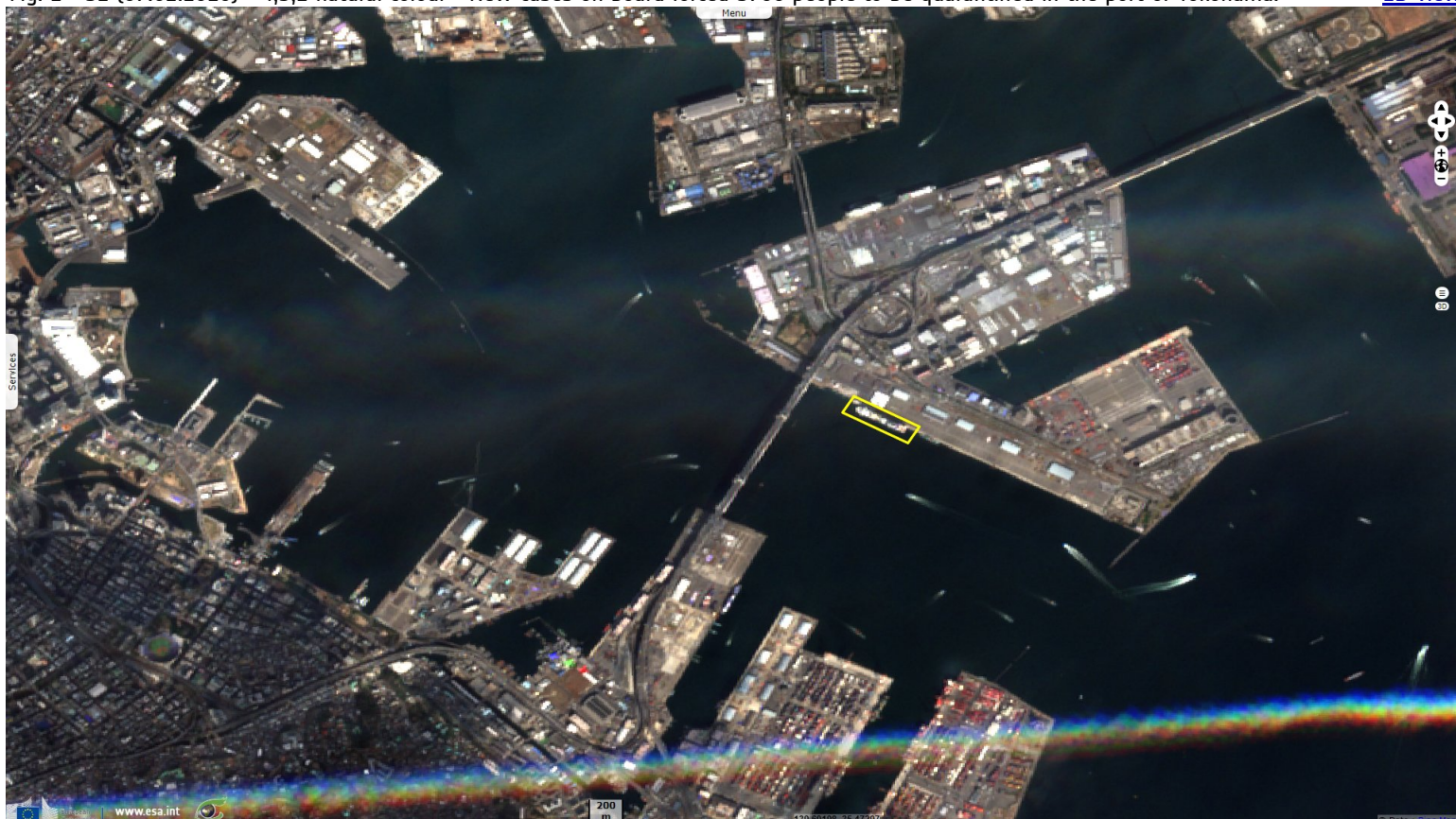


Fig. 3 - S1 (09.02.2020) - vv,vh,vv colour composite - The number of people with confirmed cases reached 61 people the 07th, 135 the 10th. [2D view](#)

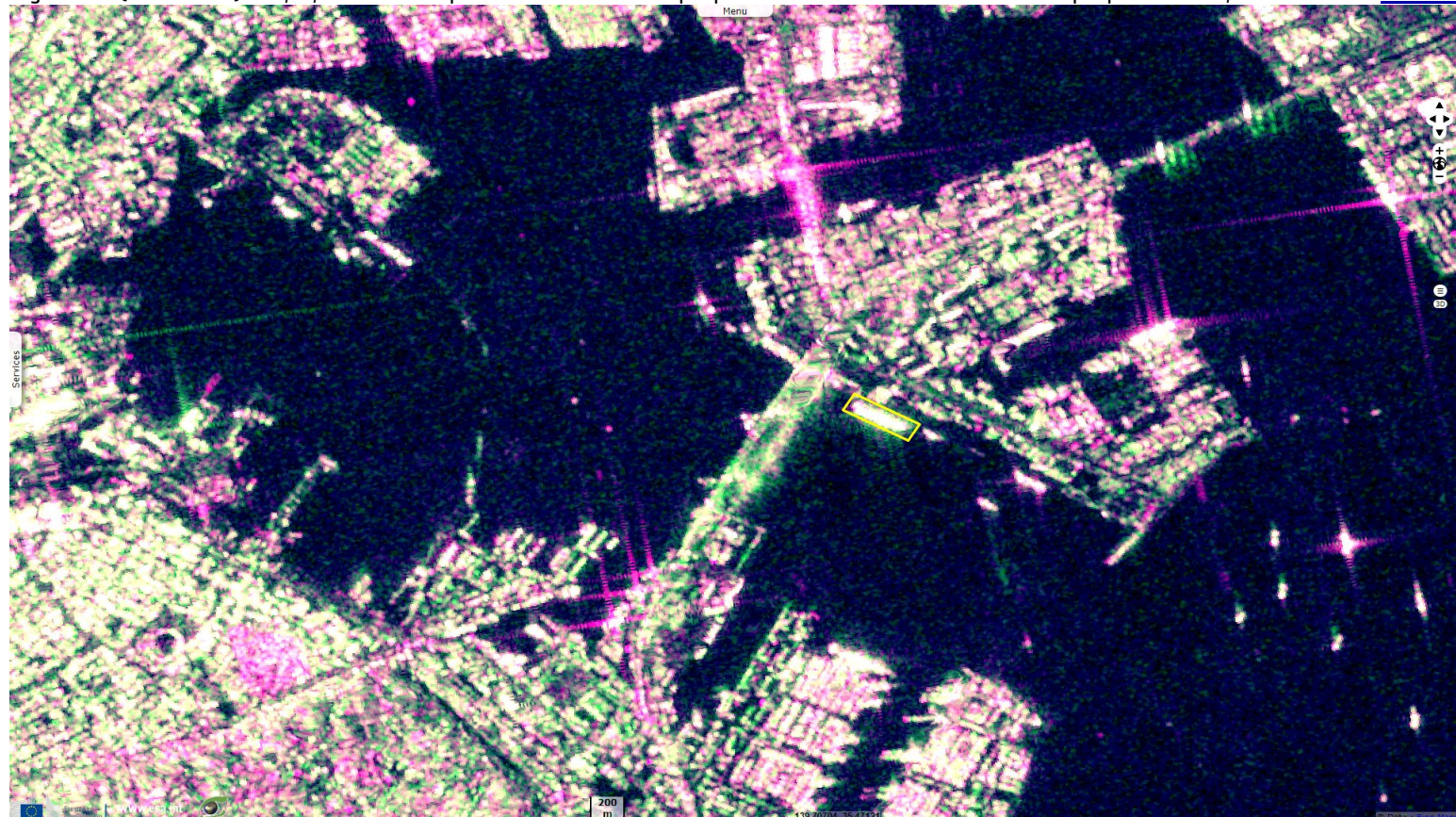
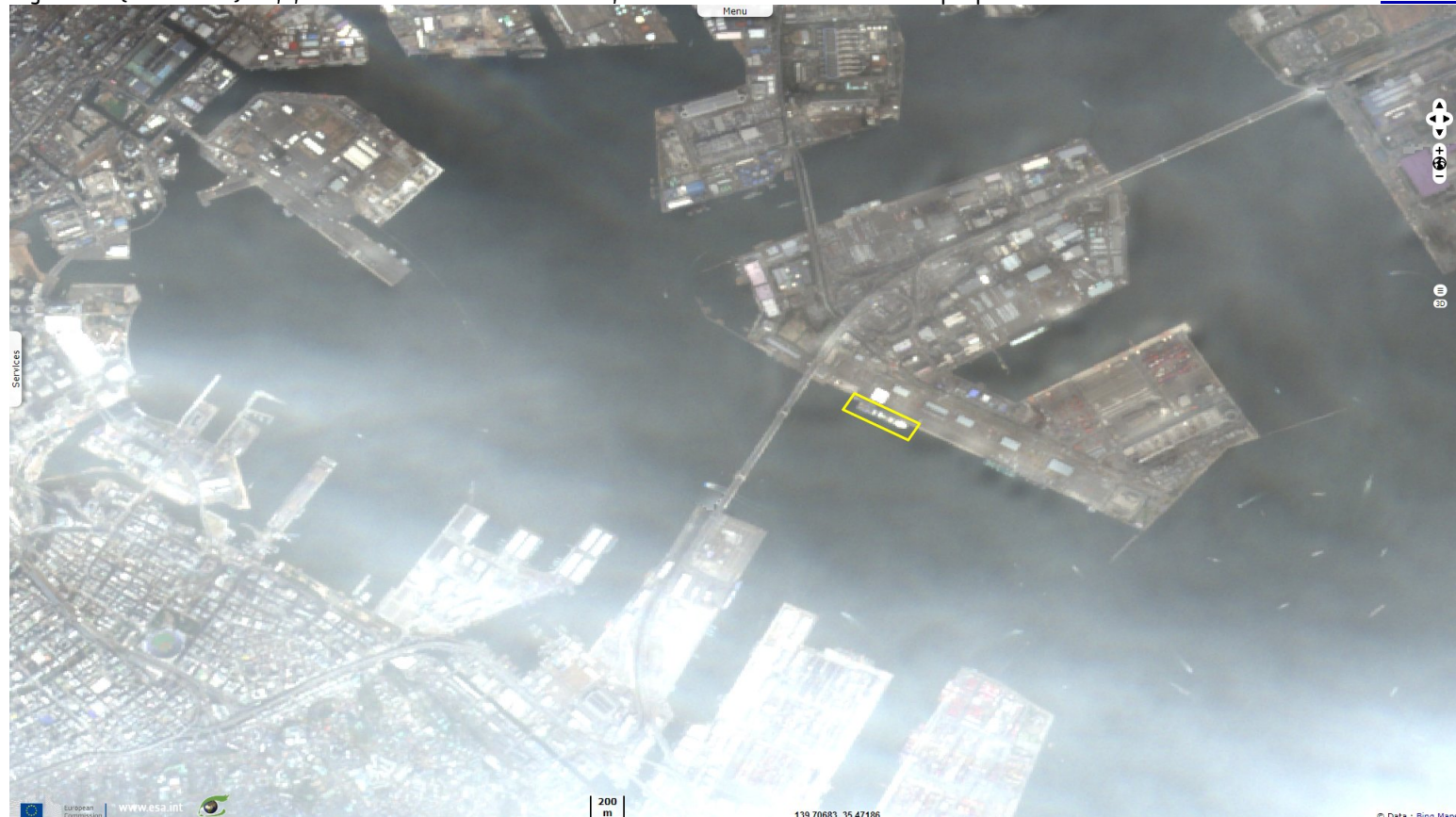
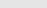


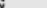
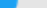

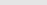
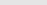
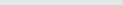
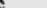
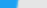



Fig. 4 - S2 (12.02.2020) - 4,3,2 natural colour - On 13.02.2020, it was announced a total of 218 people had been taken ashore for treatment. [2D view](#)



*The views expressed herein can in no way be taken to reflect the official opinion of the European Space Agency or the European Union.
Contains modified Copernicus Sentinel data 2019, processed by VisioTerra.*

More on European Commission space:							
More on ESA:				S-1 website	S-2 website	S-3 website	
More on Copernicus program:				Scihub portal	Cophub portal	Inthub portal	Colhub portal
More on VisioTerra:				Sentinel Vision Portal	Envisat+ERS portal	Swarm+GOCE portal	CryoSat portal