

10 miners killed by Carmen Copper Mine landslide, Philippines

Sentinel-2 MSI acquired on 16 March 2019 at 02:23:29 UTC
Sentinel-1 CSAR IW acquired on 12 December 2020 at 21:31:34 UTC
Sentinel-2 MSI acquired on 15 December 2020 at 02:23:19 UTC
Sentinel-1 CSAR IW acquired on 24 December 2020 at 21:31:34 UTC
Sentinel-2 MSI acquired on 29 January 2021 at 02:23:31 UTC

Author(s): Sentinel Vision team, VisioTerra, France - syp@visioterra.fr

Keyword(s): Mine, landslide, geohazard, emergency, man made disaster, Philippines

Fig. 1 - S2 (15.12.2020) - Philippines was hit by Tropical Storm Krovanh (also known as Tropical Storm Vicky) at the end of December.

[2D view](#)

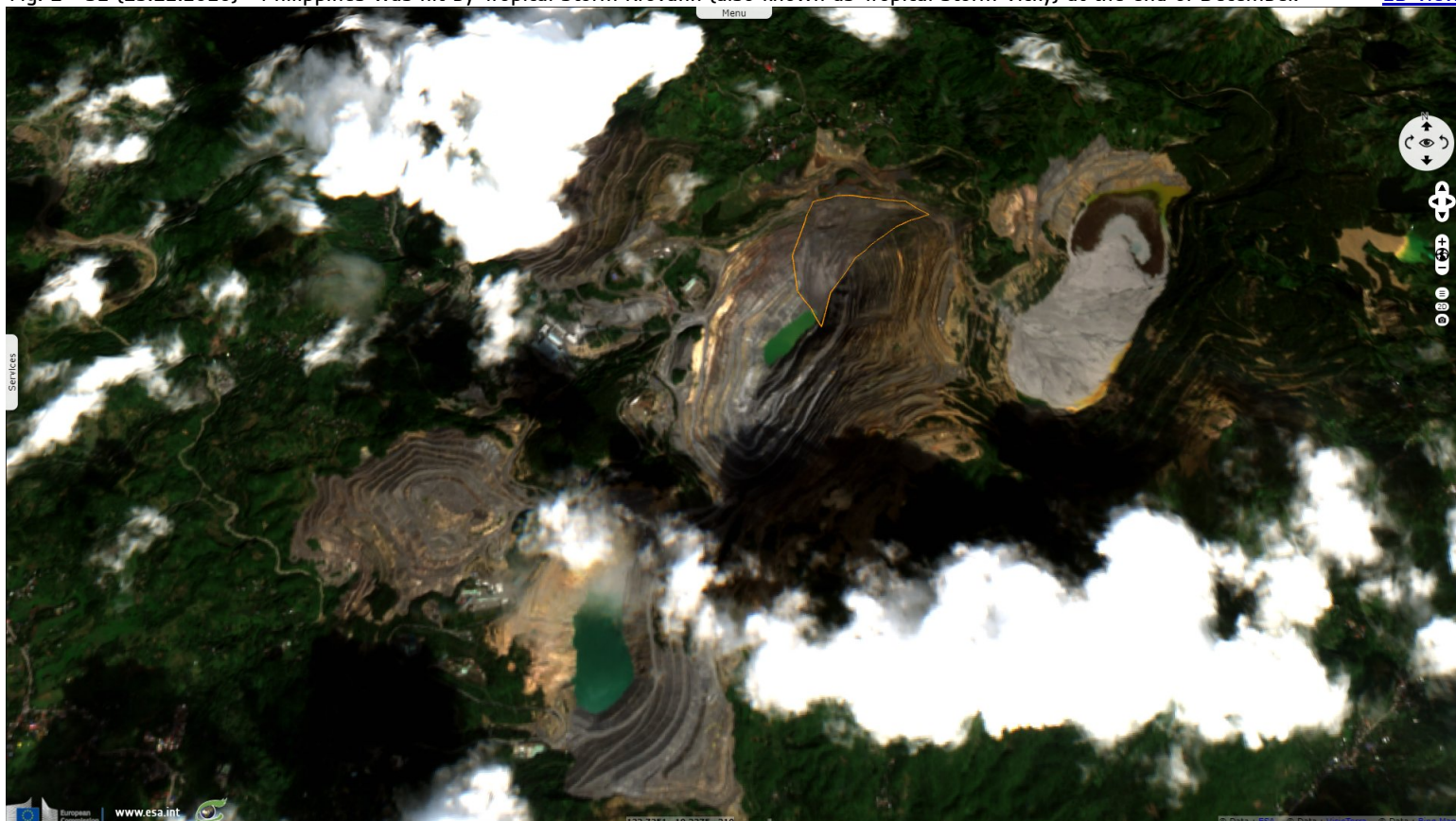


Fig. 2 - S2 (29.01.2021) - Following this, a very large landslide occurred at the Carmen Copper Mine on 21 December 2020.

[2D view](#)

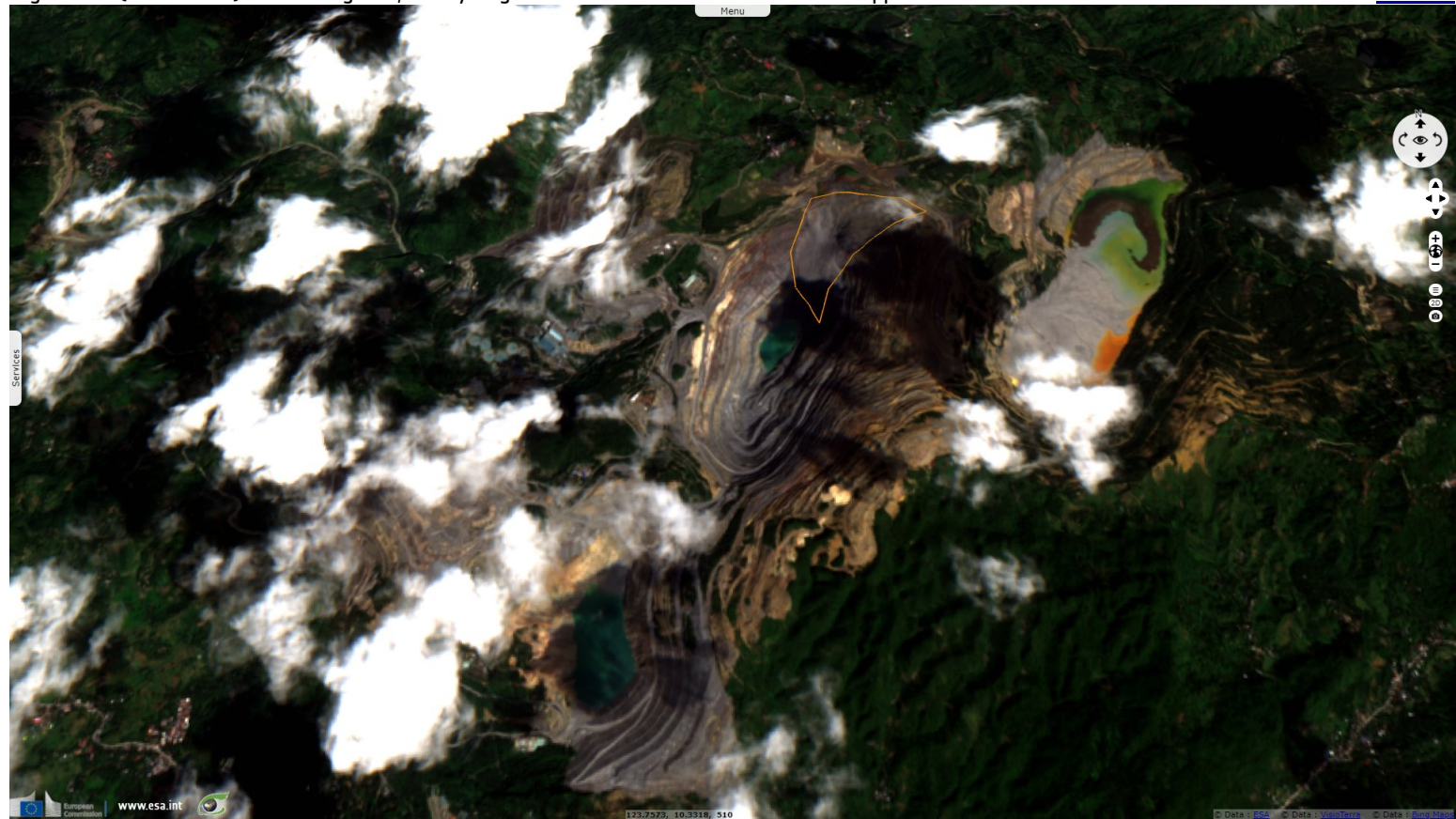


Fig. 3 - S1 (12.12.2020) - The northern end of the slope failed, most the material had a large fall height and it entered the lake with high energy.

[2D view](#)

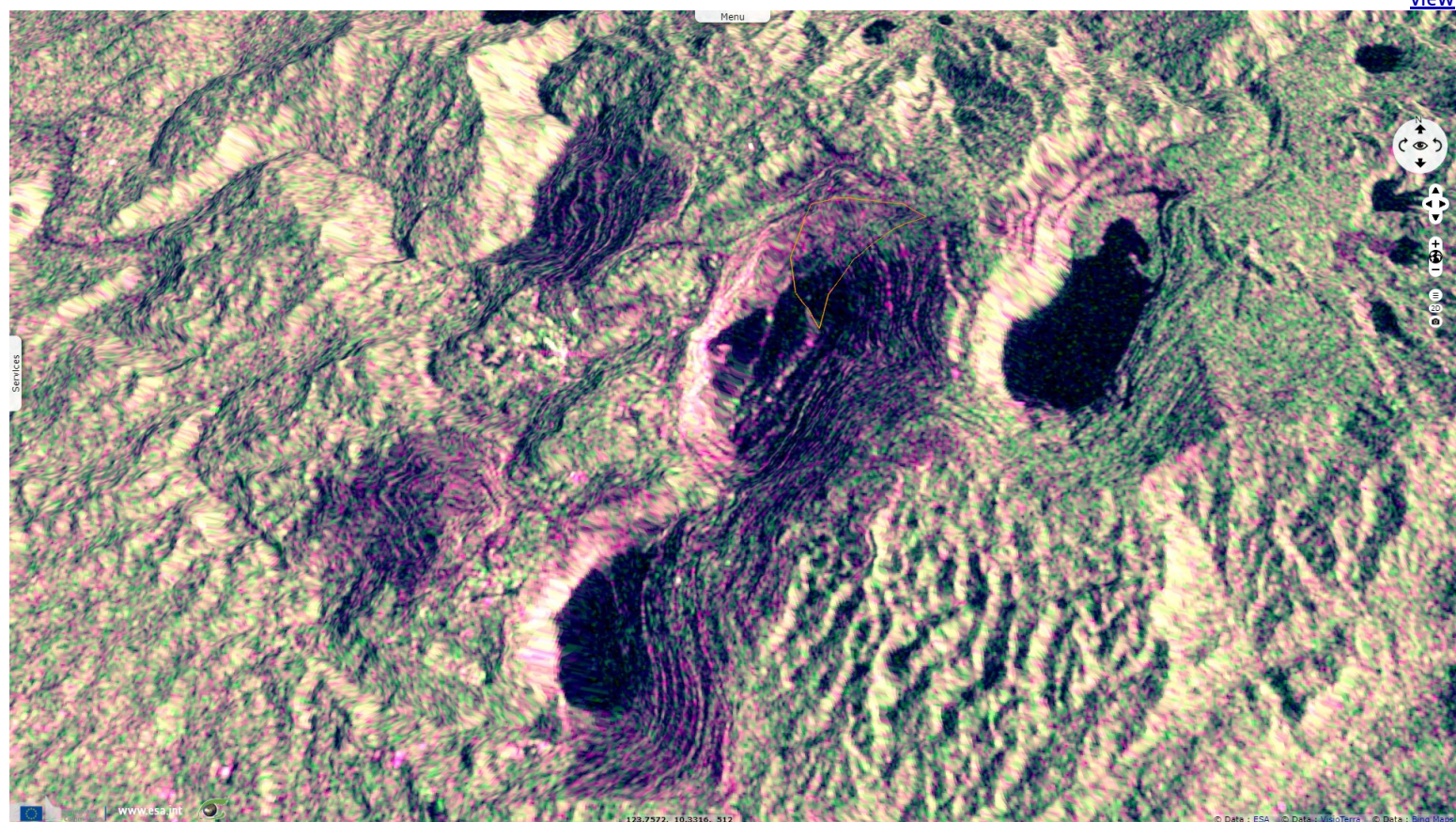
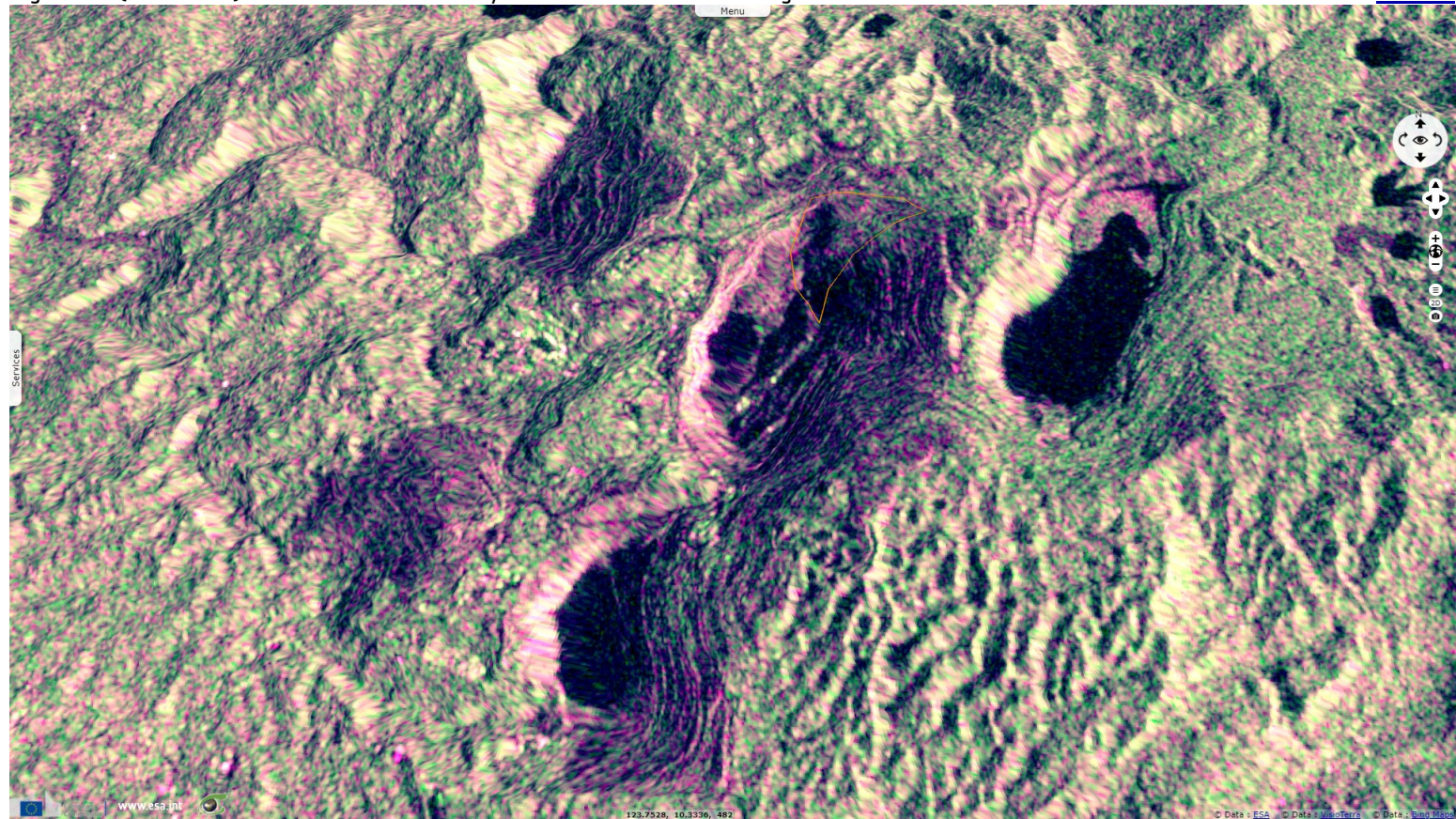



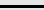
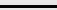
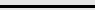








Fig. 4 - S1 (24.12.2020) - 10 miners were killed by the landslide and the ensuing wave.

[2D view](#)



*The views expressed herein can in no way be taken to reflect the official opinion of the European Space Agency or the European Union.
Contains modified Copernicus Sentinel data 2021, processed by VisioTerra.*

More on European Commission space:							
More on ESA:				S-1 website	S-2 website	S-3 website	
More on Copernicus program:				Scihub portal	Cophub portal	Inthub portal	Colhub portal
More on VisioTerra:				Sentinel Vision Portal	Envisat+ERS portal	Swarm+GOCE portal	CryoSat portal