

Multiple floods affect west and north of Australia

Sentinel-1 CSAR IW acquired on 08 December 2022 from 20:48:35 to 20:49:00 UTC

...

Sentinel-3 OLCI FR acquired on 09 January 2023 from 00:57:51 to 01:40:01 UTC

Sentinel-3 OLCI FR acquired on 11 January 2023 from 00:44:39 to 00:47:39 UTC

Sentinel-1 CSAR IW acquired on 15 January 2023 at 20:32:20 UTC

Author(s): Sentinel Vision team, VisioTerra, France - svp@visioterra.fr

Keyword(s): Emergency, natural disaster, precipitations, flooding, river, hydrology, Australia



[2D Layerstack](#)

Fig. 1 - S3 OLCI (09-11.01.2023) - Ex-Tropical Cyclone Ellie brought heavy rain to coastal parts of western and northern Australia in Dec. 2022. [2D view](#)

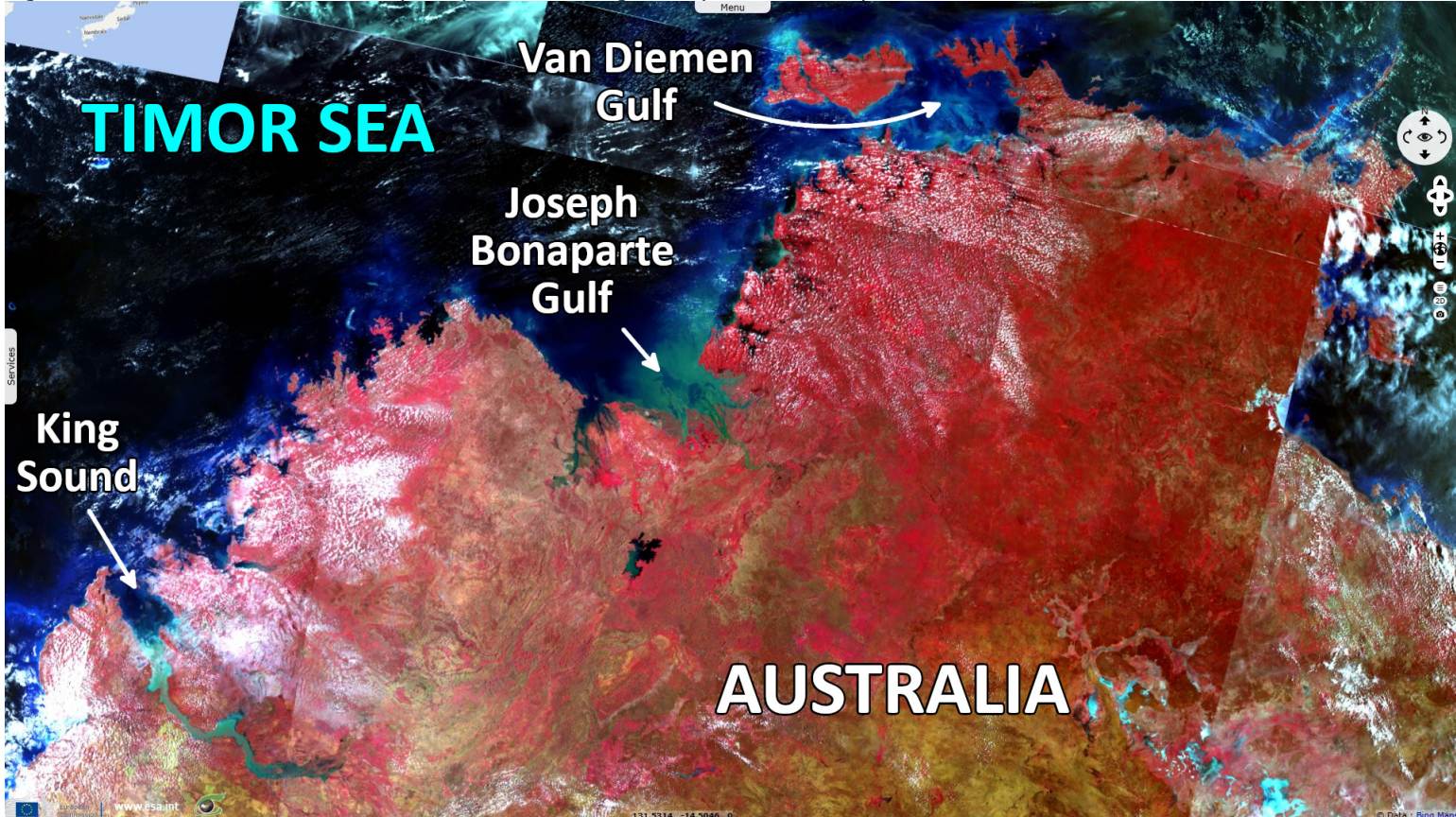


Fig. 2 - S1 (11.12.2022; 04.01.2023) - In the Kimberley Region, the Fitzroy River rose from 1 m to a record 15.8 m in 5 days. [3D view](#) [3D view](#) [3D view](#)

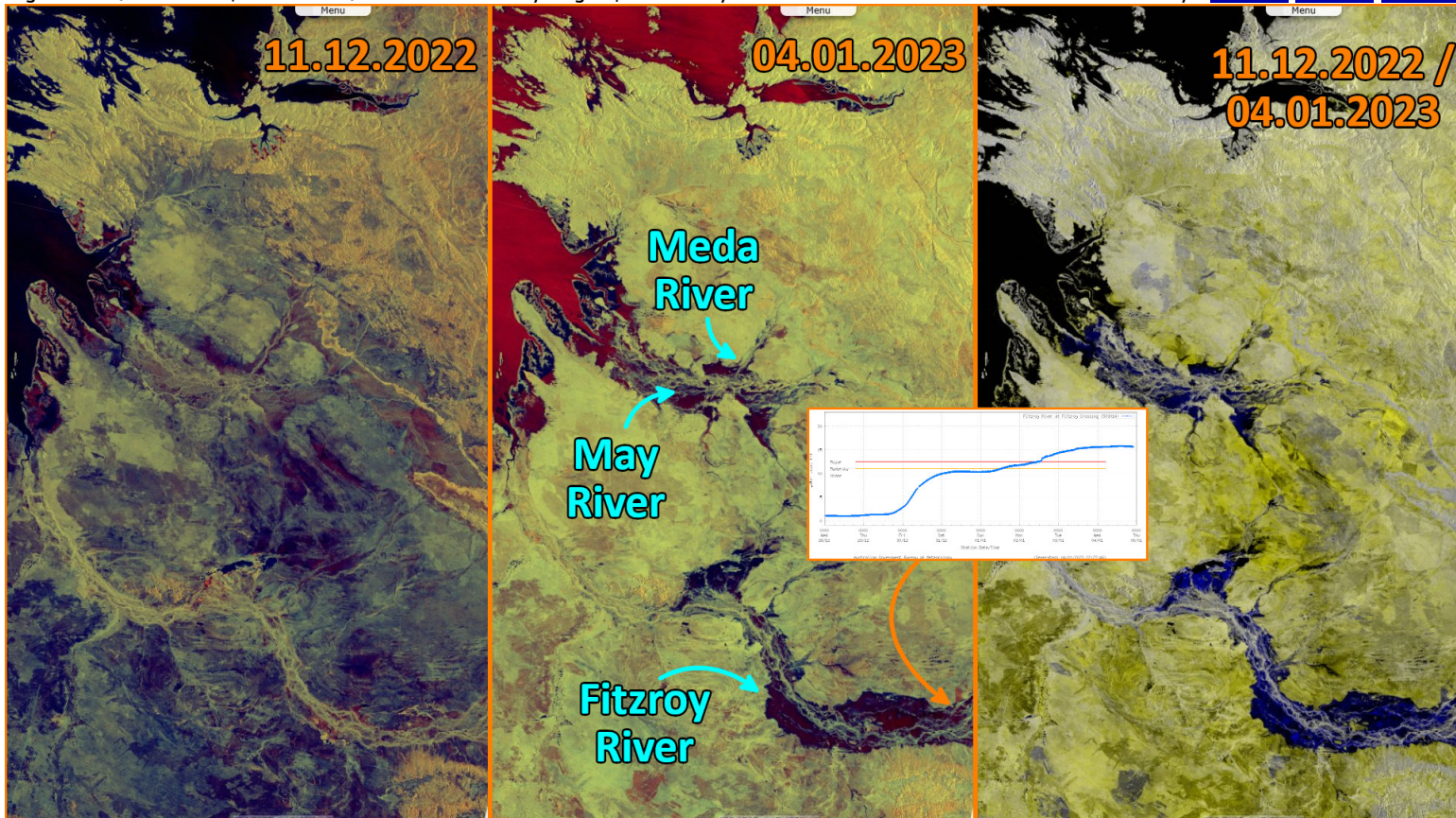


Fig. 3 - S1 (08-15.12.2022; 22.12.2022-15.01.2023) - The north-west coast of the state of Northern Territory was also affected.

[3D view](#)

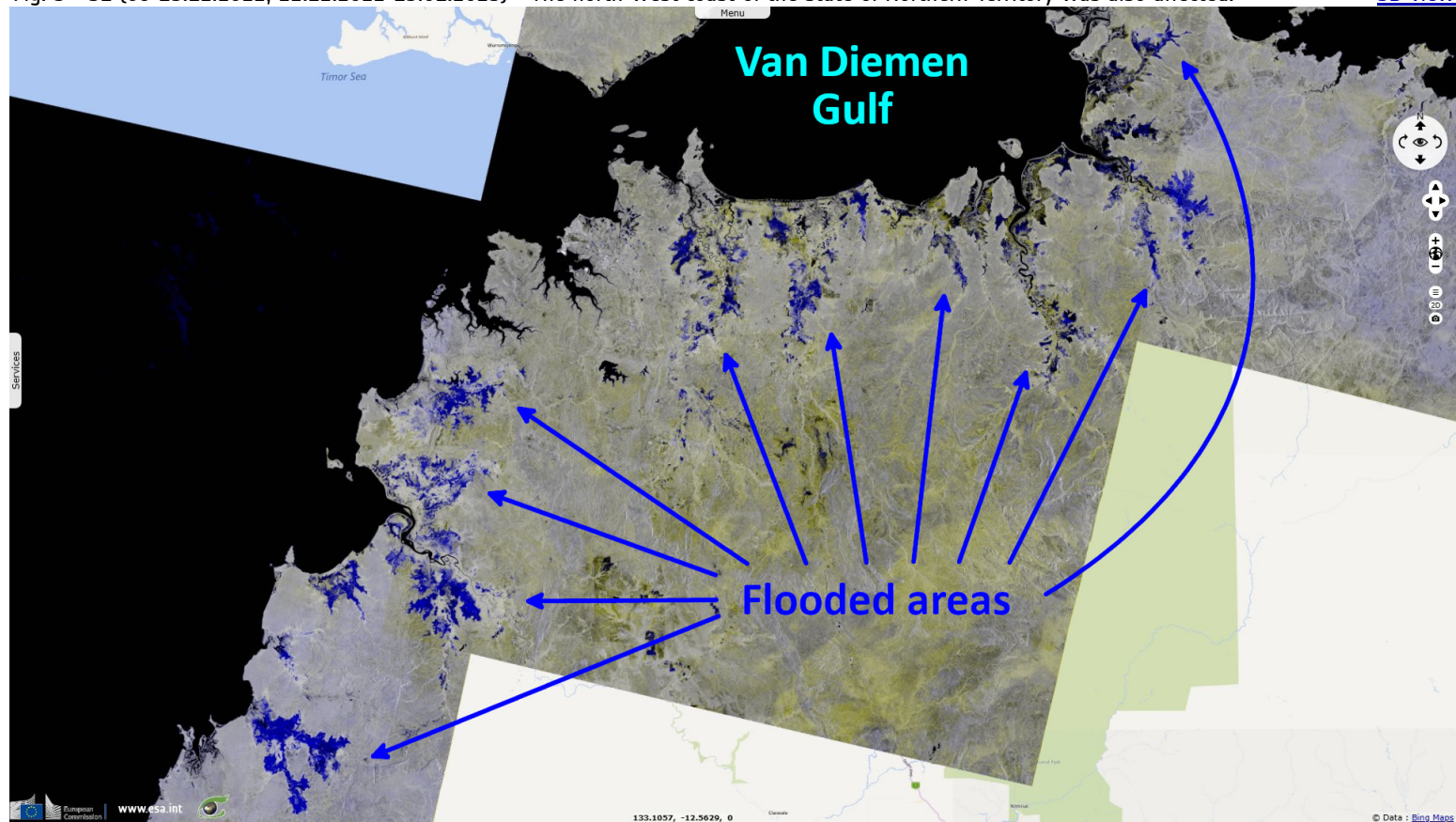
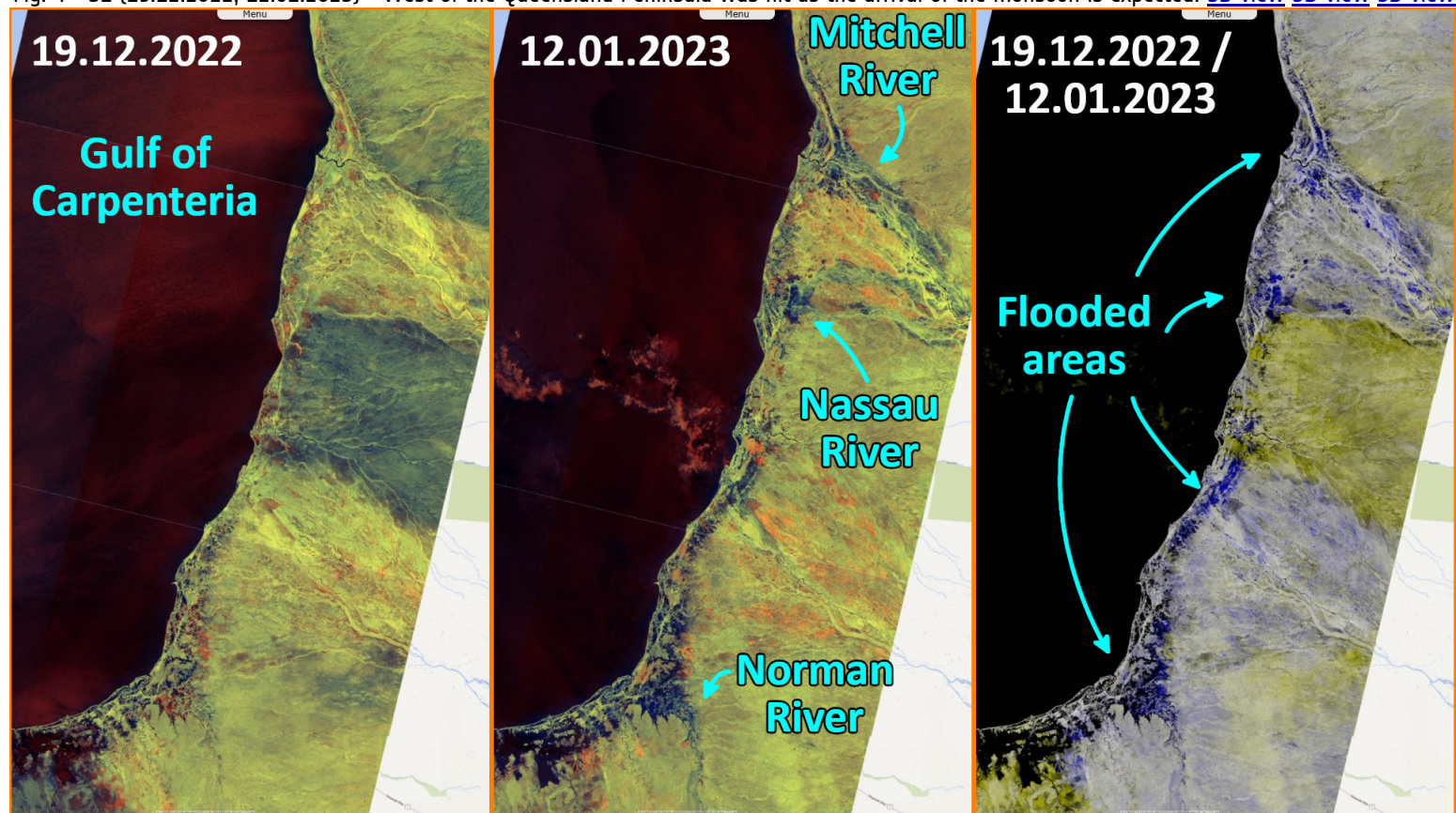


Fig. 4 - S1 (19.12.2022; 12.01.2023) - West of the Queensland Peninsula was hit as the arrival of the monsoon is expected. [3D view](#) [3D view](#) [3D view](#)



The views expressed herein can in no way be taken to reflect the official opinion of the European Space Agency or the European Union.
Contains modified Copernicus Sentinel data 2023, processed by VisioTerra.

More on European Commission space:						
More on ESA:				S-1 website	S-2 website	S-3 website
More on Copernicus program:				SciHub portal	CopHub portal	Inthub portal
More on VisioTerra:				Sentinel Vision Portal	Envisat+ERS portal	Swarm+GOCE portal
				CryoSat portal		