

Le Lignon, largest building in Europe, Switzerland

Sentinel-2 MSI acquired on 05 October 2018 at 10:40:21 UTC
Sentinel-2 MSI acquired on 22 February 2019 at 10:40:41 UTC

...
Sentinel-1 CSAR IW acquired on 03 June 2020 at 05:42:58 UTC
Sentinel-1 CSAR IW acquired on 30 April 2021 at 17:31:40 UTC

Author(s): Sentinel Vision team, VisioTerra, France - svp@visioterra.fr

Keyword(s): Urban planning, Switzerland

[2D Layerstack](#)

Fig. 1 - S2 (22.02.2019) - The city of Vernier, canton of Geneva, Switzerland, borders the Rhone, between the French Jura & Prealps.

[2D view](#)



Fig. 2 - S2 (05.10.2018) - It is where lies Le Lignon urban development, built between 1964 & 1966 and consisting of three large buildings.

[2D view](#)



Fig. 3 - S1 (18.04 - 12.05.2021) - Architect George Addor imagined a single building forming a 1065m long broken line made of through flats. [2D view](#)

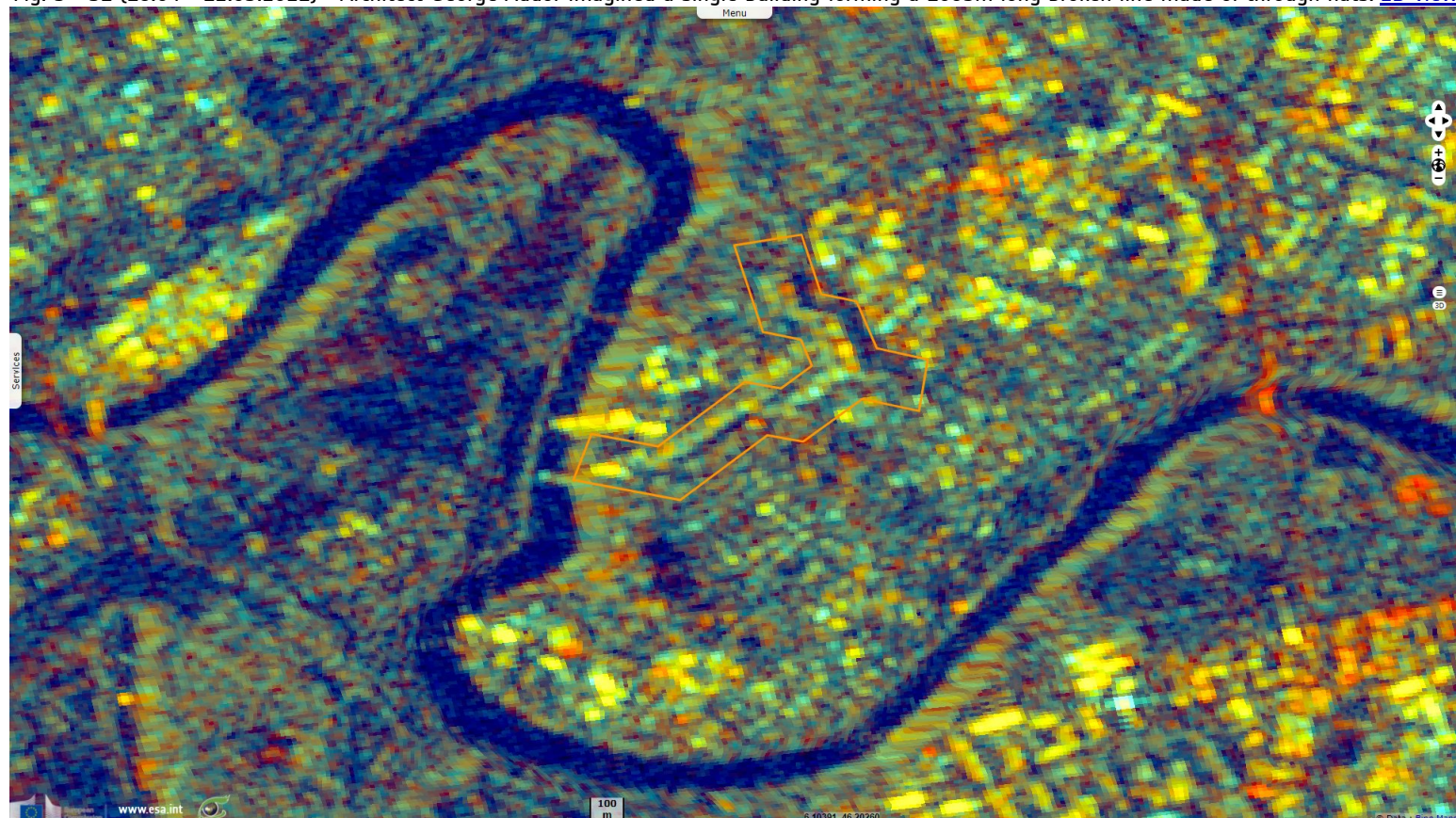
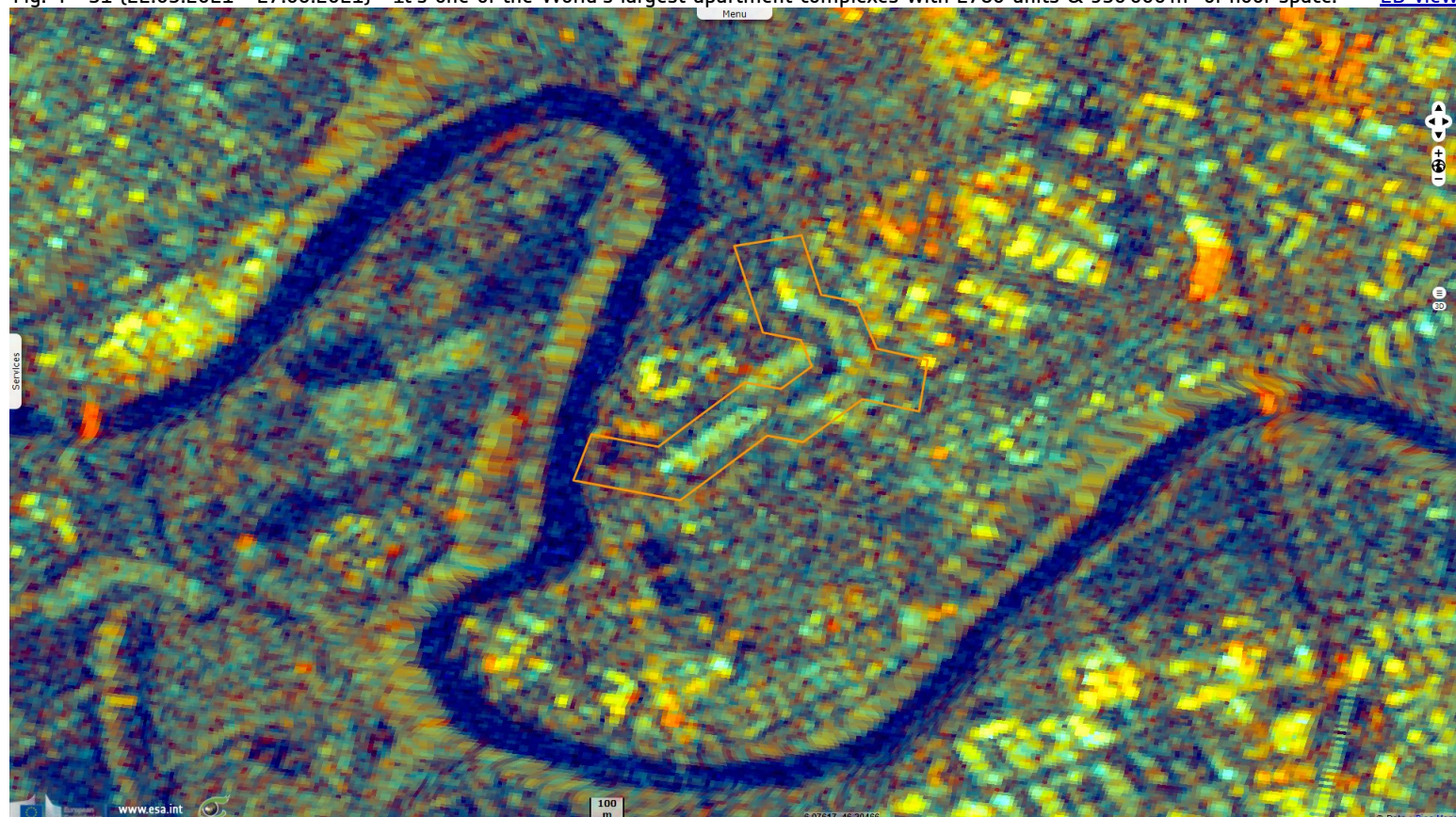
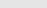


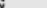
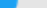




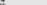
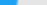



Fig. 4 - S1 (22.05.2021 - 27.06.2021) - It's one of the World's largest apartment complexes with 2780 units & 930 000 m² of floor space. [2D view](#)



*The views expressed herein can in no way be taken to reflect the official opinion of the European Space Agency or the European Union.
Contains modified Copernicus Sentinel data 2021, processed by VisioTerra.*

More on European Commission space:							
More on ESA:				S-1 website	S-2 website	S-3 website	
More on Copernicus program:				Scihub portal	Cophub portal	Inthub portal	Colhub portal
More on VisioTerra:				Sentinel Vision Portal	Envisat+ERS portal	Swarm+GOCE portal	CryoSat portal