

A months-long flood affects South Sudan

Sentinel-1 CSAR IW acquired on 22 May 2021 from 03:33:47 to 03:34:37 UTC

...

Sentinel-1 CSAR IW acquired on 25 August 2021 from 03:40:54 to 03:42:34 UTC

Sentinel-1 CSAR IW acquired on 12 October 2021 from 03:40:56 to 03:42:36 UTC

Sentinel-1 CSAR IW acquired on 12 December 2021 from 03:33:53 to 03:34:43 UTC

Author(s): Sentinel Vision team, VisioTerra, France - svp@visioterra.fr

Keyword(s): Flooding, river, hydrology, season, rainfall, precipitations, South Sudan, White Nile

[2D Layerstack](#)

Fig. 1 - S1 (27.04.2021, 22 & 26.05.2021) - The White Nile flows across South Sudan and floods annually since 2019 due to heavy rains.

[2D view](#)

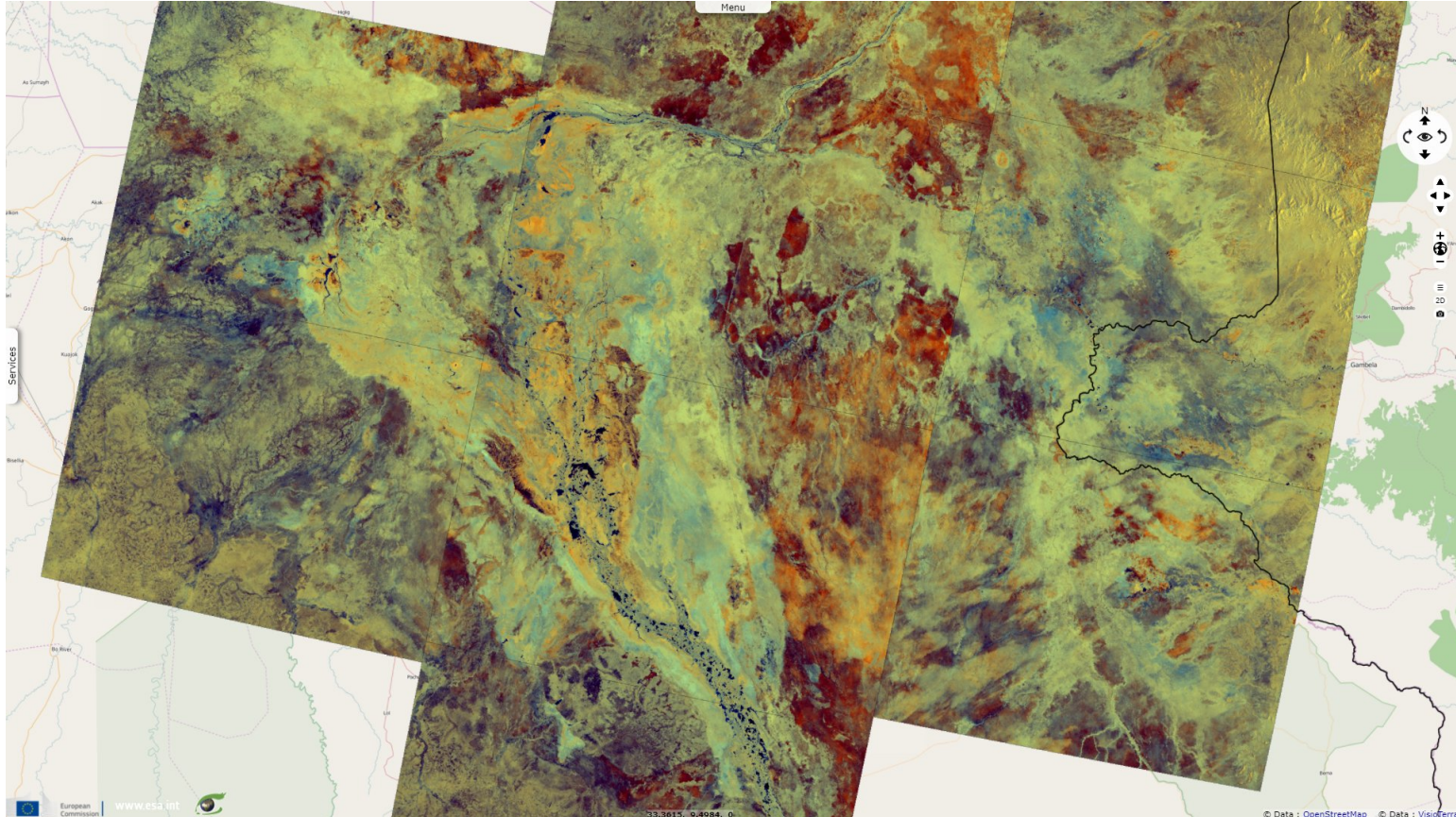


Fig. 2 - S1 (20, 21, 25.07.2021) - View two months later as the flood had started, visible in orange areas as vegetation is partially immersed.

[3D view](#)

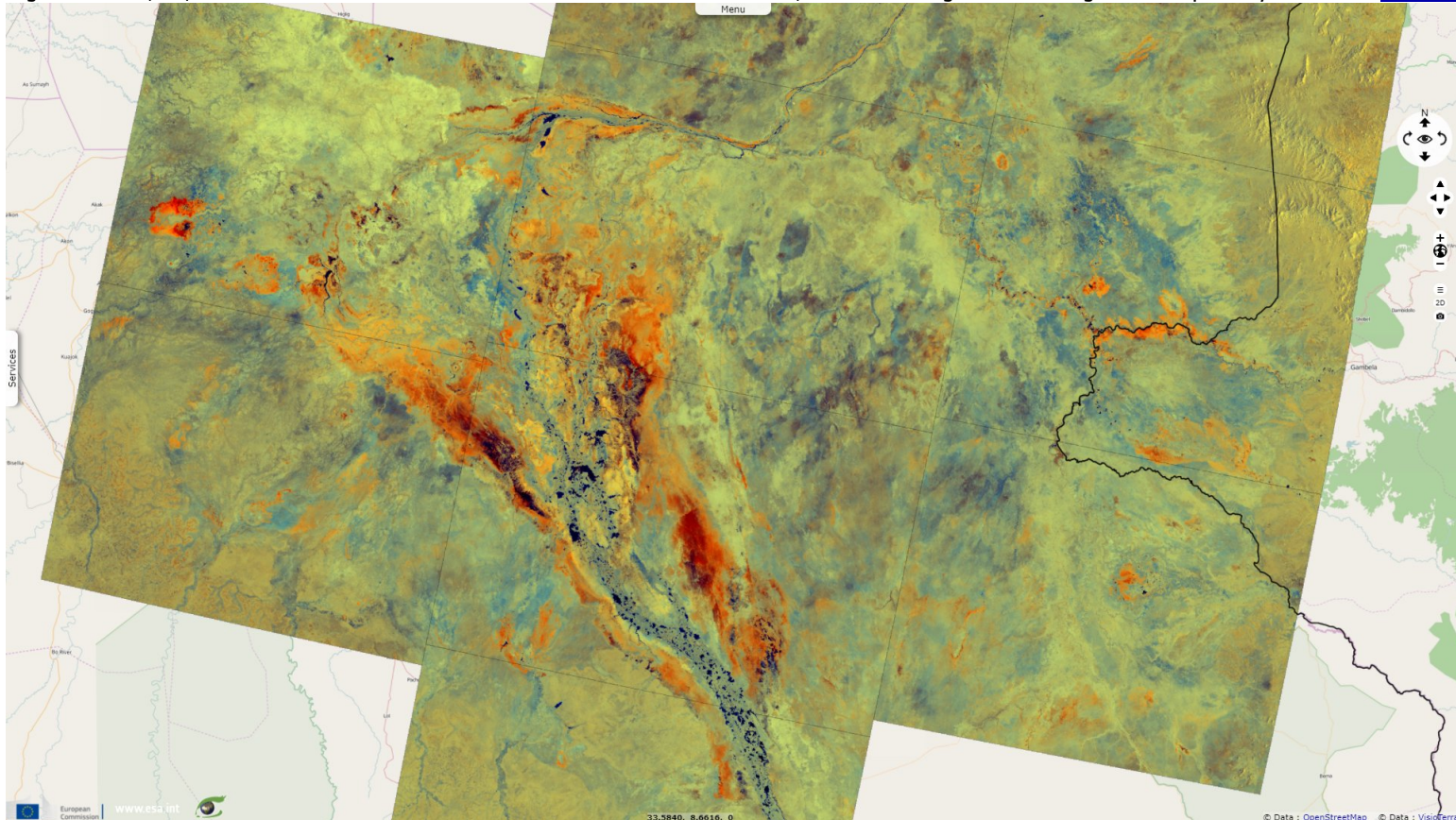


Fig. 3 - S1 (25, 26 & 30.08.2021) - The flood worsened, in August, the rainy season in South Sudan typically runs from April-November. [3D view](#)

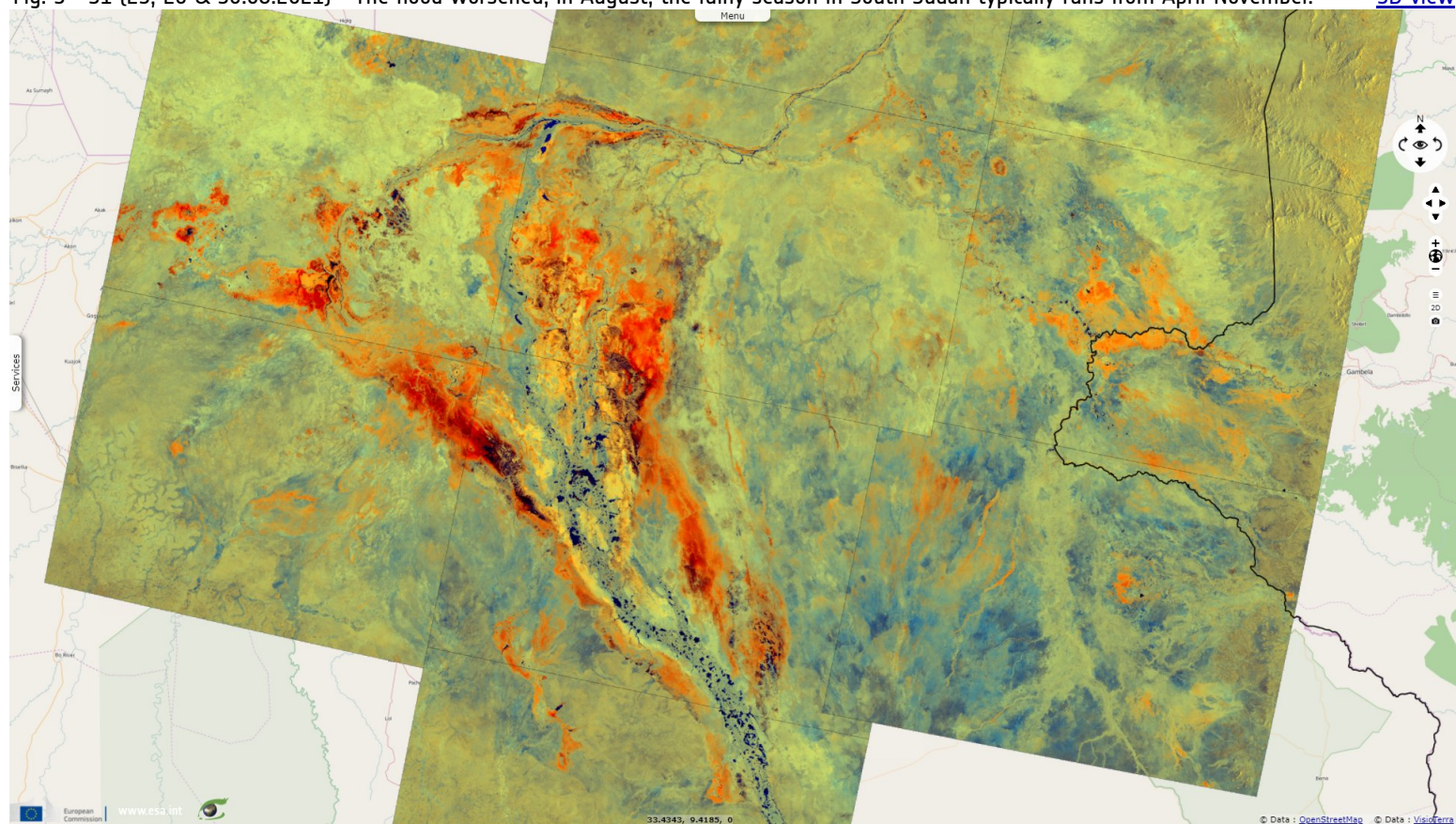


Fig. 4 - S1 (07, 11, 12.10.2021) - The 2021 rainy season started in May and is expected to last until February 2022. [3D view](#)

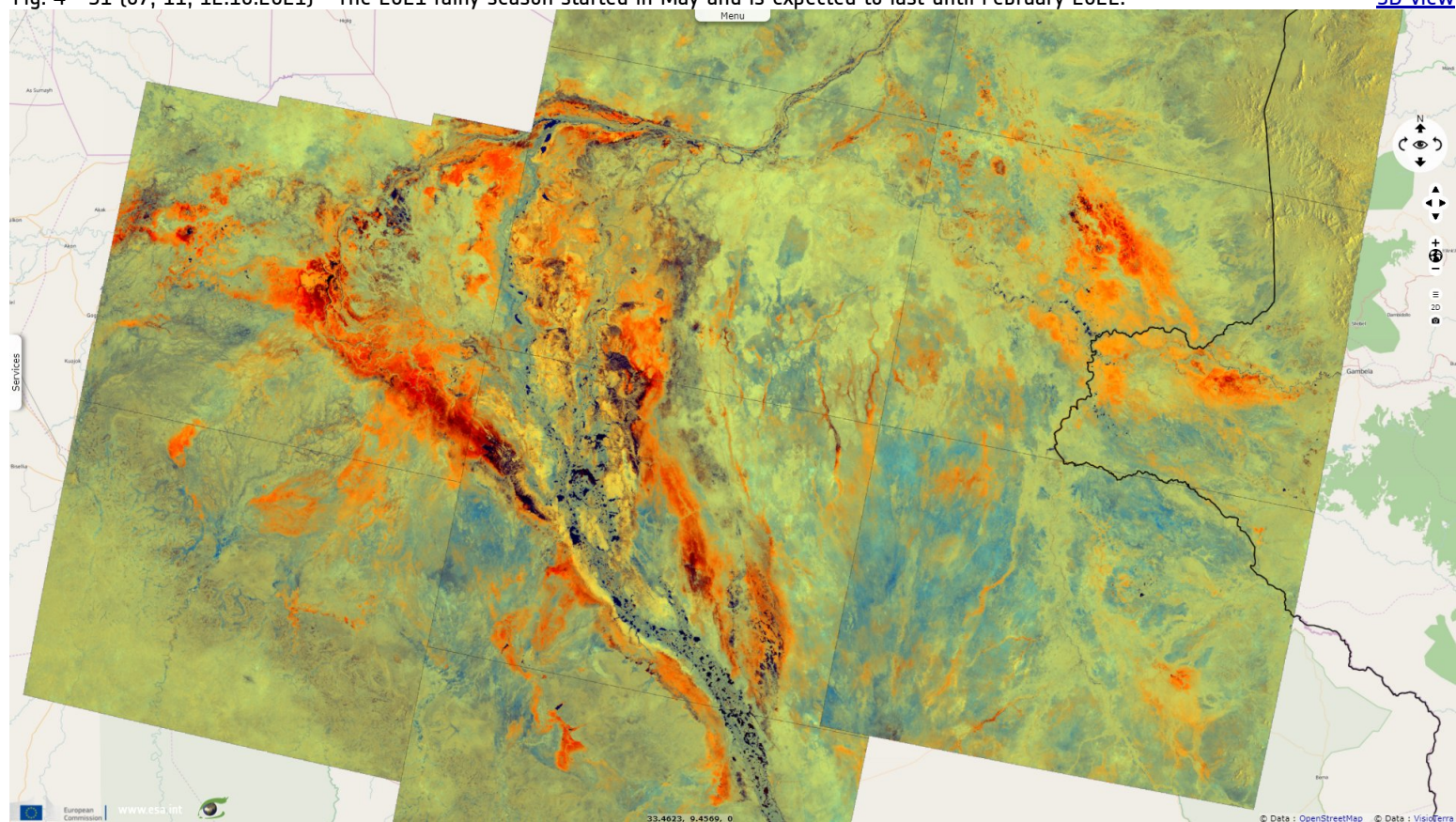


Fig. 5 - S1 (04, 05, 06.11.2021) - In 2021, 809 000 people were affected by the overflow of the Nile, Lol & Sobat rivers and Sudd wetlands. [3D view](#)

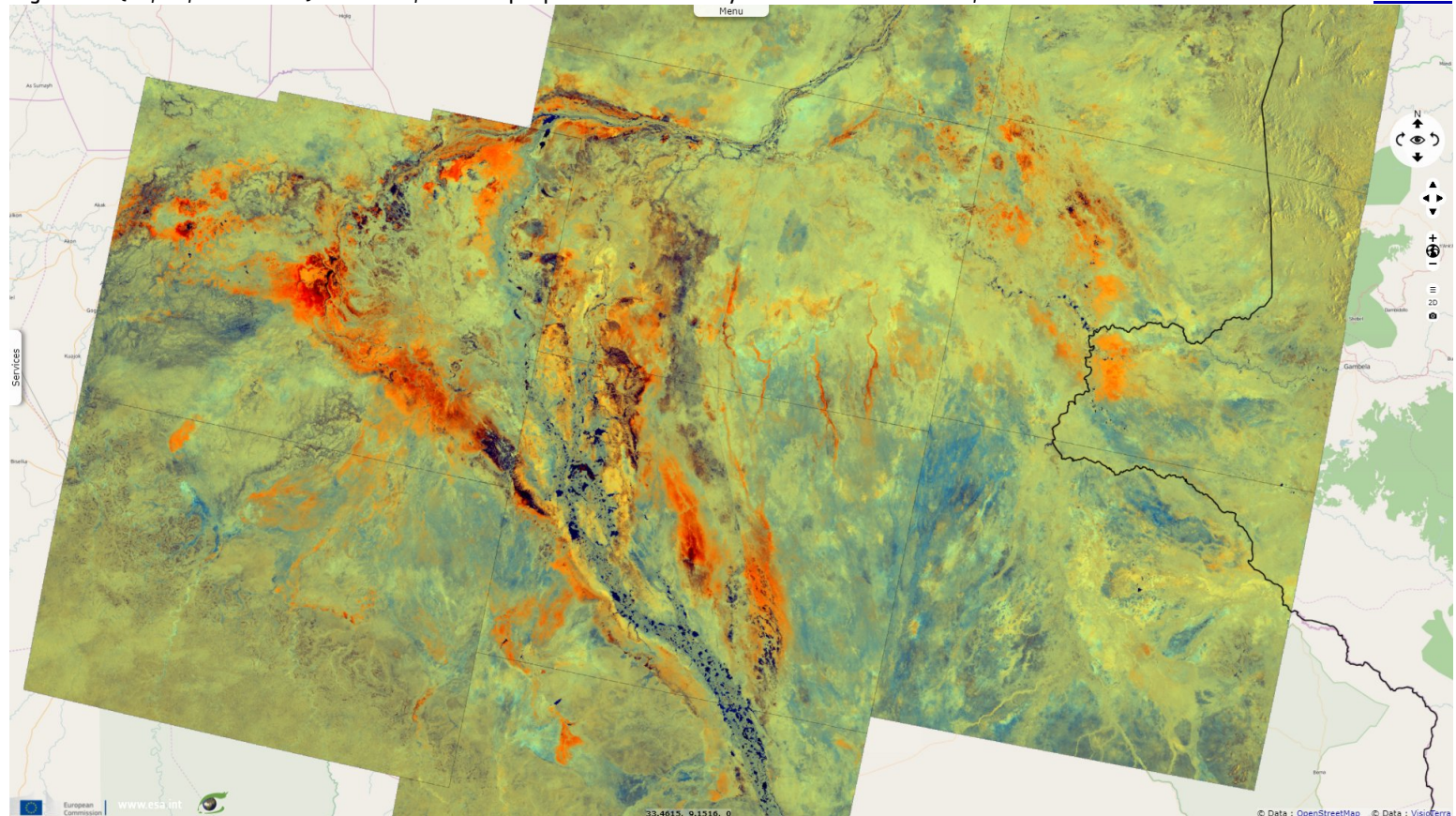
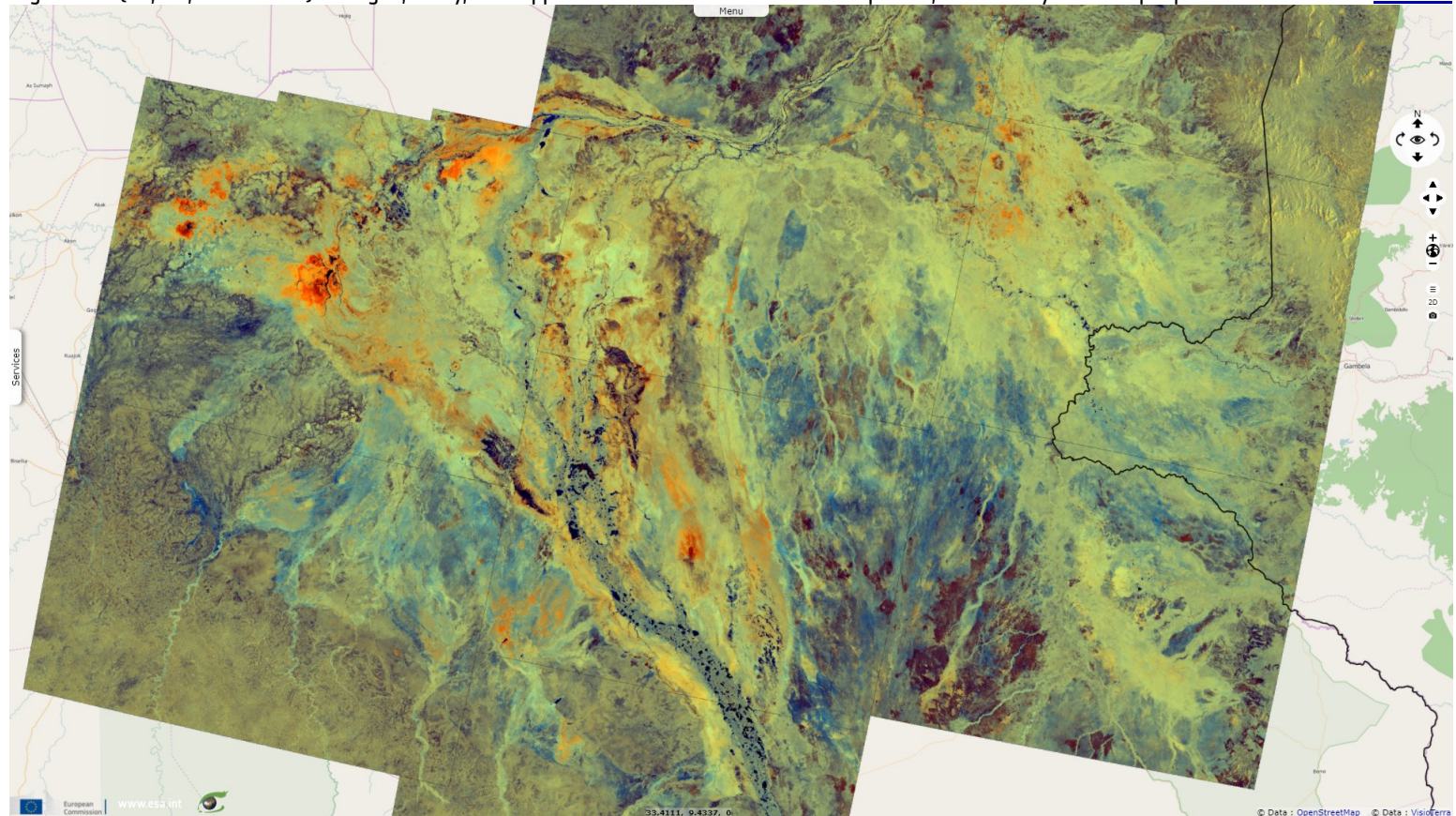














Fig. 6 - S1 (10, 11, 12.12.2021) - Jonglei, Unity, and Upper Nile states were the worst impacted, with nearly 75% of people affected. [3D view](#)



*The views expressed herein can in no way be taken to reflect the official opinion of the European Space Agency or the European Union.
Contains modified Copernicus Sentinel data 2021, processed by VisioTerra.*

More on European Commission space:							
More on ESA:				S-1 website	S-2 website	S-3 website	
More on Copernicus program:				SciHub portal	Cophub portal	Inthub portal	Colhub portal
More on VisioTerra:				Sentinel Vision Portal	Envisat+ERS portal	Swarm+GOCE portal	CryoSat portal