

# Dutch stars

Sentinel-1 CSAR IW acquired on 10 September 2017 at 05:50:05 UTC

Sentinel-1 CSAR IW acquired on 26 January 2018 at 05:49:12 UTC

Sentinel-1 CSAR IW acquired on 01 February 2018 at 05:50:02 UTC

Sentinel-2 MSI acquired on 06 May 2018 at 10:50:29 UTC

Author(s): Sentinel Vision team, VisioTerra, France - [svp@visioterra.fr](mailto:svp@visioterra.fr)

Keyword(s): Land, urban planing, canals, security



[2D Layerstack](#)

Fig. 1 - S2 (06.05.2018) - 4,8,2 colour composite - Imbrication of star-shaped defenses in Naarden bastion fort near Amsterdam.

[2D view](#)

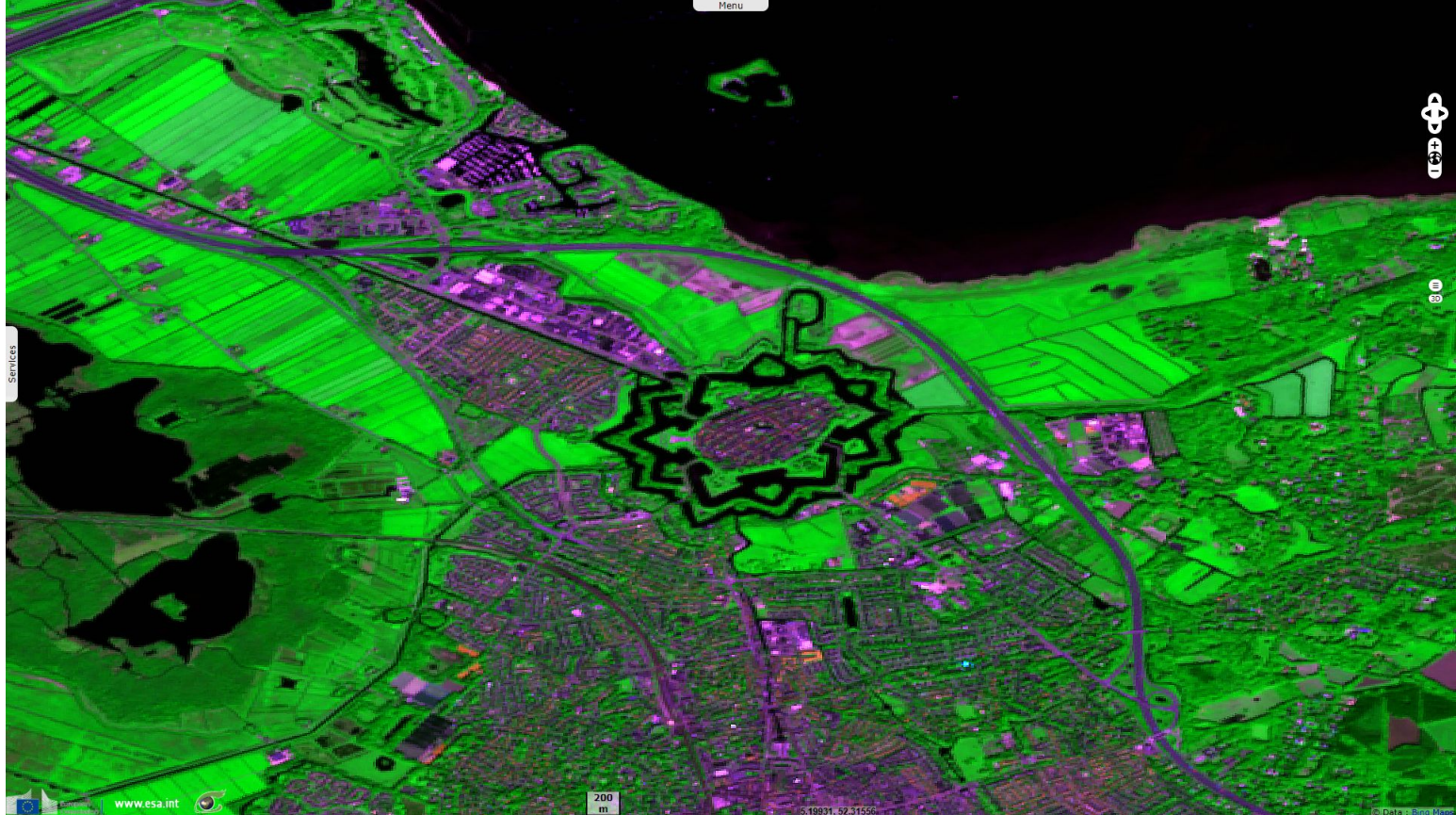


Fig. 2 - S1 (mean of 3 scenes) - vv,vh,ndi(vh,vv) colour composite - Its star shaped is typical of renaissance to 18th century fortifications.

[2D view](#)

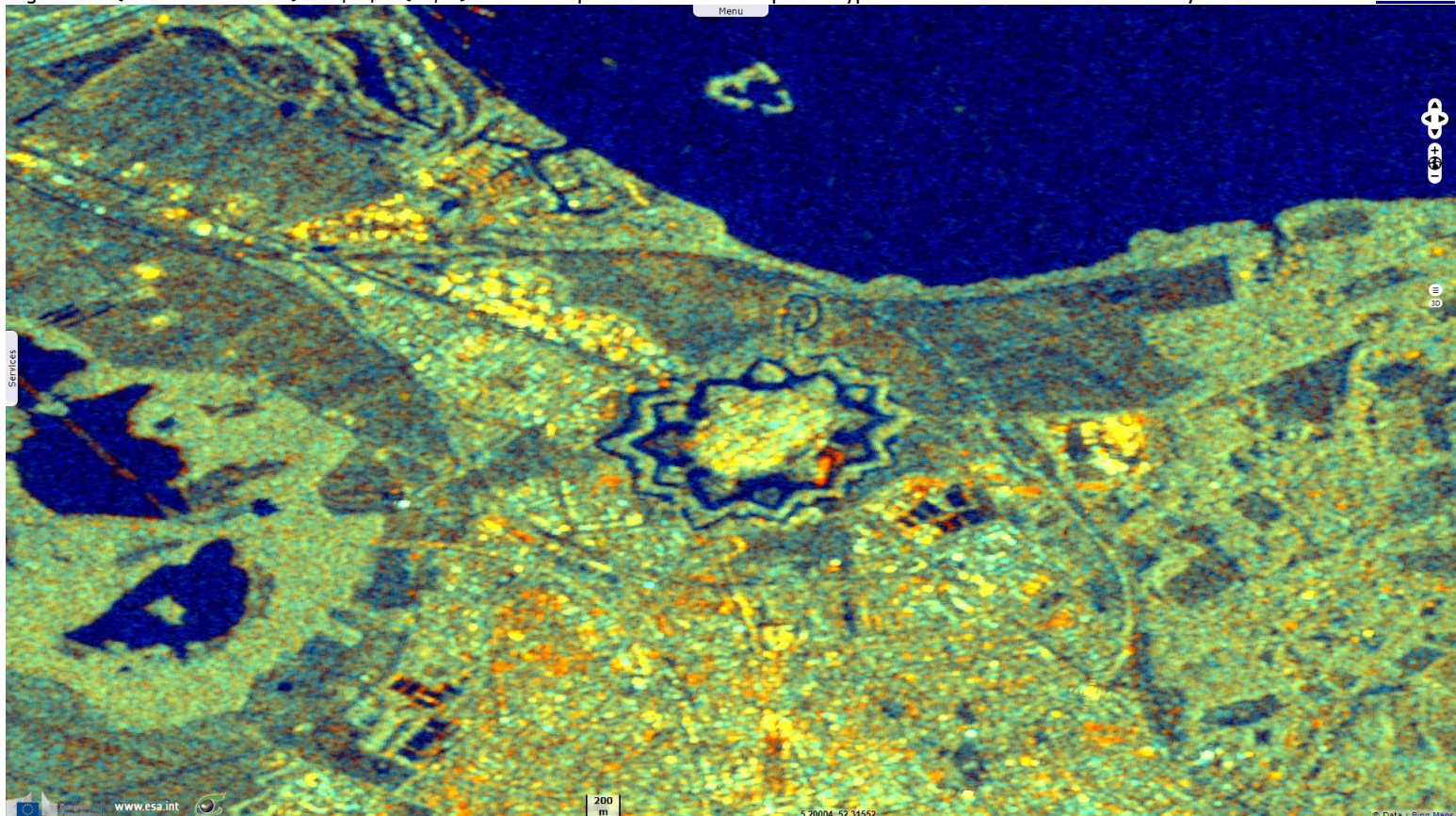


Fig. 3 - 4,8,2 colour composite - Willemstad (Moerdijk), south-east of the Netherlands.

[2D view](#)

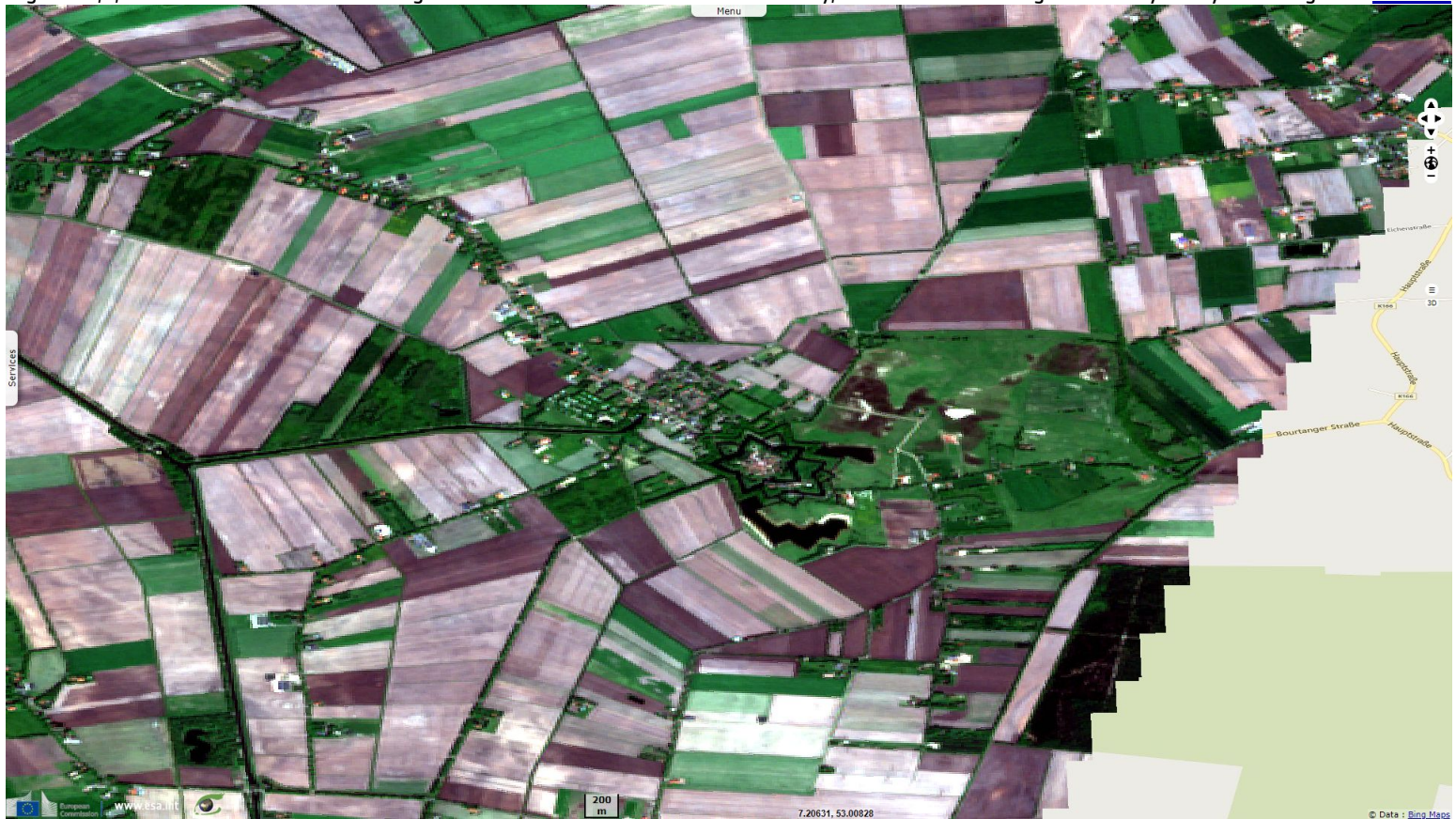


Fig. 4 - 4,8,2 colour composite - Clever use of canals near Coevorden at the border with Germany.

[2D view](#)



Fig. 5 - 4,3,2 natural colour - Fort Bourtange at the north of the border with Germany, forts with such design were very costly to besiege. [2D view](#)



*The views expressed herein can in no way be taken to reflect the official opinion of the European Space Agency or the European Union.  
Contains modified Copernicus Sentinel data 2019, processed by VisioTerra.*

More on European Commission space:							
More on ESA:				<a href="#">S-1 website</a>	<a href="#">S-2 website</a>	<a href="#">S-3 website</a>	
More on Copernicus program:				<a href="#">SciHub portal</a>	<a href="#">Cophub portal</a>	<a href="#">Inthub portal</a>	<a href="#">Colhub portal</a>
More on VisioTerra:				<a href="#">Sentinel Vision Portal</a>	<a href="#">Envisat+ERS portal</a>	<a href="#">Swarm+GOCE portal</a>	<a href="#">CryoSat portal</a>



Funded by the EU and ESA

SED-422-SentinelVision

