

Bayou submersion in Louisiana, United States

Sentinel-1 CSAR IW acquired on 15 March 2015 at 00:09:46 UTC

...

Sentinel-2 MSI acquired on 02 April 2021 at 16:28:29 UTC

Sentinel-2 MSI acquired on 05 April 2021 at 16:38:39 UTC

Sentinel-1 CSAR IW acquired on 12 July 2021 from 00:02:00 to 00:02:25 UTC

Author(s): Sentinel Vision team, VisioTerra, France - svp@visioterra.fr

Keyword(s): Coastal, wetland, swamp, dam, infrastructure, urban planning, subsidence, erosion, sedimentation, alluvium, biodiversity, Mississippi delta, USA



[2D Layerstack](#)

Fig. 1 - S1 (15 & 22.03.2015) - Radar image of the south-west lobe of the Mississippi delta in 2015, it is no longer active, the active lobe is at south-east.

[2D view](#)

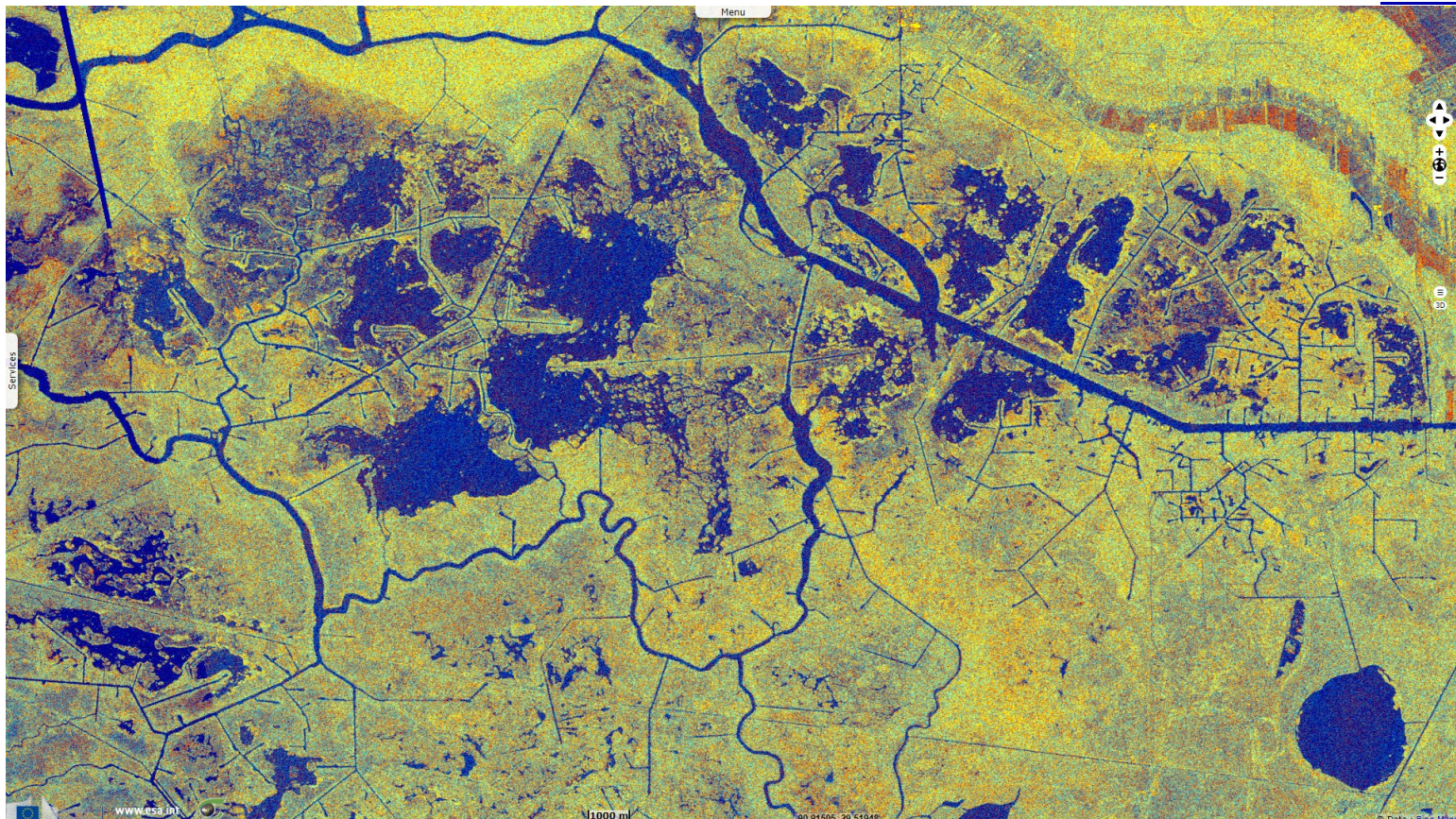


Fig. 2 - S1 (05 & 12.07.2021) - Most sediments are now blocked by dams upstream, causing the erosion of the bayou.

[2D view](#)

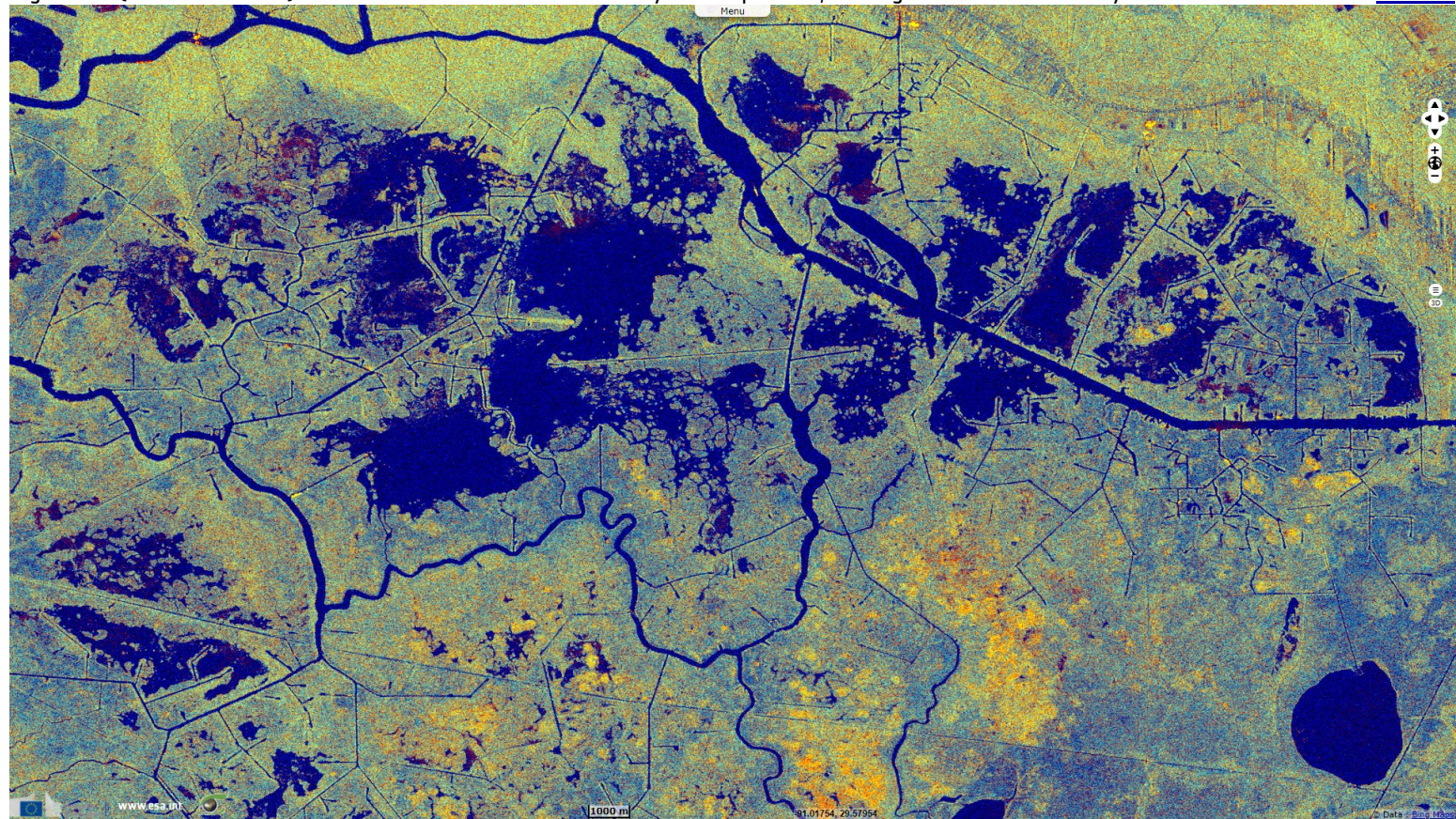


Fig. 3 - S1 (15 & 22.03.2015; 05 & 12.07.2021) - The brighter magenta surfaces near water were land areas in 2015 that became open water since.

[2D animation](#) [2D view](#)

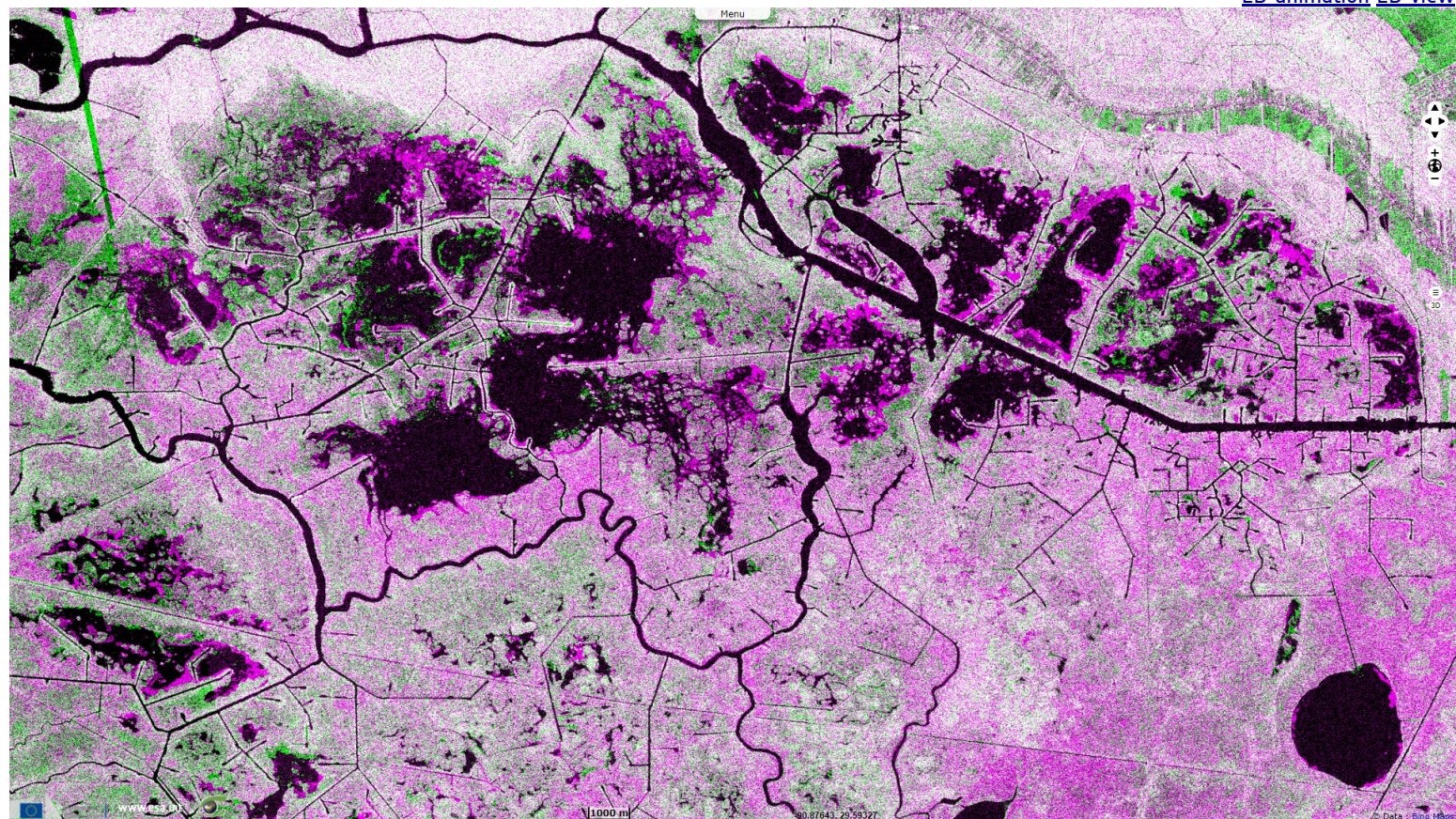


Fig. 4 - L5 (06.04.1984) - 1984 image showing several villages near the southern extremity of the delta.

[2D view](#)

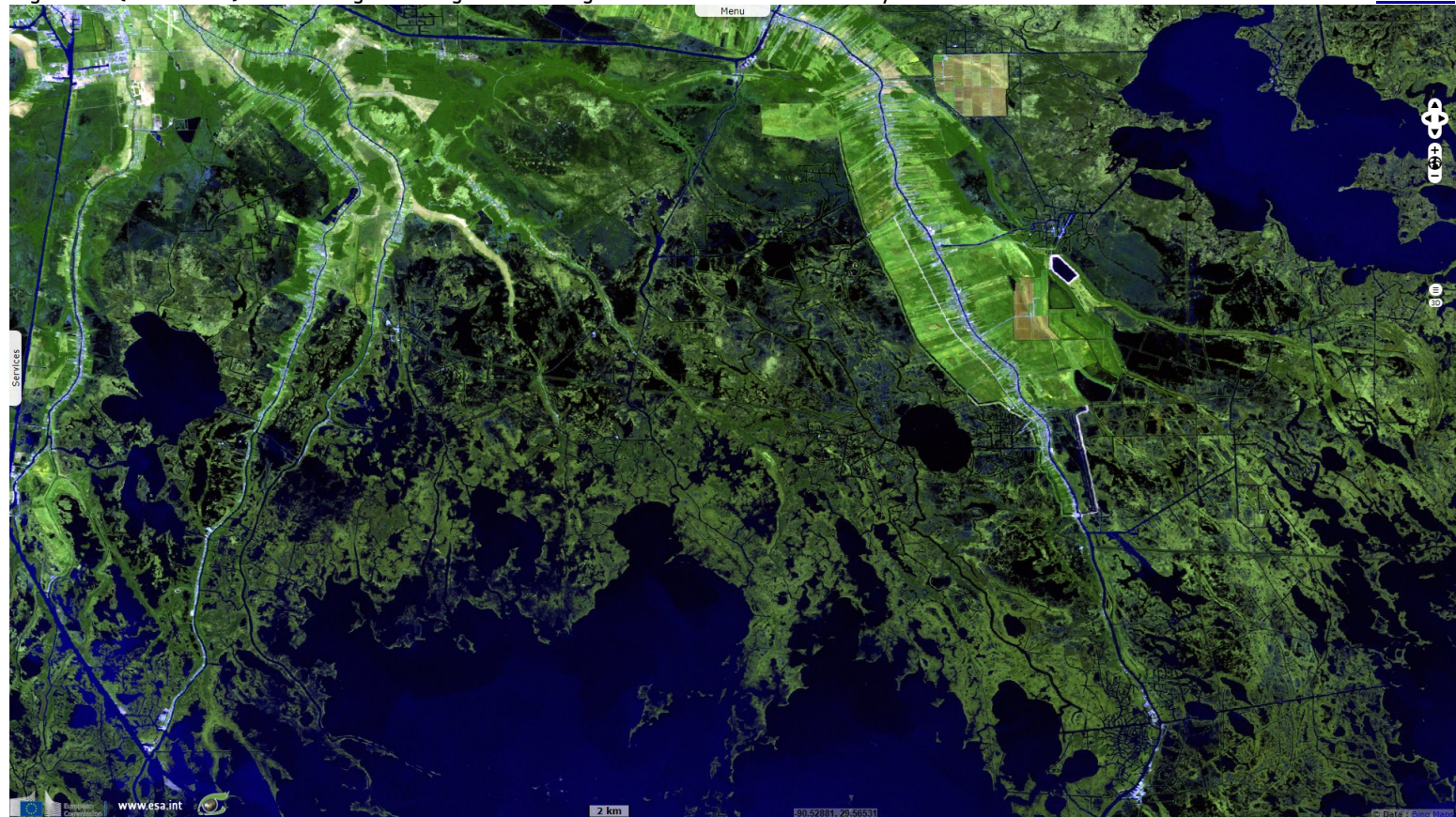
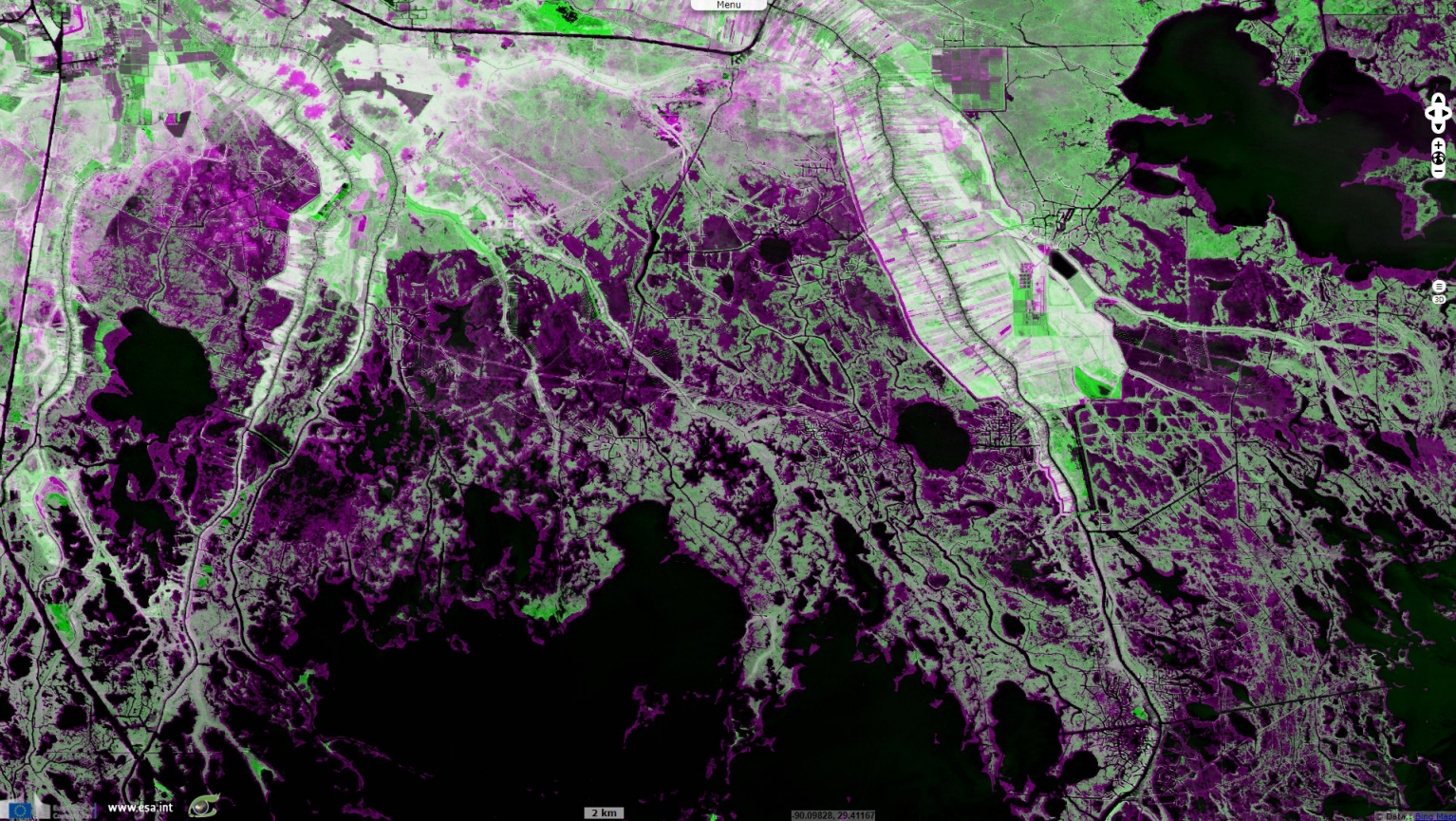


Fig. 5 - S2 (05.04.2021) - A massive proportion of the surface disappeared underwater, the subsidence is worsened by the pumping caused by the oil industry.








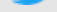




[2D view](#)



Fig. 6 - L5 (06.04.1984) & S2 (05.04.2021) - The magenta areas were land areas in 1984 that became open water in 2021. [2D animation](#) [2D view](#)



*The views expressed herein can in no way be taken to reflect the official opinion of the European Space Agency or the European Union.
Contains modified Copernicus Sentinel data 2021, processed by VisioTerra.*

| | | | | | | | |
|------------------------------------|---|---|---|--|------------------------------------|-----------------------------------|--------------------------------|
| More on European Commission space: |  |  |  | | | | |
| More on ESA: |  |  |  | S-1 website | S-2 website | S-3 website | |
| More on Copernicus program: |  |  |  | Scihub portal | Cophub portal | Inthub portal | Colhub portal |
| More on VisioTerra: |  |  |  | Sentinel Vision Portal | Envisat+ERS portal | Swarm+GOCE portal | CryoSat portal |