

Missouri - Mississippi colored confluence, St Louis, USA

Sentinel-2 MSI acquired on 21 April 2019 at 16:39:01 UTC
Sentinel-2 MSI acquired on 18 September 2019 at 16:40:21 UTC
Sentinel-2 MSI acquired on 07 December 2019 at 16:47:01 UTC
Sentinel-2 MSI acquired on 01 January 2020 at 16:47:09 UTC

Author(s): Sentinel Vision team, VisioTerra, France - svp@visioterra.fr

Keyword(s): Hydrology, river, water colour, seasons, ice melt, snowfall, erosion, sediments, alluvium, precipitations, flooding

[2D Layerstack](#)

Fig. 1 - S2 (07.12.2019) - 4,3,2 natural colour - North of St Louis, confluence of Missouri (lighter, right bank, west) & Mississippi (darker, left). [2D view](#)



Illinois river (left) merges with Mississippi only 32km upstream of the Missouri confluence; Illinois grayish waters are only fully mixed near St Louis.

Fig. 2 - 18.09.2019 - At St Louis, Missouri has flowed 4247 km from its source Brower's Spring; Mississippi 1873 km from Little Elk Lake. [2D view](#)



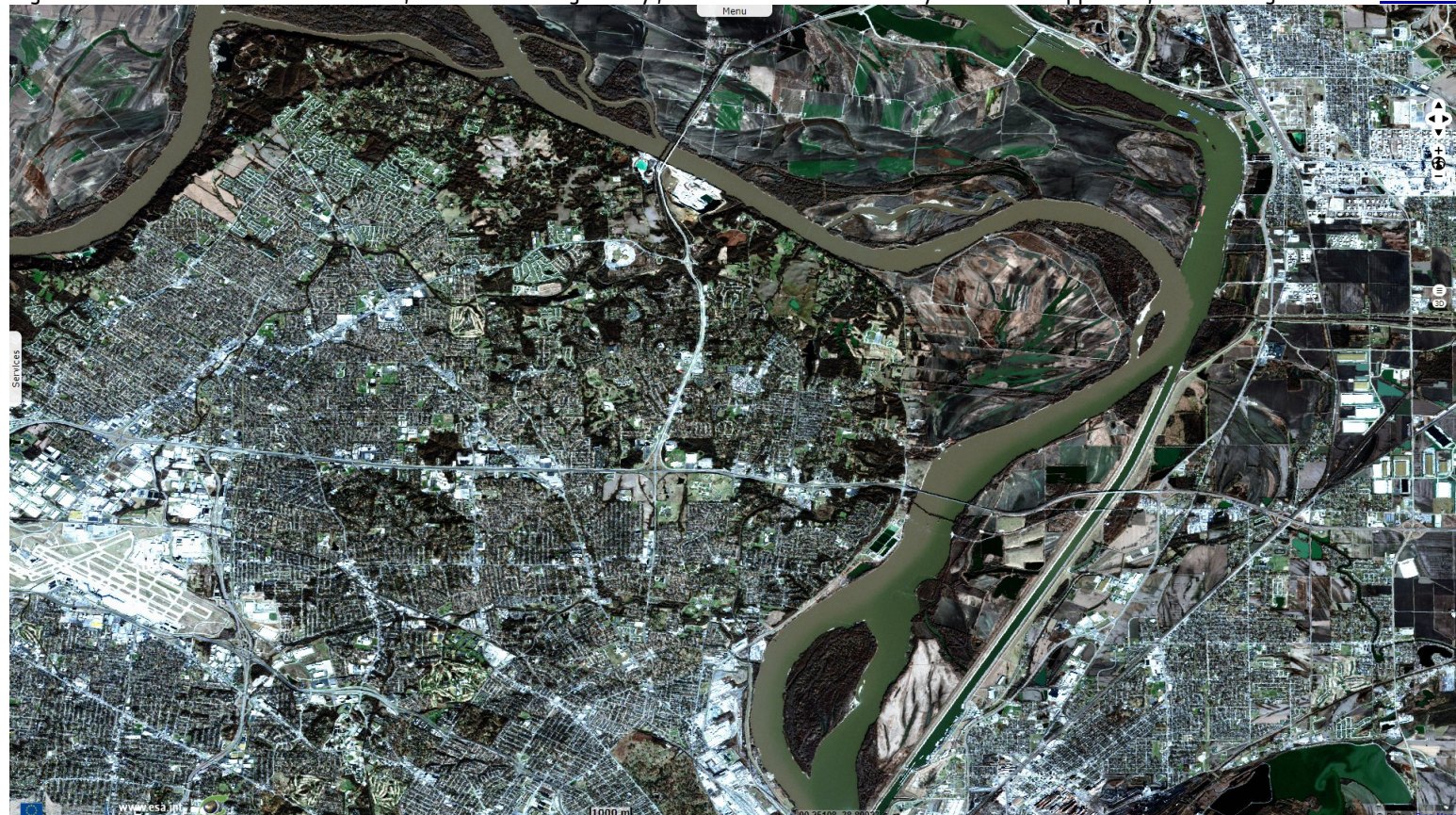
Fig. 3 - 21.04.2019 - Exceptional weather caused months-lasting floods that broke levels recorded since the dam-building era.

[2D view](#)



Fig. 4 - 01.01.2020 - Born in the Rockies, Missouri aka 'Big Muddy', erodes more silt on its way than Mississippi does, hence its lighter color

[2D view](#)



*The views expressed herein can in no way be taken to reflect the official opinion of the European Space Agency or the European Union.
Contains modified Copernicus Sentinel data 2019, processed by VisioTerra.*

More on European Commission space:						
More on ESA:				S-1 website	S-2 website	S-3 website
More on Copernicus program:				SciHub portal	Cophub portal	Inthub portal
More on VisioTerra:				Sentinel Vision Portal	Envisat+ERS portal	Swarm+GOCE portal
					CryoSat portal	