

Focus on Johannesburg, South Africa largest city

Sentinel-1 CSAR IW acquired on 16 April 2019 at 03:34:36 UTC
Sentinel-2 MSI acquired on 27 April 2019 at 07:46:19 UTC
Sentinel-1 CSAR IW acquired on 28 April 2019 at 03:34:36 UTC
Sentinel-1 CSAR IW acquired on 10 May 2019 at 03:34:36 UTC

Author(s): Sentinel Vision team, VisioTerra, France - svp@visioterra.fr

Keyword(s): Land, urban planning, infrastructure, RSA, South Africa

[2D Layerstack](#)

Fig. 1 - S2 (27.04.2019) - 12,8,4 - The spacial organisation of Johannesburg is largely inherited from the Apartheid racial divisions.

[2D view](#)



Fig. 2 - 4,3,2 natural colour - Surrounded by vegetation and large roads, standing suburbs are darker than densely packed roof plate slums.

[2D view](#)



Fig. 3 - 8,4,3 composite - The trees and lawns of wealthy areas show in red, contrasting with the green-cyan of poorer residential areas.

[2D view](#)

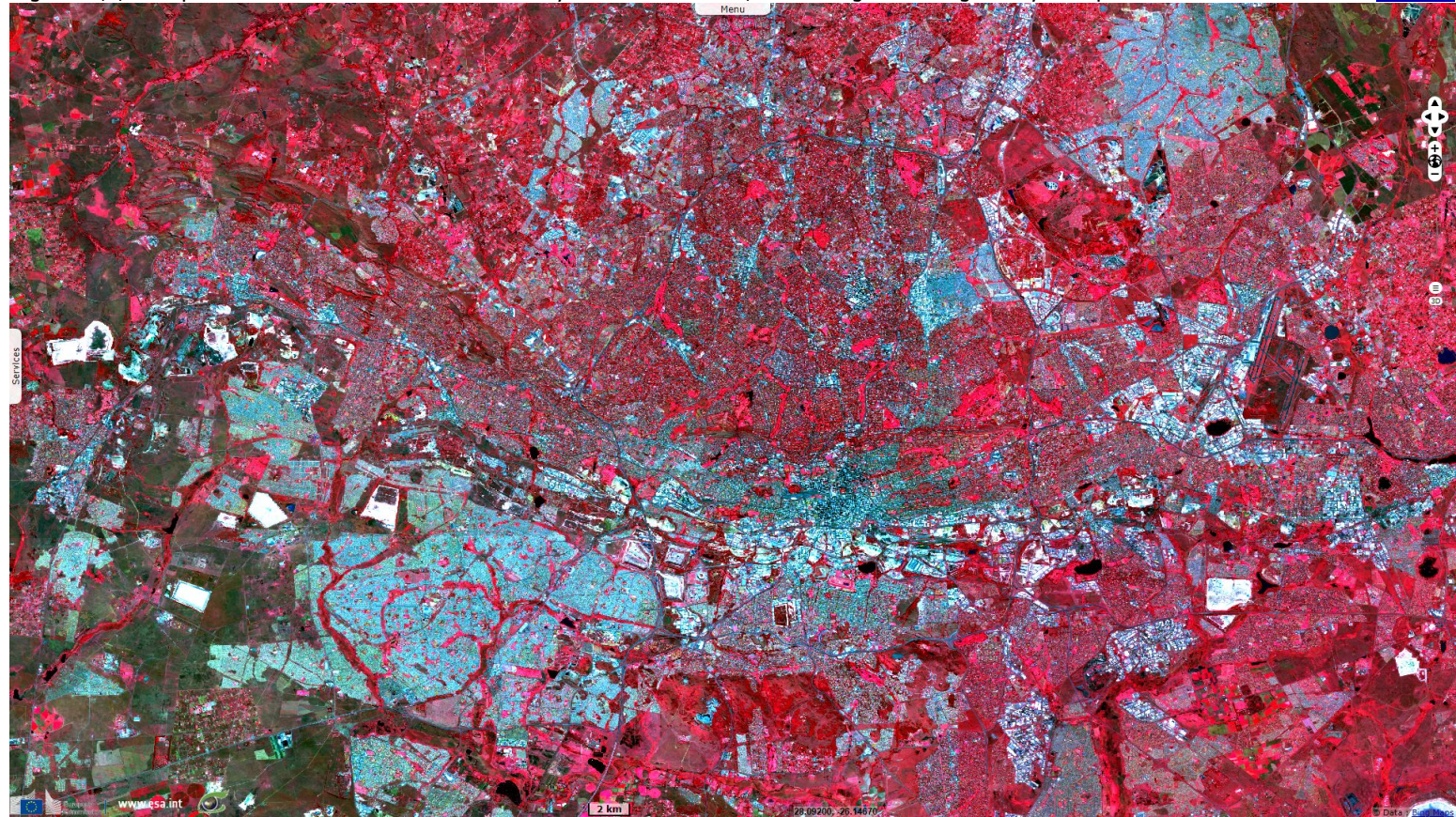


Fig. 4 - S1 (mean 16.04.2019, 28.04.2019 & 10.05.2019) - vv,vh,vv - Denser roof plate housing in townships show in bright saturated colour.

[2D view](#)



*The views expressed herein can in no way be taken to reflect the official opinion of the European Space Agency or the European Union.
Contains modified Copernicus Sentinel data 2019, processed by VisioTerra.*

More on European Commission space:						
More on ESA:				S-1 website	S-2 website	S-3 website
More on Copernicus program:				SciHub portal	CopHub portal	Inthub portal
More on VisioTerra:				Sentinel Vision Portal	Envisat+ERS portal	Swarm+GOCE portal
					CryoSat portal	