

Vistula Spit Canal, new Polish connection to the Baltic Sea

Sentinel-1 CSAR IW acquired on 09 October 2018 at 16:27:12 UTC
Sentinel-2 MSI acquired on 13 October 2018 at 10:00:21 UTC

...
Sentinel-1 CSAR IW acquired on 06 October 2022 at 16:28:17 UTC
Sentinel-2 MSI acquired on 07 October 2022 at 10:00:29 UTC

Author(s): Sentinel Vision team, VisioTerra, France - svp@visioterra.fr

Keyword(s): Coastal, infrastructure, marine traffic, lagoon, sand bar, biodiversity, Poland, Baltic Sea



[3D Layerstack](#)

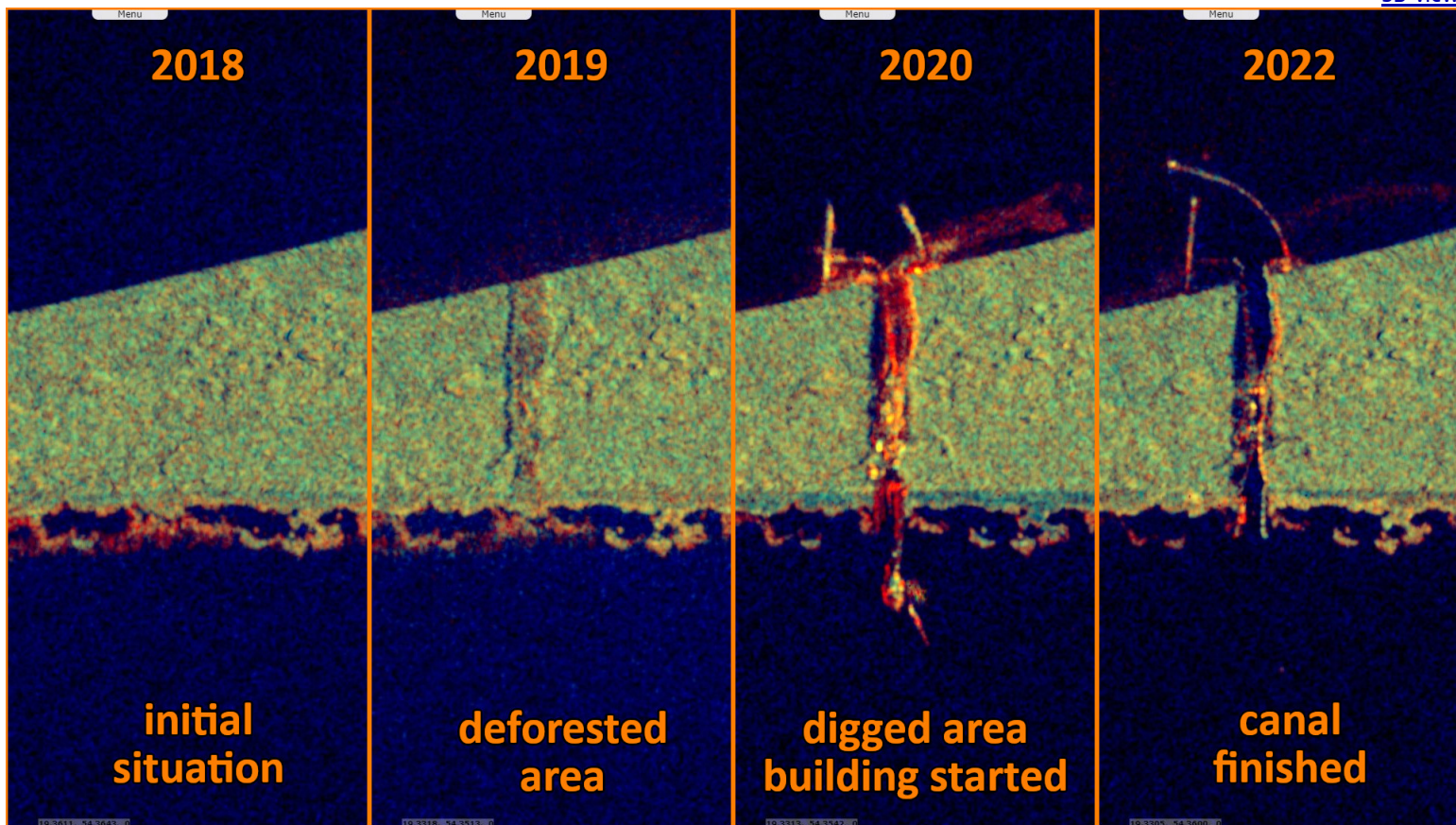
Fig. 1 - S1 (05->29.10.2021) - The Vistula Canal was built between Vistula Lagoon & Gdańsk Bay to avoid the Russian waters of Kaliningrad exclave.

[2D view](#)



The Vistula Spit canal is a canal across the Polish section of the Vistula Spit sandbar that creates a second connection between the Vistula Lagoon and Baltic Sea. It allows ships to enter the Vistula Lagoon and the port of Elbląg without having to rely on the Russian Strait of Baltiysk, saving a 100 km journey.

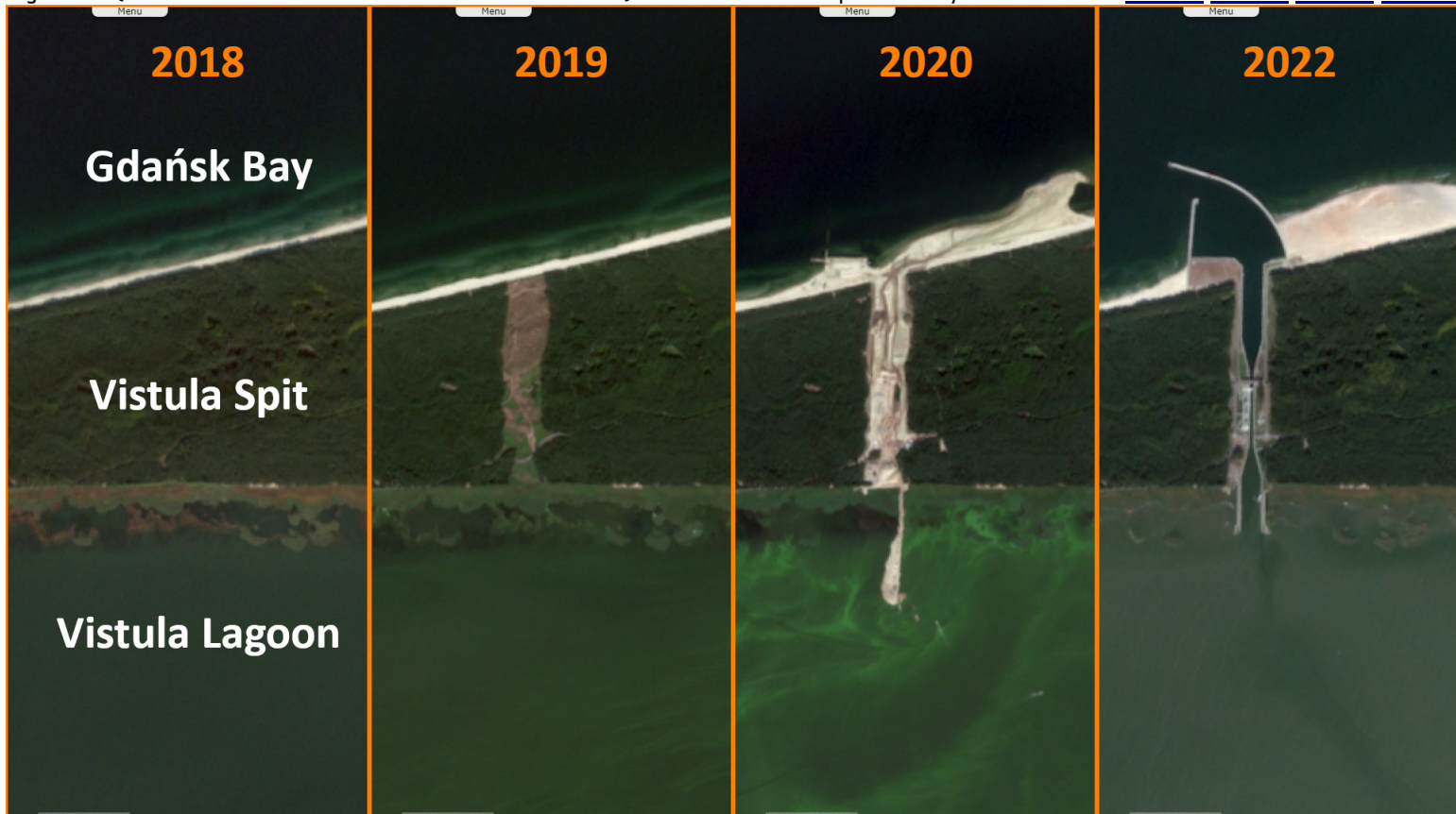
Fig. 2 - S1 (09.10.2018->02.11.2018 / 04-28.10.2019 / 10.10.2020->03.11.2020 / 06->30.10.2022) - 2018-2022 Evolution. [3D view](#) [3D view](#) [3D view](#) [3D view](#)















The construction of the canal started in February 2019; it was officially inaugurated on 17 September 2022. It is 1305 m long and allows ships of draft up to 4 m.

Fig. 3 - S2 (13.10.2018 / 26.08.2019 / 15.08.2020 / 07.10.2022) - The canal was completed in 3 years.

[3D view](#) [3D view](#) [3D view](#) [3D view](#)



An elliptical artificial island (to be named Aestian Island) of 180 hectares is expected to become a wild-bird habitat.

| | | | | | | | |
|------------------------------------|---|---|---|--|------------------------------------|-----------------------------------|--------------------------------|
| More on European Commission space: |  |  |  | | | | |
| More on ESA: |  |  |  | S-1 website | S-2 website | S-3 website | |
| More on Copernicus program: |  |  |  | SciHub portal | CopHub portal | Inthub portal | Colhub portal |
| More on VisioTerra: |  |  |  | Sentinel Vision Portal | Envisat+ERS portal | Swarm+GOCE portal | CryoSat portal |



Funded by the EU and ESA

SED-1224-SentinelVision

