

Evictions in Simien National Park, Ethiopia

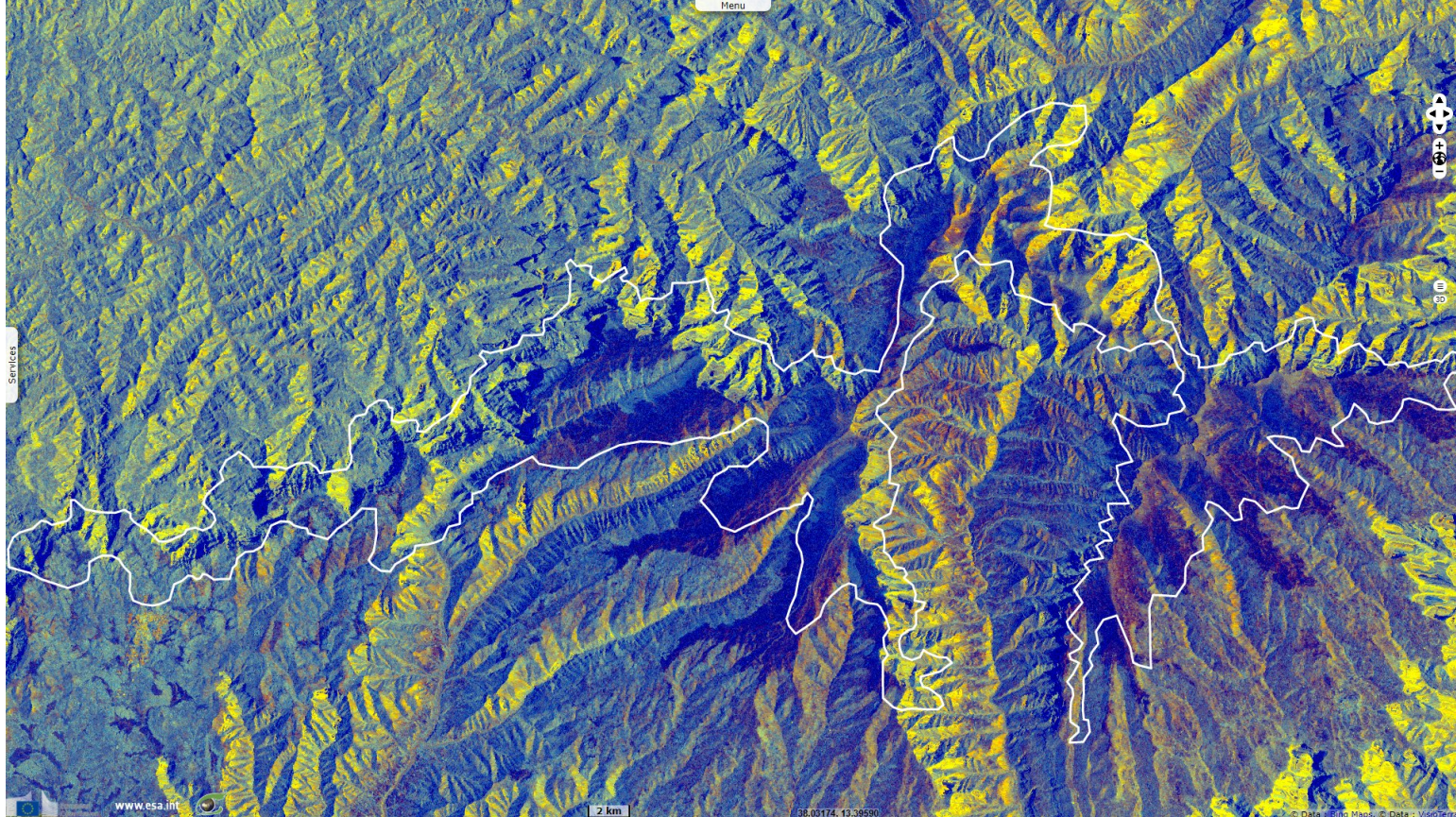
Sentinel-2 MSI acquired on 12 November 2020 at 07:51:51 UTC
Sentinel-1 CSAR IW acquired on 13 November 2020 at 03:16:21 UTC

Author(s): Sentinel Vision team, VisioTerra, France - svp@visioterra.fr

Keyword(s): National park, natural preserve, biodiversity, agriculture, deforestation, poaching, overgrazing, Ethiopia

[3D Layerstack](#)

Fig. 1 - S1 (13.11.2020) - Journalist Guillaume Blanc says conservation organisations backed dwellers eviction from several natural reserves. [2D view](#)



He chooses the exemple of Siemen National Park, Ethiopia, where inhabitants lived along Abyssinia Ibex at its promulgation in 1969. Poaching, deforestation and overgrazing where not a problem then.

Fig. 2 - S2 (12.11.2020) - Inhabitants originally didn't hunt the species, until they found its disappearance could give them the land back.

[2D view](#)

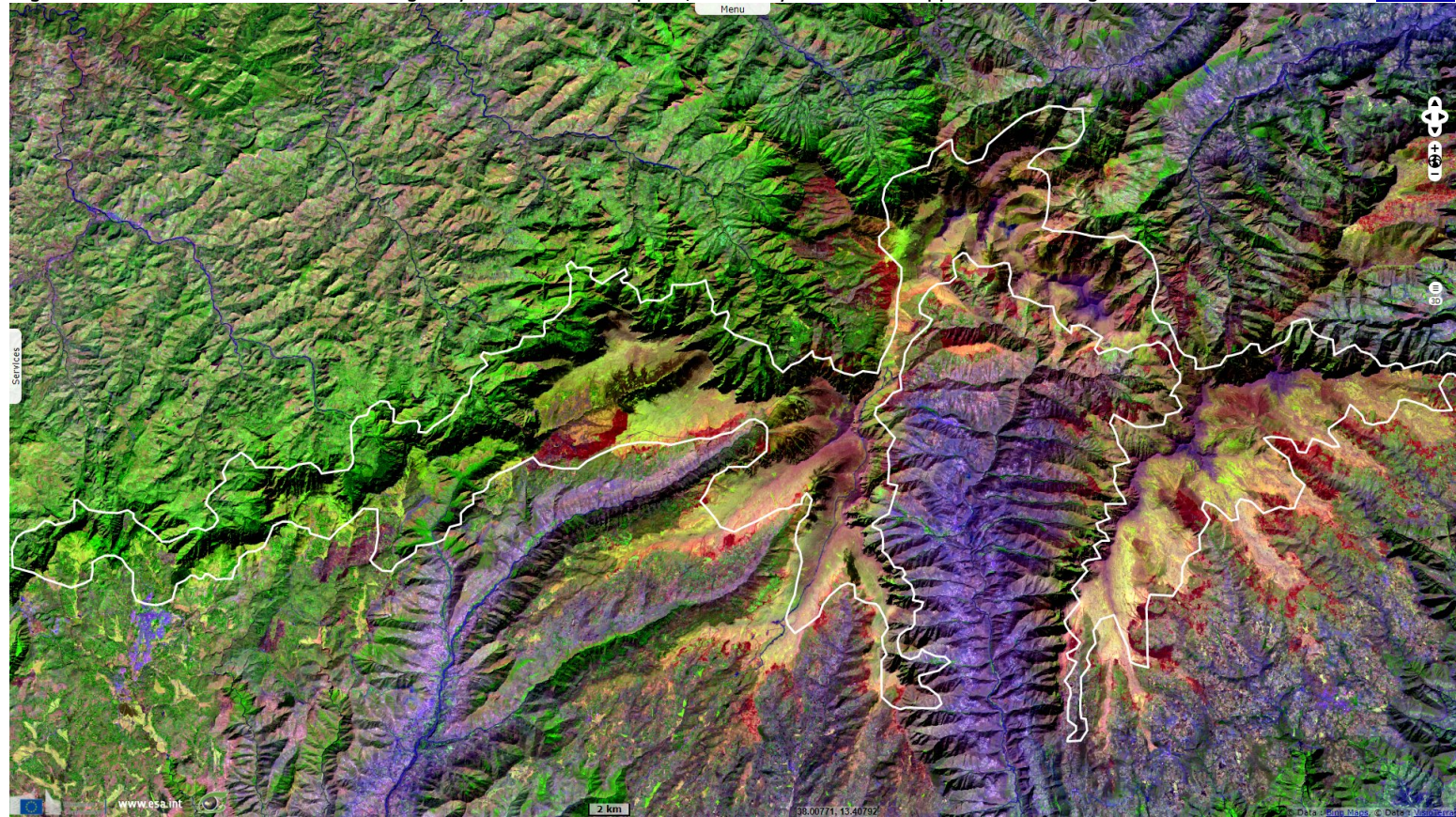


Fig. 3 - S2 (12.11.2020) - Numerous dwellings can now be observed around the National Park, but also within it.

[2D view](#)

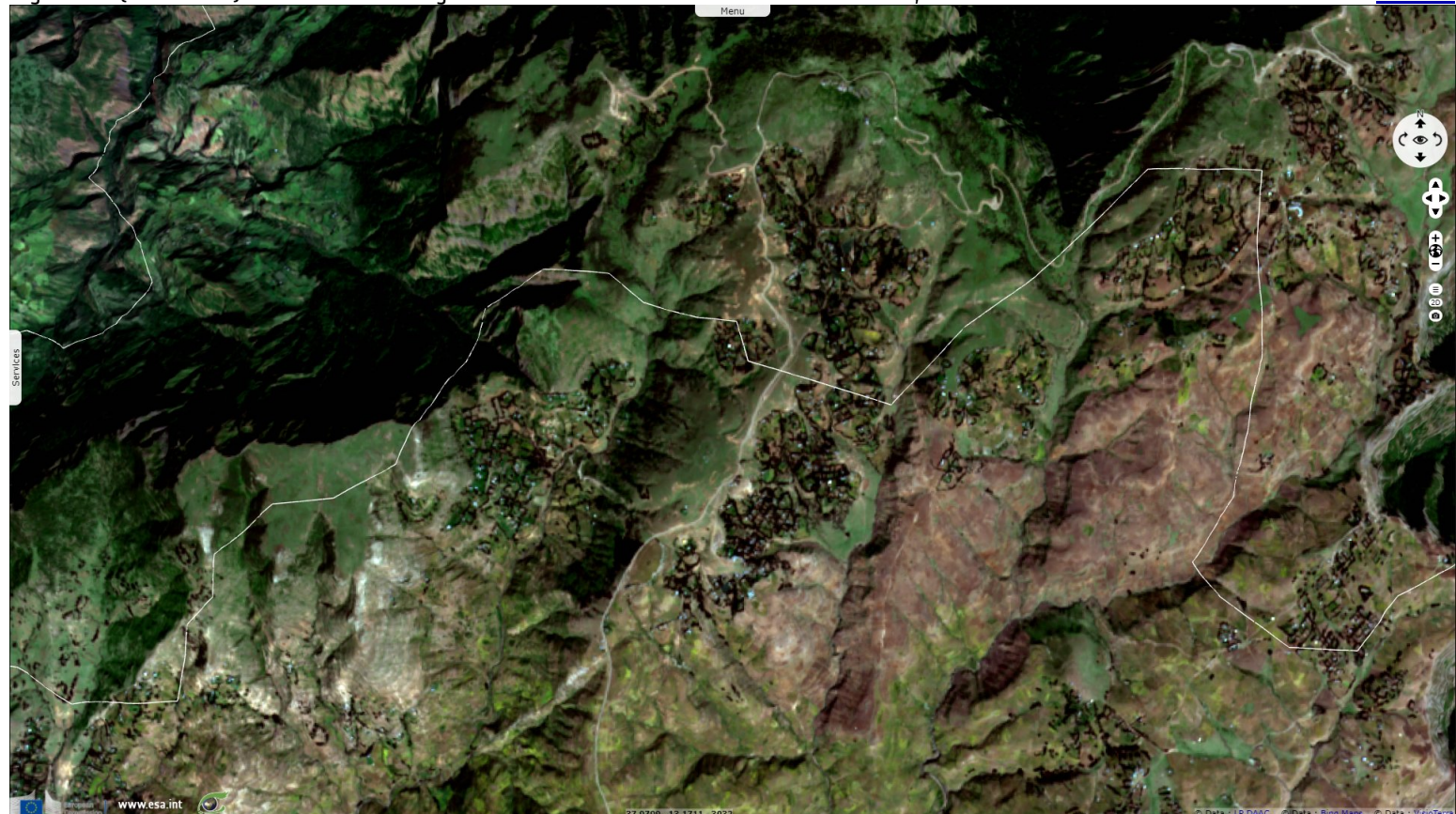














Fig. 4 - S2 (12.11.2020) - It cannot be known from these images which existed there before the 1969 foundation & which where built after. [2D view](#)



*The views expressed herein can in no way be taken to reflect the official opinion of the European Space Agency or the European Union.
Contains modified Copernicus Sentinel data 2020, processed by VisioTerra.*

More on European Commission space:						
More on ESA:				S-1 website	S-2 website	S-3 website
More on Copernicus program:				SciHub_portal	Cophub_portal	Inthub_portal Colhub_portal
More on VisioTerra:				Sentinel Vision Portal	Envisat+ERS portal	Swarm+GOCE portal CryoSat_portal