

# Islas de la Bahía, Honduras

Sentinel-1 CSAR IW acquired on 30 March 2021 at 11:37:25 UTC  
Sentinel-1 CSAR IW acquired on 11 April 2021 at 11:37:26 UTC  
Sentinel-1 CSAR IW acquired on 23 April 2021 at 11:37:26 UTC  
Sentinel-2 MSI acquired on 22 March 2022 at 16:08:39 UTC

Author(s): Sentinel Vision team, VisioTerra, France - [svp@visioterra.fr](mailto:svp@visioterra.fr)

Keyword(s): Archipelago, islands, water colour, coral reef, lagoon, mangrove, Honduras.



[3D Layerstack](#)

Fig. 1 - S1 (30.03.2021->11.04.2021) - Large islands nesting coral reefs and creeks, Islas de la Bahía lie 120 km off the northern Coast of Honduras. [2D view](#)

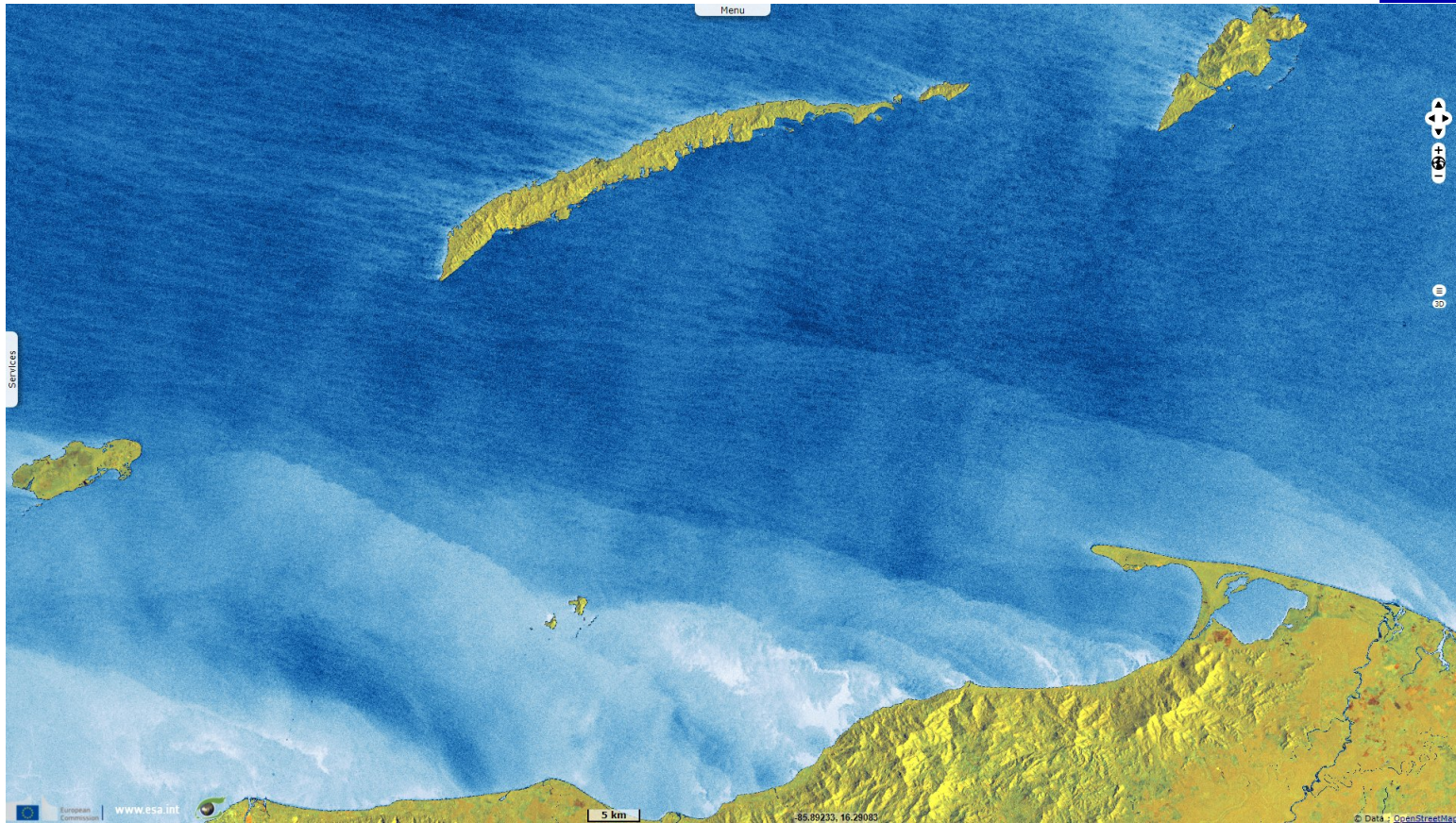


Fig. 2 - S2 (22.03.2022) - Utila is the westernmost, most eroded and least populated of the three main islands. [2D view](#)



