

# Looking in the eye of Cyclone Lane as it nears Hawaii

Sentinel-3 SRAL LAND acquired on 21 August 2018 at 07:38:11 UTC  
Sentinel-3 SLSTR RBT acquired on 21 August 2018 from 08:03:25 to 08:06:25 UTC  
Sentinel-3 SRAL LAND acquired on 21 August 2018 at 20:15:35 UTC  
Sentinel-3 SLSTR RBT acquired on 22 August 2018 at 20:09:09 UTC  
Sentinel-1 CSAR IW acquired on 23 August 2018 from 04:37:33 to 04:38:23 UTC

Author(s): Sentinel Vision team, VisioTerra, France - [svp@visioterra.fr](mailto:svp@visioterra.fr)

Keyword(s): Emergency, natural disaster, climate change, wind, hurricane, Hawaii, United States, USA

[2D Layerstack](#)

Fig. 1 - S3 SLSTR (21.08.2018) - S8 band with colour map & shadowing, S8 as elevation - Cat-5 cyclone Lane is nearing Hawaii. [3D view](#) [2D view](#)

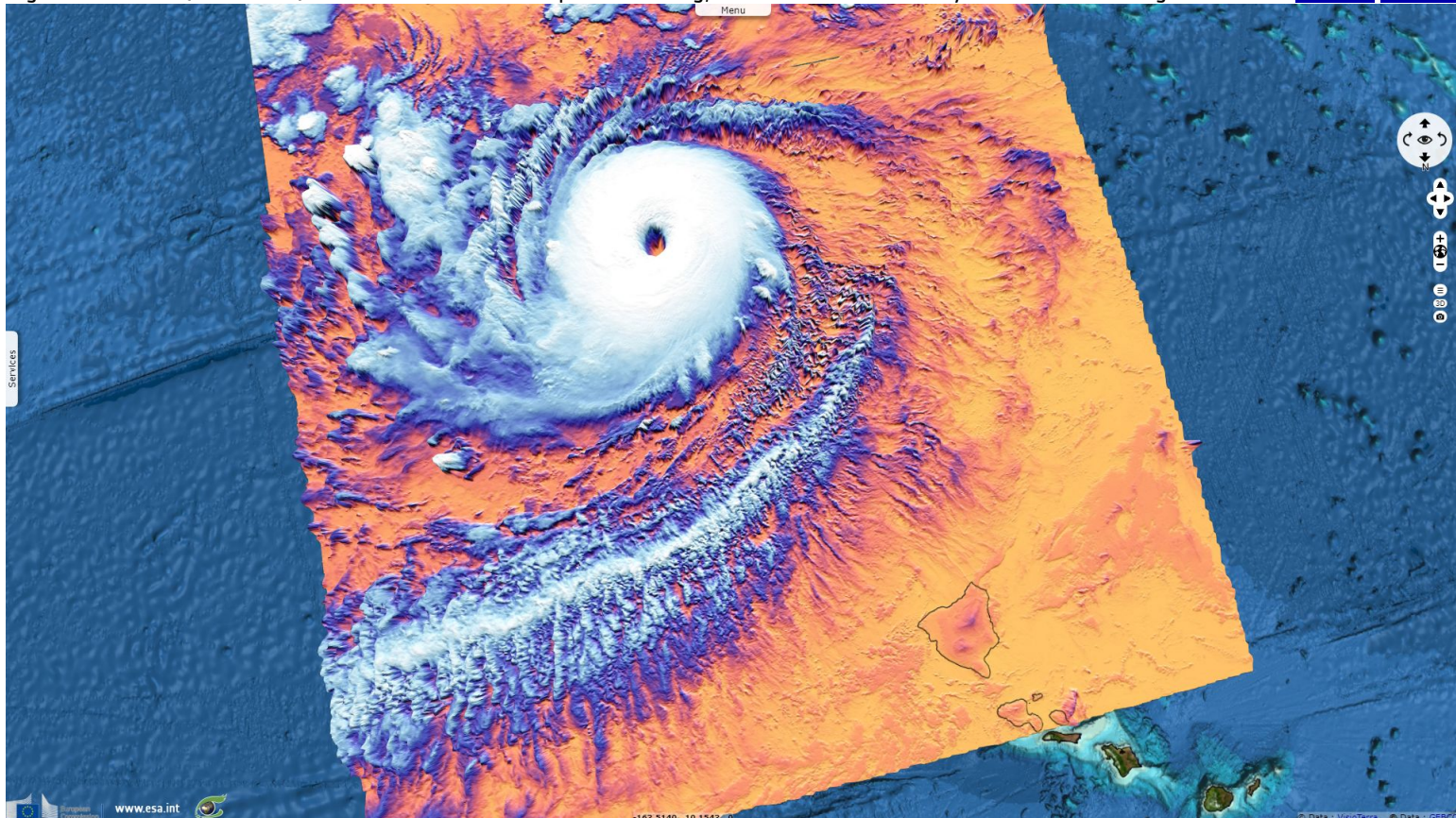


Fig. 2 - S3 SLSTR (22.08.2018) - S6,S5,S3 colour composite, S8 as elevation - The eye is still well visible the day after. [3D view](#) [2D view](#)

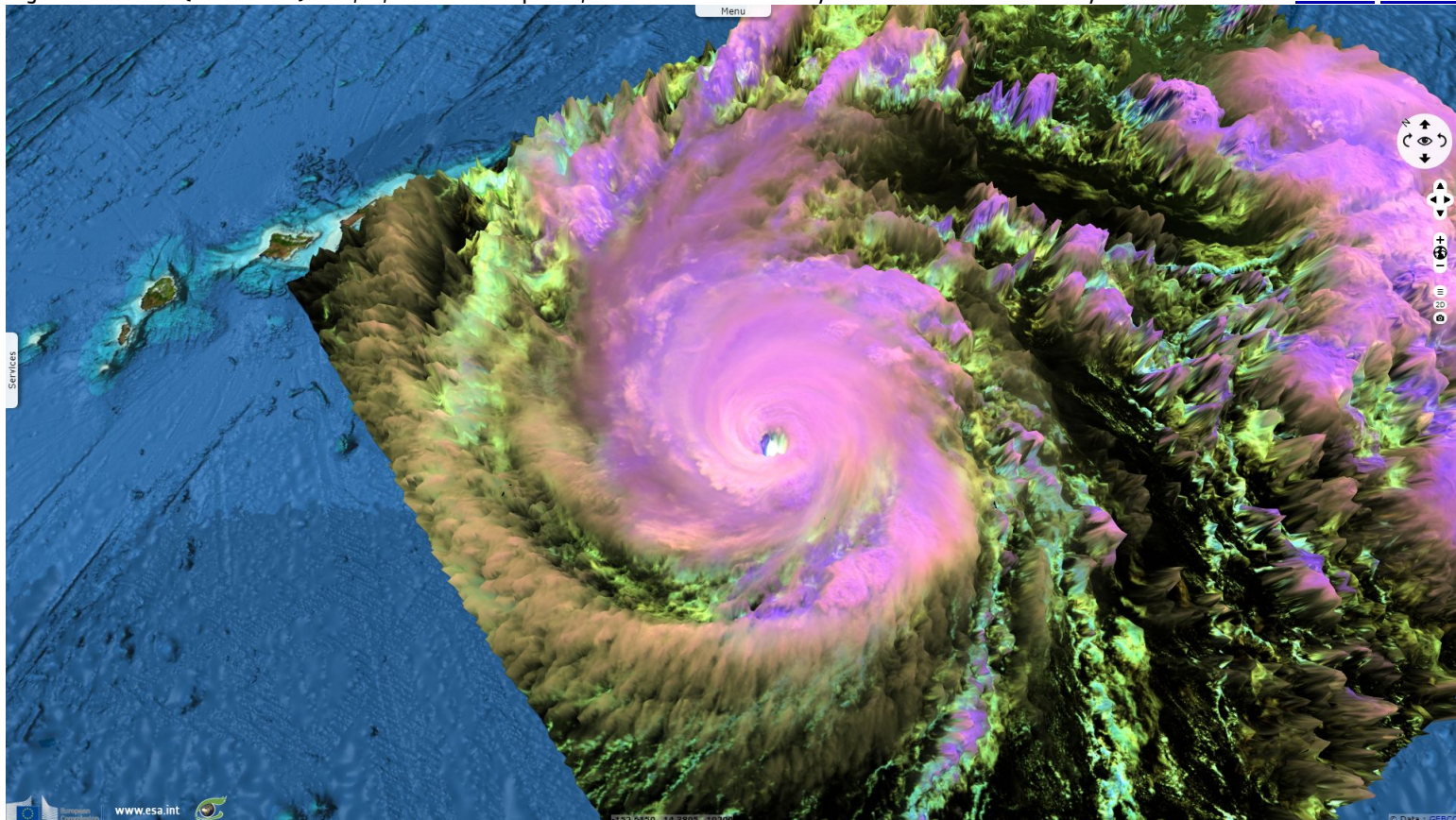
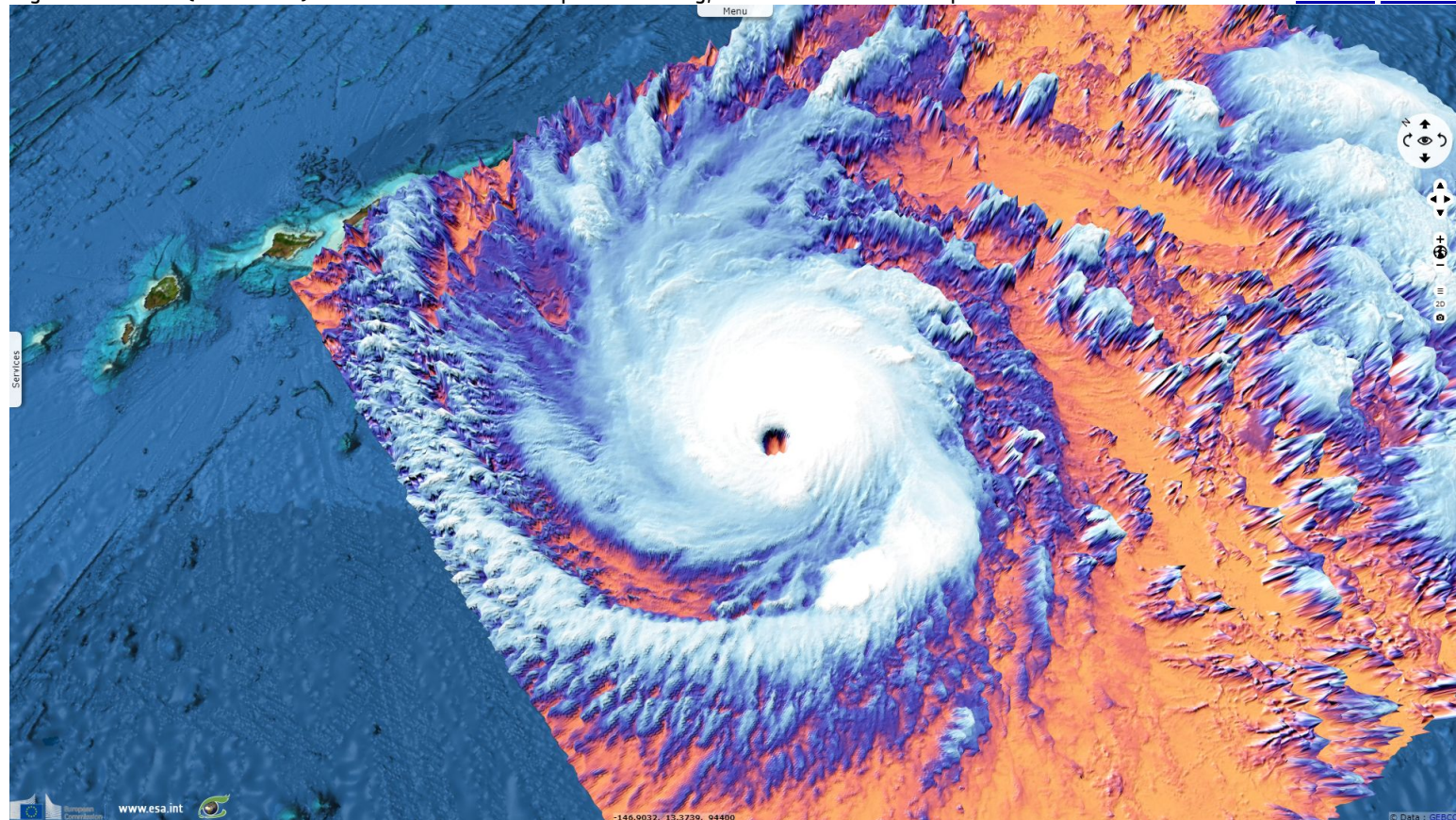




Fig. 3 - S3 SLSTR (22.08.2018) - S8 band with colour map & shadowing, S8 as elevation - It's expected to turn west before landfall. [3D view](#) [2D view](#)



Hurricane Lane may be the most powerful to hit Hawaii since recorded meteorology started. It reached 240kph sustained winds & 935hPa pressure  
Fig. 4 - S1 (23.08.2018) - vv,vh,vv colour composite - Both bands of Sentinel-1 show Lane stretching its arms. [3D view](#) [2D view](#)

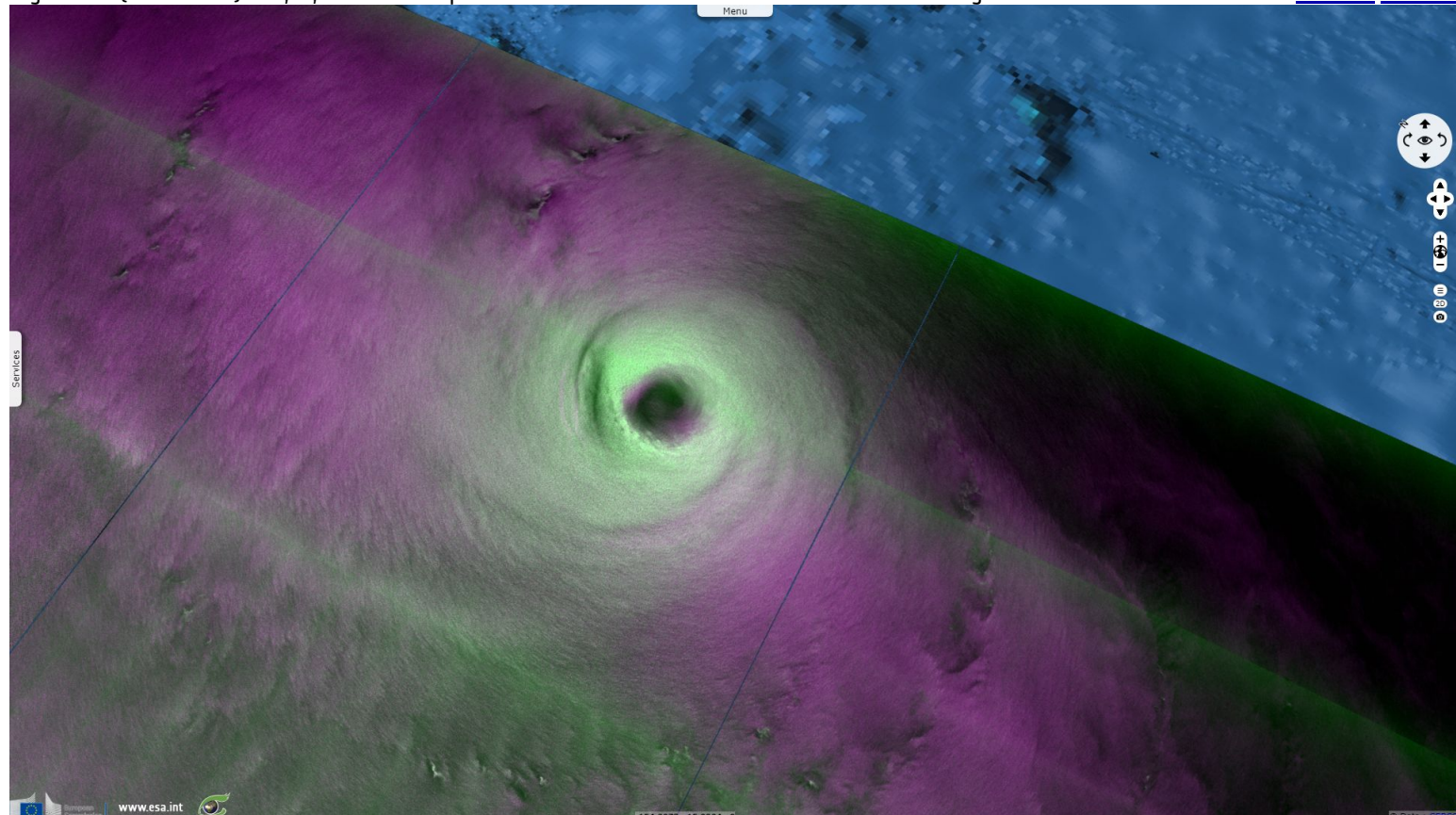
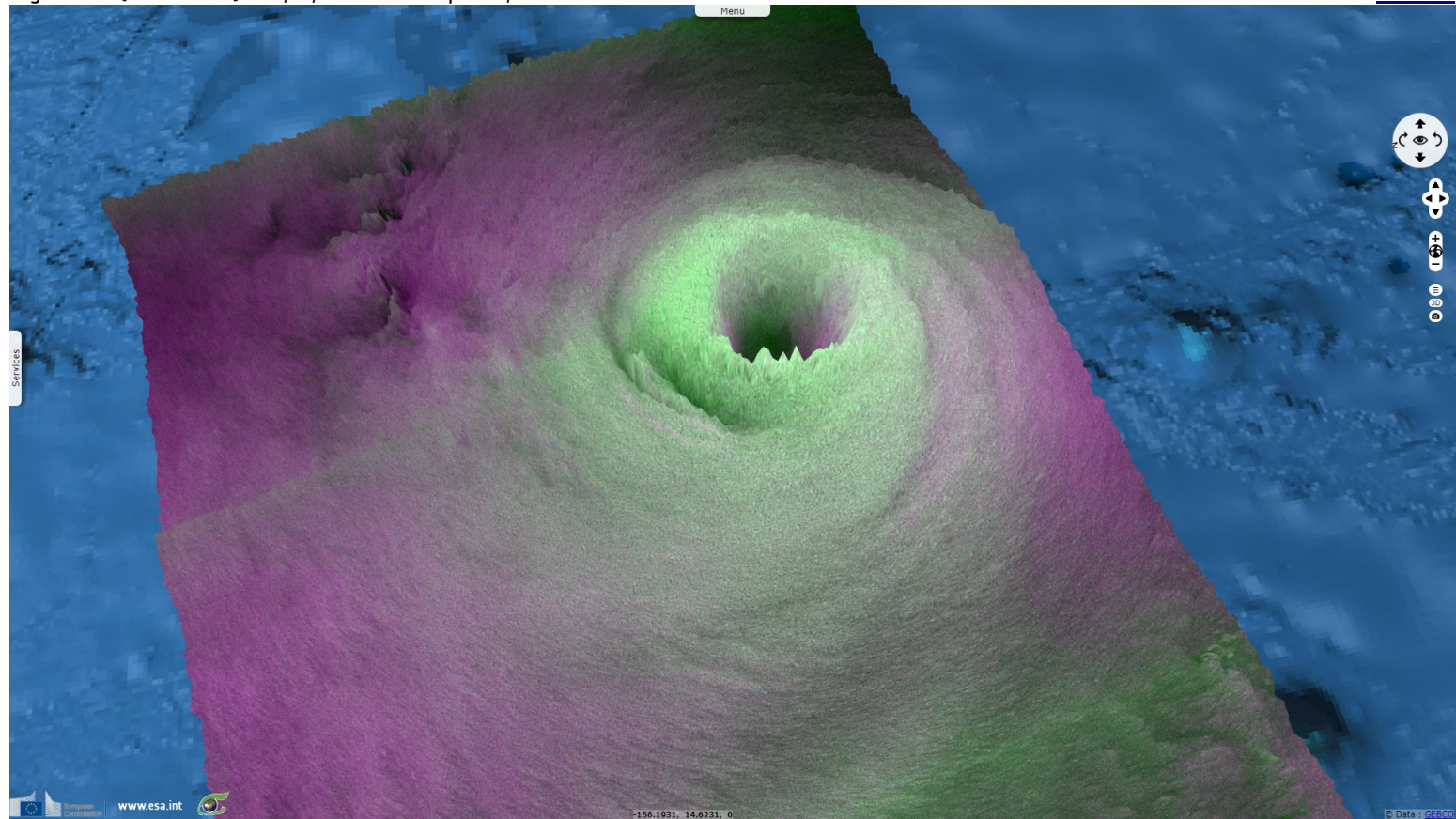
















Fig. 5 - S1 (23.08.2018) - vv,vh,vv colour composite, vh as elevation - It went down to cat-4 later the 22.08.2018.

[3D view](#)



*The views expressed herein can in no way be taken to reflect the official opinion of the European Space Agency or the European Union.*

More on European Commission space:									
More on ESA:				<a href="#">S-1 website</a>	<a href="#">S-2 website</a>	<a href="#">S-3 website</a>			
More on Copernicus program:				<a href="#">SciHub portal</a>	<a href="#">Cophub portal</a>	<a href="#">Inthub portal</a>	<a href="#">Colhub portal</a>		
More on VisioTerra:				<a href="#">Sentinel Vision Portal</a>	<a href="#">Envisat+ERS portal</a>	<a href="#">Swarm+GOCE portal</a>	<a href="#">CryoSat portal</a>	<a href="#">Proba-V portal</a>	