

Cerro Guaiquinima, Venezuela

Sentinel-1 CSAR IW acquired on **19 August 2018** at 10:00:43 UTC
Sentinel-1 CSAR IW acquired on **24 August 2018** at 22:32:16 UTC
Sentinel-1 CSAR IW acquired on **05 September 2018** at 22:32:17 UTC
Sentinel-1 CSAR IW acquired on **17 September 2018** at 22:32:17 UTC
Sentinel-2 MSI acquired on **26 February 2019** at 14:47:29 UTC

Author(s): Sentinel Vision team, VisioTerra, France - svp@visioterra.fr

Keyword(s): Mountain range, plateau, tableland, rainforest, biodiversity, national park, land, erosion, craton, Guiana shield

[2D Layerstack](#)

Fig. 1 - S1 (19.08.2018) - vv,vh,vv colour composite - Ascending view of Cerro Guaiquinima, a tableland in Venezuela.

[2D view](#) [3D view](#)

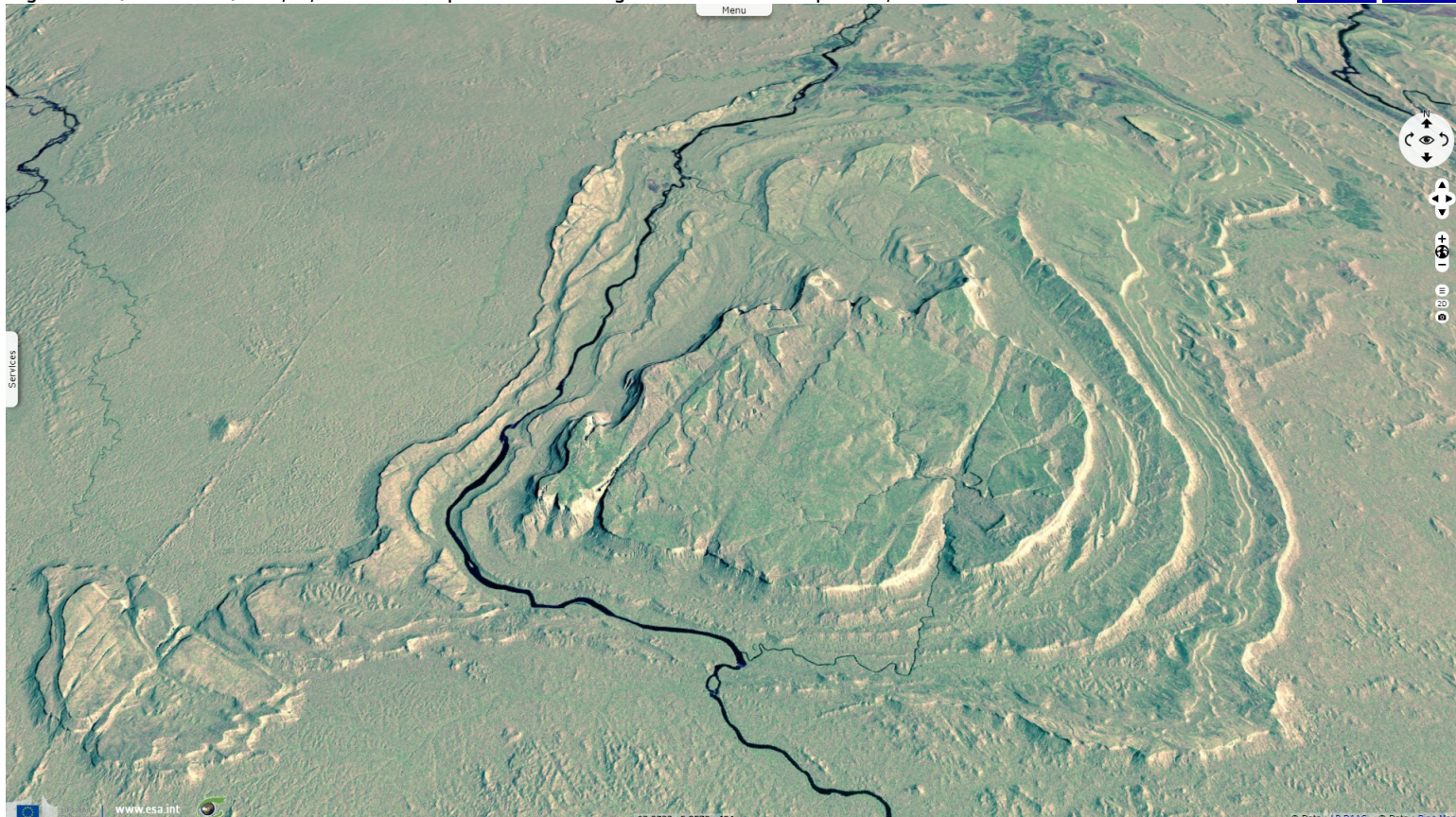


Fig. 2 - S1 (mean 24.08.2018, 05.09.2018, 17.09.2018) - neg(vh,vv,vh) colour composite - Descending view.

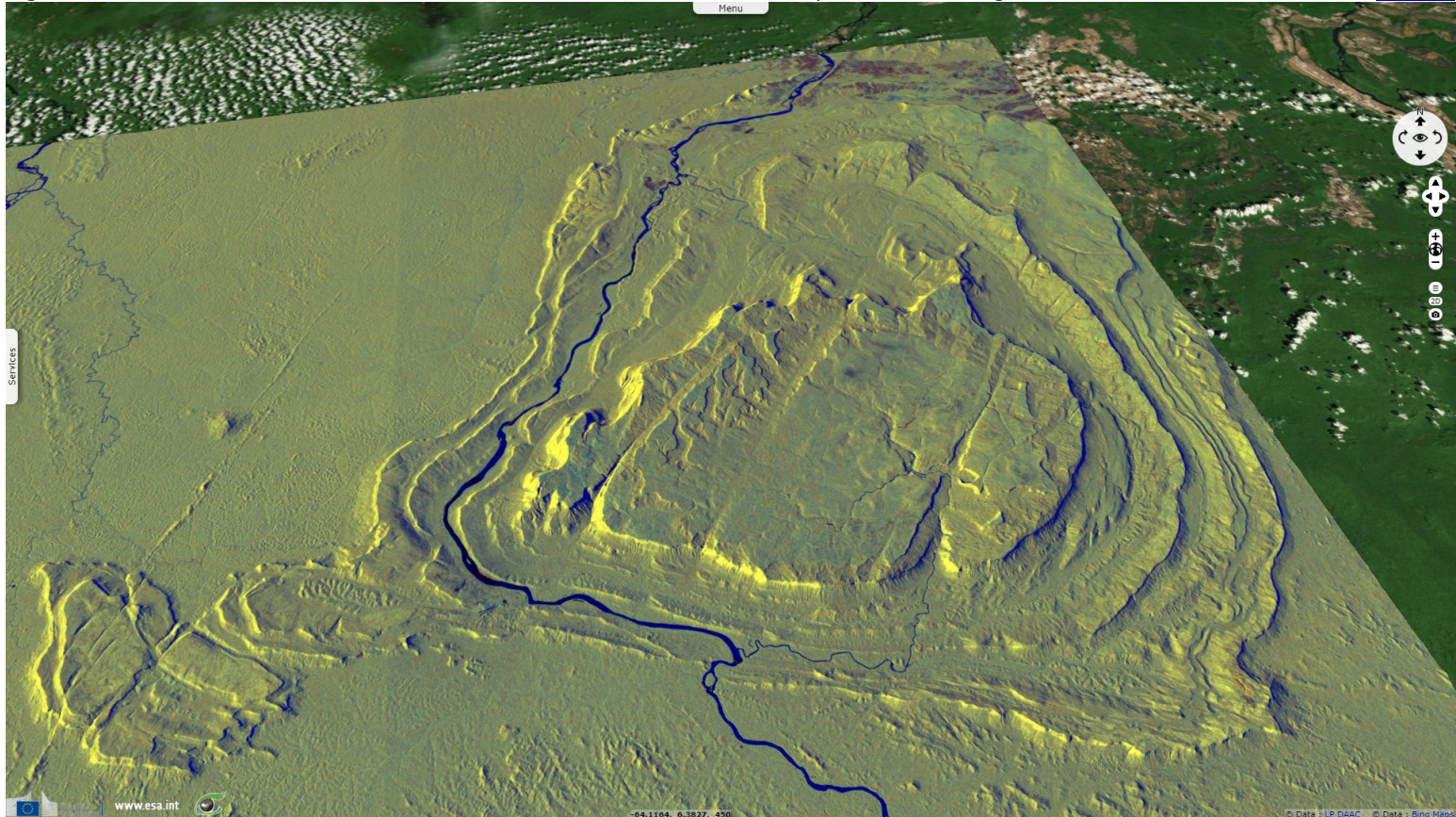
[3D view](#)



Located in the Guiana Highlands, Cerro Guaiquinima is one of the largest isolated sandstone mesas of the Pantepui region, with an estimated summit area of 1096 km².

Fig. 3 - S1 (mean 24.08.2018, 05.09.2018, 17.09.2018) - vv,vh,ndi(vh,vv) colour composite - Descending view.

[3D view](#)



This mountainous plateau lies in the Jaua-Sarisariñama National Park, at the southern tip of the Bolivar state in Venezuela. At an average height of 1413 m above sea level, this tepuy is one of the highest mountains in Bolívar.

Fig. 4 - S1 (19.08.2018) - neg(vh,vv,vh) colour composite - Ascending view, the highest part of the plateau lies on the western border.

[3D view](#)



It has very high precipitation values, which allows a dense vegetation with a high proportion of high forest at its top. It houses species with great ecological value, endemic to the Guayana region. Surrounded by 1000m high cliffs, it is a refuge for over 100 bird species.

Fig. 5 - S2 (23.02.2019) - 12,11,2 colour composite - 3 south-west / north-east cuts run throughout the plateau.

[3D view](#)

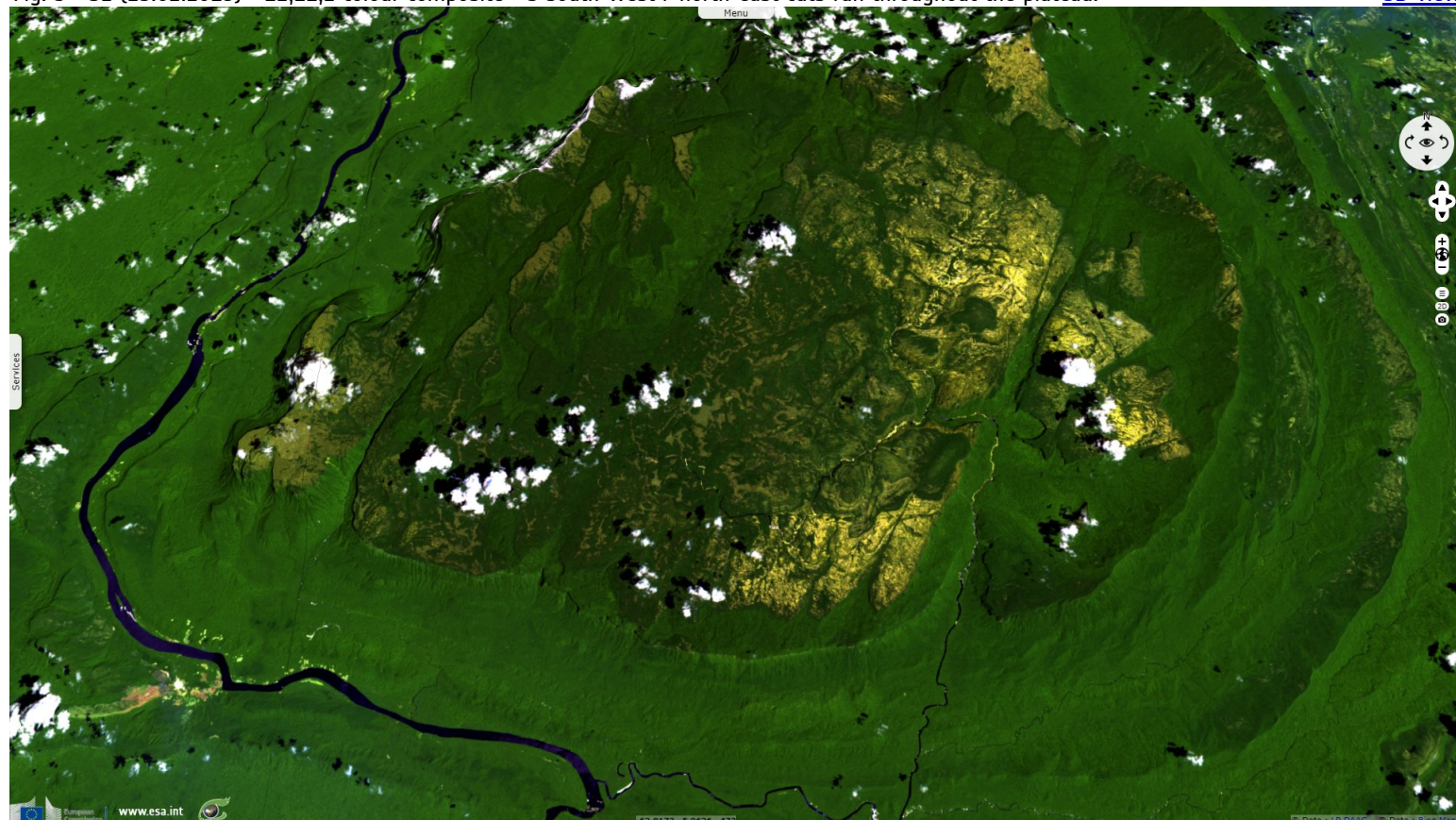
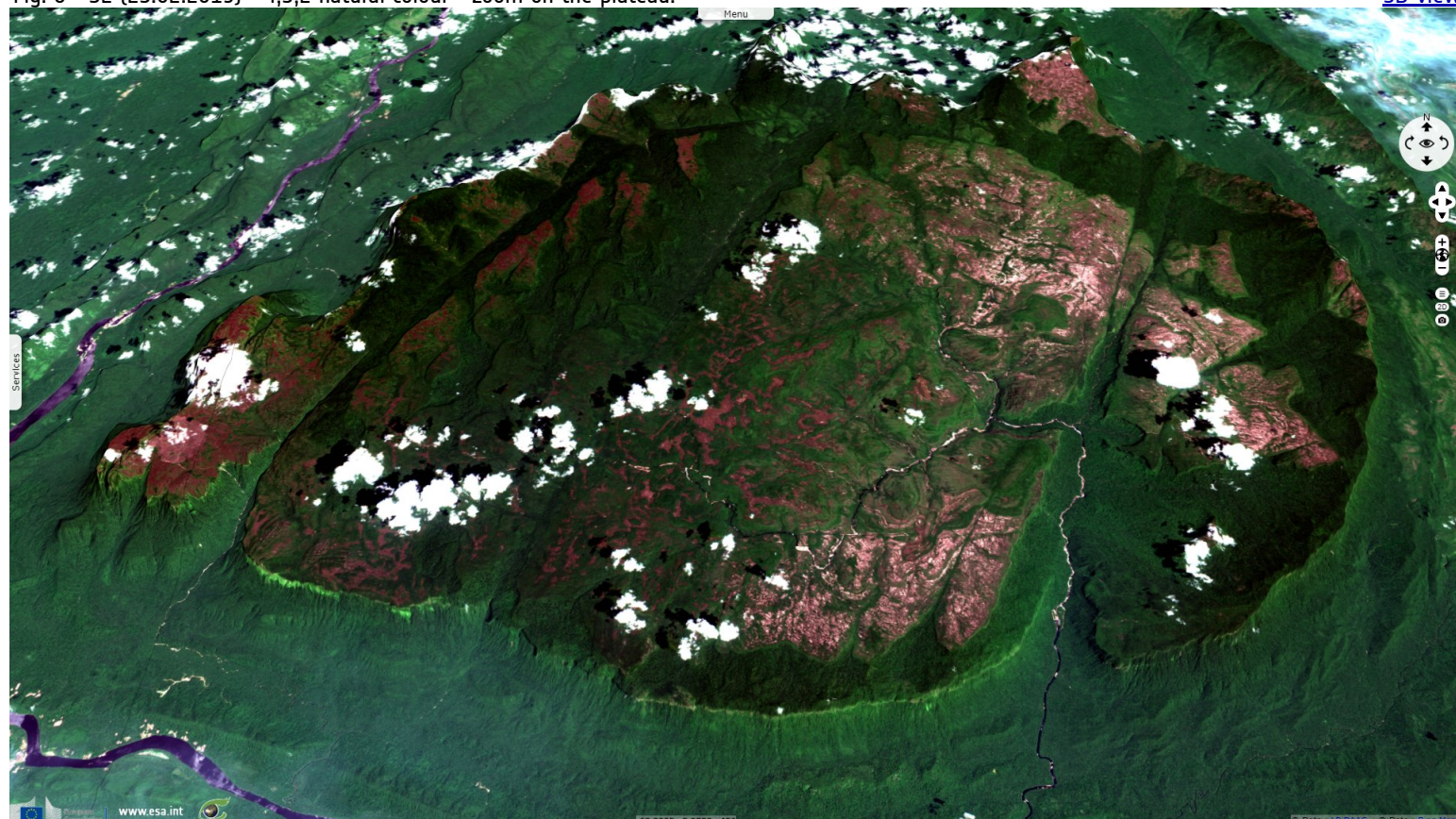


Fig. 6 - S2 (23.02.2019) - 4,3,2 natural colour - Zoom on the plateau.

[3D view](#)



*The views expressed herein can in no way be taken to reflect the official opinion of the European Space Agency or the European Union.
Contains modified Copernicus Sentinel data 2019, processed by VisioTerra.*

More on European Commission space:						
More on ESA:				S-1 website	S-2 website	S-3 website
More on Copernicus program:				SciHub portal	Cophub portal	Inthub portal
More on VisioTerra:				Sentinel Vision Portal	Envisat+ERS portal	Swarm+GOCE portal
					CryoSat portal	