

A near-record acqua alta floods Venice

Sentinel-3 SRAL LAND acquired on 13 November 2019 at 09:38:19 UTC
Sentinel-3 SRAL LAND acquired on 14 November 2019 at 20:32:08 UTC
Sentinel-1 CSAR IW acquired on 15 November 2019 at 05:19:04 UTC
Sentinel-1 CSAR IW acquired on 15 November 2019 at 05:19:29 UTC

Author(s): Sentinel Vision team, VisioTerra, France - svp@visioterra.fr

Keyword(s): Natural disaster, flood, lagoon, urban planning, precipitations, UNESCO World Heritage site, Italy, Adriatic Sea



[2D Layerstack](#)

Fig. 1 - S1 (15.11.2019) - vv,vh,ndi(vh,vv) colour composite - A near-record acqua alta flooded Venice on 12.11.2019.

[2D view](#)

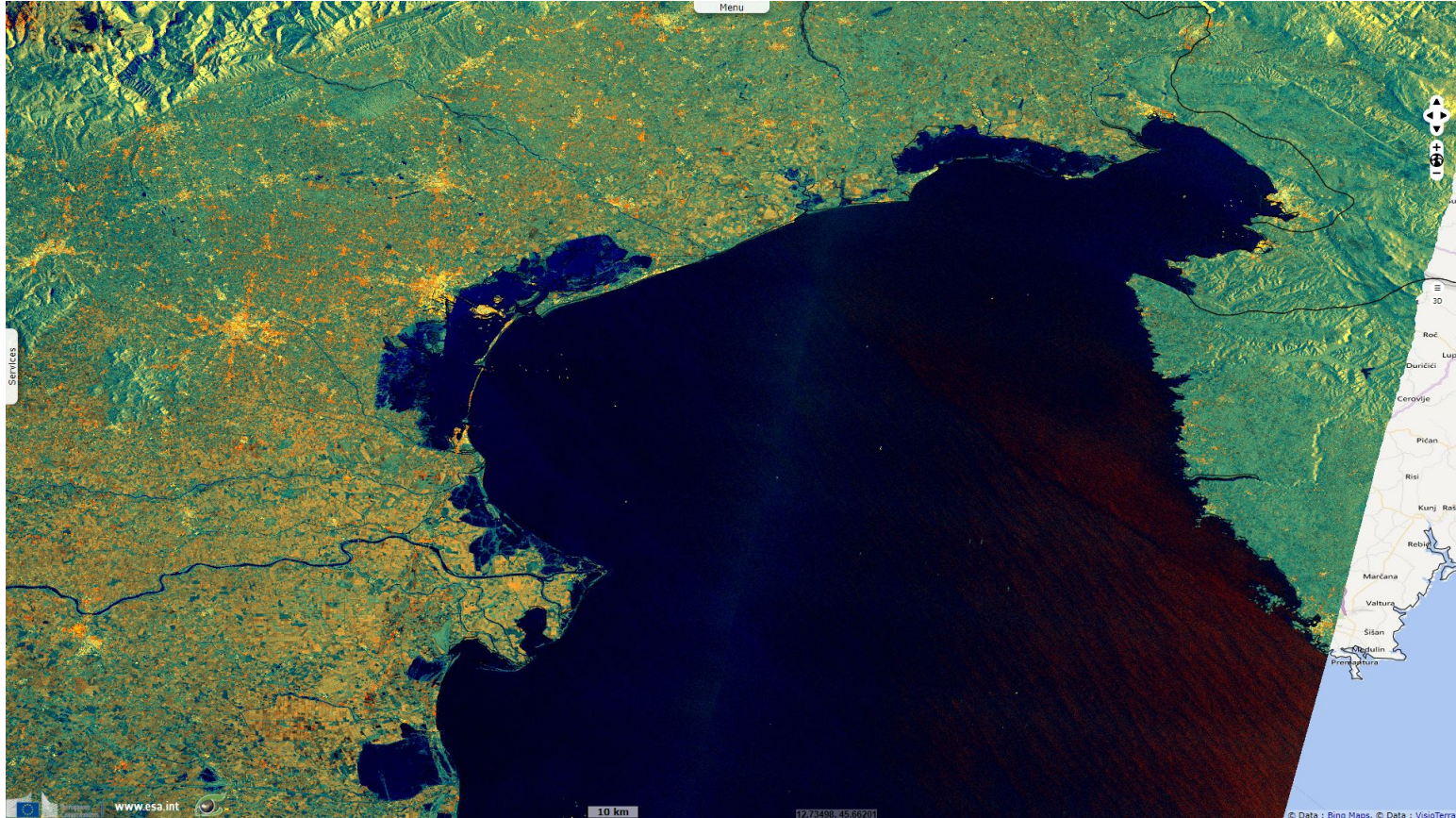
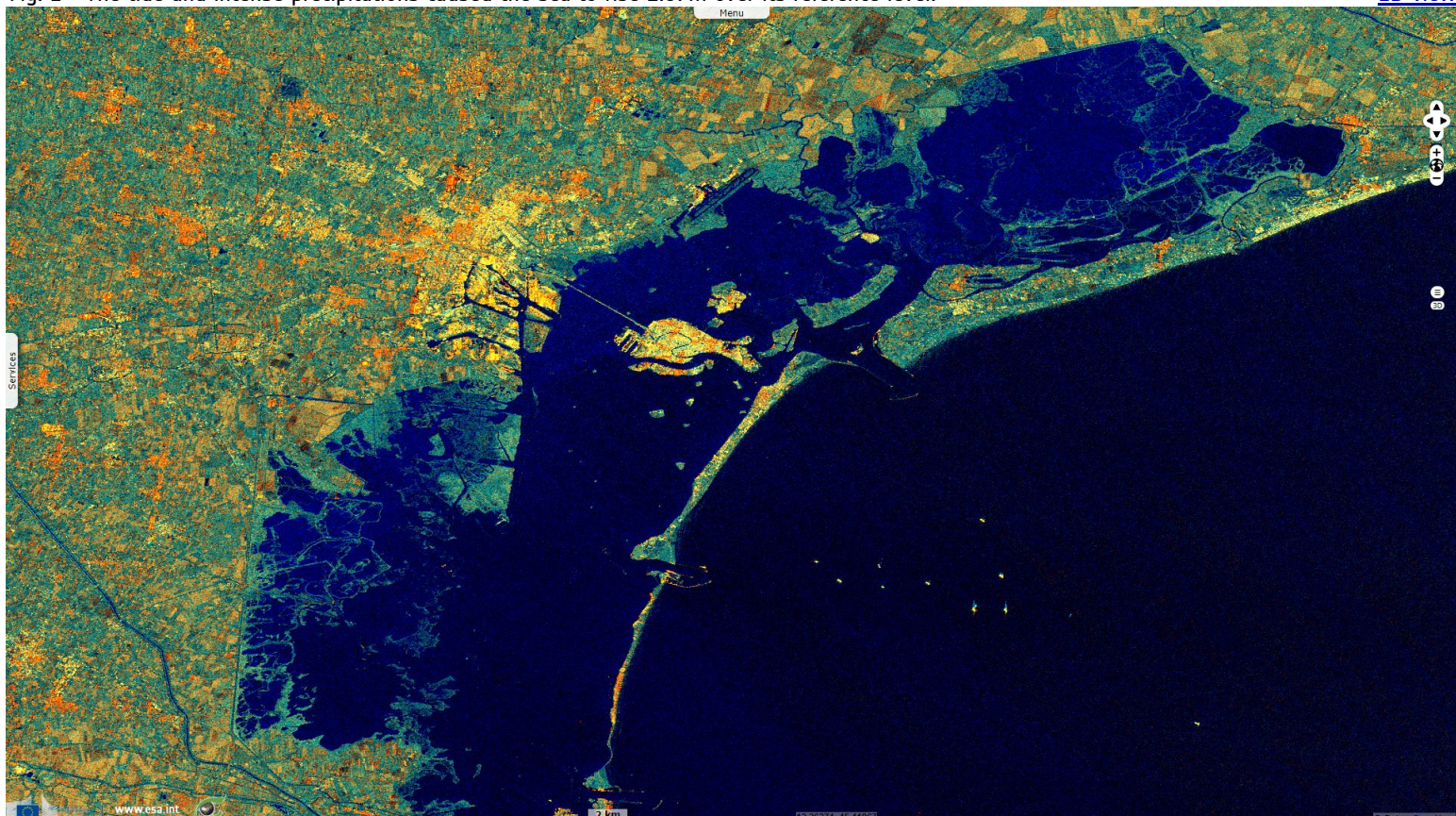


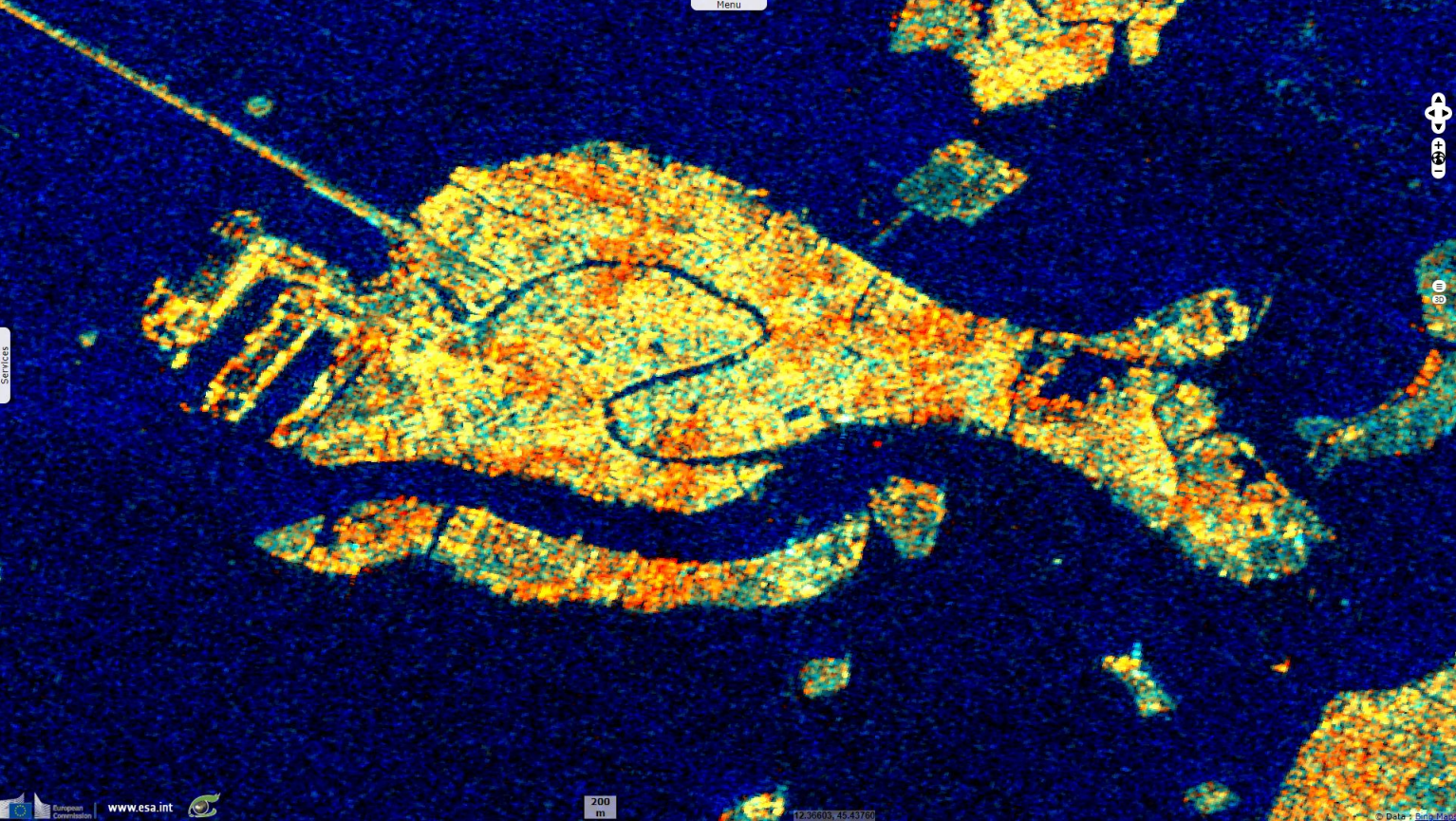
Fig. 2 - The tide and intense precipitations caused the sea to rise 1.87m over its reference level.

[2D view](#)



Such level had only be reached on 04.11.1966 when an acqua alta reached 1.94m.













Fig. 3 - Three days later, the water rose to an unusual level again, reaching 1.54m. [2D view](#)



The major of Venice was forced to close the famed Piazza San Marco; the total costs of the flood could reach hundreds of millions of euros.

The views expressed herein can in no way be taken to reflect the official opinion of the European Space Agency or the European Union.

Contains modified Copernicus Sentinel data 2019, processed by VisioTerra.

More on European Commission space:							
More on ESA:				S-1 website	S-2 website	S-3 website	
More on Copernicus program:				SciHub portal	Cophub portal	Inthub portal	Colhub portal
More on VisioTerra:				Sentinel Vision Portal	Envisat+ERS portal	Swarm+GOCE portal	CryoSat portal