



[2D Layerstack](#)

Itaipu dam, World's 2nd largest power station, Paraguay, Brazil

Sentinel-2 MSI acquired on **16 April 2016** at 13:40:42 UTC
Sentinel-2 MSI acquired on **06 April 2018** at 13:42:11 UTC
Sentinel-2 MSI acquired on **28 September 2019** at 13:42:11 UTC
Sentinel-1 CSAR IW acquired on **30 April 2020** at 09:03:34 UTC

Author(s): Sentinel Vision team, VisioTerra, France - syp@visioterra.fr

Keyword(s): Climate change, hydrology, hydropower, renewable energy, infrastructure, reservoir lake, climate change, Paraguay, Brazil

Fig. 1 - S2 (06.04.2018) - The Itaipu hydroelectric power plant is located on the Rio Paraná, on the border between Brazil and Paraguay.

[2D view](#)

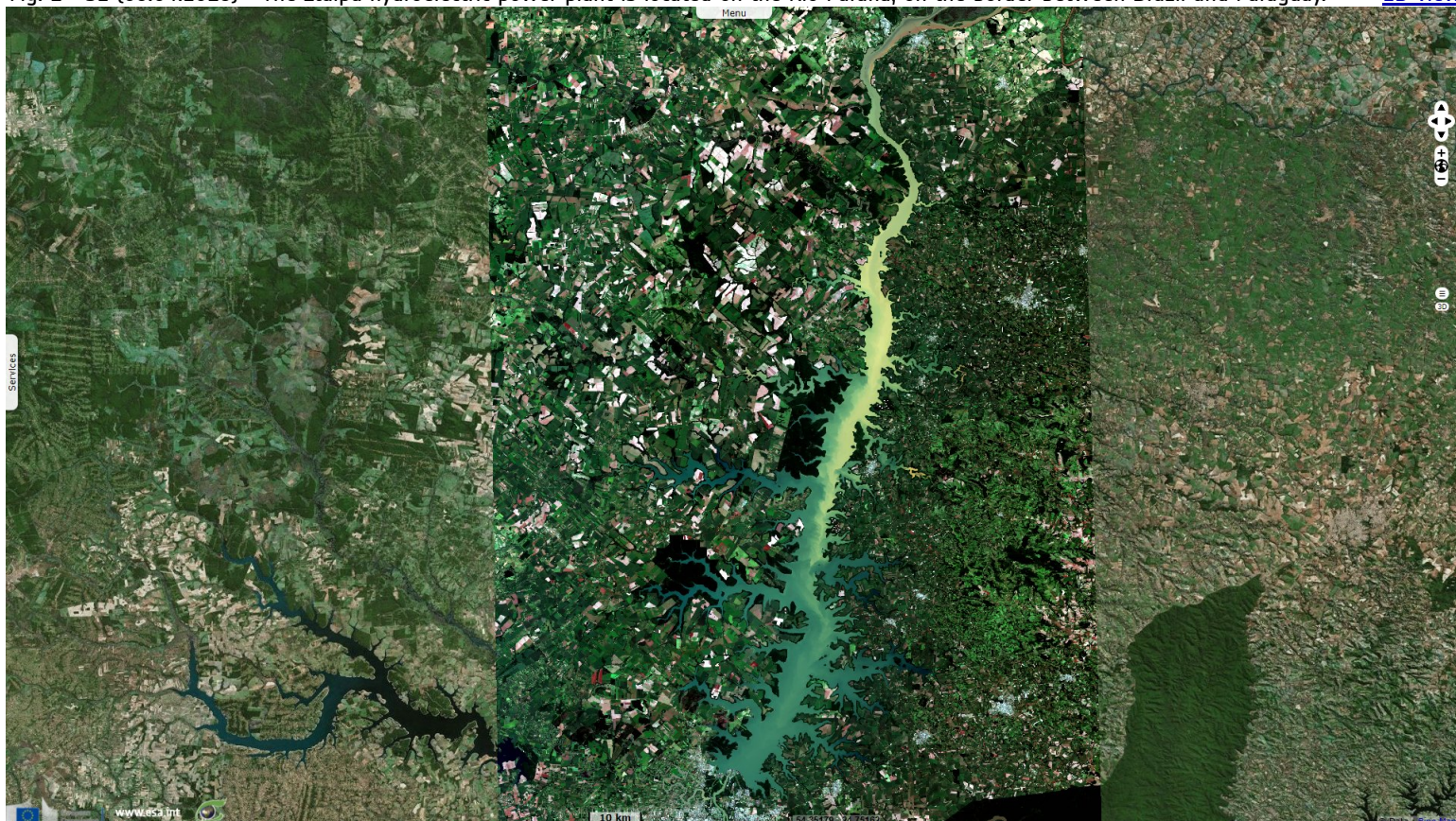
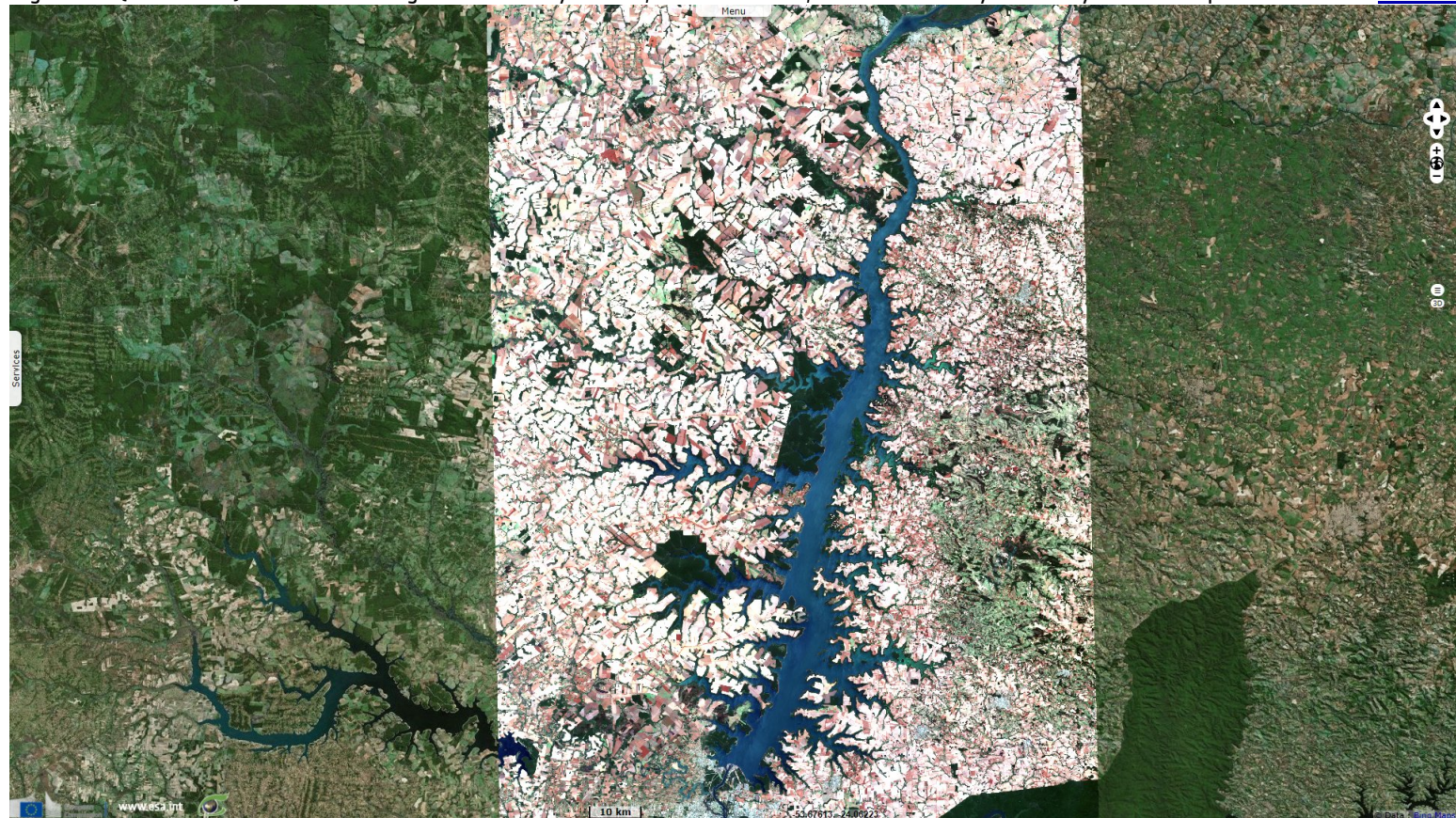


Fig. 2 - S2 (28.09.2019) - The world's largest waterfall by volume, the Guaíra Falls, was inundated by the newly formed Itaipu reservoir.

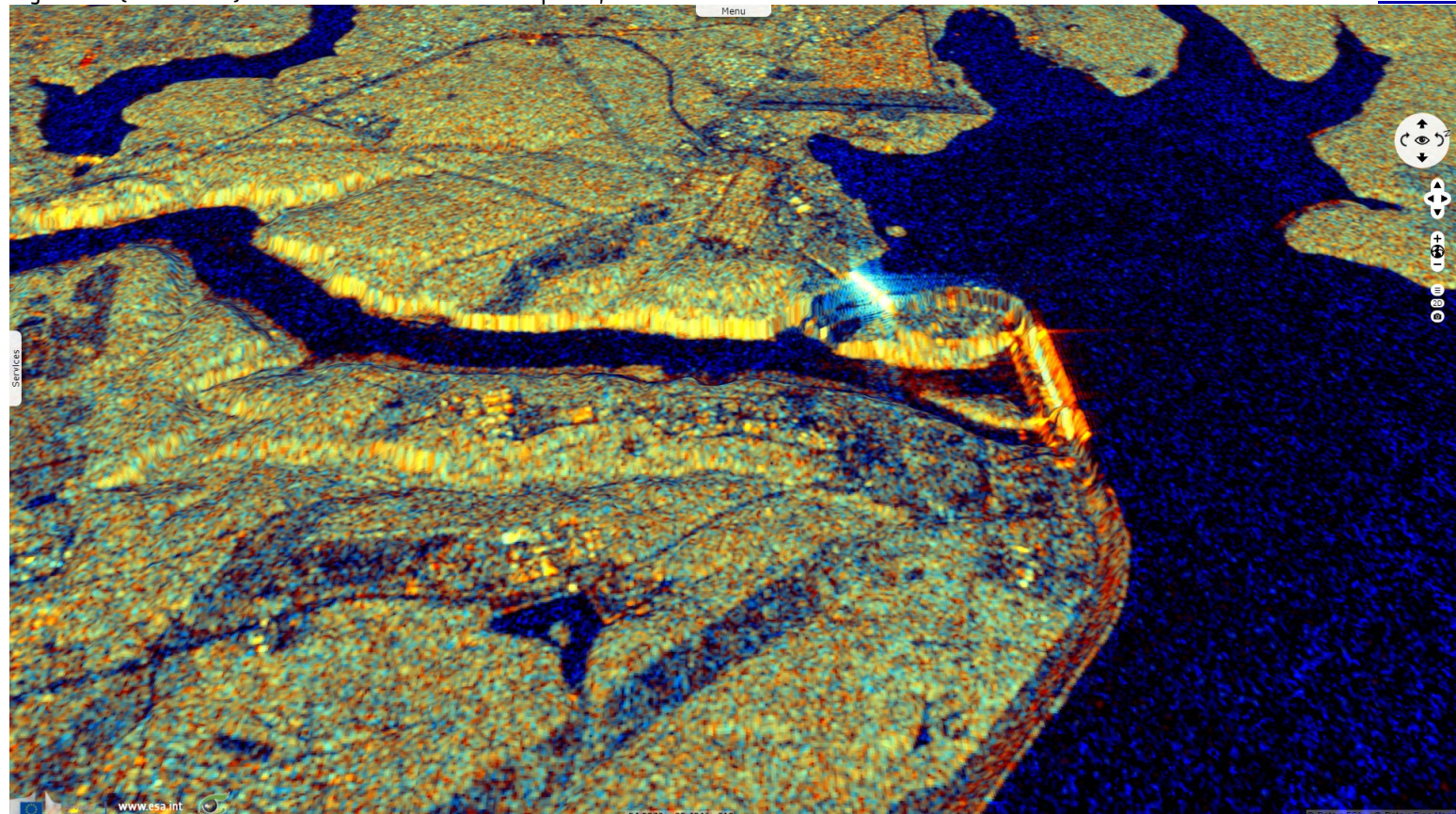
[2D view](#)



It was built between 1975 and 1982. The reservoir began its formation on October 13, 1982. The plant started generating power in 1984.

Fig. 3 - S1 (30.04.2020) - For the 14 000 MW installed power, 1350 km² were flooded.

[3D view](#)



The iron and steel used would allow for the construction of 380 Eiffel Towers. The volume of excavation of earth and rock in Itaipu is 8.5 times greater than that of the Channel Tunnel and the volume of concrete is 15 times greater.

Fig. 4 - S2 (16.04.2016) - The dam is 196 m high, equivalent to a 65-story building. It is 8 km long, with a reservoir volume of 29 km³. [3D view](#)















In the period 2010-2019, the Itaipu Dam maintained the highest average annual hydroelectric production in the world averaging 92.7 TWh per year

Fig. 5 - L5 (18.07.1984) - This image acquired soon after the production started shows large mount of water flowing from the spillway. [3D view](#)



In 1994, the American Society of Civil Engineers elected the Itaipu Dam as one of the seven modern Wonders of the World.

*The views expressed herein can in no way be taken to reflect the official opinion of the European Space Agency or the European Union.
Contains modified Copernicus Sentinel data 2021, processed by VisioTerra.*

More on European Commission space:							
More on ESA:				S-1 website	S-2 website	S-3 website	
More on Copernicus program:				SciHub portal	Cophub portal	Inthub portal	Colhub portal
More on VisioTerra:				Sentinel Vision Portal	Envisat+ERS portal	Swarm+GOCE portal	CryoSat portal

