

# Super typhoon Hinnamnor hits east of Asia

Sentinel-3 SLSTR RBT acquired on 29 August 2022 from 11:43:33 to 11:46:33 UTC

...

Sentinel-3 SLSTR RBT acquired on 01 September 2022 from 12:06:00 to 13:49:59 UTC

Sentinel-3 SLSTR RBT acquired on 03 September 2022 from 12:54:38 to 13:00:38 UTC

Sentinel-3 SLSTR RBT acquired on 05 September 2022 from 13:43:16 to 13:46:16 UTC

Author(s): Sentinel Vision team, VisioTerra, France - [svp@visioterra.fr](mailto:svp@visioterra.fr)

Keyword(s): Emergency, weather, cyclone, typhoon, precipitation, Taiwan, China, South Korea, Japan, Philippines



[3D Layerstack](#)

Fig. 1 - Typhoon Hinnamnor was the first Cat-5 typhoon of the 2022 Pacific typhoon season with sustained winds of 260 km/h.

[3D view](#) [3D view](#)

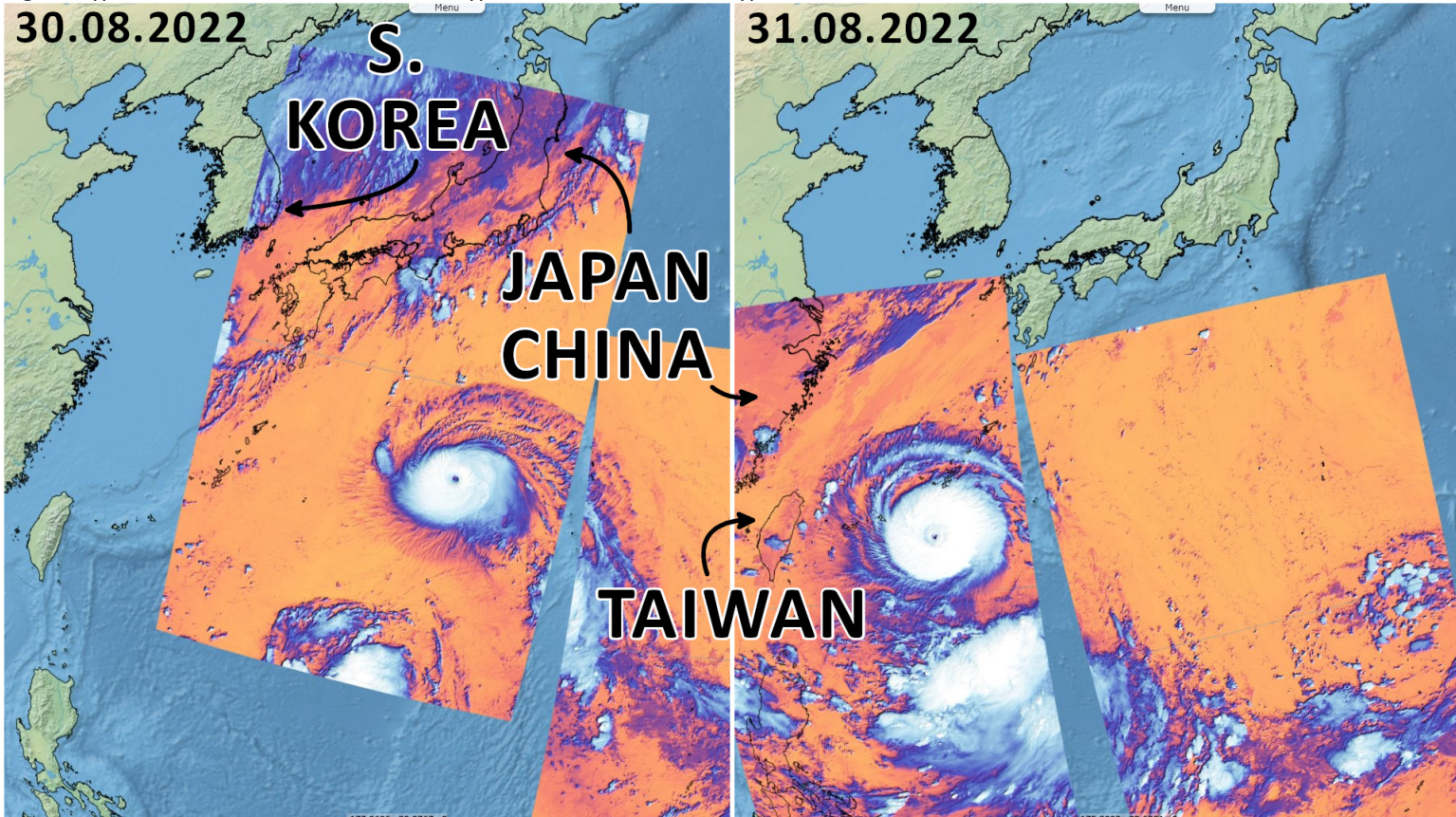


Fig. 2 - It first made west for the Philippines, then Taiwan before going north bordering China, Japan and made landfall on S. Korea.

[3D view](#) [3D view](#)

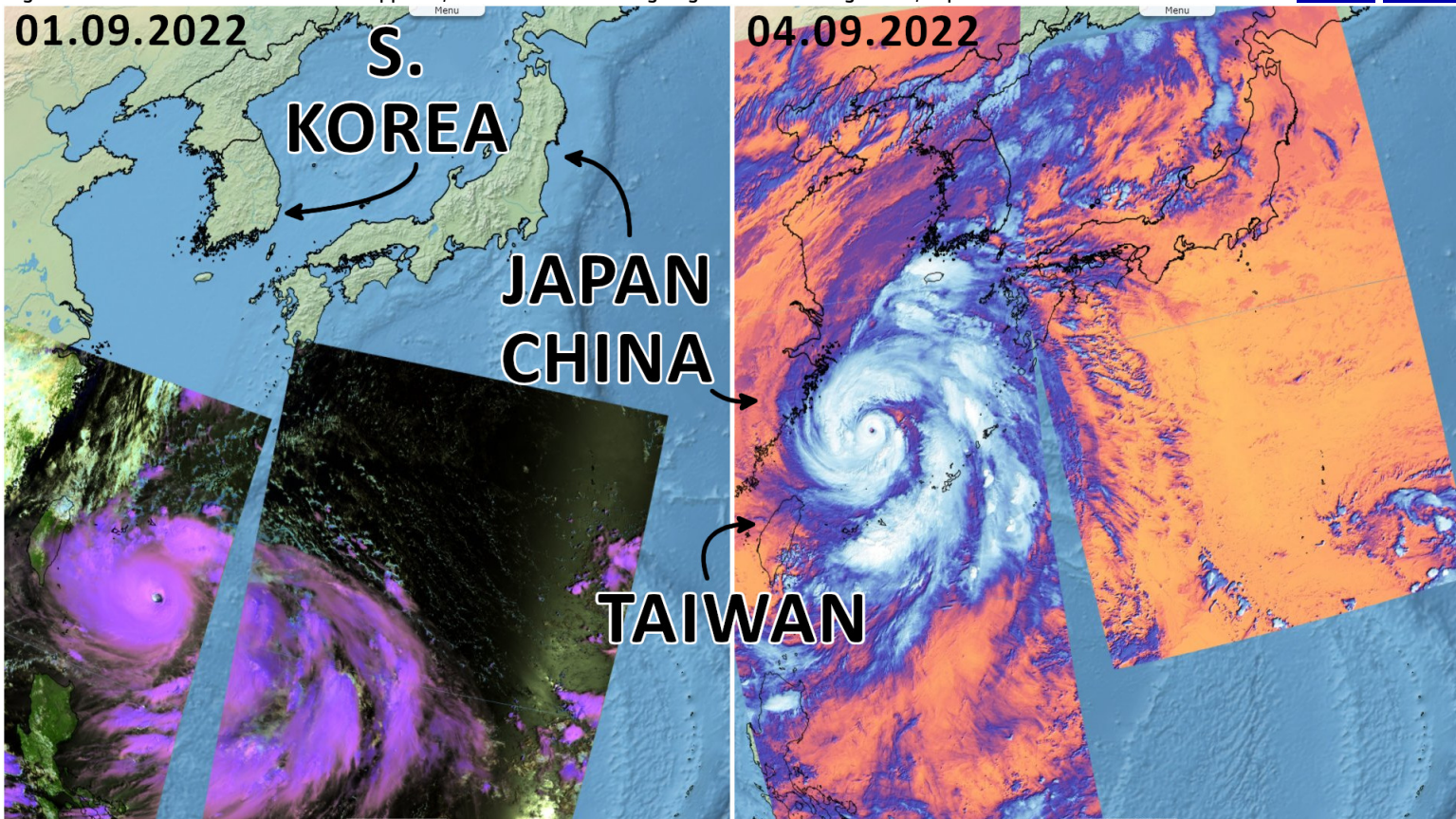
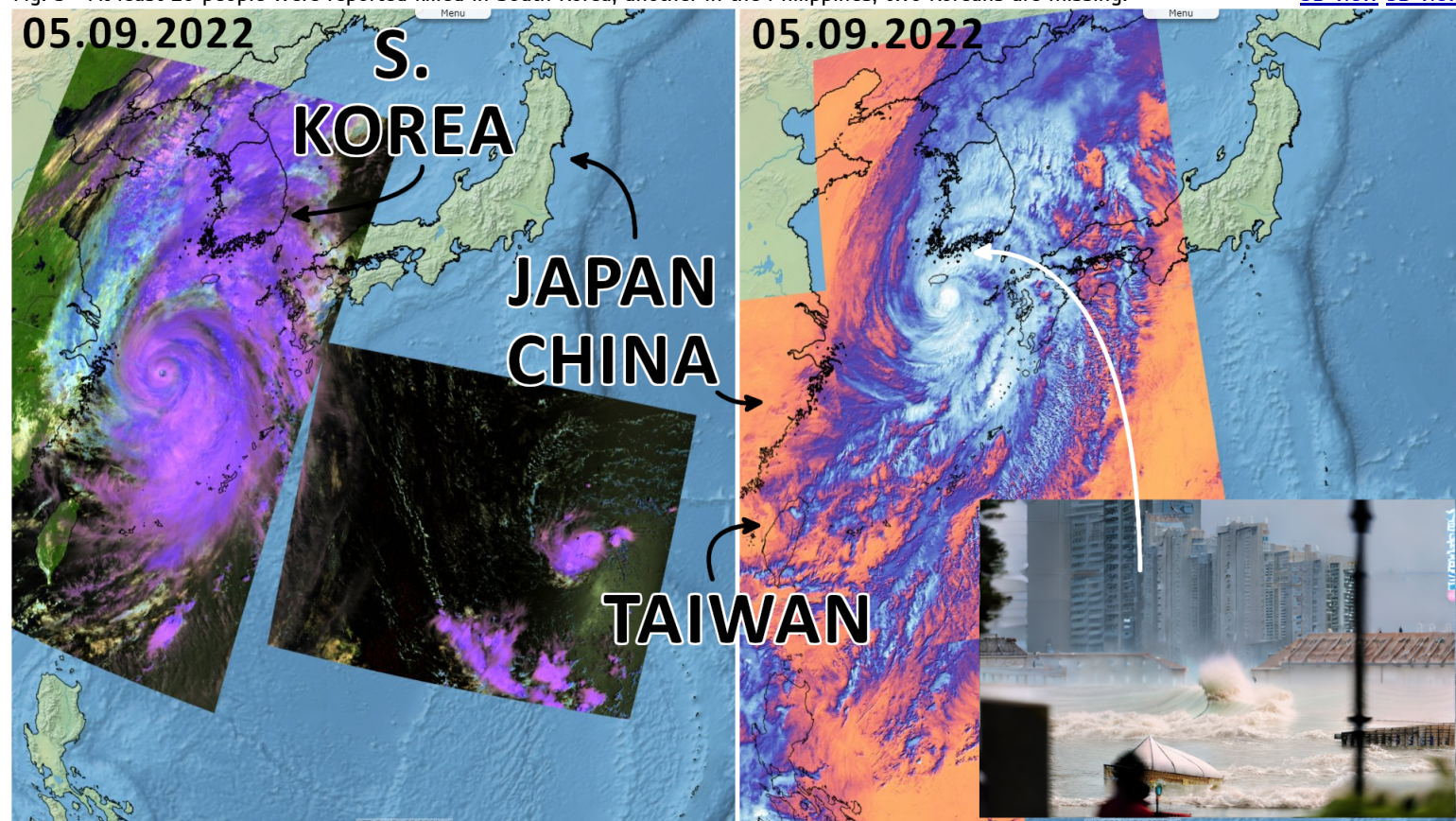


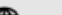


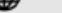
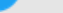

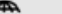


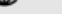
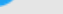



Fig. 3 - At least 10 people were reported killed in South Korea, another in the Philippines; two Koreans are missing.

[3D view](#) [3D view](#)



*The views expressed herein can in no way be taken to reflect the official opinion of the European Space Agency or the European Union.  
Contains modified Copernicus Sentinel data 2022, processed by VisioTerra.*

More on European Commission space:							
More on ESA:				<a href="#">S-1 website</a>	<a href="#">S-2 website</a>	<a href="#">S-3 website</a>	
More on Copernicus program:				<a href="#">Scihub_portal</a>	<a href="#">Cophub_portal</a>	<a href="#">Inthub_portal</a>	<a href="#">Colhub_portal</a>
More on VisioTerra:				<a href="#">Sentinel Vision Portal</a>	<a href="#">Envisat+ERS_portal</a>	<a href="#">Swarm+GOCE_portal</a>	<a href="#">CryoSat_portal</a>