

Medina, holy city near an active lava field, Saudi Arabia

Sentinel-1 CSAR IW acquired on 04 November 2015 from 03:12:55 to 03:13:20 UTC

...

Sentinel-1 CSAR IW acquired on 25 November 2016 from 15:20:47 to 15:21:12 UTC

Sentinel-2 MSI acquired on 16 December 2017 at 08:03:19 UTC

Sentinel-2 MSI acquired on 18 December 2017 at 07:53:31 UTC

Author(s): Sentinel Vision team, VisioTerra, France - svp@visioterra.fr

Keyword(s): Urban, mountain range, volcanism, geohazard, geology, reg, lava field, Saudi Arabia, Red Sea rift.



[2D Layerstack](#)

Fig. 1 - S1 (11.04.2015) - 250 km away from the coast, 620 m high, Medina is Saudi Arabia's 4th biggest city with 1 500 000 inhabitants.

[2D view](#)

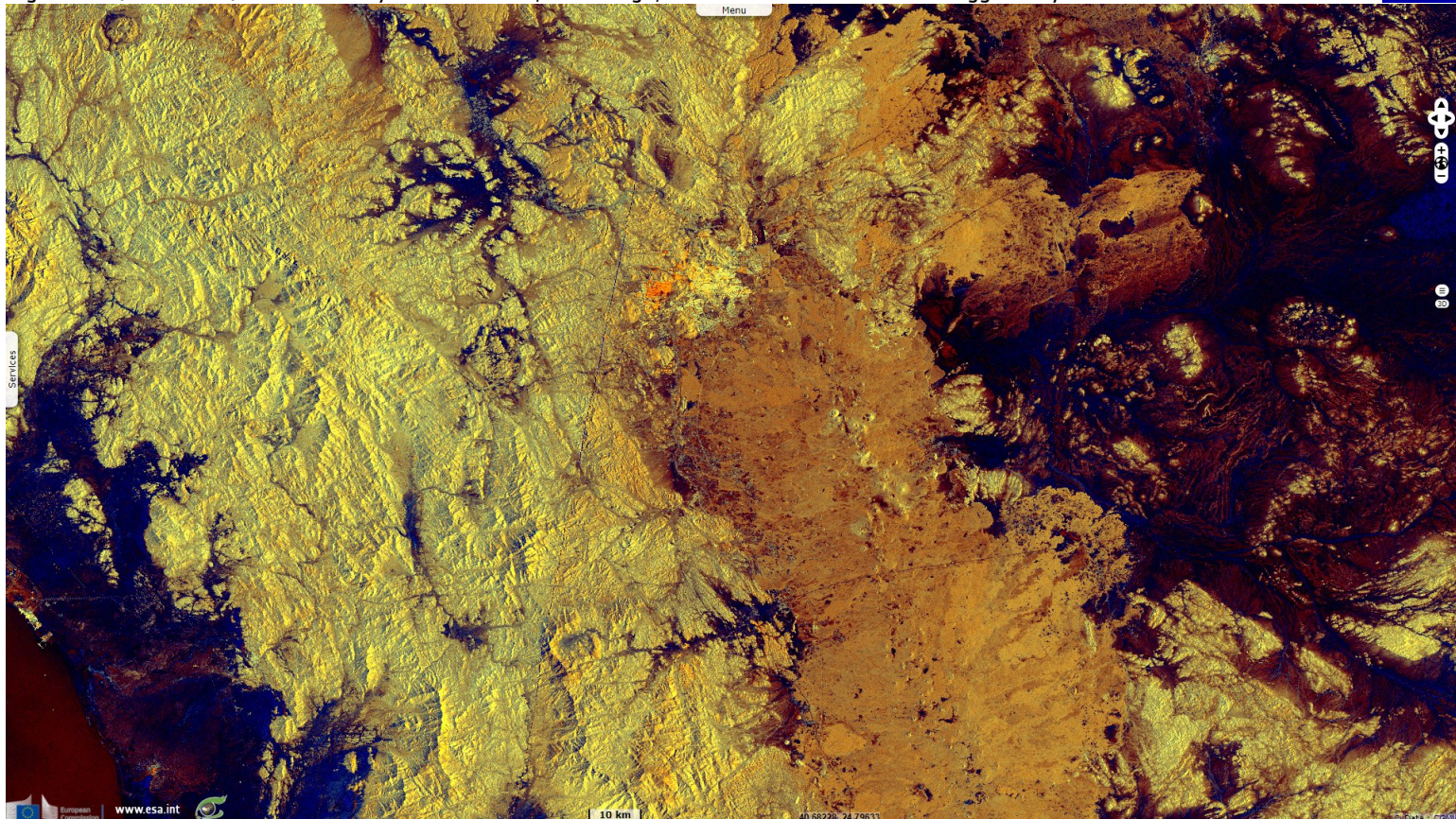


Fig. 2 - S2 (18.12.2017) - It is the second holiest city of Islam after Mecca, it is home to the Prophet's Mosque.

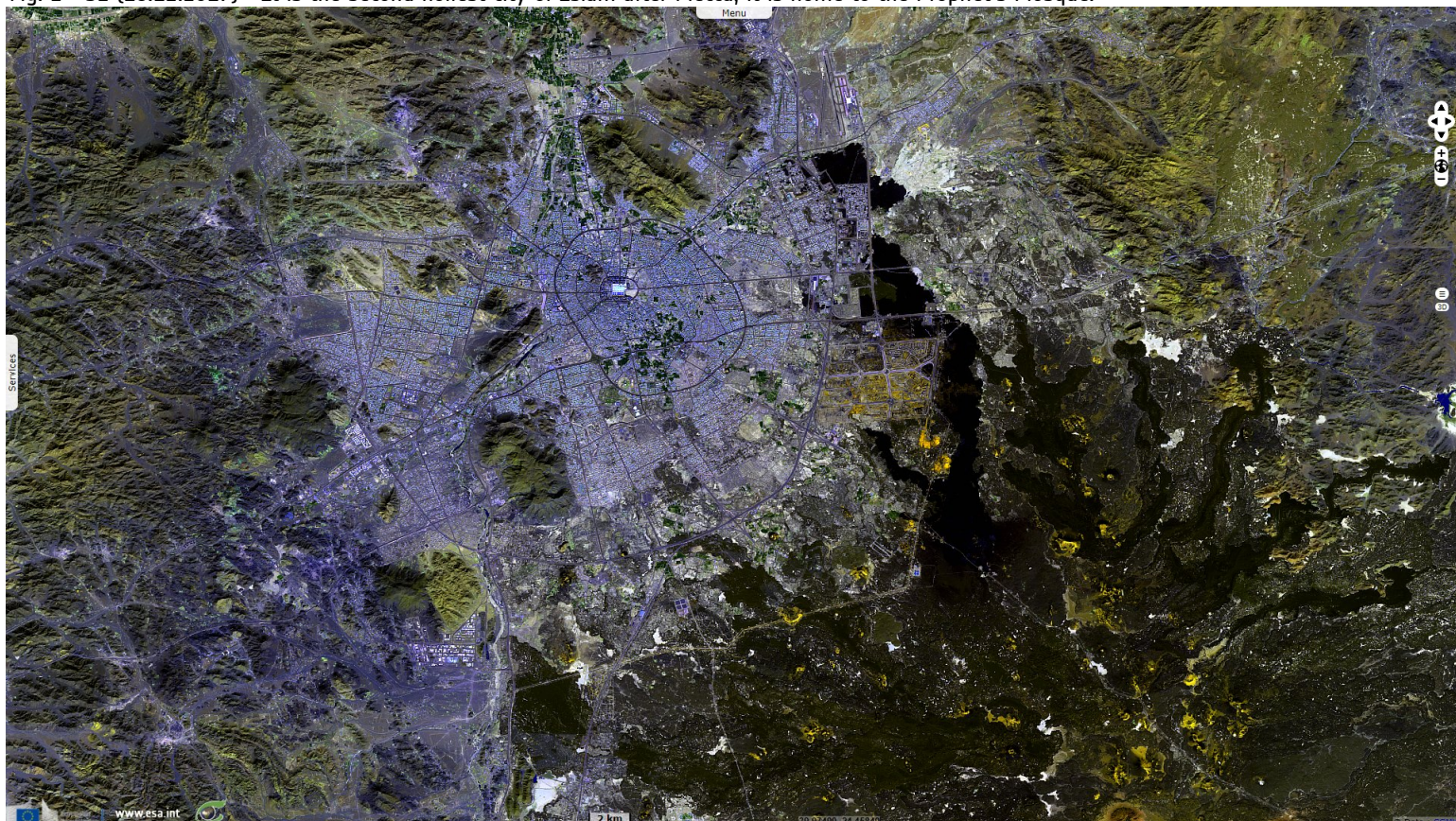


Fig. 3 - S1 (13.09.2016 & 25.11.2016) - It lies within the Hejaz mountain range, next to the biggest lava field in Saudi Arabia, Harrat Rahat. [3D view](#)

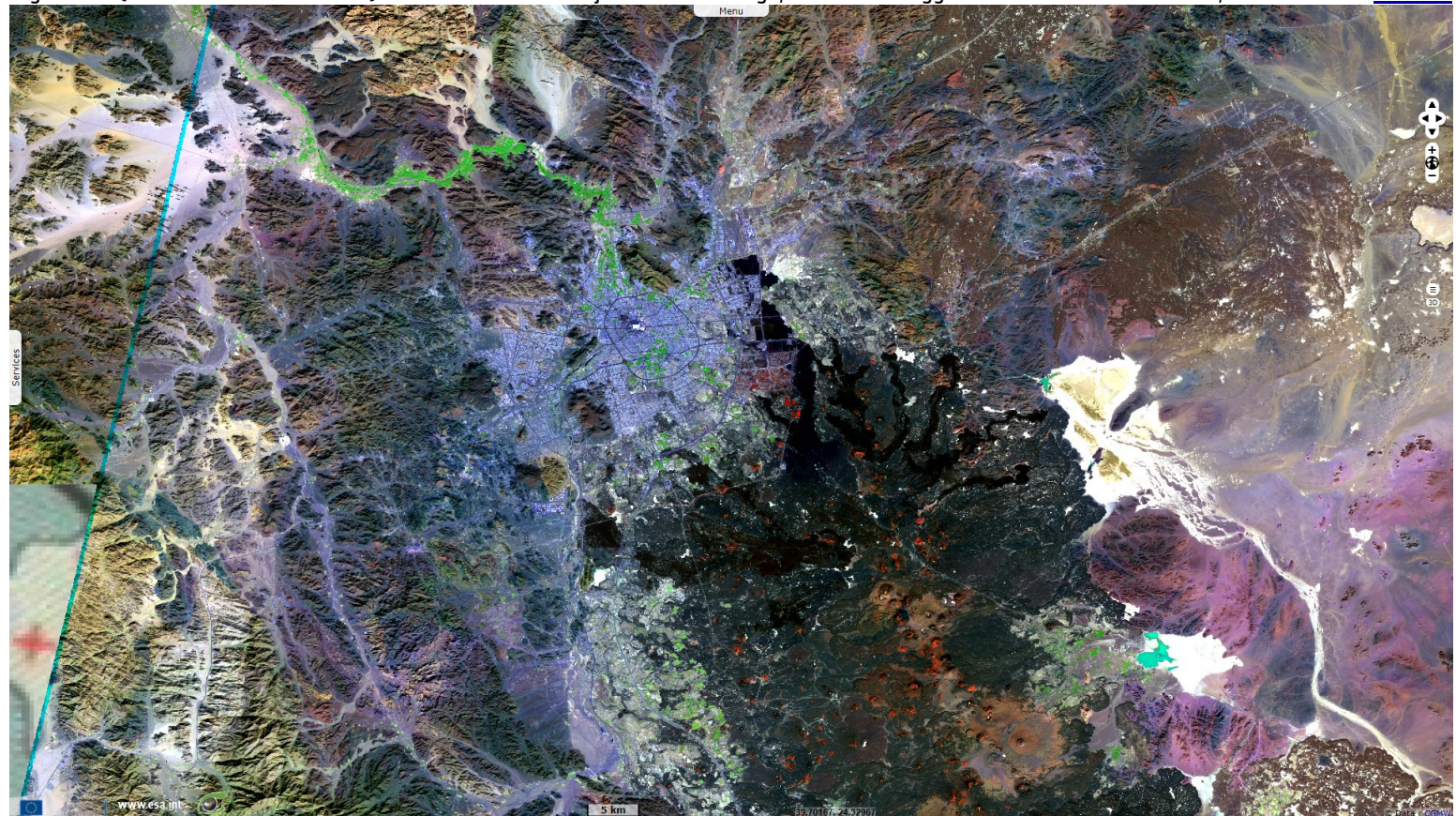
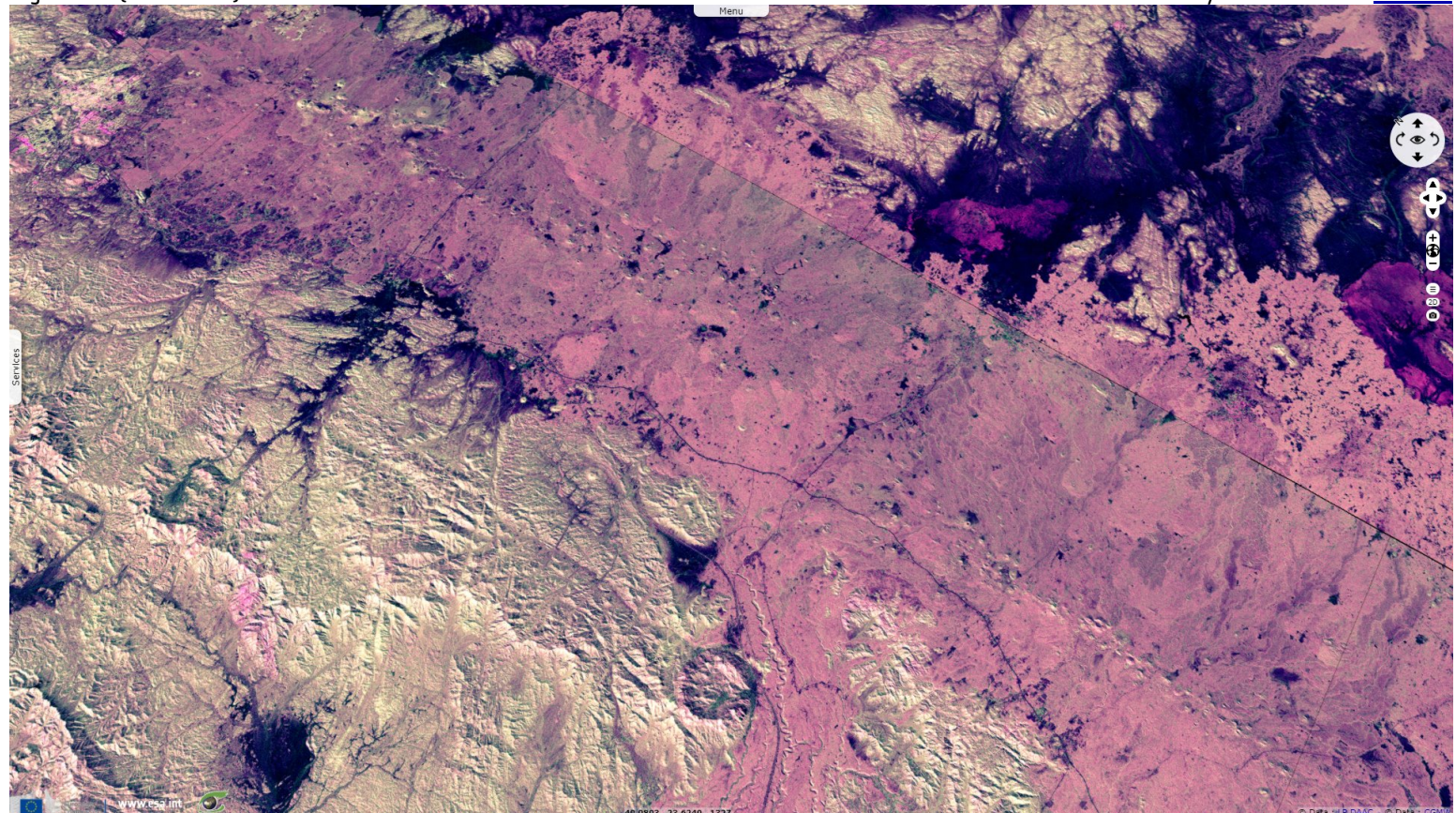














Fig. 4 - S2 (18.12.2017) - Harrat Rahat threatened Medina in 1256 when a lava flow traveled 23 km to within 4 km of the city. [2D view](#)



*The views expressed herein can in no way be taken to reflect the official opinion of the European Space Agency or the European Union.
Contains modified Copernicus Sentinel data 2020, processed by VisioTerra.*

More on European Commission space:						
More on ESA:				S-1 website	S-2 website	S-3 website
More on Copernicus program:				SciHub portal	Cophub portal	Inthub portal
More on VisioTerra:				Sentinel Vision Portal	Envisat+ERS portal	Swarm+GOCE portal
				CryoSat portal		