

Typhoon Doksuri batters Philippines and China

Sentinel-3 SLSTR RBT acquired on 24 July 2023 from 01:07:45 to 01:52:40 UTC

Sentinel-3 SLSTR RBT acquired on 25 July 2023 from 13:27:27 to 14:12:23 UTC

Sentinel-3 SLSTR RBT acquired on 27 July 2023 from 01:30:11 to 02:12:06 UTC

Sentinel-3 SLSTR RBT acquired on 30 July 2023 from 01:46:38 to 02:31:32 UTC

Author(s): Sentinel Vision team, VisioTerra, France - svp@visioterra.fr

Keyword(s): Cyclone, hurricane, weather, climate change, atmosphere, wind, rainfall, precipitation, Philippines, China, Pacific Ocean



[2D Layerstack](#)

Fig. 1 - S3 SLSTR (24.07.2023 am) - Reaching cat-4, typhoon Doksuri caused extensive damage in the Philippines, Taiwan, and China.

[3D view](#) [2D animation](#)

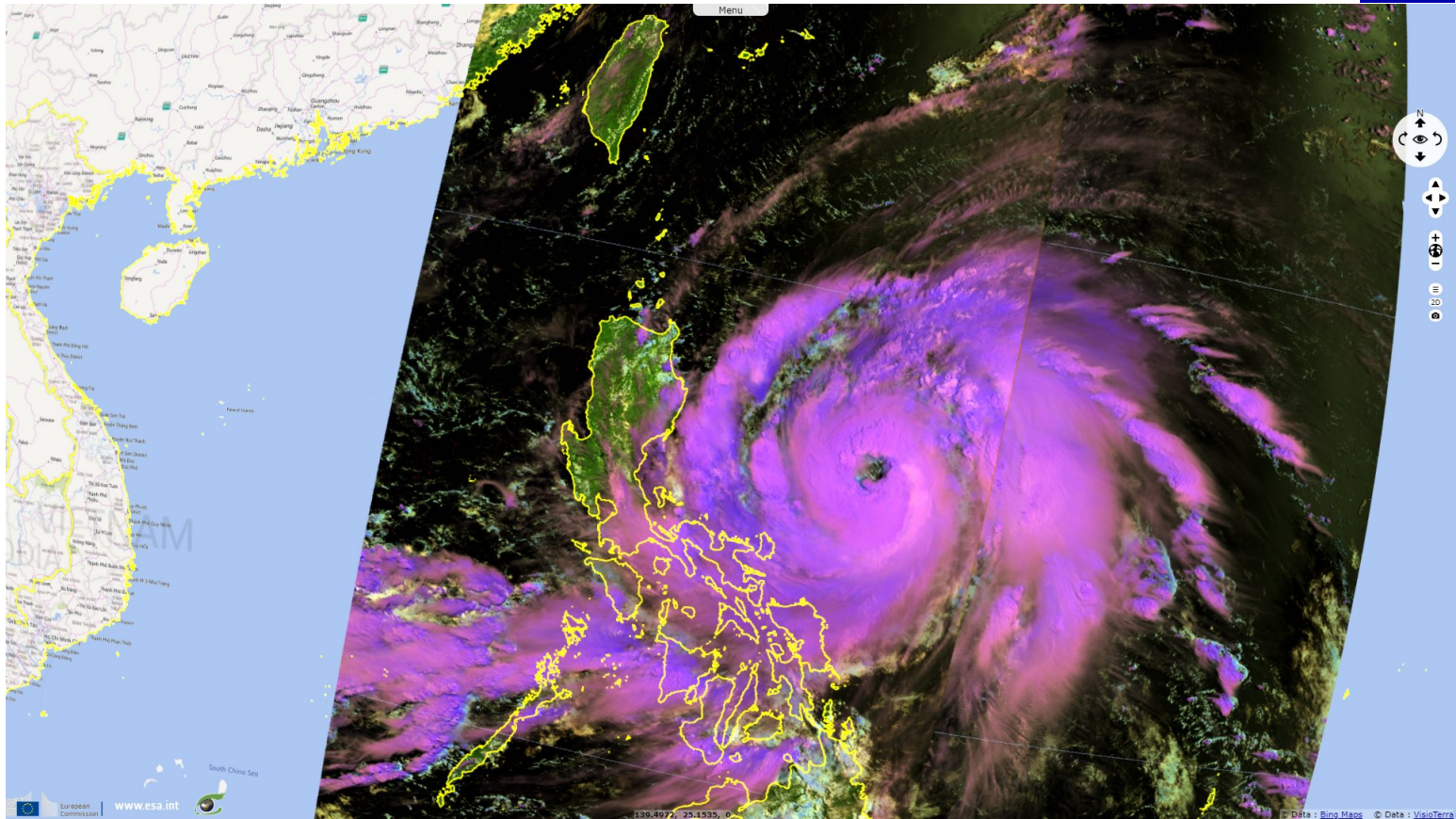


Fig. 2 - S3 SLSTR (25.07.2023 pm) - It rapidly intensified over the Philippines prior to making landfall over the Babuyan Islands.

[3D view](#) [2D animation](#)

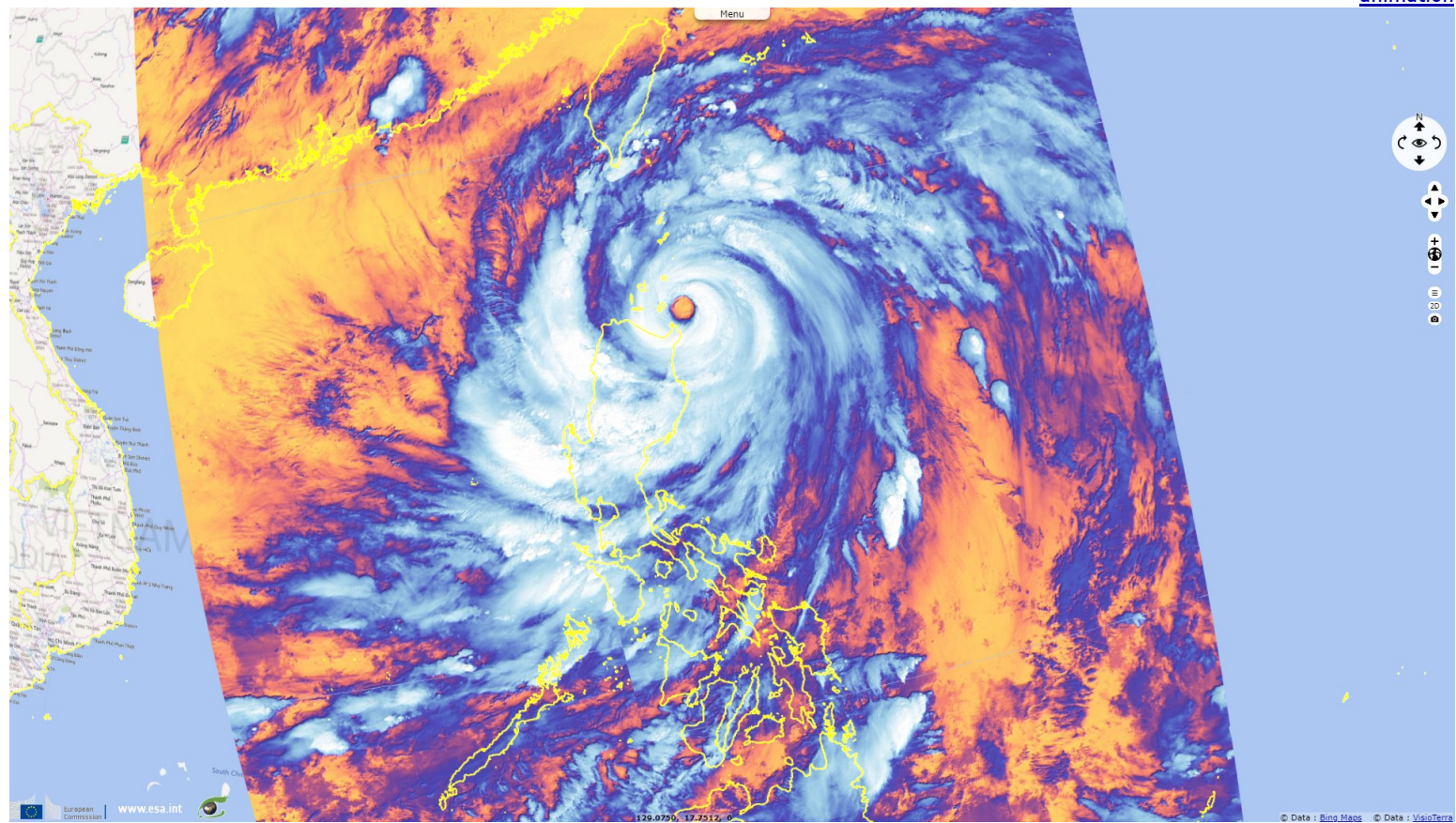


Fig. 3 - S3 SLSTR (27.07.2023 am) - Its remnant dropped up to 744.8 mm of rainfall west of Beijing, a maximum since first recordings in 1883.

[3D view](#) [2D animation](#)

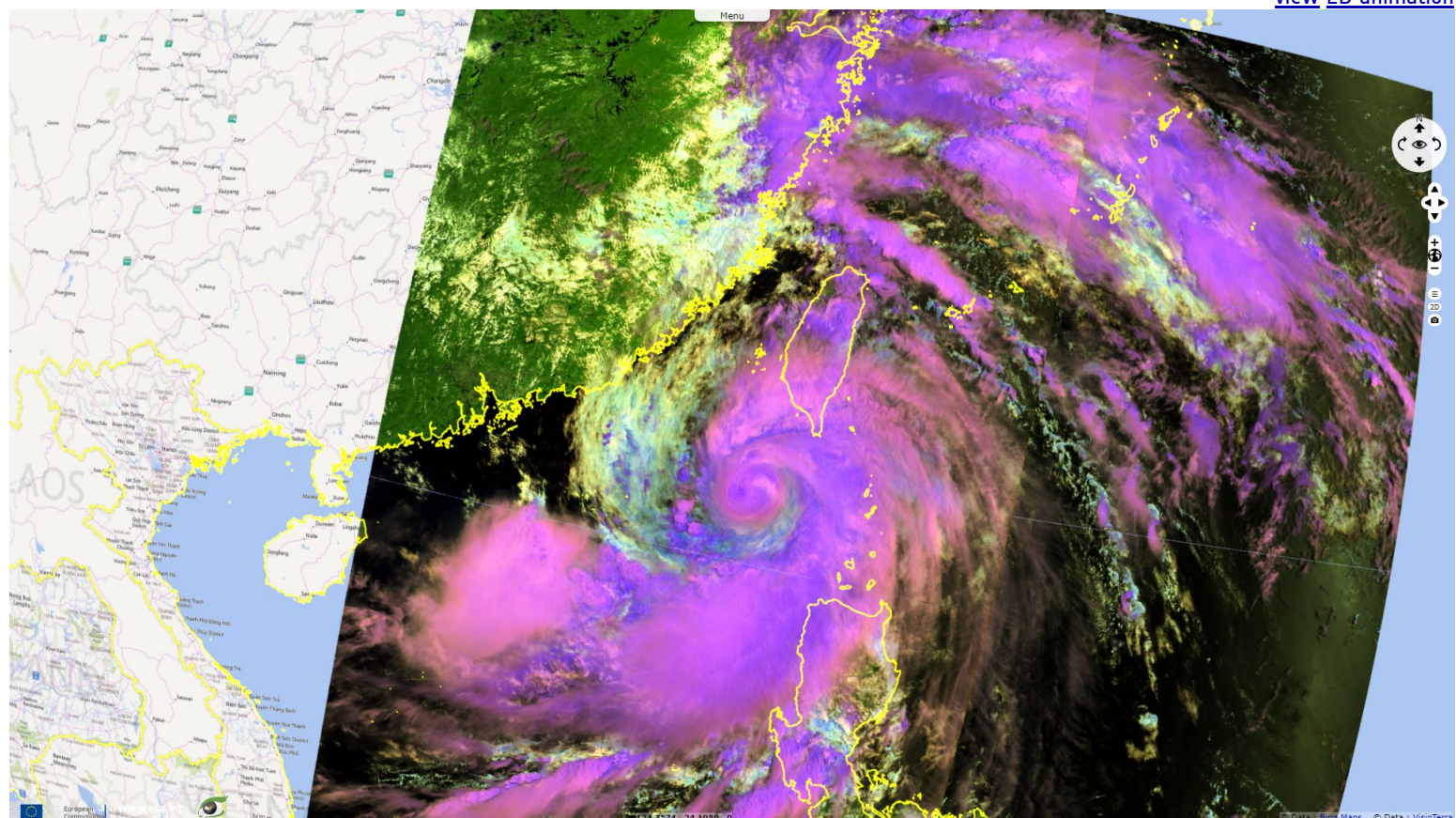
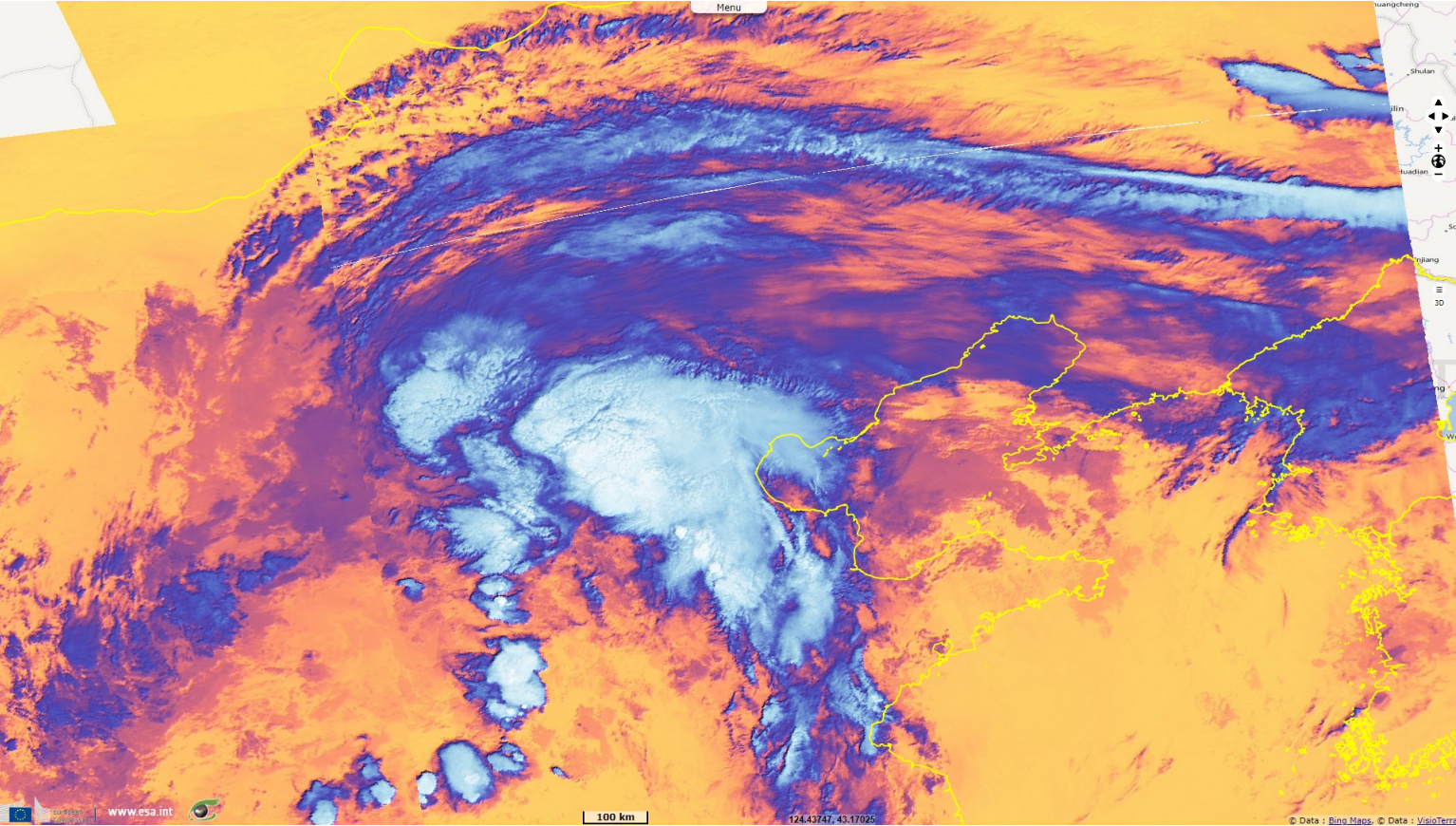














Fig. 4 - S3 SLSTR (30.07.2023 am) - Beijing issued its highest alerts for flooding and landslides. Doksuri killed 87, left 237 missing and 204 injured. [2D view](#) [2D animation](#)



*The views expressed herein can in no way be taken to reflect the official opinion of the European Space Agency or the European Union.
Contains modified Copernicus Sentinel data 2023, processed by VisioTerra.*

More on European Commission space:							
More on ESA:				S-1 website	S-2 website	S-3 website	
More on Copernicus program:				Scihub portal	Cophub portal	Inthub portal	Colhub portal
More on VisioTerra:				Sentinel Vision Portal	Envisat+ERS portal	Swarm+GOCE portal	CryoSat portal