

Bosumtwi crater lake, only natural lake in Ghana

Sentinel-1 CSAR IW acquired on 26 February 2018 at 18:17:08 UTC

Sentinel-1 CSAR IW acquired on 21 May 2018 at 18:17:11 UTC

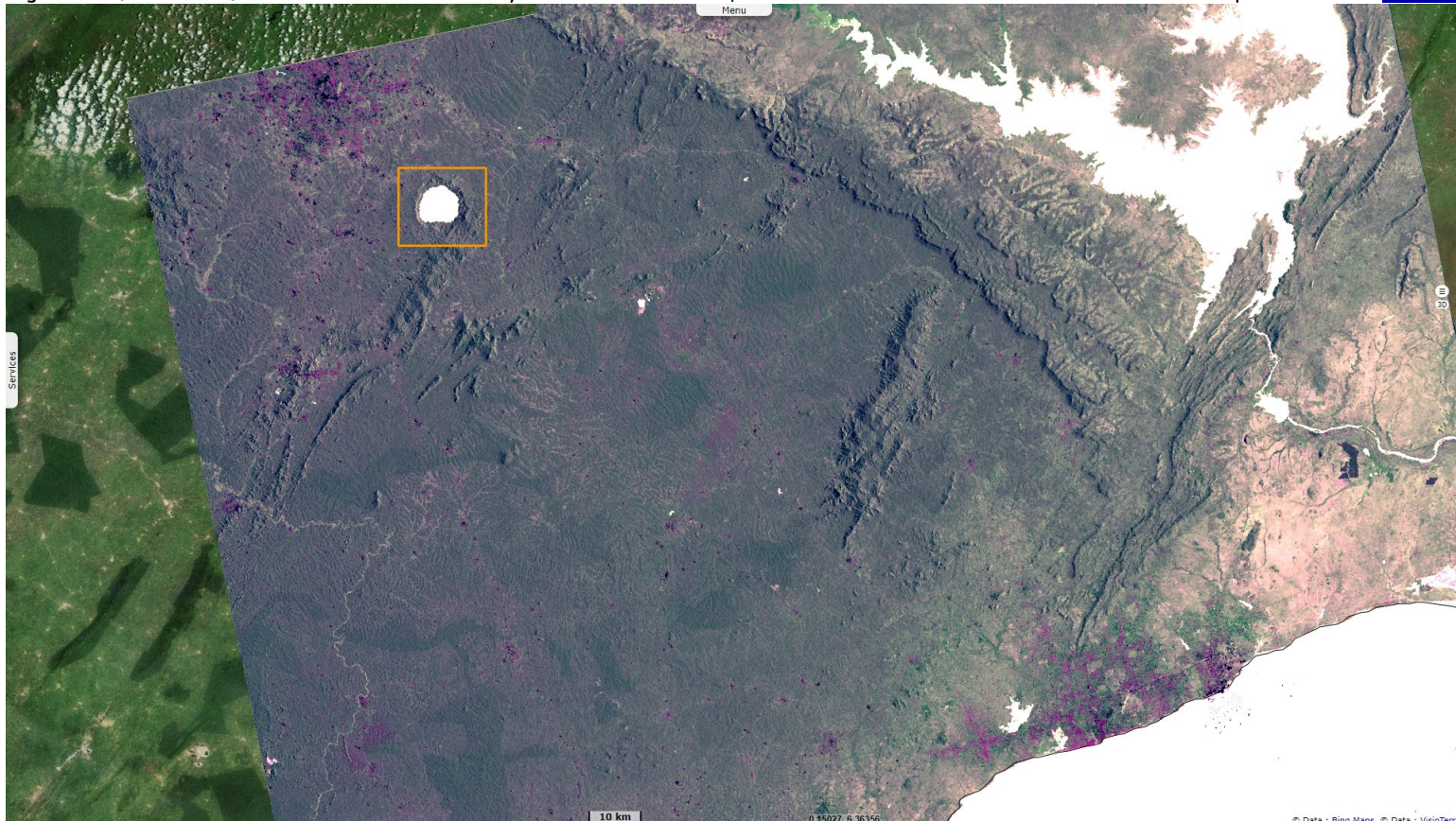
Sentinel-2 MSI acquired on 02 January 2020 at 10:24:21 UTC

Author(s): Sentinel Vision team, VisioTerra, France - syp@visioterra.fr

Keyword(s): Lake, impact crater, rainforest, Ghana

[2D Layerstack](#)

Fig. 1 - S1 (21.05.2018) - Lake Bosumtwi is the only natural lake in Ghana, it is located amid dense rainforest in an ancient impact crater. [2D view](#)



Lake Bosumtwi is about 49km² and 380m deep (750m with the sediments), its home crater is over 10 km in diameter.

Fig. 2 - S2 (02.01.2020) - It is located next to Kumasi aka "The Garden City", the second largest city in Ghana after the capital Accra. [3D view](#)

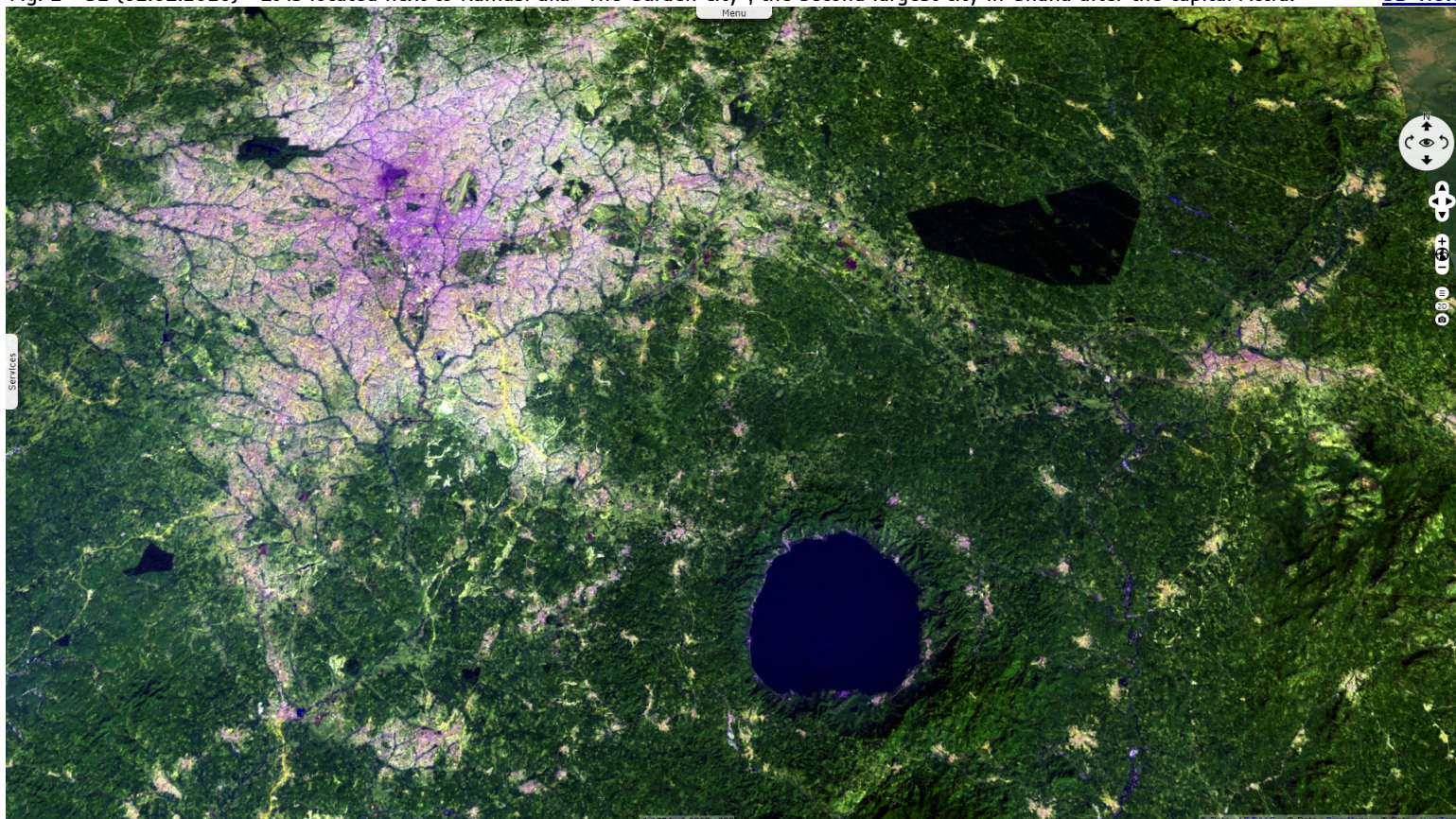














Fig. 3 - S1 (26.02.2018) - It is threatened by overfishing (leading to steadily decreasing catches), increasing deforestation & ensuing erosion. [3D view](#)



Fig. 4 - S2 (02.01.2020) - Many villages have been submerged several times, forcing relocation. [3D view](#)



*The views expressed herein can in no way be taken to reflect the official opinion of the European Space Agency or the European Union.
Contains modified Copernicus Sentinel data 2020, processed by VisioTerra.*

More on European Commission space:						
More on ESA:				S-1 website	S-2 website	S-3 website
More on Copernicus program:				SciHub portal	Cophub portal	Inthub portal
More on VisioTerra:				Sentinel Vision Portal	Envisat+ERS portal	Swarm+GOCE portal
				CryoSat portal		