

Flood on the northern shore of Java island, Indonesia

Sentinel-1 CSAR IW acquired on 27 January 2021 from 11:06:32 to 11:07:01 UTC
Sentinel-1 CSAR IW acquired on 28 January 2021 from 22:33:31 to 22:33:56 UTC

Sentinel-1 CSAR IW acquired on 20 February 2021 from 11:06:31 to 11:07:00 UTC
Sentinel-1 CSAR IW acquired on 21 February 2021 from 22:33:30 to 22:33:55 UTC

Author(s): Sentinel Vision team, VisioTerra, France - svp@visioterra.fr

Keyword(s): Emergency, natural disaster, flooding, precipitations, urban planning, Indonesia

[2D Layerstack](#)

Fig. 1 - S1 (16-21.02.2021) - The flood situation in Greater Jakarta, Indonesia, has worsened over the last 2 days.

[2D view](#) [2D animation](#)

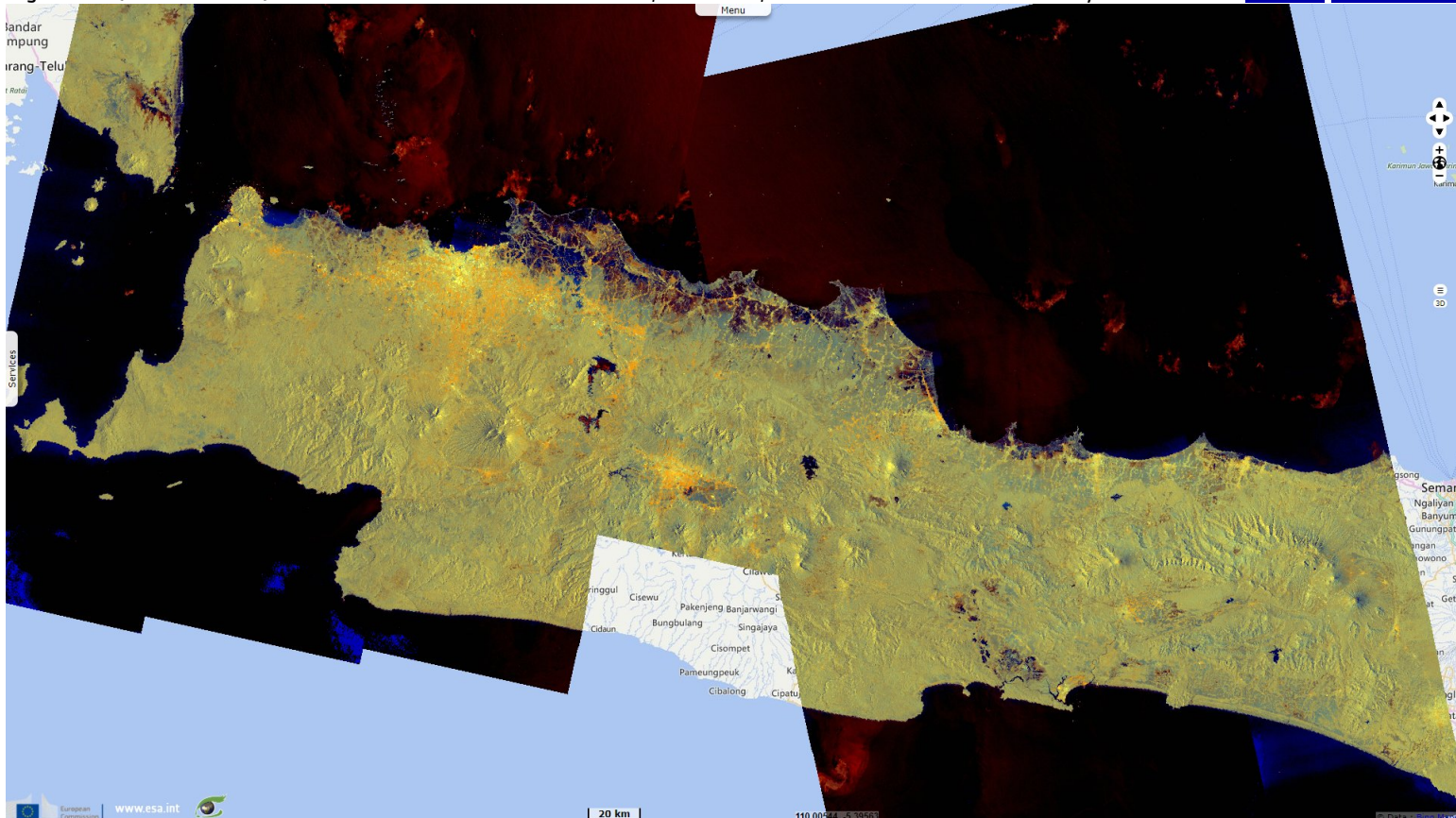


Fig. 2 - East of Jakarta, the capital of Indonesia. Over 8000 housing units were submerged and infrastructure damaged.

[2D animation](#)

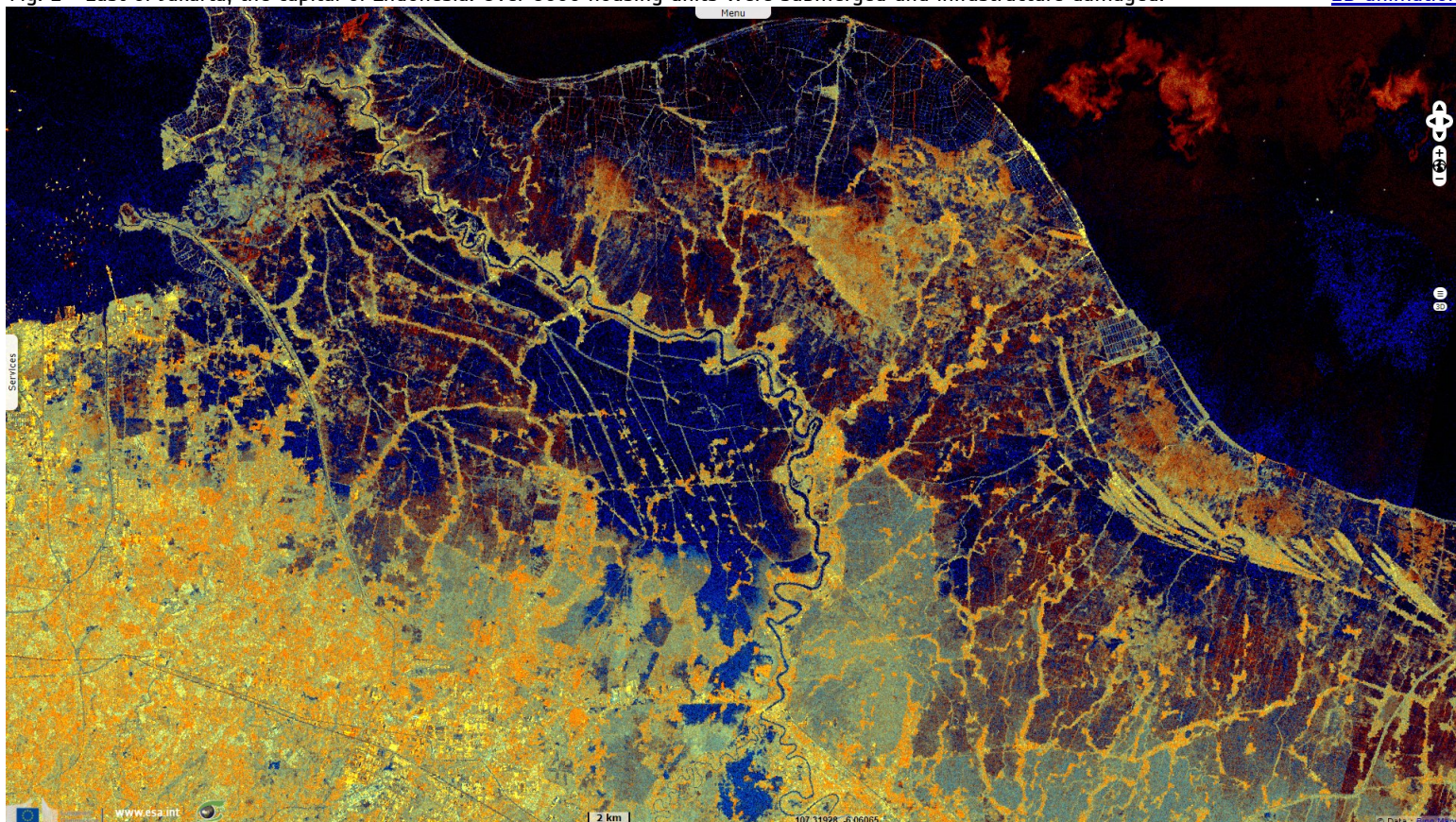


Fig. 3 - Indramaya & Karangampel, north of Cerebon. As of 22 Feb., 176000 people were affected, 19000 displaced, at least 5 died. [2D animation](#)

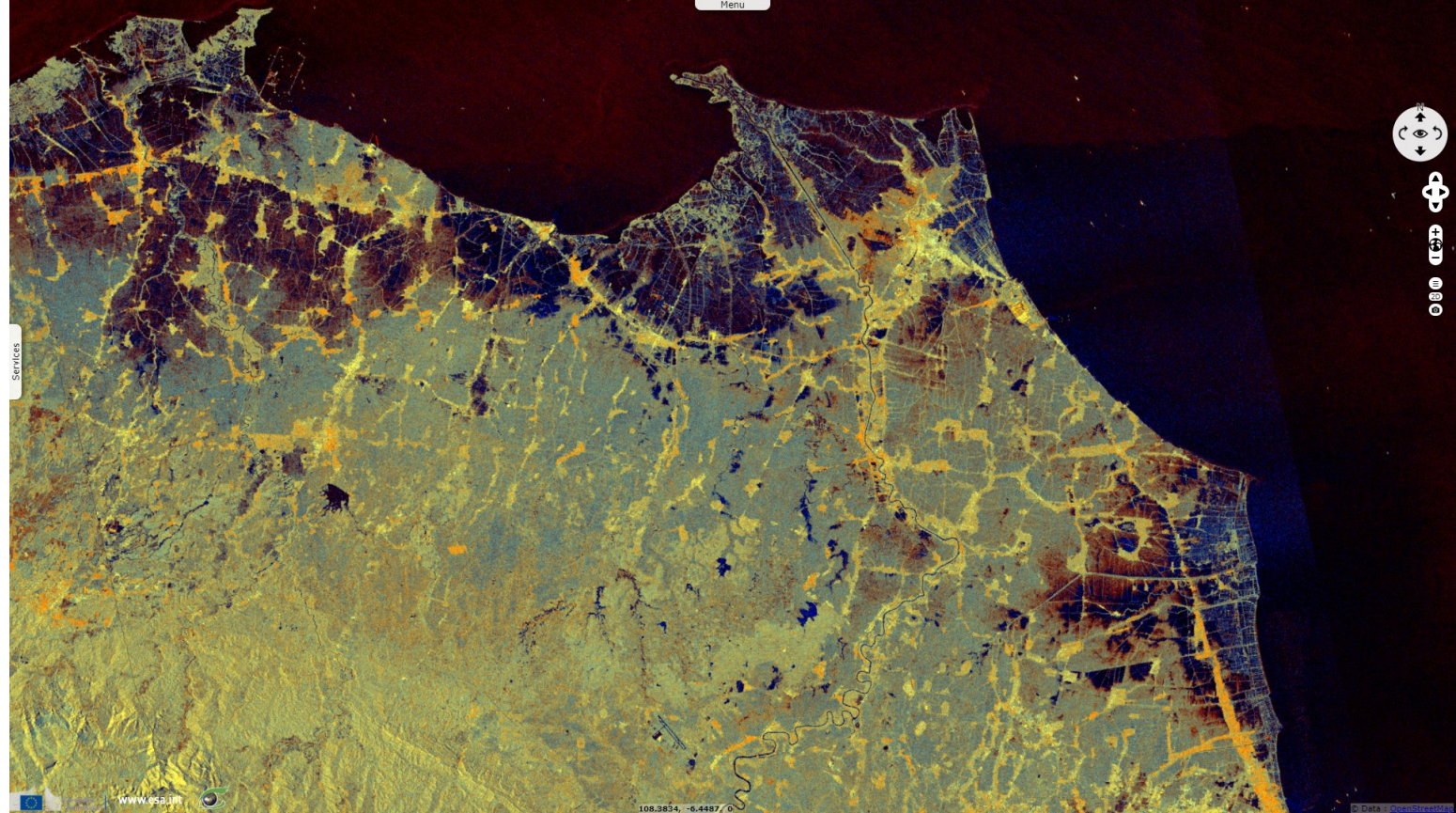
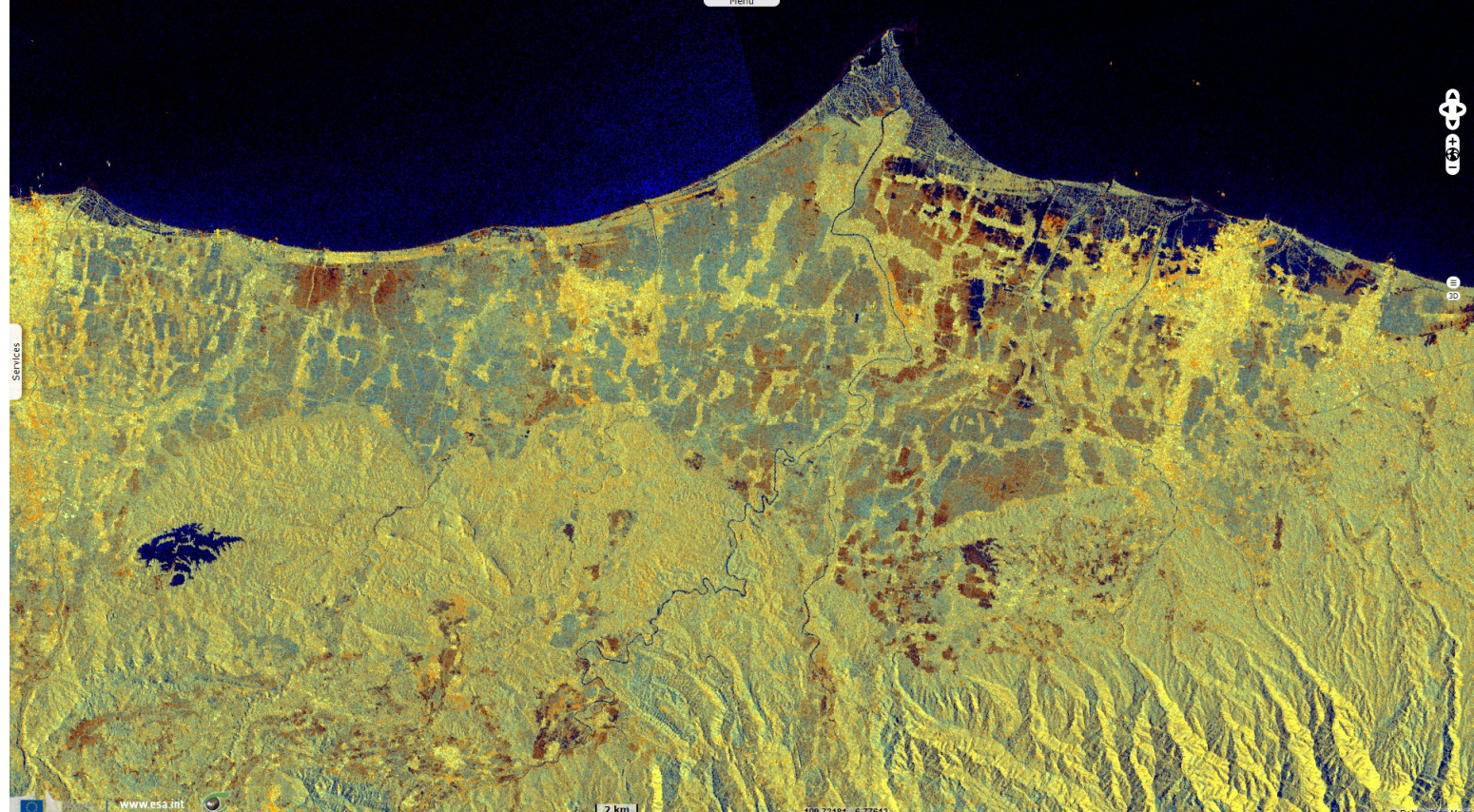














Fig. 4 - The city of Pekalongan. Similar flooding affected many of these areas in Feb. 2020 when 9 people died & 35000 were displaced. [2D animation](#)



*The views expressed herein can in no way be taken to reflect the official opinion of the European Space Agency or the European Union.
Contains modified Copernicus Sentinel data 2021, processed by VisioTerra.*

More on European Commission space:							
More on ESA:				S-1 website	S-2 website	S-3 website	
More on Copernicus program:				Scihub portal	Cophub portal	Inthub portal	Colhub portal
More on VisioTerra:				Sentinel Vision Portal	Envisat+ERS portal	Swarm+GOCE portal	CryoSat portal