

Shebelle river flood spreads from Ethiopia to Somalia

Sentinel-1 CSAR IW acquired on 14 April 2020 from 15:15:52 to 15:16:17 UTC

Sentinel-1 CSAR IW acquired on 26 April 2020 from 15:15:52 to 15:16:17 UTC

...

Sentinel-1 CSAR IW acquired on 03 May 2020 at 02:44:54 UTC

Sentinel-1 CSAR IW acquired on 09 May 2020 from 02:45:24 to 02:45:49 UTC

Author(s): Sentinel Vision team, VisioTerra, France - svp@visioterra.fr

Keyword(s): River, flooding, precipitations, Ethiopia, Somalia.



[2D Layerstack](#)

Fig. 1 - S1 (14.04.2020) - Shebelle river before the flood, Ethiopia lies at NW, Somalia at SE. Blue areas are mostly radar absorbing features. [2D view](#)

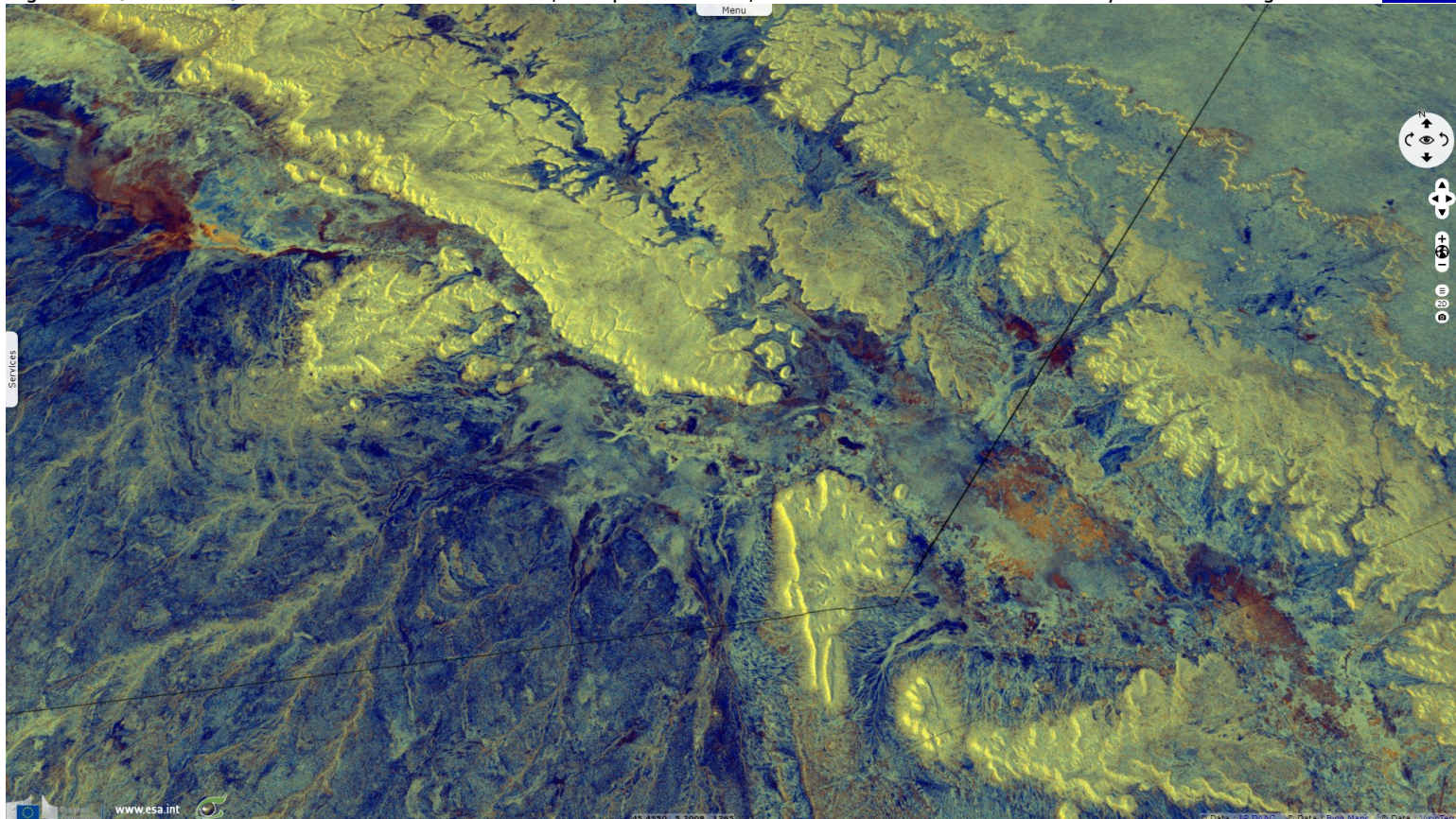


Fig. 2 - S1 (27.04.2020) - Relief x3 - Areas at north-west that turned blue show where the flood started [3D view](#)

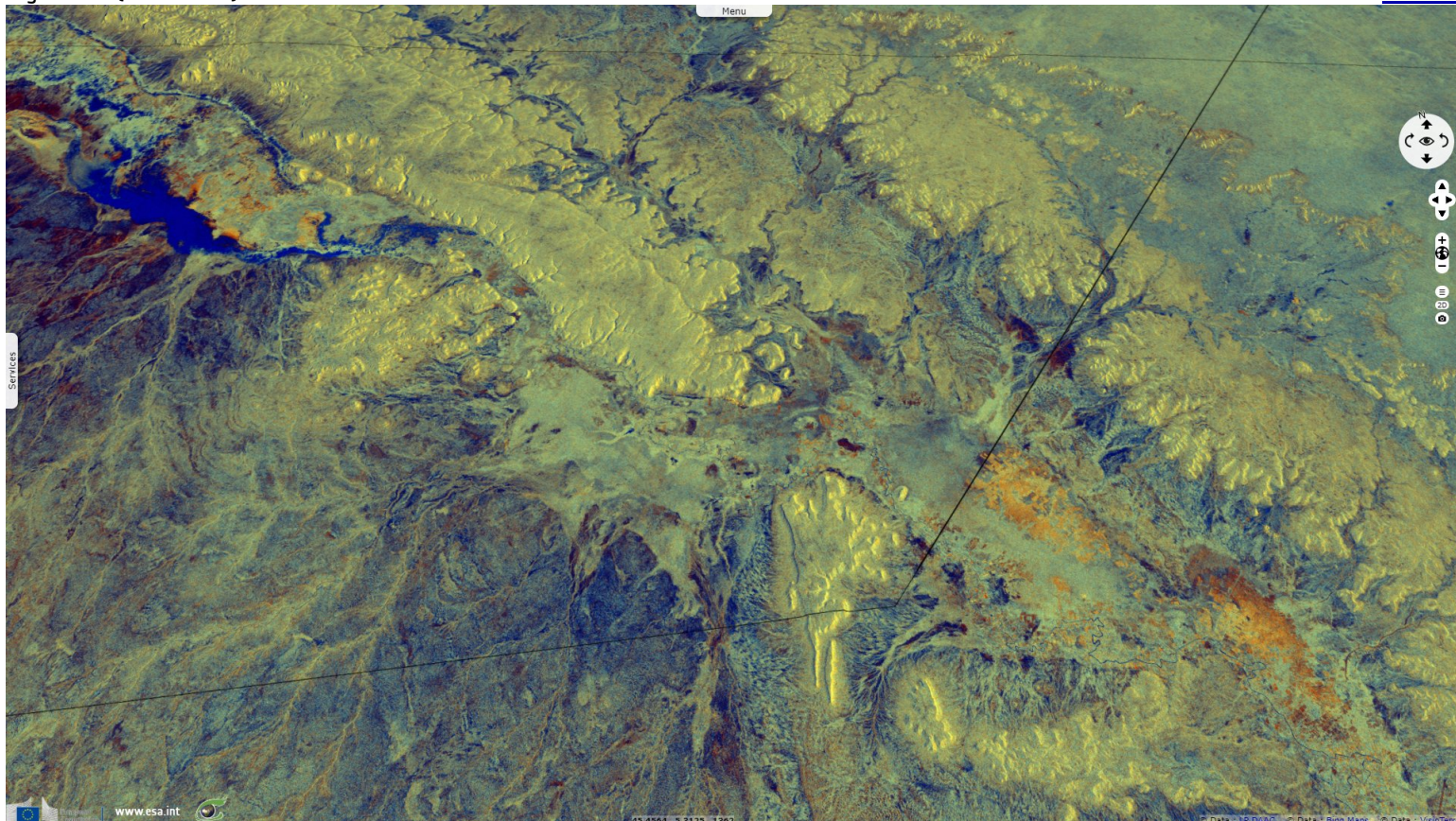


Fig. 3 - S1 (09.05.2020) - The Shebelle flood spread downstream, reaching Somalia in May.

[3D animation](#) [3D view](#)

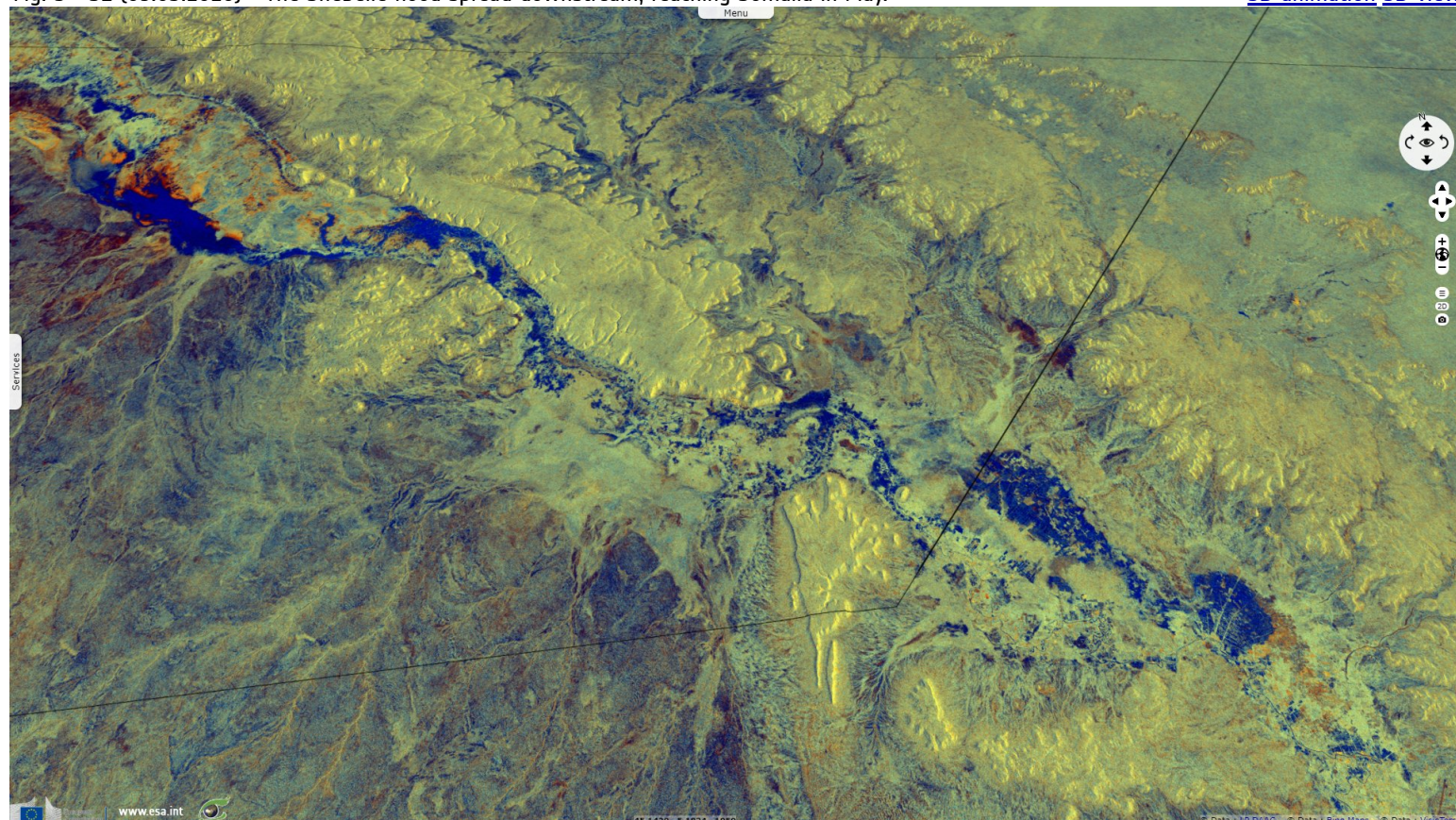
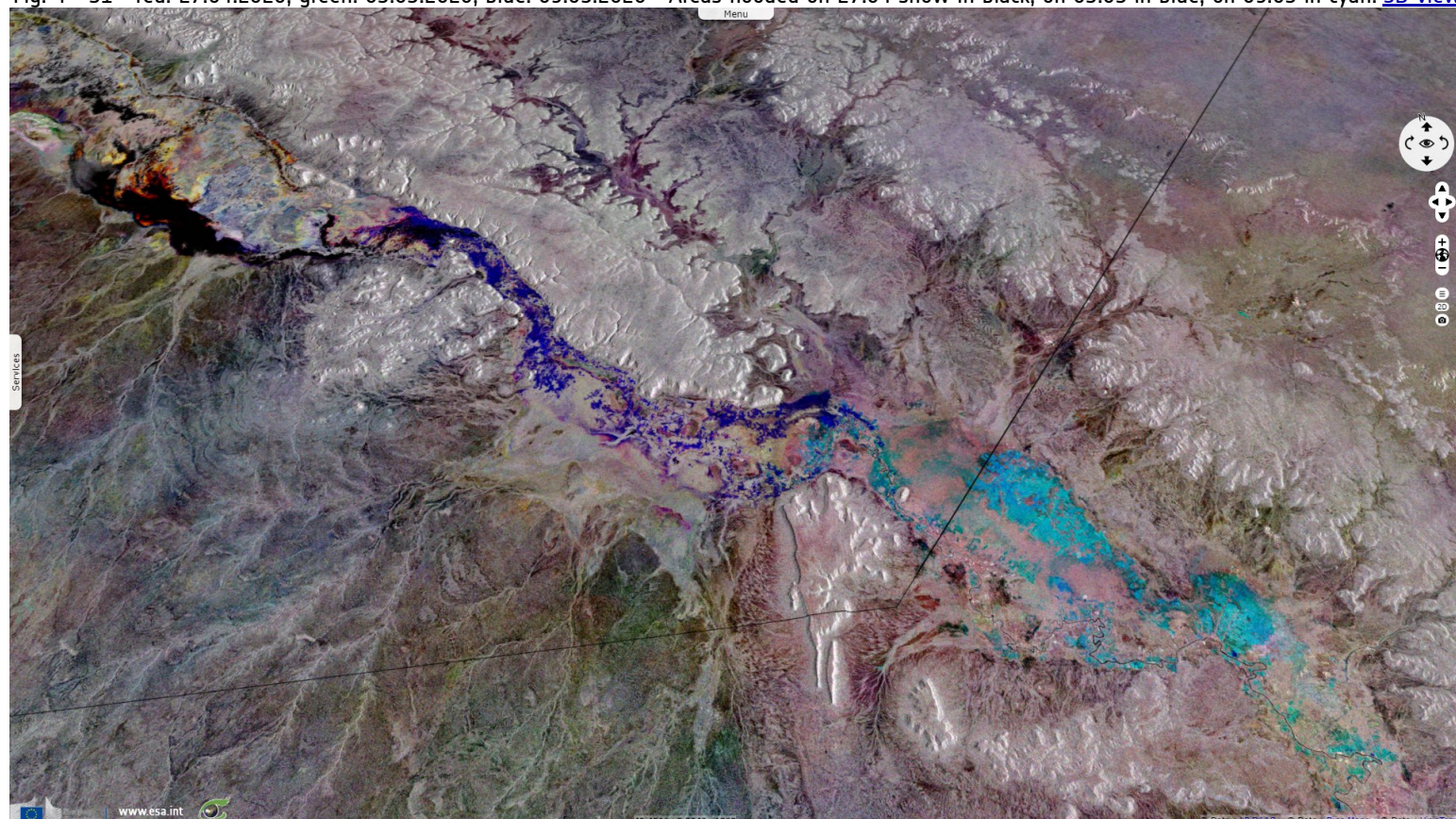


Fig. 4 - S1 - red: 27.04.2020; green: 03.05.2020; blue: 09.05.2020 - Areas flooded on 27.04 show in black; on 03.05 in blue; on 09.05 in cyan. [3D view](#)



*The views expressed herein can in no way be taken to reflect the official opinion of the European Space Agency or the European Union.
Contains modified Copernicus Sentinel data 2019, processed by VisioTerra.*

More on European Commission space:						
More on ESA:				S-1 website	S-2 website	S-3 website
More on Copernicus program:				SciHub portal	CopHub portal	InHub portal
More on VisioTerra:				Sentinel Vision Portal	Envisat+ERS portal	Swarm+GOCE portal
					CryoSat portal	