

# Mekong outlet in Gulf of Thailand

Sentinel-2 MSI acquired on 19 September 2015 at 03:34:26 UTC  
Sentinel-1 CSAR IW acquired on 22 October 2018 at 11:11:24 UTC

...  
Sentinel-2 MSI acquired on 06 May 2019 at 03:15:49 UTC  
Sentinel-1 CSAR IW acquired on 14 May 2019 at 11:11:23 UTC

Author(s): Sentinel Vision team, VisioTerra, France - [svp@visioterra.fr](mailto:svp@visioterra.fr)

Keyword(s): Coastal, climate, hydrology, monsoon, flooding, silt, alluvium, Mekong river, Cambodge, Vietnam, Gulf of Thailand



[3D Layerstack](#)

Fig. 1 - S1 (2019.04.20; 2019.05.02; 2019.05.14) - vv,vh,vv colour composite - SE part of the Gulf of Thailand, between Cambodia & Vietnam. [3D view](#)

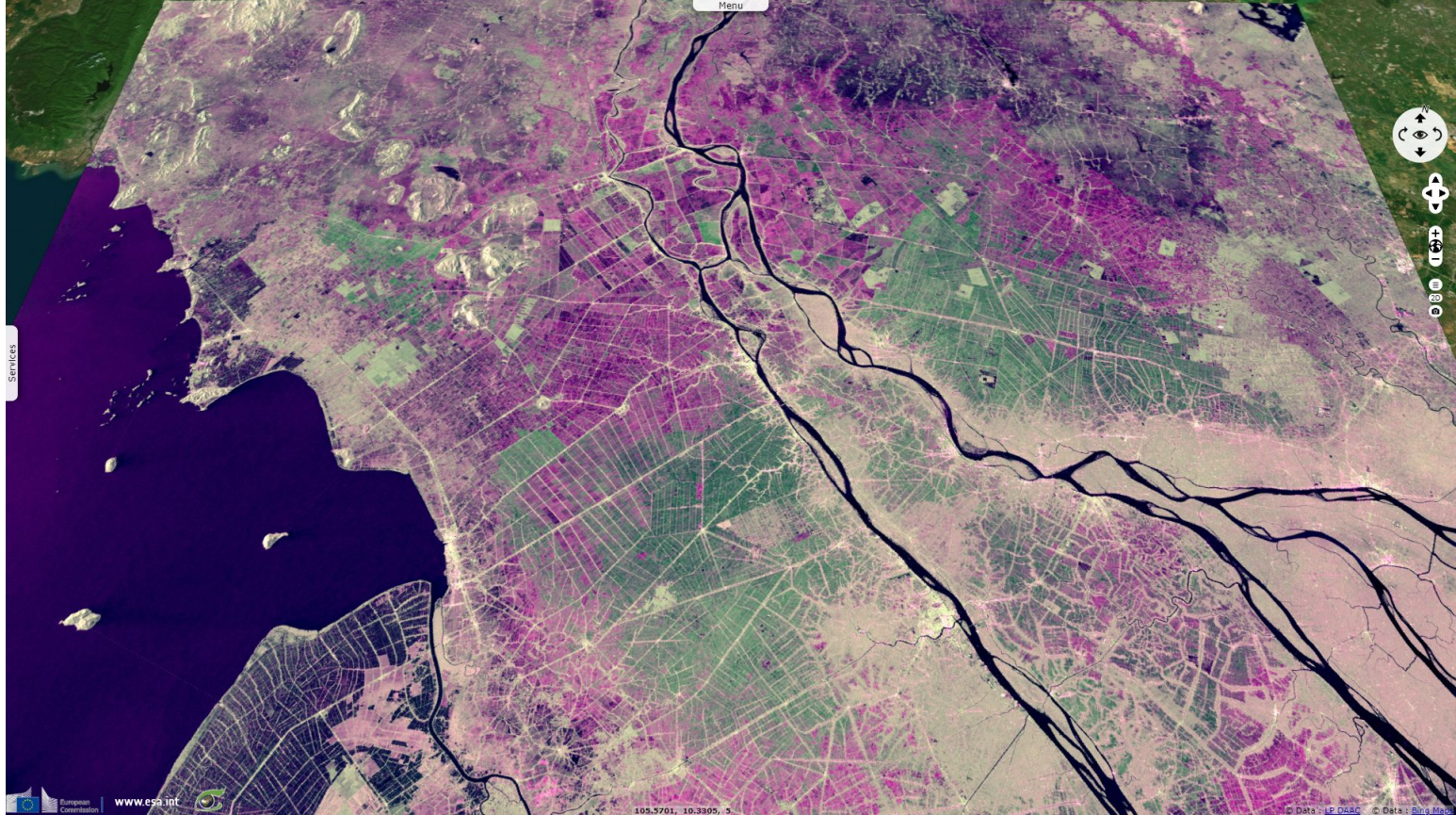


Fig. 2 - S1 (2018.10.22; 2018.11.03; 2018.11.15) - vv,vh,vv colour composite - Same area after the monsoon caused the Mekong to flood. [3D view](#)





Fig. 3 - 06.05.2019 - 11,8,2 colour composite - Zoom in on the border between Vietnam & Cambodian region of Kampot.

[3D view](#)



Fig. 4 - 19.09.2015 - 11,8,2 colour composite - The flat floodplains receive rich silt deposits when the monsoon flooding arrives.

[3D view](#)



*The views expressed herein can in no way be taken to reflect the official opinion of the European Space Agency or the European Union.  
Contains modified Copernicus Sentinel data 2019, processed by VisioTerra.*

More on European Commission space:							
More on ESA:				<a href="#">S-1 website</a>	<a href="#">S-2 website</a>	<a href="#">S-3 website</a>	
More on Copernicus program:				<a href="#">SciHub portal</a>	<a href="#">Cophub portal</a>	<a href="#">Inthub portal</a>	<a href="#">Colhub portal</a>
More on VisioTerra:				<a href="#">Sentinel Vision Portal</a>	<a href="#">Envisat+ERS portal</a>	<a href="#">Swarm+GOCE portal</a>	<a href="#">CryoSat portal</a>