

# Baarle-Nassau counter-exclaves in Netherlands

Sentinel-2 MSI acquired on 21 April 2019 at 10:50:39 UTC  
Sentinel-1 CSAR IW acquired on 08 June 2019 at 05:50:12 UTC  
Sentinel-1 CSAR IW acquired on 20 June 2019 at 05:50:13 UTC  
Sentinel-1 CSAR IW acquired on 02 July 2019 at 05:50:14 UTC

Author(s): Sentinel Vision team, VisioTerra, France - [svp@visioterra.fr](mailto:svp@visioterra.fr)

Keyword(s): Urban, frontiers, city planning, Belgium, Netherlands

[2D Layerstack](#)

Fig. 1 - S1 (mean 08.06.2019 to 02.07.2019) - vv,vh,ndi(vh,vv) colour composite - Rotterdam is at NW, Antwerp at SW, Eindhoven at east. [2D view](#)

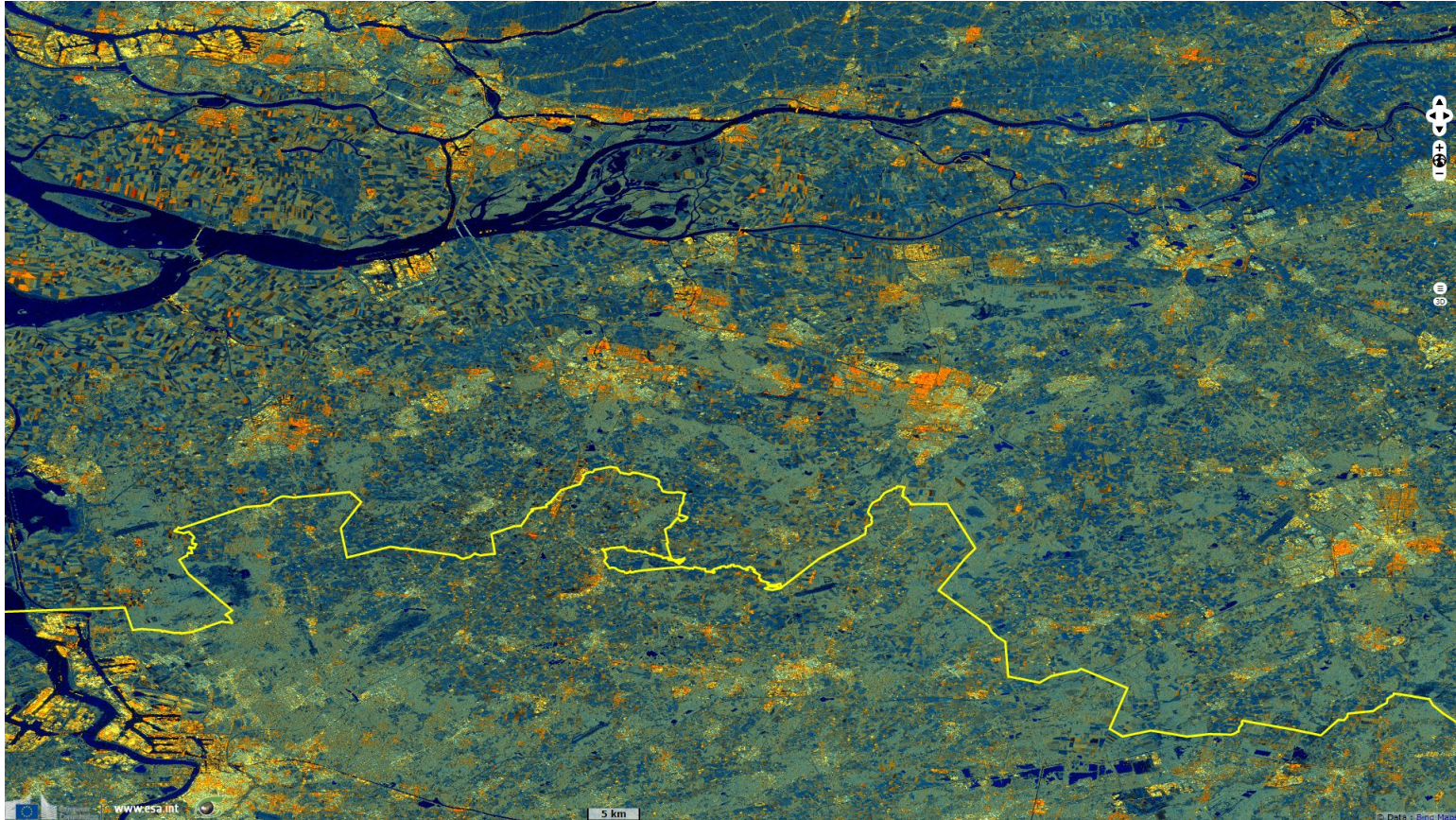
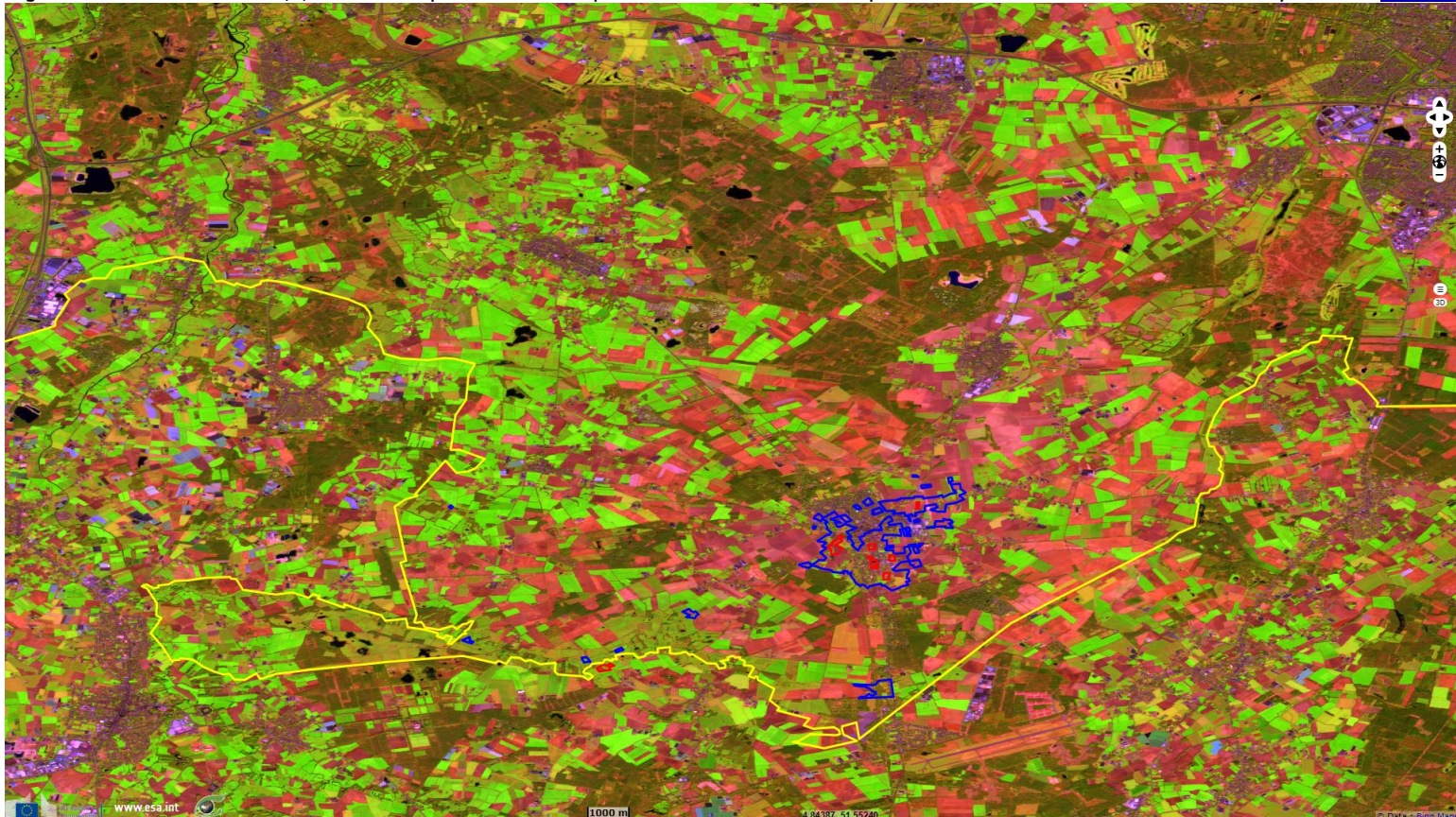


Fig. 2 - S2 (21.04.2019) - 11,8,2 colour composite - The complex border between Antwerp Province (BE) and North Brabant (NL) in yellow.. [2D view](#)



Encompassing 22 Belgian exclaves, this border is very complicated as a result of numerous medieval treaties, agreements, land-swaps and sales.



Fig. 3 - S1 (mean 08.06.2019; 20.06.2019; 02.07.2019) - vv,vh,vv colour composite - The Belgian exclaves in the NL are outlined in blue. [2D view](#)

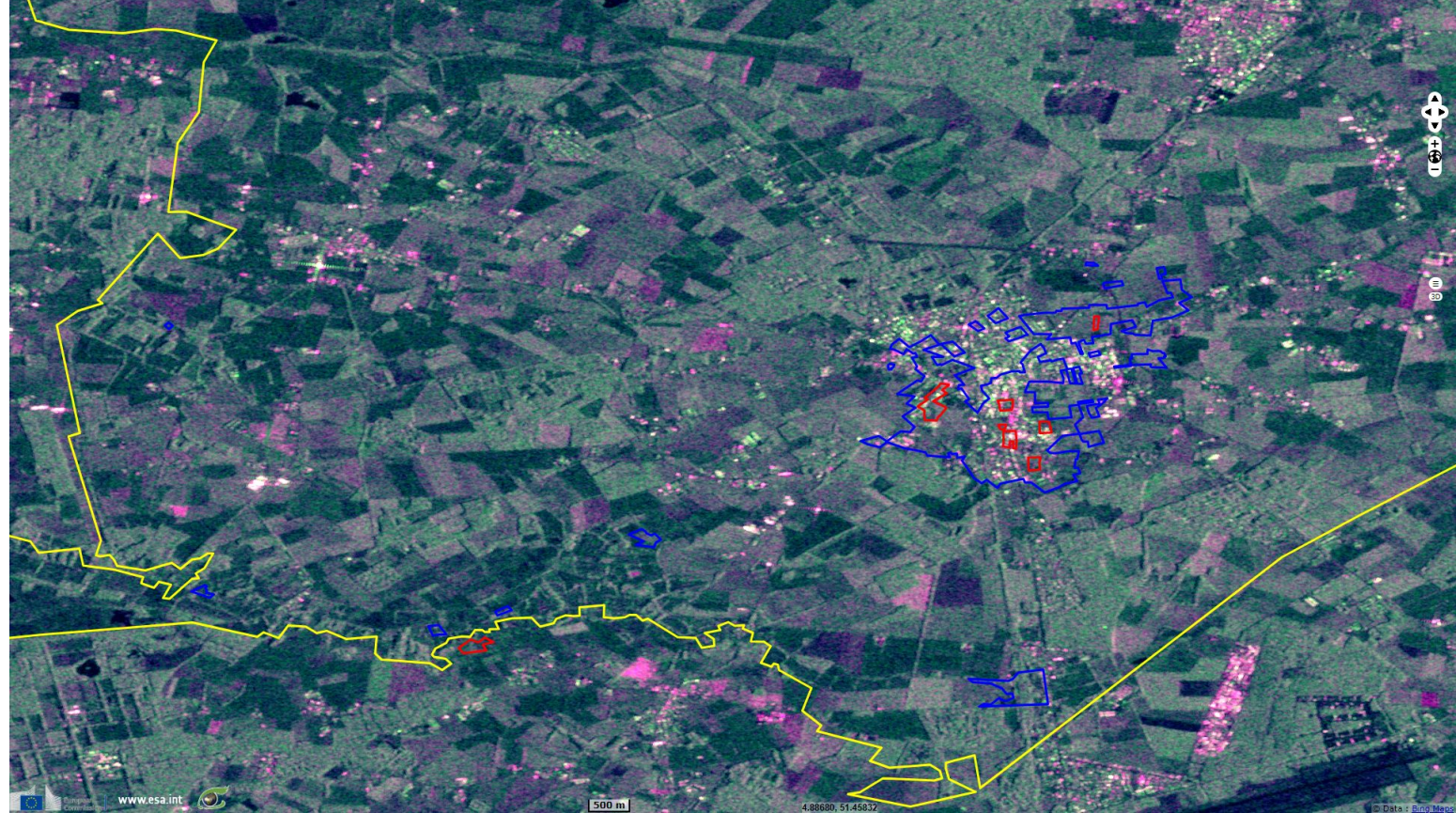


Fig. 4 - S2 (21.04.2019) - 11,8,2 natural colour - There are also six Dutch counter-exclaves (red) located within the largest Belgian exclave. [2D view](#)



*The views expressed herein can in no way be taken to reflect the official opinion of the European Space Agency or the European Union.  
Contains modified Copernicus Sentinel data 2019, processed by VisioTerra.*

More on European Commission space:						
More on ESA:				<a href="#">S-1 website</a>	<a href="#">S-2 website</a>	<a href="#">S-3 website</a>
More on Copernicus program:				<a href="#">SciHub portal</a>	<a href="#">Cophub portal</a>	<a href="#">Inthub portal</a>
More on VisioTerra:				<a href="#">Sentinel Vision Portal</a>	<a href="#">Envisat+ERS portal</a>	<a href="#">Swarm+GOCE portal</a>
					<a href="#">CryoSat portal</a>	