

# Successful flight & crashed landing at Boca Chica, USA

Sentinel-1 CSAR IW acquired on 17 May 2015 at 00:33:26 UTC  
Sentinel-2 MSI acquired on 04 December 2015 at 17:07:02 UTC  
Sentinel-2 MSI acquired on 07 December 2020 at 17:07:11 UTC  
Sentinel-1 CSAR IW acquired on 16 December 2020 at 00:33:52 UTC  
Sentinel-2 MSI acquired on 17 December 2020 at 17:07:21 UTC

Author(s): Sentinel Vision team, VisioTerra, France - [svp@visioterra.fr](mailto:svp@visioterra.fr)

Keyword(s): Launchpad, Texas, USA, United States

[3D Layerstack](#)



Fig. 1 - S1 (17.05.2015) - Boca Chica lies in the southern tip of Texas, just north of the Rio Grande river, frontier between the USA & Mexico. [2D view](#)

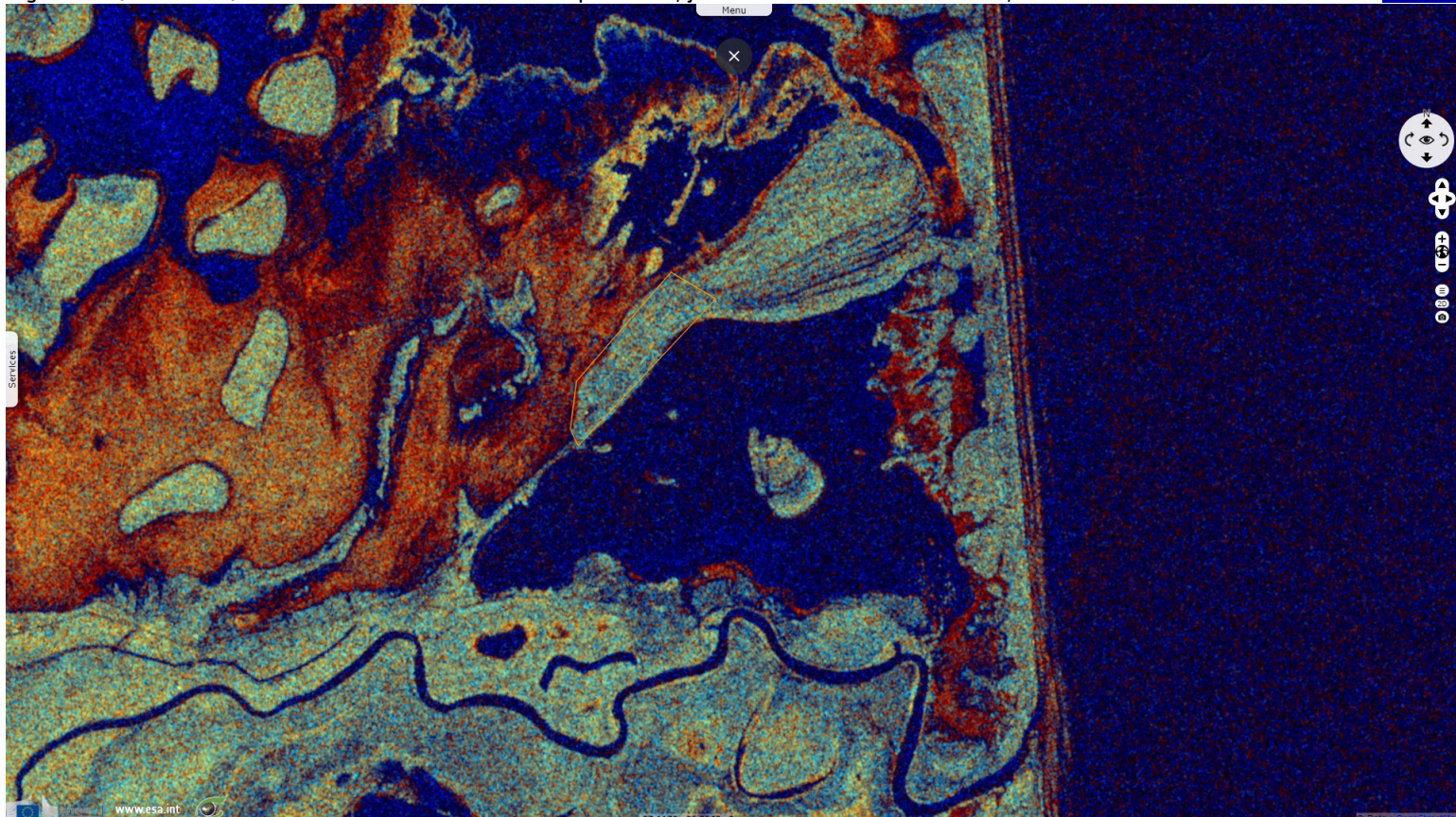


Fig. 2 - Located 1m above the sea, this village was formed in 1967 and devastated by Hurricane Beulah later that year. [2D view](#)

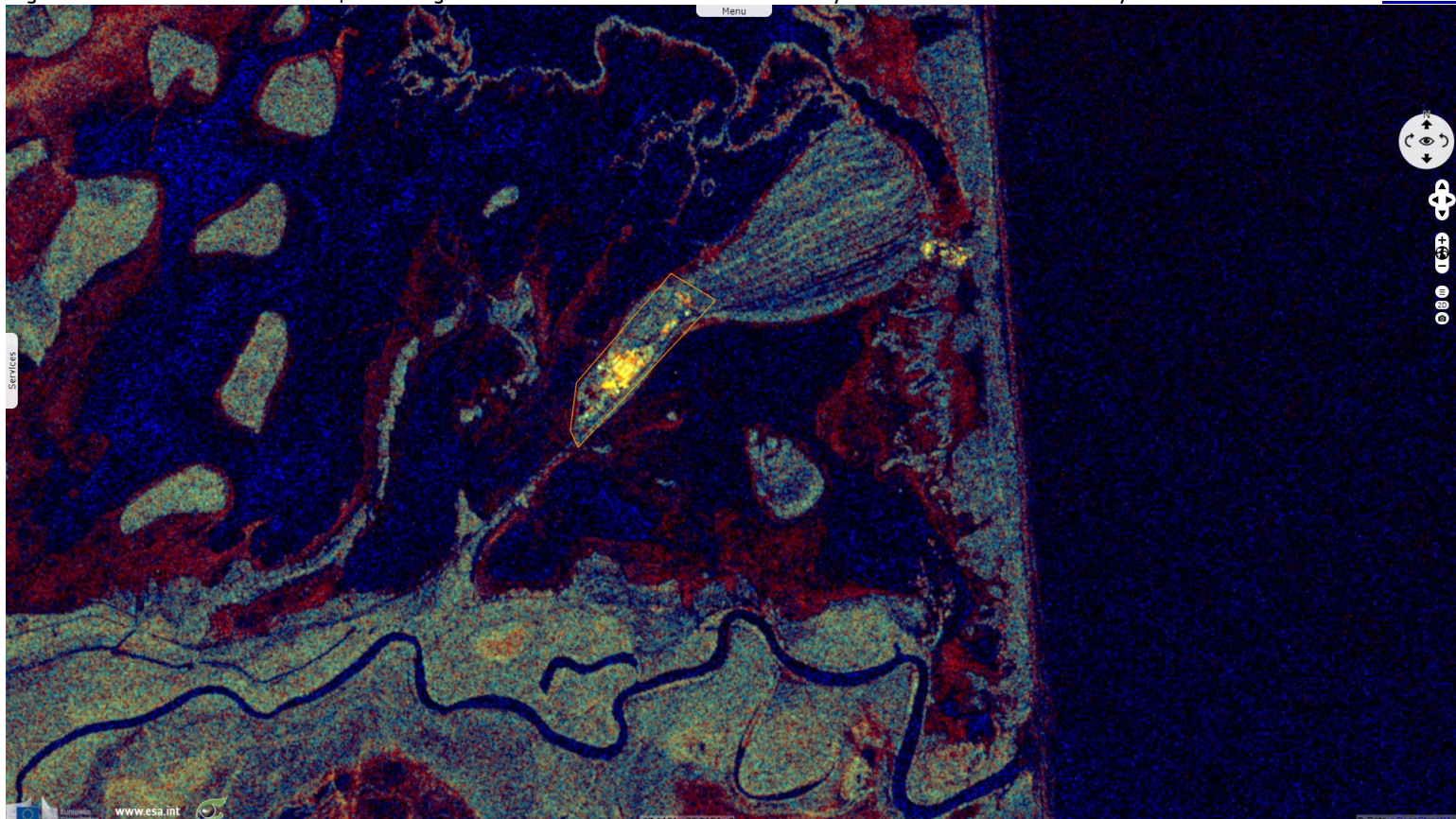




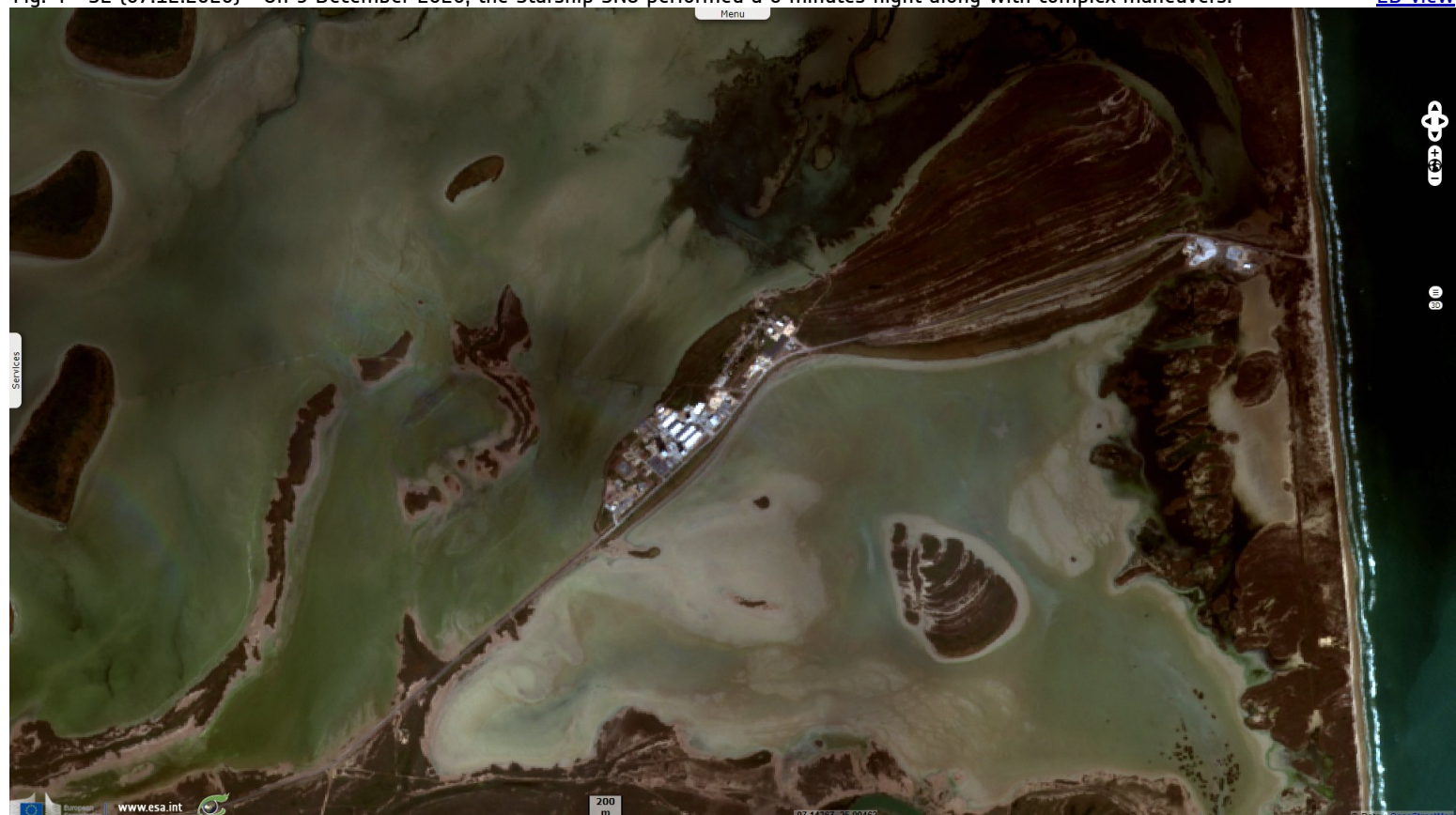
Fig. 3 - S2 (04.12.2015) - It was down to 4 inhabitants in 2017 before it became SpaceX orbital launch facility.

[2D view](#)



Fig. 4 - S2 (07.12.2020) - On 9 December 2020, the Starship SN8 performed a 6 minutes flight along with complex maneuvers.




[2D view](#)






### 2D view






 Copernicus  
Europe's eyes on Earth

Funded by the EU and ESA

SED-784-SentinelVision

powered by  VioTerra