

Wildfire rips through Gran Canaria Island national parks

Sentinel-2 MSI acquired on 09 August 2019 at 11:52:21 UTC
Sentinel-2 MSI acquired on 14 August 2019 at 11:52:29 UTC
Sentinel-2 MSI acquired on 19 August 2019 at 11:52:21 UTC
Sentinel-2 MSI acquired on 24 August 2019 at 11:52:29 UTC

Author(s): Sentinel Vision team, VisioTerra, France - svp@visioterra.fr

Keyword(s): Emergency, land, wildfire, archipelago, national park, Spain



[3D Layerstack](#)

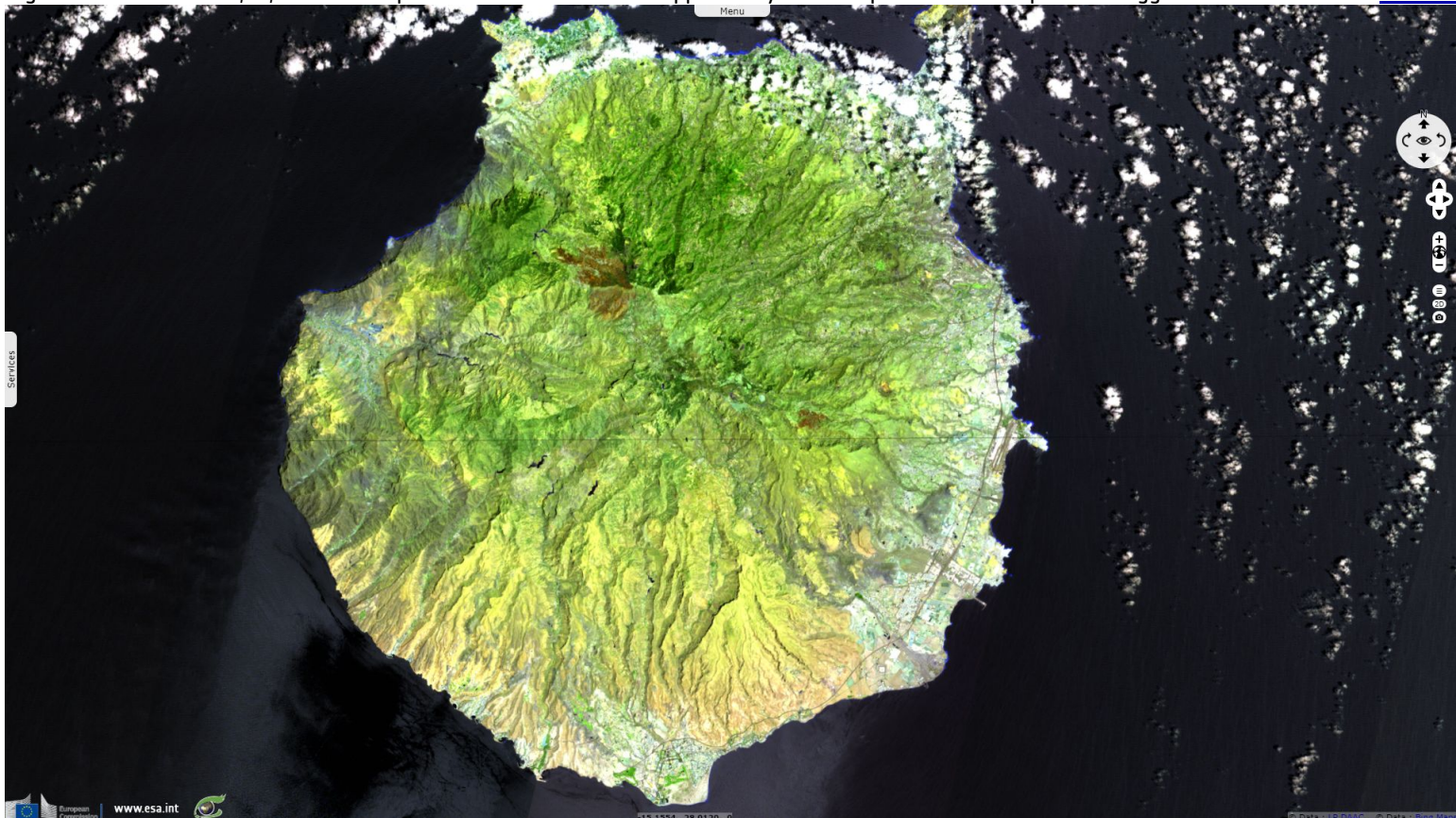
Fig. 1 - S2 (09.08.2019) - 4,3,2 - On 10.08.2019, a soldering iron tool started a large wildfire on Gran Canaria in Spain's Canaries.

[2D view](#) [3D view](#)



Fig. 2 - 14.08.2019 - 12,11,4 colour composite - Over 700 firemen supported by 11 helicopters and 5 aeroplanes struggled to contain the fire.

[3D view](#)



The fire was propelled by a combination of high temperatures, strong winds and low humidity. About 9000 people have been evacuated.

Fig. 3 - 19.08.2019 - The area is mainly mountainous and criss-crossed by ravines, making much of it inaccessible.

[3D view](#)

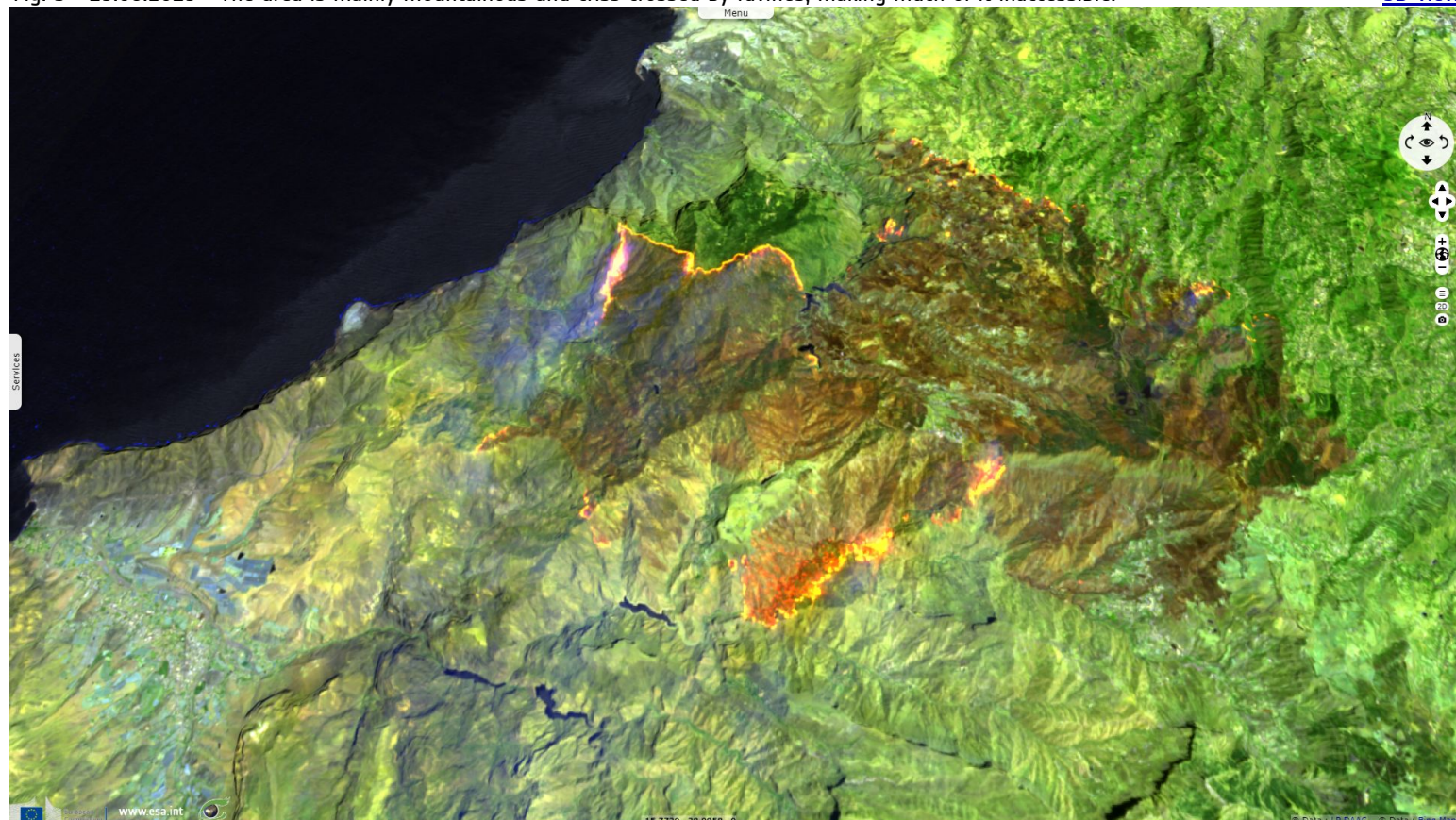
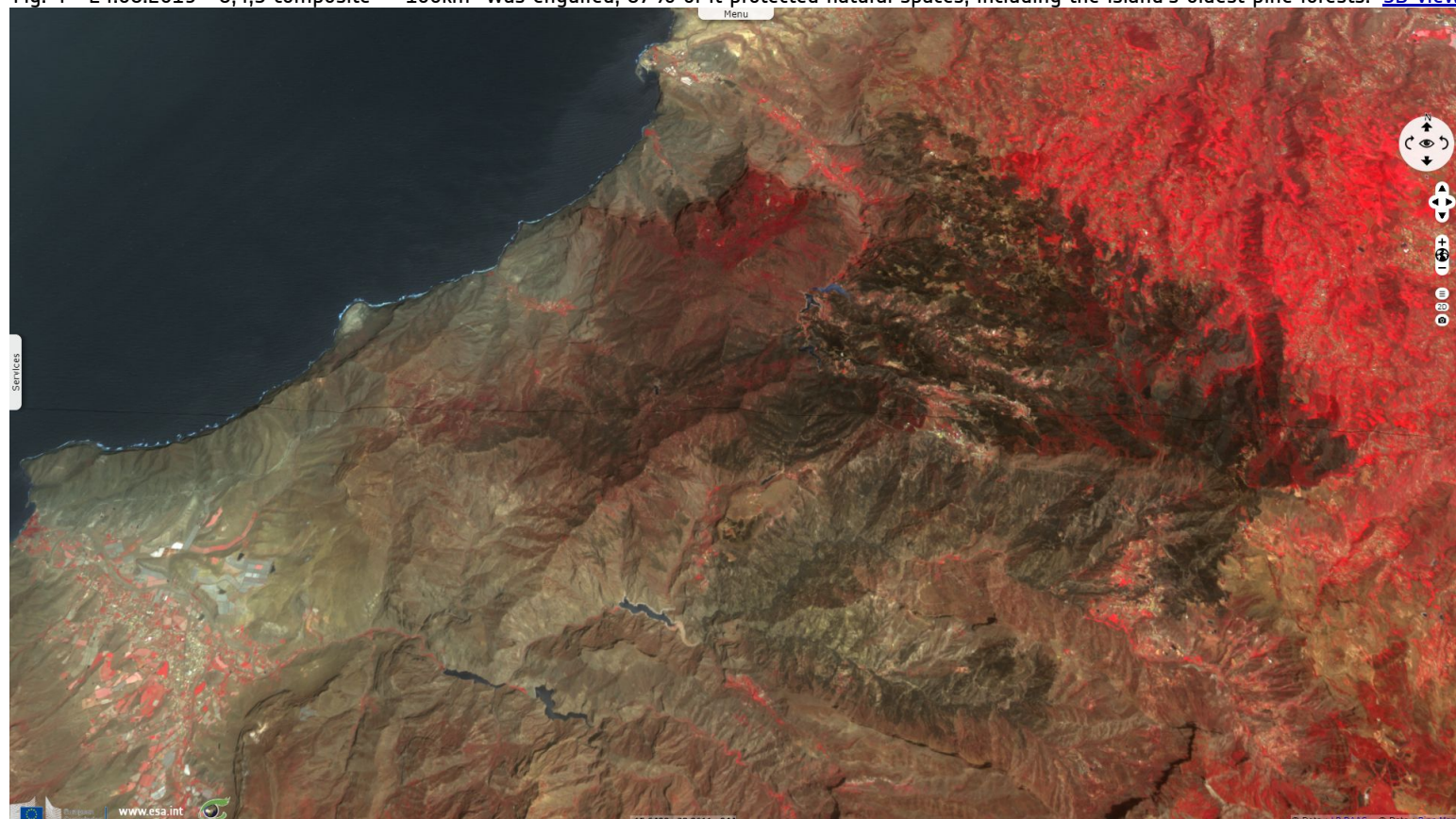









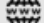




Fig. 4 - 24.08.2019 - 8,4,3 composite - ~100km² was engulfed, 87% of it protected natural spaces, including the island's oldest pine forests. [3D view](#)



*The views expressed herein can in no way be taken to reflect the official opinion of the European Space Agency or the European Union.
Contains modified Copernicus Sentinel data 2019, processed by VisioTerra.*

More on European Commission space:						
More on ESA:				S-1 website	S-2 website	S-3 website
More on Copernicus program:				SciHub portal	Cophub portal	Inthub portal
More on VisioTerra:				Sentinel Vision Portal	Envisat+ERS portal	Swarm+GOCE portal
				CryoSat portal		