

Flood flows downstream from Ethiopia to South Sudan

Sentinel-1 CSAR IW acquired on **16 July 2022** from 03:33:57 to 03:34:47 UTC
Sentinel-1 CSAR IW acquired on **02 September 2022** from 03:34:00 to 03:34:50 UTC
Sentinel-1 CSAR IW acquired on **08 October 2022** from 03:34:00 to 03:34:50 UTC
Sentinel-1 CSAR IW acquired on **01 November 2022** from 03:34:00 to 03:34:50 UTC

Author(s): Sentinel Vision team, VisioTerra, France - svp@visioterra.fr

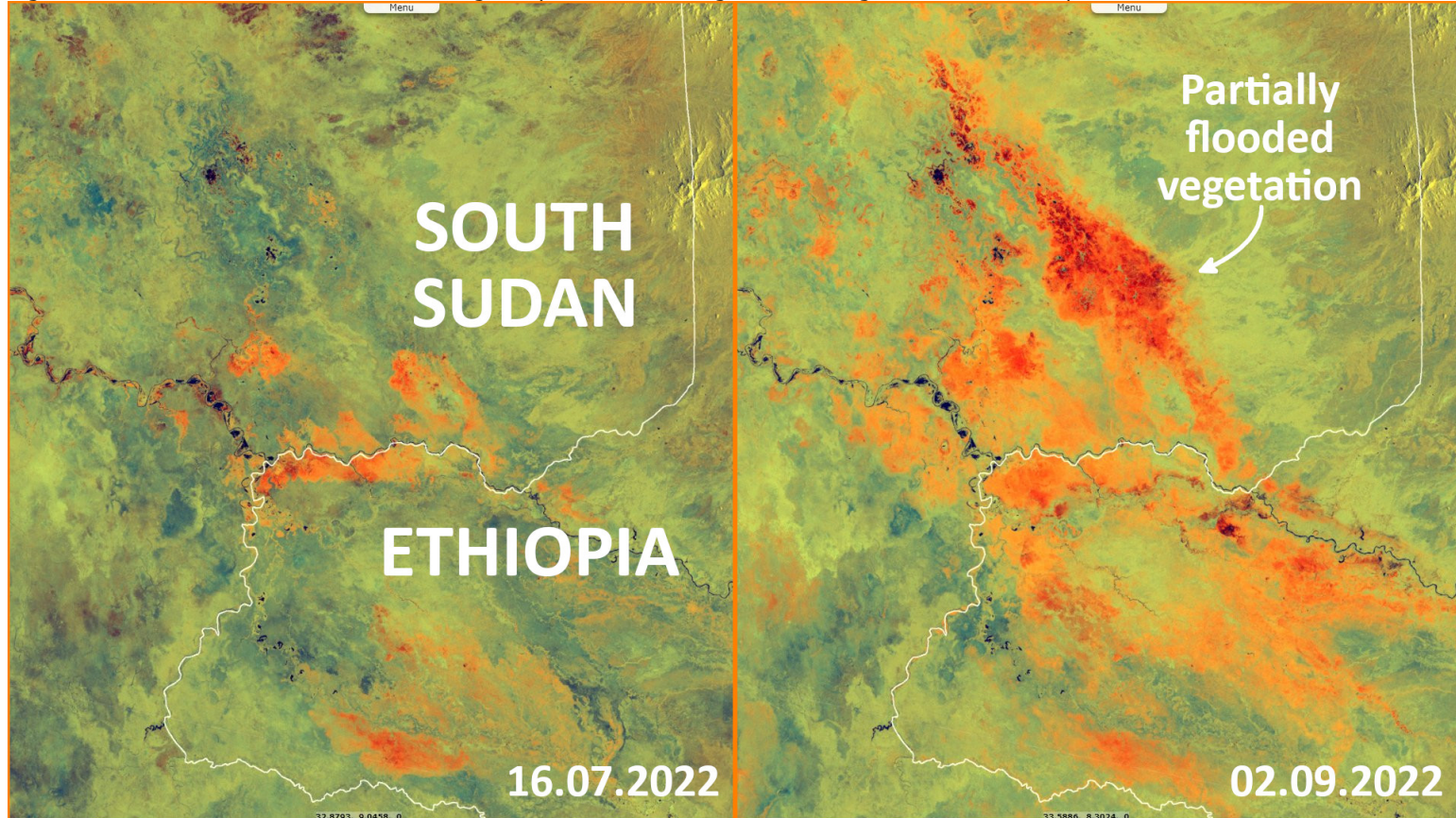
Keyword(s): Emergency, flood, hydrology, river, monsoon, rainfall, Ethiopia, South Sudan



[2D Layerstack](#)

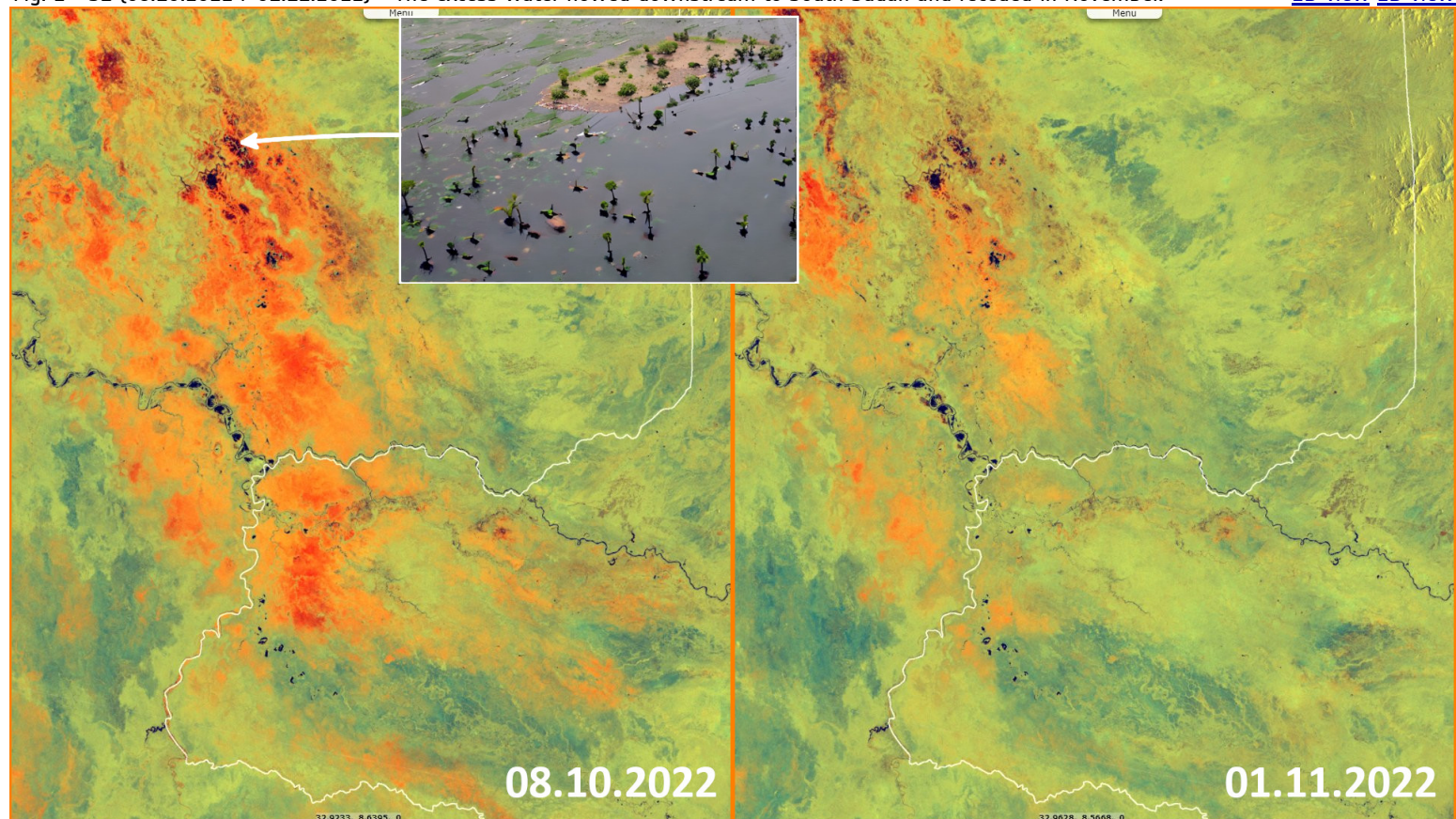
[2D view](#) [2D view](#)

Fig. 1 - S1 (16.07.2022 / 02.09.2022) - Following heavy rainfall, a flooding started in August in western Ethiopia.















Heavy rain in the Sobat river basin from early August to October caused flooding in the Gambella Region, in the floodplains at west of the Ethiopian Plateau.

Fig. 2 - S1 (08.10.2022 / 01.11.2022) - The excess water flowed downstream to South Sudan and receded in November. [2D view](#) [2D view](#)



Over 180 000 people have been displaced from their homes by floods in the Gambella Region. Meanwhile flooding in the neighbouring country of South Sudan has now affected over 1 million people. Homes, water infrastructure and health facilities have been destroyed, along with wide areas of crops and livestock.

*The views expressed herein can in no way be taken to reflect the official opinion of the European Space Agency or the European Union.
Contains modified Copernicus Sentinel data 2022, processed by VisioTerra.*

More on European Commission space:							
More on ESA:				S-1 website	S-2 website	S-3 website	
More on Copernicus program:				SciHub portal	Cophub portal	Inthub portal	Colhub portal
More on VisioTerra:				Sentinel Vision Portal	Envisat+ERS portal	Swarm+GOCE portal	CryoSat portal